

640551-7 ✓ ACTIVE

## MTA 156

TE Internal #: 640551-7

PCB Connector Covers, Cover, 7 Position, .156 in [3.96 mm]

Centerline, Polyester, Standard Product Profile, Dust Protection,

MTA 156

[View on TE.com >](#)



Connectors > PCB Connectors > PCB Connector Accessories > Protection & Strain Relief > PCB Connector Covers



Protection & Strain Relief Accessory Type: **Cover**

Number of Positions: **7**

Centerline (Pitch): **3.96 mm [.156 in]**

Primary Product Material: **Polyester**

Product Profile: **Standard**

### Features

#### Product Type Features

Protection & Strain Relief Accessory Type	Cover
Product Profile	Standard
Connector Cover Type	Dust Protection

#### Configuration Features

Number of Positions	7
---------------------	---

#### Body Features

Primary Product Color	Natural
Primary Product Material	Polyester

#### Housing Features

Centerline (Pitch)	3.96 mm [.156 in]
--------------------	-------------------

#### Usage Conditions

Compatible With IDC Installation Type Connector	Closed End
Operating Temperature Range	-55 – 105 °C[-67 – 221 °F]



**Industry Standards**

UL Flammability Rating	UL 94V-0
------------------------	----------

**Product Compliance**

[For compliance documentation, visit the product page on TE.com>](#)

EU RoHS Directive 2011/65/EU	Compliant
EU ELV Directive 2000/53/EC	Compliant
China RoHS 2 Directive MIIT Order No 32, 2016	No Restricted Materials Above Threshold
EU REACH Regulation (EC) No. 1907/2006	Current ECHA Candidate List: JUNE 2022 (224) Candidate List Declared Against: JAN 2022 (223) SVHC > Threshold: Not Yet Reviewed
Halogen Content	Not Low Halogen - contains Br or Cl > 900 ppm.
Solder Process Capability	Not applicable for solder process capability

Product Compliance Disclaimer

This information is provided based on reasonable inquiry of our suppliers and represents our current actual knowledge based on the information they provided. This information is subject to change. The part numbers that TE has identified as EU RoHS compliant have a maximum concentration of 0.1% by weight in homogenous materials for lead, hexavalent chromium, mercury, PBB, PBDE, DBP, BBP, DEHP, DIBP, and 0.01% for cadmium, or qualify for an exemption to these limits as defined in the Annexes of Directive 2011/65/EU (RoHS2). Finished electrical and electronic equipment products will be CE marked as required by Directive 2011/65/EU. Components may not be CE marked. Additionally, the part numbers that TE has identified as EU ELV compliant have a maximum concentration of 0.1% by weight in homogenous materials for lead, hexavalent chromium, and mercury, and 0.01% for cadmium, or qualify for an exemption to these limits as defined in the Annexes of Directive 2000/53/EC (ELV). Regarding the REACH Regulation, the information TE provides on SVHC in articles for this part number is based on the latest European Chemicals Agency (ECHA) 'Guidance on requirements for substances in articles' posted at this URL: <https://echa.europa.eu/guidance-documents/guidance-on-reach>

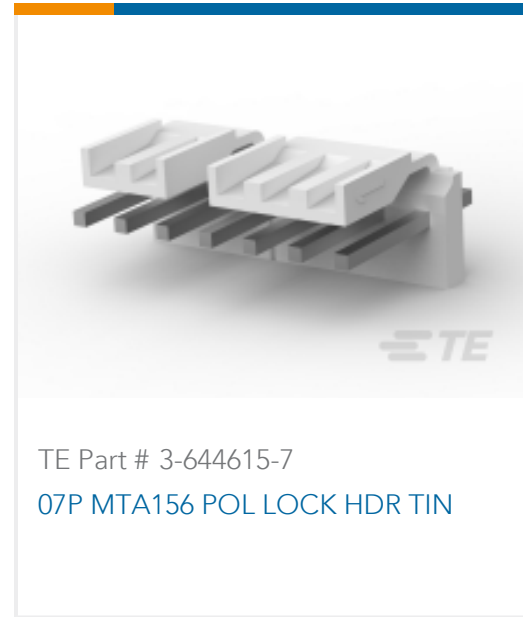
**Compatible Parts**

TE Part # CAT-103156-WBHSM  
3.96mm Wire-to-board housing: receptacle, with mating alignment, SL 156

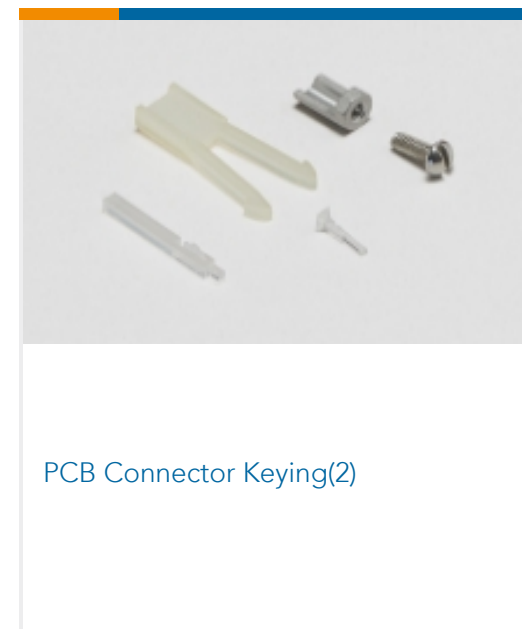
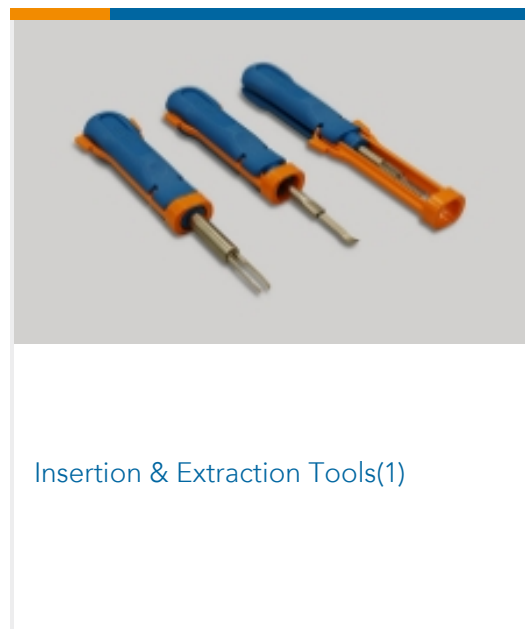
TE Part # 640251-7  
07P SL156 HSG W/O LCK RAMP

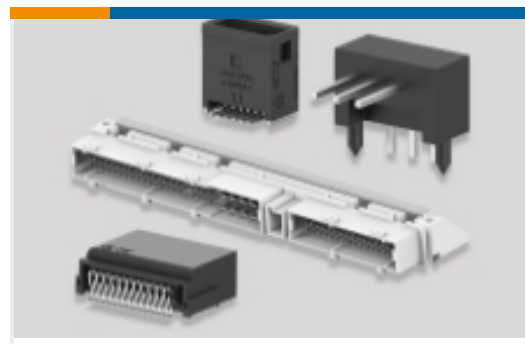
TE Part # 3-640429-7  
07P MTA156 CONN ASSY 24AWG WHT

TE Part # 640383-7  
07P MTA156 HDR ASSY STR SQ SN

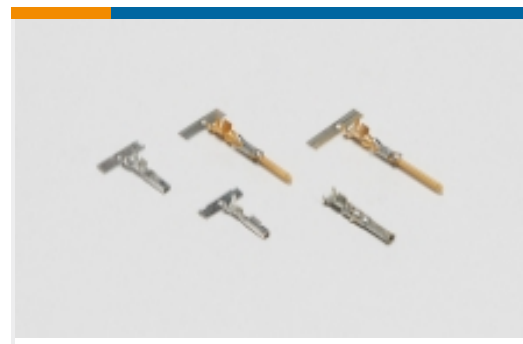


Also in the Series | **MTA 156**





PCB Headers & Receptacles(729)



Power Contacts(3)



Rectangular Caps & Covers(1)



Rectangular Power Connectors(749)



Standard Rectangular Connectors (1309)

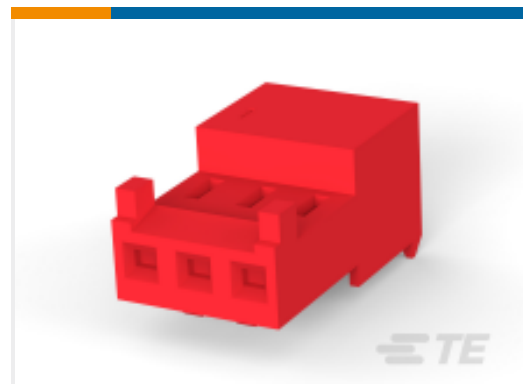


Wire-to-Board Connector Contacts(12)

## Customers Also Bought



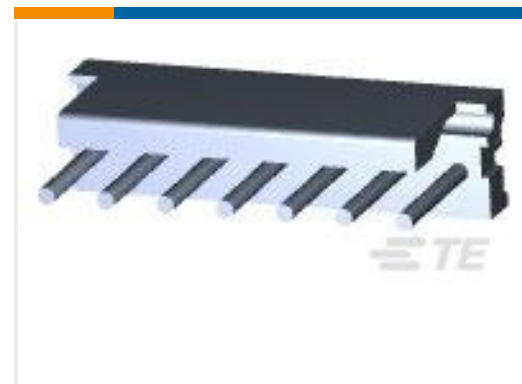
TE Part #1-640550-6  
Polyester PCB Connector Covers: 2.54 mm, MTA 100



TE Part #4-643813-6  
Nylon Tin Plated Receptacle: 2.54mm, With Mating Alignment, MTA 100



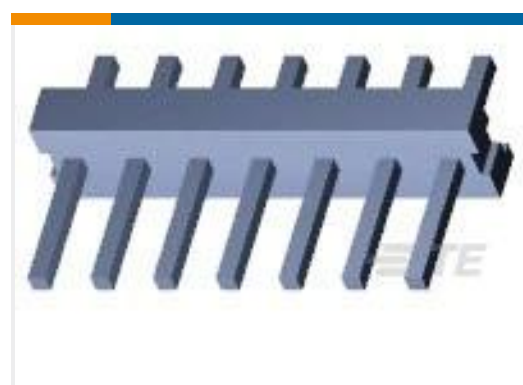
TE Part #3-643819-7  
07P MTA156 CONN ASSY 22AWG RED



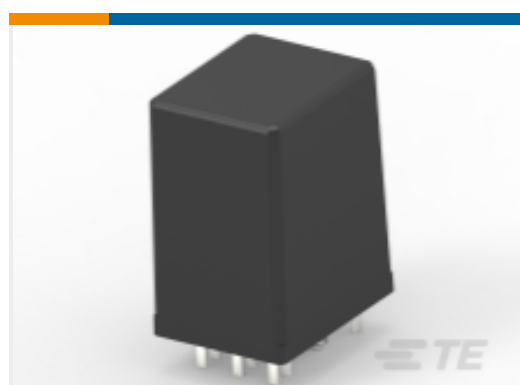
TE Part #640388-7  
07P MTA156 HDR ASSY RN STR F/L



TE Part #1-643464-4  
07P MTA156 HD ASY ST W/O#1,4,6



TE Part #641991-2  
07P MTA156 HDR ASSY SQ W/O#5



TE Part #1-2027011-0  
R10-E2W4-S1.8K=RELAY,7.5A,4C, AGCDO,24VDC

## Documents

**Product Drawings**  
07P MTA156 COVER

English

**CAD Files**

3D PDF

3D

Customer View Model

ENG\_CVM\_CVM\_640551-7\_G.2d\_dxf.zip



English

Customer View Model

[ENG\\_CVM\\_CVM\\_640551-7\\_G.3d\\_igs.zip](#)

English

Customer View Model

[ENG\\_CVM\\_CVM\\_640551-7\\_G.3d\\_stp.zip](#)

English

Customer View Model

[ENG\\_CVM\\_640551-7\\_L.3d\\_igs.zip](#)

English

Customer View Model

[ENG\\_CVM\\_640551-7\\_L.3d\\_stp.zip](#)

English

Customer View Model

[ENG\\_CVM\\_640551-7\\_L.2d\\_dxf.zip](#)

English

[3D PDF](#)

English

By downloading the CAD file I accept and agree to the [Terms and Conditions](#) of use.

---

### Datasheets & Catalog Pages

[MTA, CST-100 II, SL-156 and AMP Economy Power \(EP\) Connectors](#)

English

---

### Product Specifications

[Application Specification](#)

Japanese

[Application Specification](#)

English

[MTA 156 Ribbon Cable Connector Assemblies \(English And Spanish\)](#)

English

[MTA 156 Ribbon Cable Connector Assemblies \(English And Spanish\)](#)

Japanese