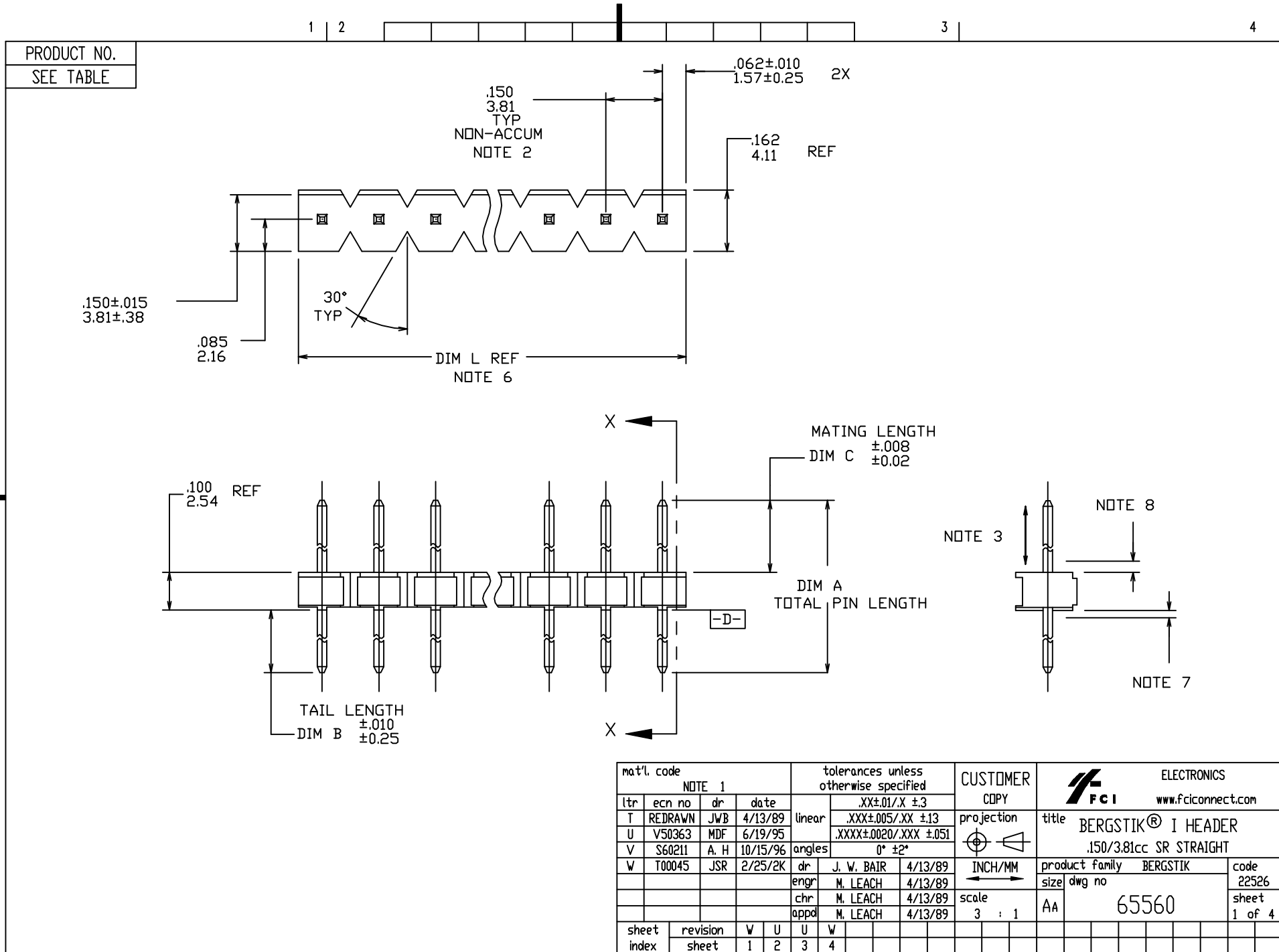


Tous droits strictement reserves. Reproduction ou communication a des tiers interdite sous quelque forme que ce soit sans autorisation ecrite du proprietaire. Propriete de FCI ELECTRONICS. Droits de reproduction FCI ELECTRONICS INC.

All rights strictly reserved. Reproduction or issue to third parties in any form whatever is not permitted without written authority from the proprietor. Property of FCI ELECTRONICS Copyright FCI ELECTRONICS INC.



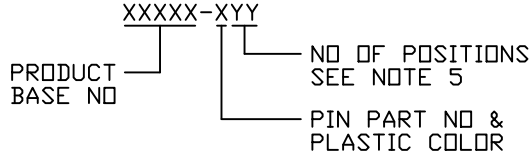
mat'l. code				tolerances unless otherwise specified				CUSTOMER		ELECTRONICS			
NOTE 1								COPY		www.fciconnect.com			
ltr	ecm no	dr	date	linear	.XX±.01/X ±3			projection	title BERGSTIK® I HEADER .150/3.81cc SR STRAIGHT				
T	REDRAWN	JWB	4/13/89		.XXX±.005/XX ±13								
U	V50363	MDF	6/19/95		.XXX±.0020/XXX ±.051			INCH/MM	product family BERGSTIK		code		
V	S60211	A. H	10/15/96	angles	0° ±2*						size	dwg no	
W	T00045	JSR	2/25/2K	dr	J. W. BAIR	4/13/89		scale 3 : 1	AA		65560		sheet
				engr	M. LEACH	4/13/89							1 of 4
				chr	M. LEACH	4/13/89							
				appd	M. LEACH	4/13/89							
sheet index	revision sheet	W	U	U	W								
		1	2	3	4								

Tous droits strictement réservés. Reproduction ou communication a des tiers interdite sous quelque forme que ce soit sans autorisation écrite du propriétaire.  
 Propriété de © FCI ELECTRONICS. Droits de reproduction FCI ELECTRONICS INC.

All rights strictly reserved. Reproduction or issue to third parties in any form whatever is not permitted without written authority from the proprietor.  
 Property of © FCI ELECTRONICS Copyright FCI ELECTRONICS INC.

PRODUCT NO. SEE TABLE	PLATING VARIATIONS		PLASTIC COLOR
	DASH NO.	OVERPLATING	
XXXXX-1YY	30u"/.76u Au	50u"/1.27u Ni	BLACK
-2YY	15u"/.38u Au	50u"/1.27u Ni	CREAM
-3YY	50u"/1.27u Au	50u"/1.27u Ni	NATURAL BROWN
-4YY	150u"/3.81u 93/7 TIN LEAD	—————	BLACK
-5YY	15u"/.38u Pd ALLOY WITH Au FLASH	50u"/1.27u Ni	DARK BLUE
XXXXX-6YY	30u"/.76u Pd ALLOY WITH Au FLASH	50u"/1.27u Ni	LIGHT BLUE



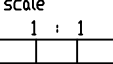
**PART NUMBER INFORMATION**



EXAMPLE: 65566-408 DENOTES AN 8 POSITION PART WITH .00381/.000150 TIN PLATED PINS. THE OVERALL PLASTIC LENGTH IS 1.174/29.82. THE PLASTIC COLOR IS BLACK.

**NOTES:**


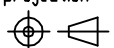
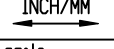
- ① PLASTIC MATERIAL: 20% MIN GLASS FILLED NYLON. RATED PER UL 94V-0. PIN MATERIAL: 3/4 HARD PHOS. BRONZE.
- ② MEASURED AT DATUM -D- WITH PART IN RESTRAINED CONDITION.
- ③ 5 LBS. / 2.3 KG MINIMUM PIN PUSH-OUT FORCE IN EITHER DIRECTION.
- ④ SEE TABLE FOR AVAILABLE DASH NO'S (AVAILABILITY DENOTED BY ASTERISK).
- ⑤ MIN NO. OF POSITIONS - 1 , MAX NO. OF POSITIONS - 31.
- ⑥ DIM L - (NUMBER OF POSITIONS X .150/3.81) - .026/0.66.
- ⑦ .020/.51 MAX FLASH AROUND PINS IN THIS AREA.
- ⑧ .030/.76 MAX FLASH AROUND PINS IN THIS AREA.
- ⑨ TWO SIDES OF LEAD-IN ON PINS NOT PLATED. TYPICAL BOTH ENDS.

mat'l. code		tolerances unless otherwise specified		CUSTOMER COPY		 ELECTRONICS www.fciconnect.com	
ltr	ecn no	dr	date	linear	.XX±.01/X ±.3	projection	
U					.XXX±.005/XX ±.13		
				angles	.XXX±.0020/XXX ±.051	INCH/MM 	product family BERGSTIK size dwg no
				dr	0° ±2*		
				engr	J. W. BAIR 4/26/89	AA 65560	
				chr	M. LEACH 4/26/89		
				appd	M. LEACH 4/26/89		
sheet index	revision sheet						

Tous droits strictement reserves. Reproduction ou communication a des tiers interdite sous quelque forme que ce soit sans autorisation écrite du propriétaire.  
Propriete de © FCI ELECTRONICS. Droits de reproduction FCI ELECTRONICS INC.

All rights strictly reserved. Reproduction or issue to third parties in any form whatever is not permitted without written authority from the proprietor.  
Property of © FCI ELECTRONICS Copyright FCI ELECTRONICS INC.

PRODUCT NO. SEE TABLE	TOTAL PIN LENGTH DIM A	TAIL LENGTH DIM B	MATING LENGTH DIM C	DASH NUMBERS AVAILABLE					
				-1XX	-2XX	-3XX	-4XX	-5XX	-6XX
65560-XY	.825/20.99	.495/12.57	.230/5.84	*	*	*	*		
65561-XY	.615/15.62	.285/7.24	.230/5.84	*	*	*	*		
65562-XY	.730/18.54	.400/10.16	.230/5.84	*	*	*	*		*
65563-XY	.965/24.51	.635/16.13	.230/5.84	*	*	*	*		
65564-XY	1.025/26.04	.695/17.65	.230/5.84	*	*	*	*		
65565-XY	.525/13.34	.195/4.95	.230/5.84	*	*	*	*		
65566-XY	.450/11.43	.120/3.05	.230/5.84	*	*	*	*		*
65567-XY	.480/12.19	.150/3.81	.230/5.84	*	*	*	*		
65568-XY	.425/10.80	.095/2.41	.230/5.84	*	*	*	*		
65569-XY	.580/14.73	.250/6.35	.230/5.84	*	*	*	*		
65570-XY	NOT AVAILABLE								
65571-XY	1.095/27.81	.765/19.43	.230/5.84	*	*	*	*		
65572-XY	.925/23.50	.595/15.11	.230/5.84	*	*	*	*		
65573-XY	1.155/29.34	.825/20.96	.230/5.84	*	*	*	*		
65574-XY	.880/22.35	.550/13.97	.230/5.84	*	*	*	*		
65575-XY	.615/15.65	.185/4.70	.330/8.38	*	*	*	*		
65576-XY	.555/14.10	.125/3.18	.330/8.38	*	*	*	*		
65607-XY	.895/22.73	.245/6.22	.550/13.97	*	*	*	*		
65608-XY	1.195/30.35	.545/13.84	.550/13.97	*	*	*	*		
66472-XY	NOT AVAILABLE								
66561-XY	.815/20.70	.120/3.05	.595/15.11	*	*	*	*		
67097-XY	.436/11.07	.216/5.49	.120/3.05	*	*	*	*		
67159-XY	.634/16.10	.216/5.49	.318/8.08	*	*	*	*		
67161-XY	NOT AVAILABLE								
67282-XY	NOT AVAILABLE								

mat'l. code				tolerances unless otherwise specified				CUSTOMER COPY		 <b>ELECTRONICS</b> www.fciconnect.com	
ltr	ecn no	dr	date	linear	.XX±.01/X ±.3		projection		title		
U					.XXX±.005/XX ±.13				BERGSTIK® I HEADER		
					.XXX±.0020/.XXX ±.051				.150/3.81cc SR STRAIGHT		
					angles	0° ±2°			product family BERGSTIK		
				dr	J. W. BAIR	4/26/89	INCH/MM		size		code
				engr	M. LEACH	4/26/89	A		dwg no		22526
				chr	M. LEACH	4/26/89			65560		sheet
				appd	M. LEACH	4/26/89	scale	1 : 1			
sheet index	revision sheet										

Tous droits strictement reserves. Reproduction ou communication a des tiers interdite sous quelque forme que ce soit sans autorisation écrite du propriétaire.  
 Propriete de © FCI ELECTRONICS. Droits de reproduction FCI ELECTRONICS INC.

All rights strictly reserved. Reproduction or issue to third parties in any form whatever is not permitted without written authority from the proprietor.  
 Property of © FCI ELECTRONICS Copyright FCI ELECTRONICS INC.



PRODUCT NO. SEE TABLE	TOTAL PIN LENGTH DIM A	TAIL LENGTH DIM B	MATING LENGTH DIM C	DASH NUMBERS AVAILABLE					
				-1XX	-2XX	-3XX	-4XX	-5XX	-6XX
67468-XXX	NOT AVAILABLE								
68793-XXX	1.028/26.11	.318/8.08	.610/15.49	*					
86882-XXX	.630/16.00	.110/2.79	.420/10.67			*			
86883-XXX	1.335/33.91	.585/14.86	.650/16.51			*			

mat'l. code		tolerances unless otherwise specified		CUSTOMER COPY		ELECTRONICS www.fciconnect.com	
ltr	ecn no	dr	date	linear	.XX±.01/X ±.3	projection	
U					.XXX±.005/XX ±.13		
				angles	.XXX±.0020/XXX ±.051	INCH/MM 	product family BERGSTIK size dwg no
				dr	0° ±2°		
				enr	J. W. BAIR 4/26/89	code 22526	
				chr	M. LEACH 4/26/89		sheet 4 of 4
				appd	M. LEACH 4/26/89		
sheet index	revision sheet						