

5746443-1 ✓ ACTIVE

[AMP-LATCH](#) | [AMP-LATCH Universal Headers](#)

TE Internal #: 5746443-1

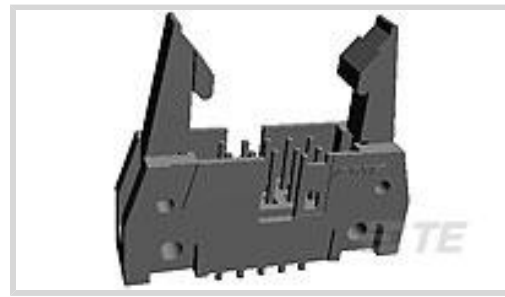
Ribbon Cable Connectors, Wire-to-Board, 10 Position, .1 in [2.54 mm] Centerline, Vertical, Through Hole - Press-Fit, AMP-LATCH Universal Headers

[View on TE.com >](#)



[Connectors](#) > [PCB Connectors](#) > [Wire-to-Board Connectors](#) > [FFC, FPC & Ribbon Connectors](#) > [Ribbon Cable Connectors](#) >

[AMP-LATCH UNIVERSAL HEADERS](#)



Connector System: **Wire-to-Board**

Number of Positions: **10**

Centerline (Pitch): **2.54 mm [.1 in]**

PCB Mount Retention: **With**

PCB Mount Retention Type: **Action/Compliant Tail**

[All AMP-LATCH UNIVERSAL HEADERS \(525\)](#)

Features

Product Type Features

| | |
|------------------------------------|--------------------------------|
| Connector Type | Header |
| Ribbon Cable Connector Header Type | Universal Ejection Pin Headers |
| Connector Mating Latch & Lock Type | Long |
| Connector Product Type | Connector Assembly |
| Connector System | Wire-to-Board |
| Connector & Housing Type | Plug |
| Connector & Contact Terminates To | Printed Circuit Board |

Configuration Features

| | |
|-----------------------|----------|
| Number of Positions | 10 |
| PCB Mount Orientation | Vertical |
| Number of Rows | 2 |

Electrical Characteristics

| | |
|-----------------------|---------|
| Insulation Resistance | 5000 MΩ |
|-----------------------|---------|

Body Features

| | |
|-------------------|----------|
| Connector Profile | Standard |
|-------------------|----------|

Contact Features



| | |
|---|----------------------------|
| Mating Square Post Dimension | .64 mm[.025 in] |
| PCB Contact Termination Area Plating Material Thickness | 2.54 μ m[100 μ in] |
| Contact Type | Pin |
| Contact Mating Area Plating Material Thickness | .76 μ m[30 μ in] |
| Contact Mating Area Plating Material | Gold |
| Contact Shape & Form | Square |
| PCB Contact Termination Area Plating Material | Tin |
| Contact Base Material | Brass, Phosphor Bronze |
| Contact Current Rating (Max) | 1 A |

Termination Features

| | |
|---|--------------------------|
| Square Termination Post & Tail Dimension | .64 mm[.025 in] |
| Termination Post & Tail Length | 4.42 mm[.174 in] |
| Termination Method to Printed Circuit Board | Through Hole - Press-Fit |

Mechanical Attachment

| | |
|--------------------------|-----------------------|
| Mating Alignment | With |
| PCB Mount Alignment | Without |
| Panel Mount Feature | Without |
| PCB Mount Retention | With |
| PCB Mount Retention Type | Action/Compliant Tail |
| Mating Alignment Type | Center & Dual |
| Mating Retention | With |
| Mating Retention Type | Ejection Latch |
| Connector Mounting Type | Board Mount |

Housing Features

| | |
|--------------------|------------------------------|
| Housing Material | Glass Filled Nylon/Polyester |
| Housing Color | Black |
| Centerline (Pitch) | 2.54 mm[.1 in] |

Dimensions

| | |
|-----------------------------|-------------------|
| Shrouded End Dimension | 3.81 mm[.15 in] |
| Connector Length | 32 mm[1.259 in] |
| Connector Height | 13.94 mm[.549 in] |
| PCB Thickness (Recommended) | 2.03 mm[.08 in] |



| | |
|--------------------|----------------|
| Row-to-Row Spacing | 2.54 mm[.1 in] |
|--------------------|----------------|

Usage Conditions

| | |
|-----------------------------|----------------------------|
| Housing Temperature Rating | Standard |
| Operating Temperature Range | -65 – 105 °C[-85 – 221 °F] |

Operation/Application

| | |
|---------------------|--------|
| Circuit Application | Signal |
|---------------------|--------|

Industry Standards

| | |
|------------------------|----------|
| UL Flammability Rating | UL 94V-0 |
|------------------------|----------|

Packaging Features

| | |
|--------------------|-----|
| Packaging Quantity | 18 |
| Packaging Method | Box |

Other

| | |
|---------|--|
| Comment | Pin headers in 10- and 14-position sizes have only one slot for snap-in polarizer (military polarization), located as shown. |
|---------|--|

Product Compliance

[For compliance documentation, visit the product page on TE.com>](#)

| | |
|---|--|
| EU RoHS Directive 2011/65/EU | Compliant |
| EU ELV Directive 2000/53/EC | Compliant |
| China RoHS 2 Directive MIIT Order No 32, 2016 | No Restricted Materials Above Threshold |
| EU REACH Regulation (EC) No. 1907/2006 | Current ECHA Candidate List: JUNE 2022 (224) Candidate List Declared Against: JAN 2022 (223) SVHC > Threshold: Not Yet Reviewed |
| Halogen Content | Not Low Halogen - contains Br or Cl > 900 ppm. |
| Solder Process Capability | Not applicable for solder process capability |

Product Compliance Disclaimer

This information is provided based on reasonable inquiry of our suppliers and represents our current actual knowledge based on the information they provided. This information is subject to change. The part numbers that TE has identified as EU RoHS compliant have a maximum concentration of 0.1% by weight in homogenous materials for lead, hexavalent chromium, mercury, PBB, PBDE, DBP, BBP, DEHP, DIBP, and 0.01% for cadmium, or qualify for an exemption to these limits as defined in the Annexes of Directive 2011/65/EU (RoHS2). Finished electrical and electronic equipment products will be CE marked as required by Directive 2011/65/EU. Components may not be CE marked. Additionally, the part numbers that TE has identified as EU ELV compliant have a maximum concentration of 0.1% by weight in homogenous

materials for lead, hexavalent chromium, and mercury, and 0.01% for cadmium, or qualify for an exemption to these limits as defined in the Annexes of Directive 2000/53/EC (ELV). Regarding the REACH Regulation, the information TE provides on SVHC in articles for this part number is based on the latest European Chemicals Agency (ECHA) 'Guidance on requirements for substances in articles' posted at this URL: <https://echa.europa.eu/guidance-documents/guidance-on-reach>

Compatible Parts

| | | | |
|---|---|---|---|
|  <p>TE Part # 499252-5 010 STRAIN RELIEF A-L RCPT</p> |  <p>TE Part # 3-1437020-7 609-1031HD=FSKT IDC S 10 SR</p> |  <p>TE Part # 1658621-1 10 NOVO MIL/CTR 15DP, LEAD FREE</p> |  <p>TE Part # 1658526-4 609-1030LF FEM SOCKET, LEAD FREE</p> |
|  <p>TE Part # 1658527-4 622-1041LF FEM SOCKET, LEAD FREE</p> |  <p>TE Part # 1658527-3 622-1030LF FEM SOCKET, LEAD FREE</p> |  <p>TE Part # 1658620-1 10 NOVO MIL 15DP, LEAD FREE</p> |  <p>TE Part # 1658526-5 609-1041LF FEM SOCKET, LEAD FREE</p> |
|  <p>TE Part # 1658622-1 10 NOVO MIL/CTR 30DP, LEAD FREE</p> |  <p>TE Part # 1658623-1 10 NOVO MIL 30DP, LEAD FREE</p> |  <p>TE Part # 1-1658528-1 636-1030LF=FEM SKT BLADE POL 1</p> |  <p>TE Part # 1658526-3 609-1000MLF FEM SCKT, LEAD FREE</p> |
|  <p>TE Part # 1658528-2 636-1041LF FEM SOCKET, LEAD FREE</p> |  <p>TE Part # 102320-1 UNIVERSAL HEADER LATCH</p> |  <p>TE Part # 1658624-1 10 NOVO DUAL 30DP, LEAD FREE</p> |  <p>TE Part # 2-1658528-5 636-1041LSLF FEMALE SOCKET CON</p> |

Also in the Series | **AMP-LATCH Universal Headers**

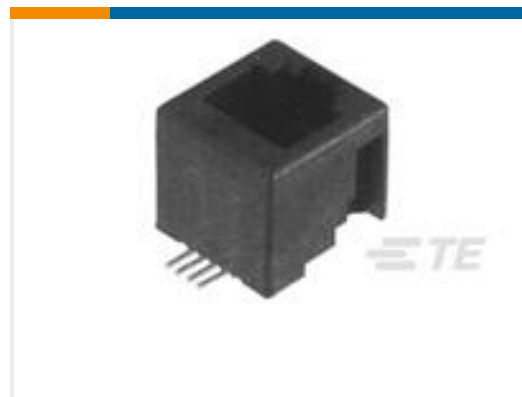
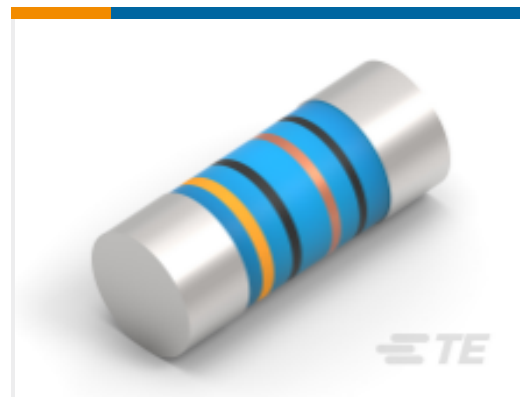
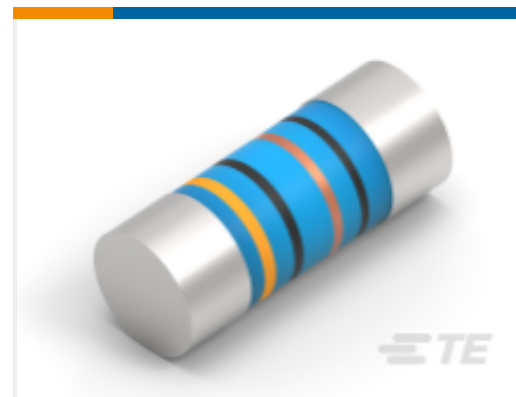
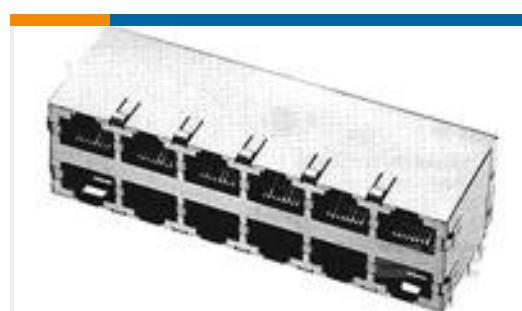
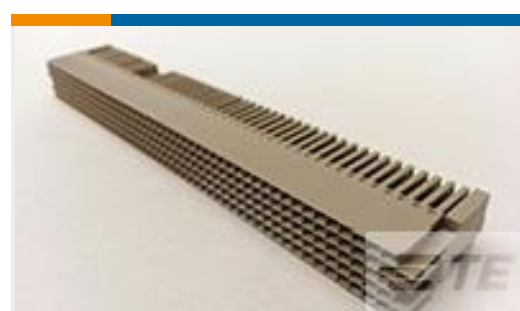


Ribbon Cable Connectors(525)



Ribbon Connector Accessories(13)

Customers Also Bought

TE Part #2-338086-3
6P/6C INV MJ, SMT 22" TOP REELTE Part #1-2176315-1
MELF SMA_A 680R 0.1% 15PPM 0204 0.4WTE Part #2-2176316-5
MELF SMA_A 10K 0.1% 15PPM 0207 1WTE Part #3-1393789-9
V23079A2011B301TE Part #6368296-1
ASSY,SHLD,2X8,STK MJ,WAVE PNLTE Part #8-1393704-1
V23552A2955E101= FEMALE 9SUTE Part #4-1879269-9
RP 2A 32R4 0.1% 15PPM CUT LENGTH

Documents

Product Drawings

[A/L UNIV HDR 10P ACT PIN LG LAT](#)

English

CAD Files

[3D PDF](#)

3D

Customer View Model

[ENG_CVM_CVM_5746443-1_C.2d_dxf.zip](#)

English

Customer View Model

[ENG_CVM_CVM_5746443-1_C.3d_igs.zip](#)

English

Customer View Model

[ENG_CVM_CVM_5746443-1_C.3d_stp.zip](#)

English

By downloading the CAD file I accept and agree to the [Terms and Conditions](#) of use.



Product Specifications

Application Specification

English

Product Environmental Compliance

TE Material Declaration

English