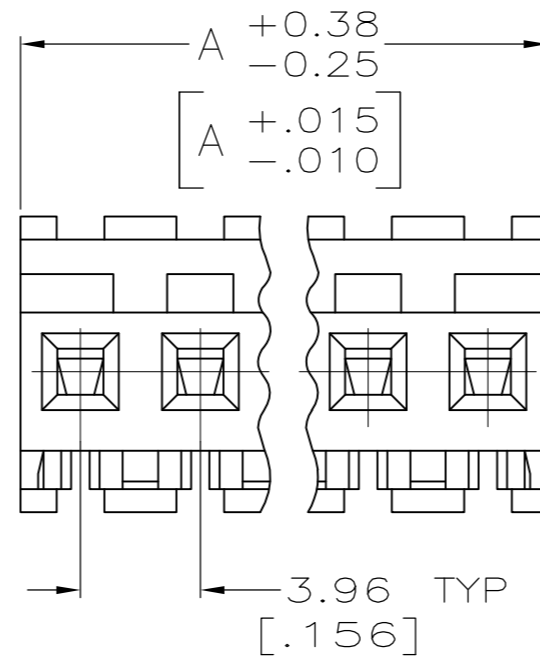
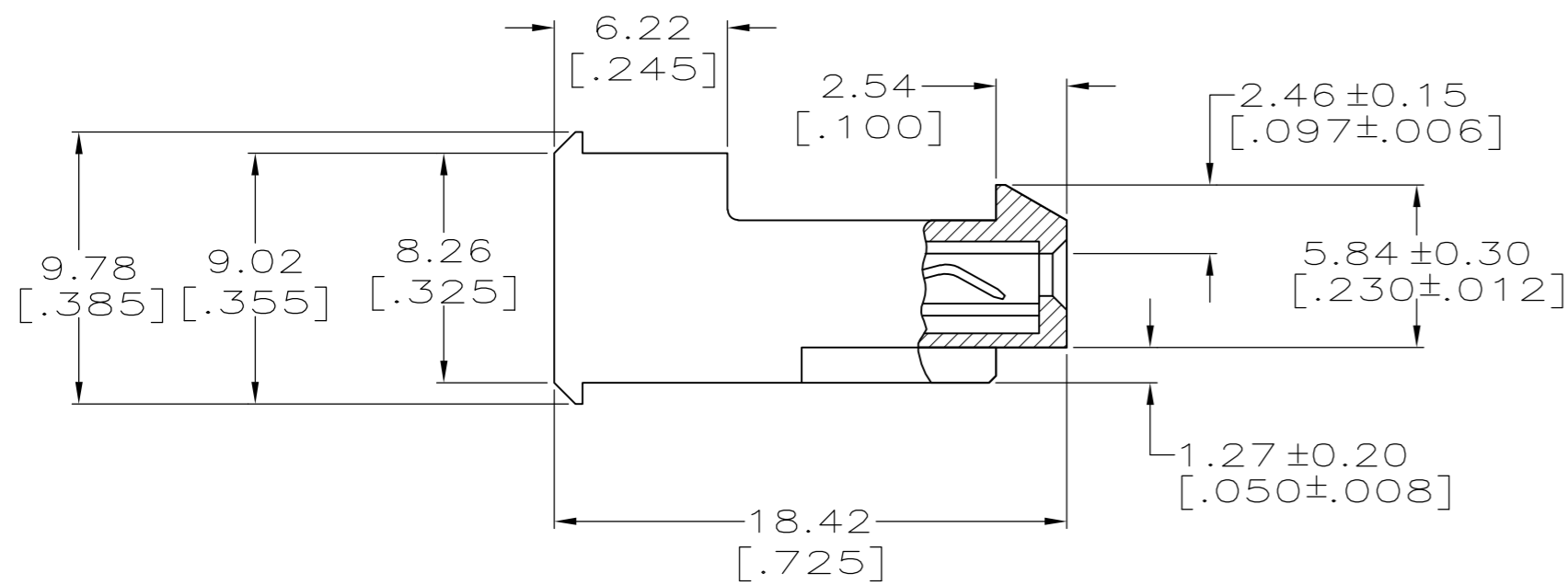
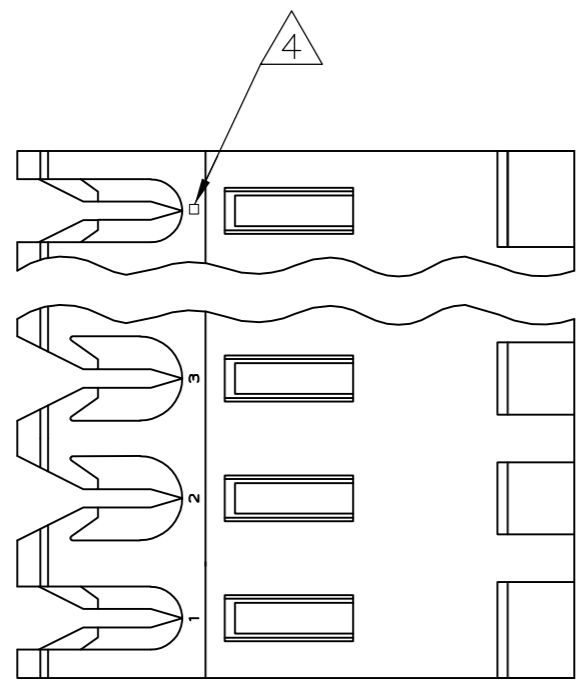


THIS DRAWING IS UNPUBLISHED. RELEASED FOR PUBLICATION
 © COPYRIGHT BY TYCO ELECTRONICS CORPORATION. ALL RIGHTS RESERVED.

LOC	DIST	REVISIONS			
P	LTR	DESCRIPTION	DATE	DWN	APVD
CM	0	K	ECO-07-012878	20JUN07	KW DB



CONTACT FINISH	DIM A	NO. OF CIRCUITS	PART NO.
TIN	95.10 [3.744]	24	5-641168-4
	91.14 [3.588]	23	5-641168-3
	87.17 [3.432]	22	5-641168-2
	83.21 [3.276]	21	5-641168-1
	79.25 [3.120]	20	5-641168-0
	75.29 [2.964]	19	4-641168-9
	71.32 [2.808]	18	4-641168-8
	67.36 [2.652]	17	4-641168-7
	63.40 [2.496]	16	4-641168-6
	59.44 [2.340]	15	4-641168-5
	55.47 [2.184]	14	4-641168-4
	51.51 [2.028]	13	4-641168-3
	47.55 [1.872]	12	4-641168-2
	43.59 [1.716]	11	4-641168-1
	39.62 [1.560]	10	4-641168-0
	35.66 [1.404]	9	3-641168-9
	31.70 [1.248]	8	3-641168-8
	27.74 [1.092]	7	3-641168-7
	23.77 [.936]	6	3-641168-6
	19.81 [.780]	5	3-641168-5
	15.85 [.624]	4	3-641168-4
	11.89 [.468]	3	3-641168-3
	7.92 [.312]	2	3-641168-2
	TIN-LEAD	95.10 [3.744]	24
91.14 [3.588]		23	2-641168-3
87.17 [3.432]		22	2-641168-2
83.21 [3.276]		21	2-641168-1
79.25 [3.120]		20	2-641168-0
75.29 [2.964]		19	1-641168-9
71.32 [2.808]		18	1-641168-8
67.36 [2.652]		17	1-641168-7
63.40 [2.496]		16	1-641168-6
59.44 [2.340]		15	1-641168-5
55.47 [2.184]		14	1-641168-4
51.51 [2.028]		13	1-641168-3
47.55 [1.872]		12	1-641168-2
43.59 [1.716]		11	1-641168-1
39.62 [1.560]		10	1-641168-0
35.66 [1.404]		9	641168-9
31.70 [1.248]		8	641168-8
27.74 [1.092]		7	641168-7
23.77 [.936]		6	641168-6
19.81 [.780]		5	641168-5
15.85 [.624]		4	641168-4
11.89 [.468]		3	641168-3
7.92 [.312]		2	641168-2

1 MATERIAL:
 CONNECTOR - NYLON UL94V-2 (ORANGE).
 CONTACTS - 0.30[.012] THICK COPPER ALLOY.
 PLATING - 0.00038[.000015] GOLD IN CONTACT AREA.
 0.00203[.000080] MIN THICKNESS BRIGHT TIN LEAD IN SLOT AREA FOR 641168-2 THRU 2-641168-4 OR MATTE WHISKER MITIGATED TIN IN SLOT AREA FOR 3-641168-2 THRU 5-641168-4 OVER NICKEL UNDERPLATE.

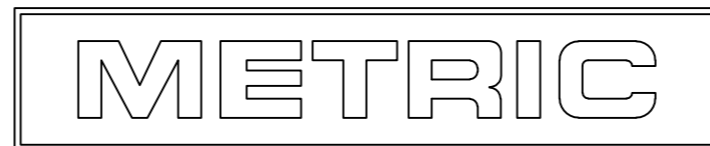
- 2. CONTACTS ACCEPT 18 AWG WIRE WITH 2.41[.095] MAX INSULATION DIAMETER.
- 3. CONTACTS MUST ACCEPT 1.14±0.03[.045±.001] SQUARE POST AND REMAIN LOCKED IN POSITION.

4 IDENTIFICATION NUMBER FOR LAST CIRCUIT MAY NOT APPEAR ON ALL ASSEMBLIES.

5. DIMENSIONS IN BRACKETS ARE IN INCHES.

6. HOUSING FEATURES ARE: FEED-THRU WITH LOCKING RAMP.

- NOTE DELETED.
- NOTE DELETED.



THIS DRAWING IS A CONTROLLED DOCUMENT.

DWN B. LEWIS 2-12-91	Tyco Electronics Corporation Harrisburg, Pa 17105-3608
CHK R. SWING 2-20-91	
APVD -	NAME
PRODUCT SPEC 108-1051	MTA-156 CONNECTOR ASSEMBLY, 18 AWG, STANDARD
APPLICATION SPEC 114-1020	
WEIGHT -	SIZE A2 CAGE CODE 00779 DRAWING NO C=641168
CUSTOMER DRAWING	RESTRICTED TO -

SCALE 4:1 SHEET 1 OF 1 REV K