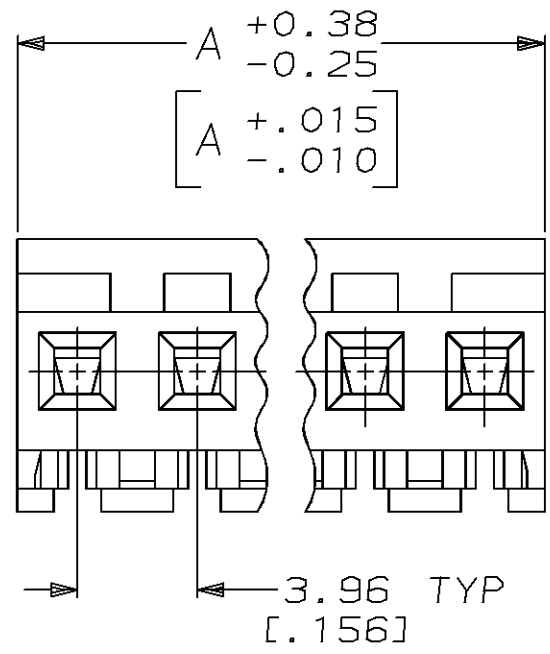
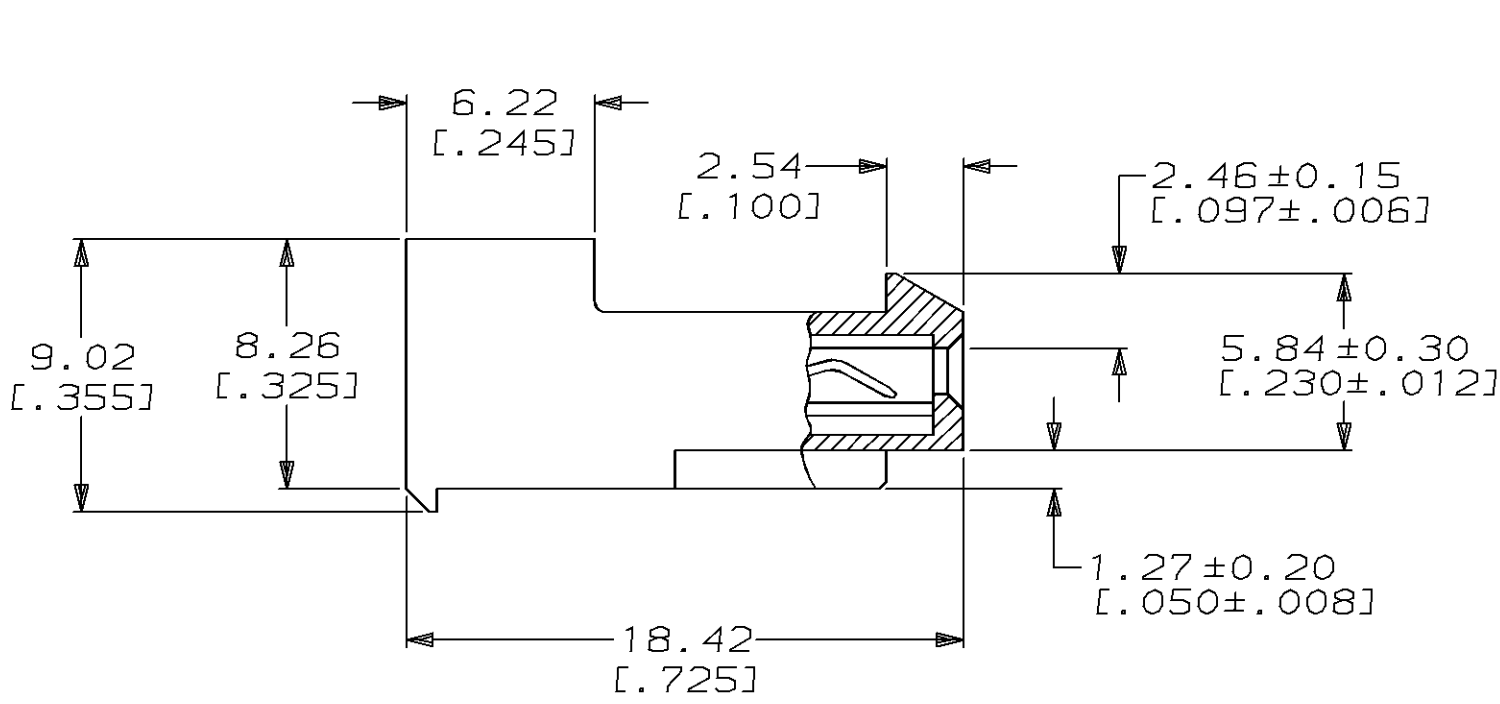
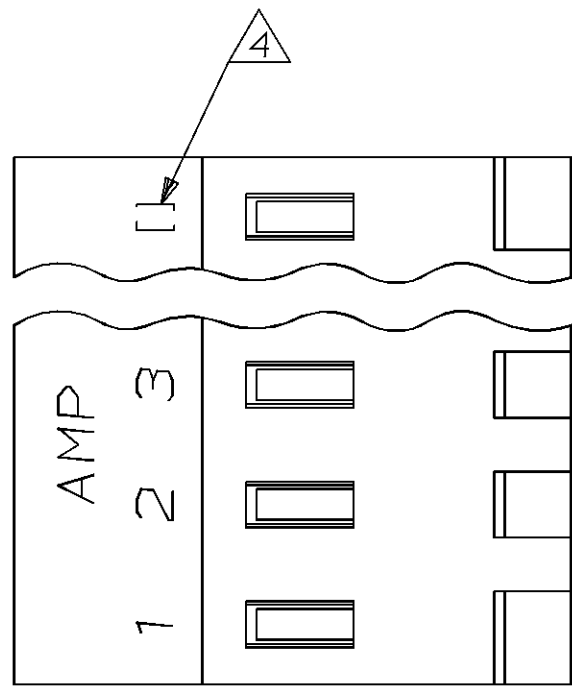


THIS DRAWING IS UNPUBLISHED. RELEASED FOR PUBLICATION, 19 .  
 © COPYRIGHT 19 BY AMP INCORPORATED. ALL INTERNATIONAL RIGHTS RESERVED.

LOC	DIST	P	F	ZONE	LTR	REVISIONS	DATE	APPD
CM	54				G	REACT -2 THRU -24 AND REV PER EC 0730-0242-95	3-11-96	BL RS



95.10	[3.744]	24	2-641221-4
91.14	[3.588]	23	2-641221-3
87.17	[3.432]	22	2-641221-2
83.21	[3.276]	21	2-641221-1
79.25	[3.120]	20	2-641221-0
75.29	[2.964]	19	1-641221-9
71.32	[2.808]	18	1-641221-8
67.36	[2.652]	17	1-641221-7
63.40	[2.496]	16	1-641221-6
59.44	[2.340]	15	1-641221-5
55.47	[2.184]	14	1-641221-4
51.51	[2.028]	13	1-641221-3
47.55	[1.872]	12	1-641221-2
43.59	[1.716]	11	1-641221-1
39.62	[1.560]	10	1-641221-0
35.66	[1.404]	9	641221-9
31.70	[1.248]	8	641221-8
27.74	[1.092]	7	641221-7
23.77	[.936]	6	641221-6
19.81	[.780]	5	641221-5
15.85	[.624]	4	641221-4
11.89	[.468]	3	641221-3
7.92	[.312]	2	641221-2

- ① MATERIAL: CONNECTOR - NYLON UL94V-2 (BLUE).  
 CONTACTS - 0.30 [.012] THICK COPPER ALLOY  
 (0.00076 [.000030] GOLD)
- CONTACTS ACCEPT 26 AWG WIRE WITH 2.41 [.095] MAX INSULATION DIAMETER.
  - CONTACTS MUST ACCEPT 1.14±0.03 [.045±.001] SQUARE POST AND REMAIN LOCKED IN POSITION.
- ④ IDENTIFICATION NUMBER FOR LAST CIRCUIT MAY NOT APPEAR ON ALL ASSEMBLIES.
- DIMENSIONS IN BRACKETS ARE IN INCHES.
  - HOUSING FEATURES ARE: CLOSED END WITH LOCKING RAMP.

DO NOT SCALE PRINT. UNLESS SPECIFIED DIMENSIONS IN mm [INCHES] TOLERANCES ON : 2 PLC DEC ± - 3 PLC DEC ± 0.13 [.005] ANGLES ± -	DR 3-11-96 B. LEWIS	AMP Incorporated Harrisburg, PA 17105-3608	
	CHK 3-11-96 R. SWING		
MATERIAL ①	APPD 3-11-96 D. CLARK	NAME	
	APPD 3-11-96 D. CLARK	MTA-156 CONNECTOR ASSEMBLY, 26 AWG, STANDARD	
FINISH ①	PRODUCT SPEC 108-1051	SIZE	CAGE CODE
	APPLICATION SPEC 114-1020	③	00779
WEIGHT -		DRAWING NO	641221
		SCALE 4:1	SHEET 1 OF 1

