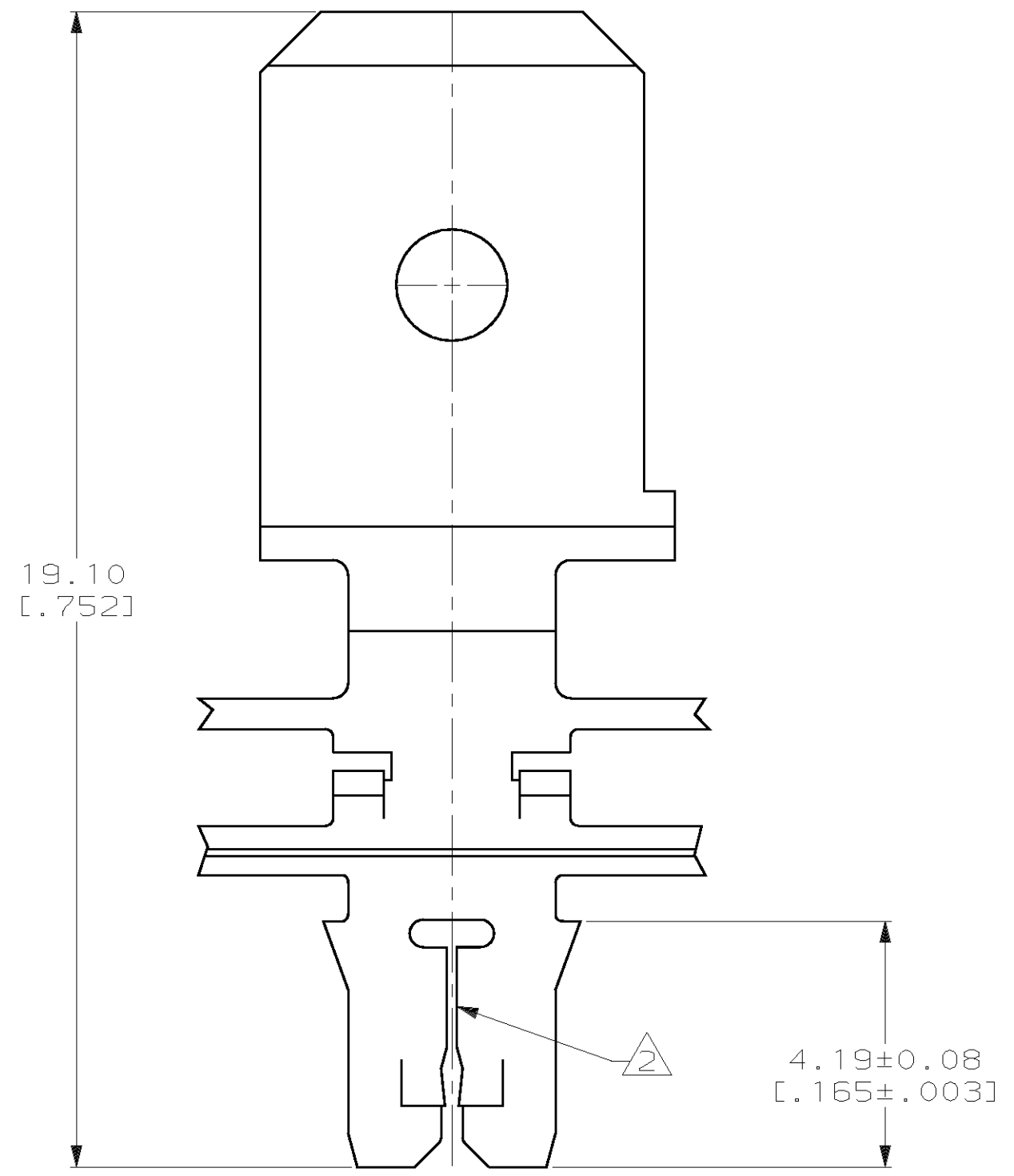
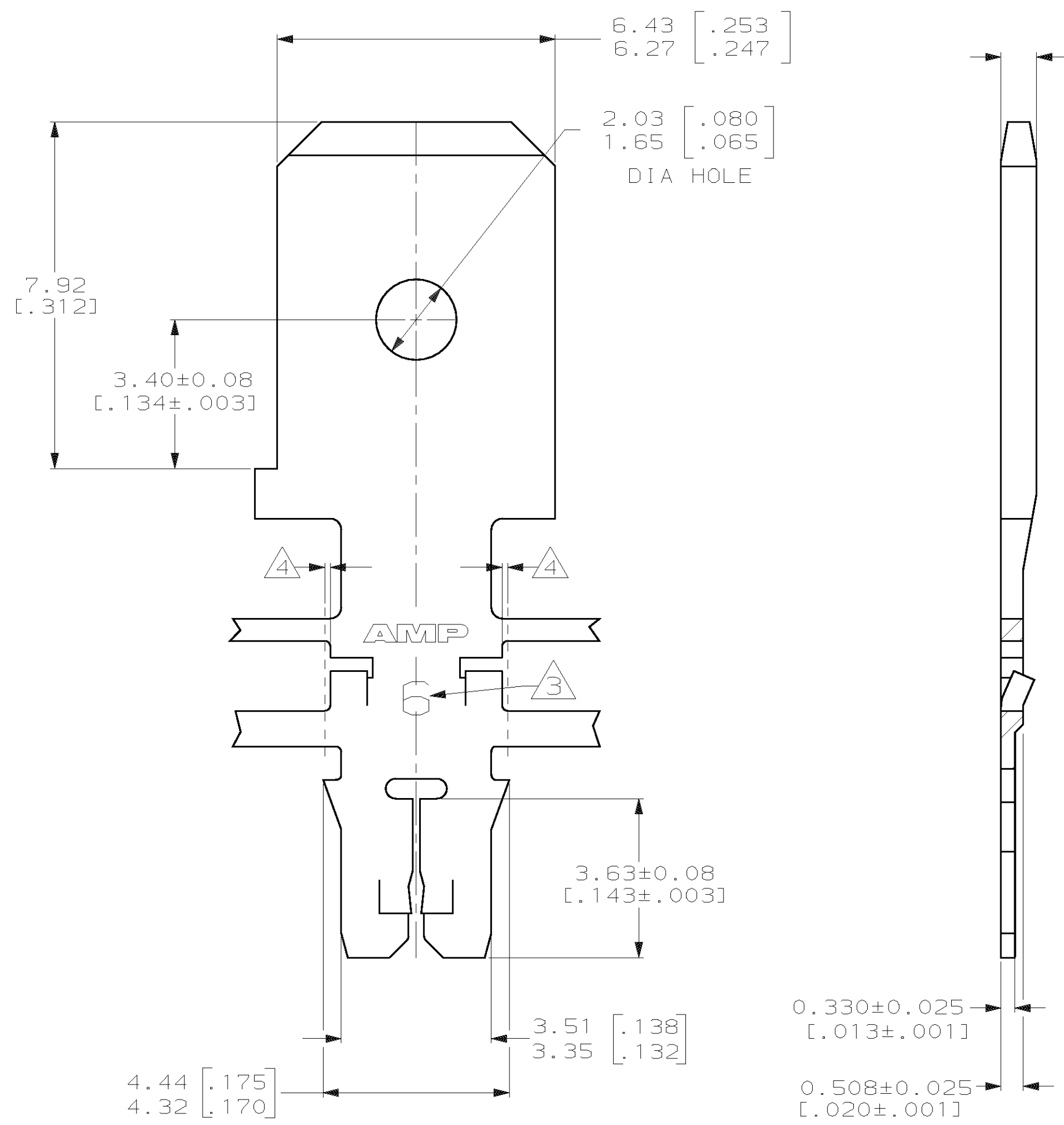


THIS DRAWING IS UNPUBLISHED. RELEASED FOR PUBLICATION ,19 .
 © COPYRIGHT 19 BY AMP INCORPORATED. ALL INTERNATIONAL RIGHTS RESERVED.

LOC		DIST		P		F		ZONE		LTR		REVISIONS		DATE	APPD
AF	50												ADDED -2 PER 063A-0456-01	020CT01	MF-KR

- 1 CONTINUOUS STRIP ON REELS WITH TERMINALS LOCATED ON 8.38±0.08 [.330±.003] CENTERS
- 2 SLOT ACCEPTS 0.25-0.32mm [#30-#28] AWG COPPER MAGNET WIRE. TWO WIRES OF THE SAME SIZE MAX PER SLOT
- 3 IDENTIFICATION NUMBER 6 FOR THE MAGNET WIRE SLOT SIZE
- 4 0.25 [.010] MAX CARRIER CUT-OFF TABS.
- 5 PRELIMINARY - NOT FOR PRODUCTION.



MATERIAL	PART NO
082 PRE-MILLED BRASS	63717-2
4M PRE-MILLED BRASS	63717-1

DO NOT SCALE PRINT. UNLESS SPECIFIED DIMENSIONS IN mm [INCHES] TOLERANCES ON : 2 PLC DEC ± 0.13 [.005] 3 PLC DEC ± - ANGLES ± -	DR 9-27-93 L.A.MAYER	AMP Incorporated Harrisburg, PA 17105-3608	
	CHK 9-27-93 M.S. FEHER		
MATERIAL SEE TABLE	APPD 9-27-93 A.HUNT III	TAB, 6.35 [.250] FASTON™ MAG-MATE™ Slim Line	
	APPD 9-27-93 T.L.SHUTTER	PRODUCT SPEC	SIZE
FINISH 0.002032 [.000080] MIN TIN PLATE	108-1484	APPLICATION SPEC	CAGE CODE
	114-2140	114-2140	00779
WEIGHT -		SCALE 10:1	DRAWING NO
			C=63717
			SHEET 1 OF 1

THIS DRAWING IS A CONTROLLED DOCUMENT FOR AMP INCORPORATED. IT IS SUBJECT TO CHANGE AND THE CONTROLLING ENGINEERING ORGANIZATION SHOULD BE CONTACTED FOR THE LATEST REVISION.