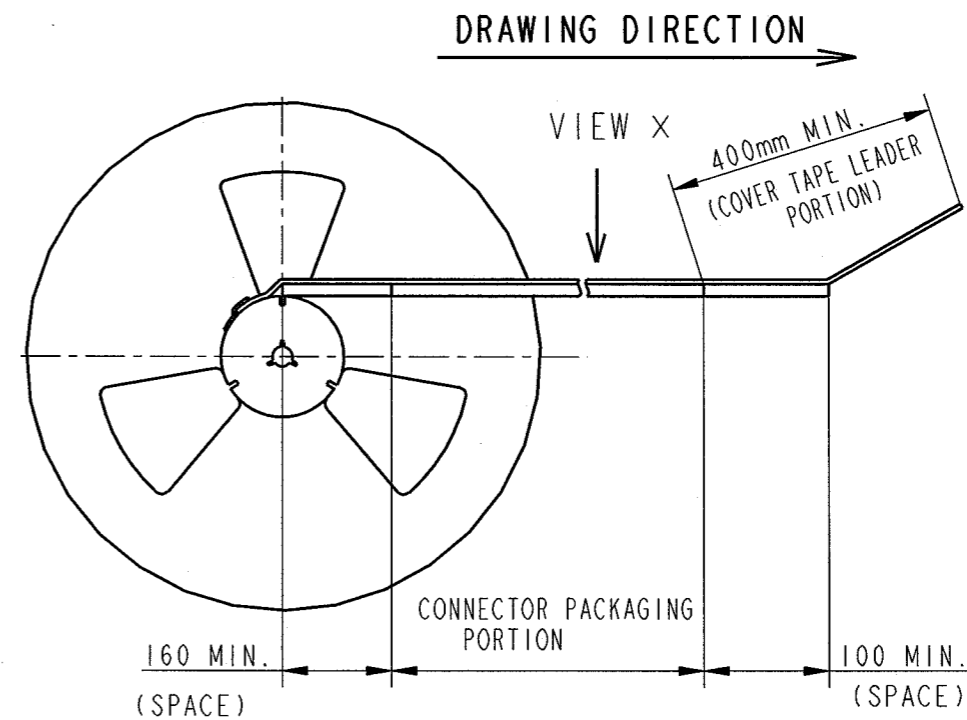
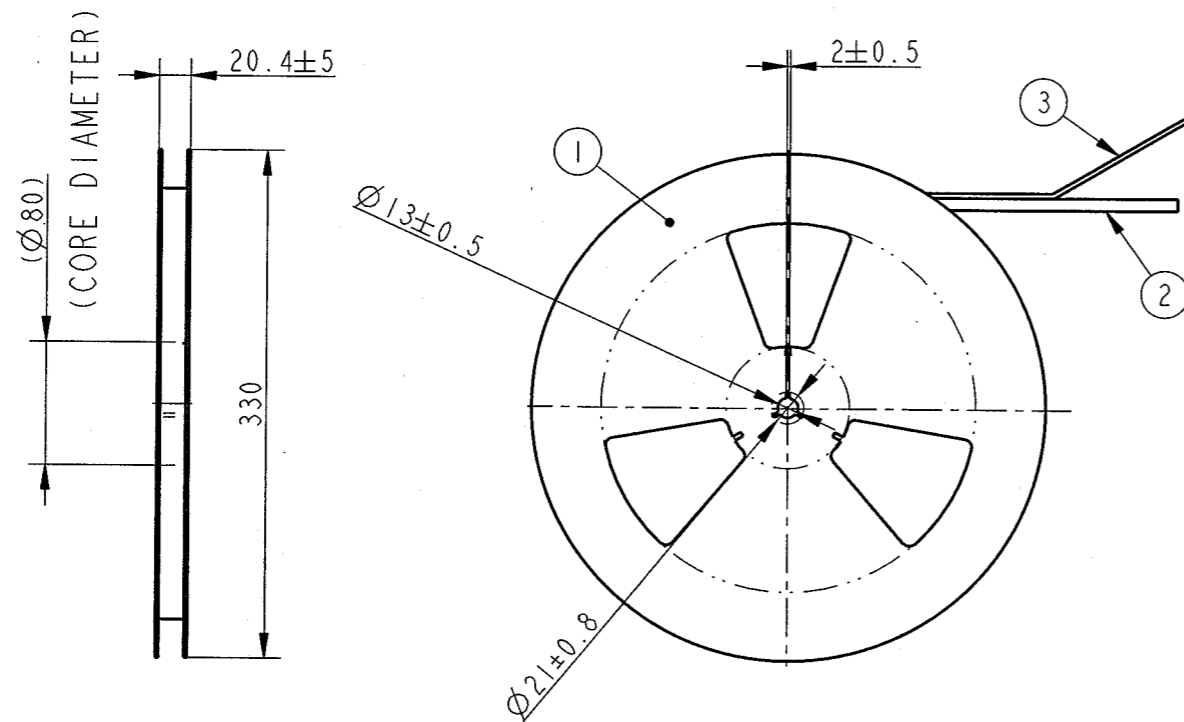


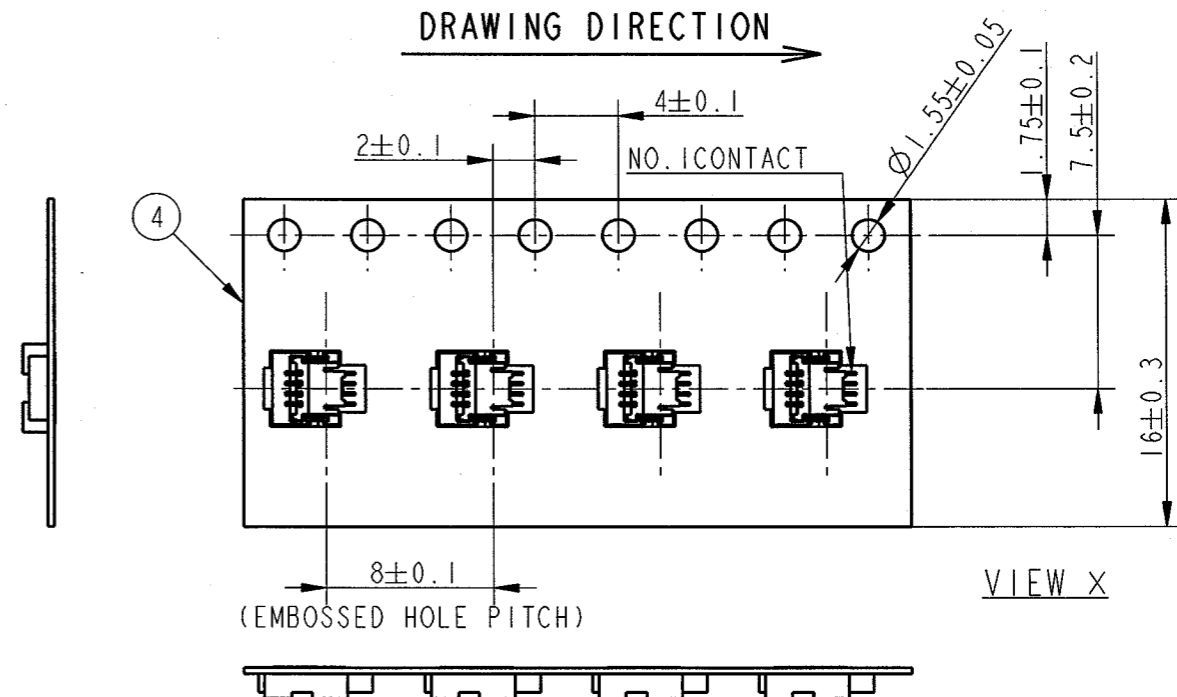
PRODUCT NO.	NO. OF CONTACTS
59453-041110	4 CONTACTS
59453-051110	5 CONTACTS
59453-061110	6 CONTACTS

REVISIONS				
REV	DESCRIPTION	ECN	BY	DATE
A	RELEASED	J03-0282	M.K	Sep.10.'03



CONNECTOR PACKAGING STYLE

DRAWING DIRECTION



PT. NO.	PARTS NAME	PRODUCT NO.	MATERIAL	Q'TY	NOTE
1	REEL	----	CARDBOARD	1	
2	PLASTIC (EMBOSS) TAPE	----	PP OR PET	1	
3	COVER TAPE	----	POLYESTER	1	
4	CONNECTOR	59453-0_111	SEE ATTACHED DWG.	5,000	CONTACT AREA: GOLD TERMINAL: TIN ALLOY

NOTES

1. THIS IS PLASTIC TAPE PACKAGED CONNECTOR USED FOR FPC AND COPES WITH AUTOMATIC MOUNTING.
2. SEE JIS C 0806 (PACKING OF ELECTRONIC COMPONENTS ON CONTINUOUS TAPES (SURFACE MOUNTING DEVICES)) FOR SHAPE AND DIMENSIONS OF PLASTIC (EMBOSS) TAPE AND REEL.
3. THIS DIMENSION IS PORTION OF THE CORE.

SHEET INDEX	ISSUE SH. NO.	A	A												
	1	2													
TOLERANCES UNLESS OTHERWISE SPECIFIED		MAT		DR		DATE		CUSTOMER COPY		TITLE		SCALE		REV SHEET	
±5		SEE NOTE		ENGR		6/16/03		M.K		PLASTIC TAPE PACKAGED 0.5mm PITCH FPC CONNECTOR (DOWNSIDE CONTACT TYPE)		N/A		A 1 of	
LINEAR		FINISH		CHR		9/03		THIRD ANGLE PROJ		DWG. NO.		59453			
ANGLES		±5°		APP		9/03		UNIT		MM					

DF-003 REV F

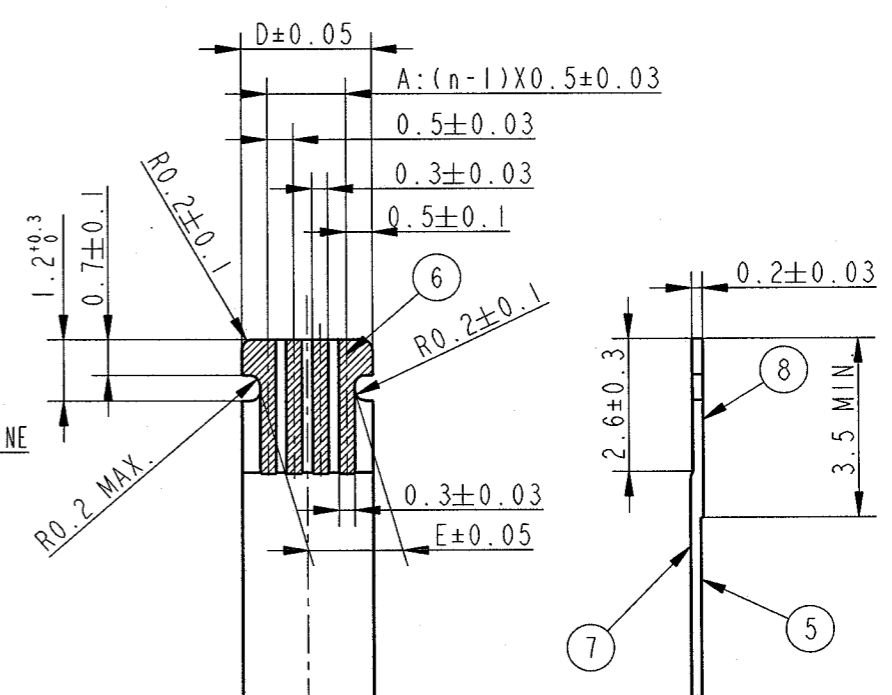
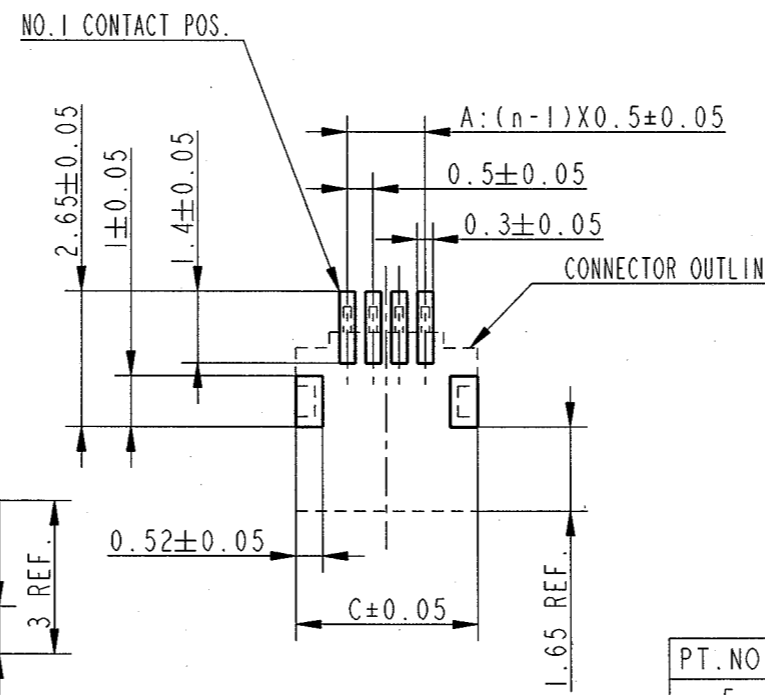
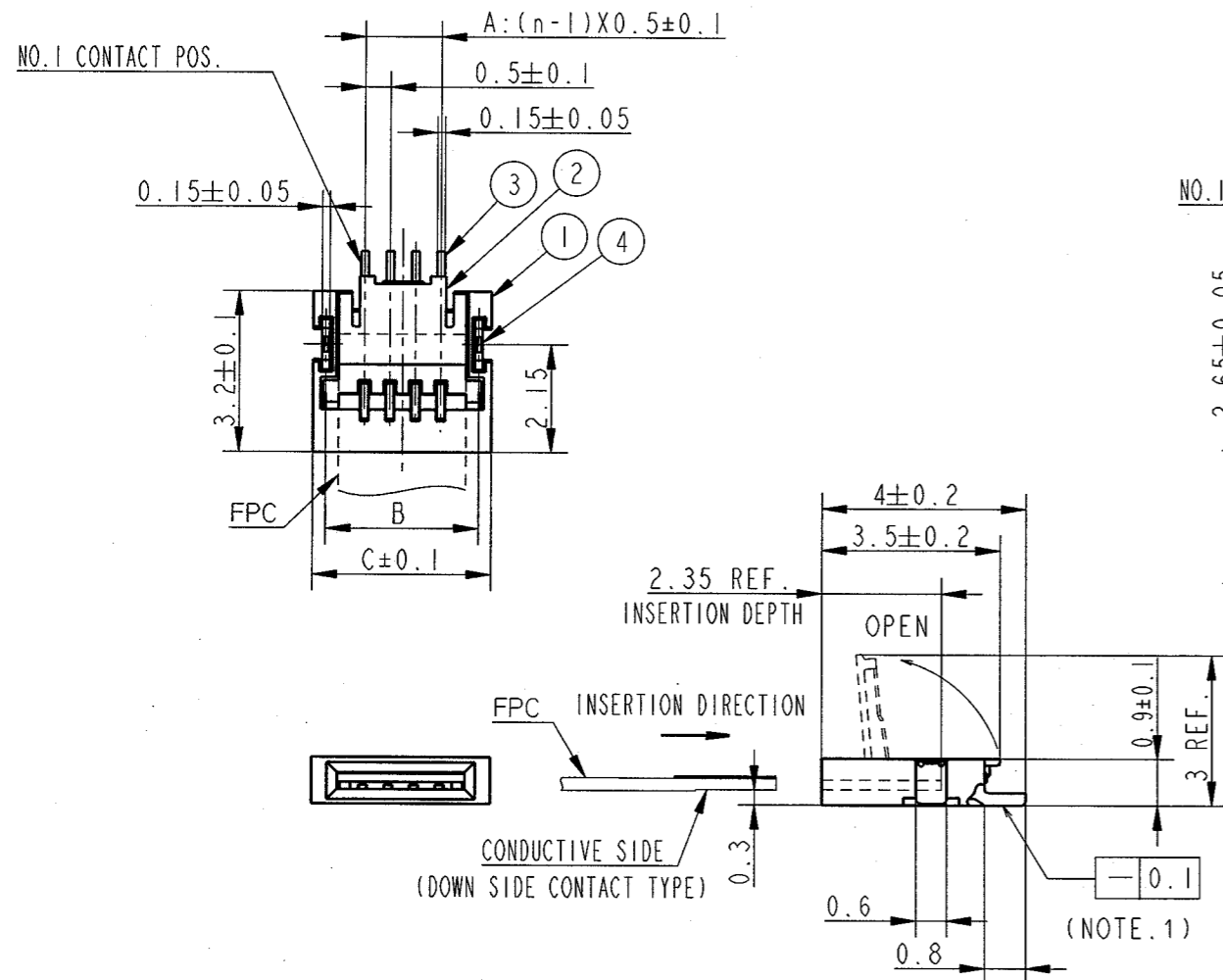
DO NOT SCALE PRINT THIS INFORMATION IS CONFIDENTIAL AND IS DISCLOSED TO YOU ON CONDITION THAT NO FURTHER DISCLOSURE IS MADE BY YOU TO OTHER THAN FCI PERSONNEL WITHOUT WRITTEN AUTHORIZATION FROM FCI JAPAN S.R.

PRODUCT NO.	NO. OF CONTACTS
59453-04111	4 CONTACTS
59453-05111	5 CONTACTS
59453-06111	6 CONTACTS

REVISIONS				
REV	DESCRIPTION	ECN	BY	DATE
A	RELEASED	J03-0282	M.K	Sep.16, '93

RECOMMENDED PC BOARD LAYOUT
(COMPONENT SIDE)

RECOMMENDED FPC



PT. NO.	PARTS NAME	MATERIAL	NOTE
5	BASE FILM	POLYIMIDE	
6	CONDUCTOR	COPPER FOIL (PLATING : GOLD 0.1μm MIN.)	
7	OVERLAY	POLYIMIDE	
8	SUPPORTING TAPE	POLYIMIDE	

NOTE: Adhesive method of supporting tape shall be heat crimping method and thermosetting adhesive shall be used.

PT. NO.	PARTS NAME	MATERIAL	Q'TY	NOTE
1	HOUSING	THERMOPLASTIC RESIN (UL94V-0)	1	COLOR:BLACK
2	ACTUATOR	THERMOPLASTIC RESIN (UL94V-0)	1	COLOR:BLACK
3	CONTACT	COPPER ALLOY	n	PLATING: CONTACT AREA:GOLD OVER NICKEL TERMINAL:TIN ALLOY
4	FIXING TAB	BRASS	2	PLATING:TIN ALLOY

n=NO. OF CONTACTS

NOTE
1. COPLANARITY FOR CONTACT TERMINAL AND FIXING TAB MUST BE WITHIN 0.1mm.


PRODUCT NO. AND DIMENSIONS

PRODUCT NO.	DIMENSIONS				
	A	B	C	D	E
59453-04111(4 CONTACTS)	1.5	3.0	3.5	2.5	1.8
59453-05111(5 CONTACTS)	2.0	3.5	4.0	3.0	2.3
59453-06111(6 CONTACTS)	2.5	4.0	4.5	3.5	2.8

DF-003 REV F

DO NOT SCALE PRINT THIS INFORMATION IS CONFIDENTIAL AND IS DISCLOSED TO YOU ON CONDITION THAT NO FURTHER DISCLOSURE IS MADE BY YOU TO OTHER THAN FCI PERSONNEL WITHOUT WRITTEN AUTHORIZATION FROM FCI JAPAN K.K.

SHEET INDEX	ISSUE SH. NO.	MAT	DR	DATE	CUSTOMER COPY
		SEE NOTE	ENGR		
LINER	±0.3	FINISH	CHK		THIRD ANGLE PROJ
ANGLES			APPR		UNIT



FCI

TITLE 0.5mm PITCH FPC CONECTOR
DOWNSIDE CONTACT TYPE

SCALE SIZE DWG. NO. REV SHEET
X C 59453 A 2 OF