

# SERIES 61

## .250" PCB Barrier Terminal Strip

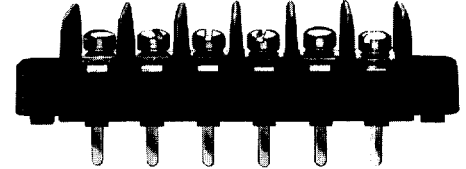
### Description

The series 61 barrier terminal strip is our smallest, highest density product. The product series offers an alternative to European designs which require under-sized screwdrivers, often not carried by field technicians.

Made in the USA, all Beau terminal blocks embody the highest quality standards in the industry - using the finest materials and world class manufacturing processes. They meet or exceed all applicable industry standards.

### Features

- **High density**, .250" spacing, uses minimum PCB area.
- **No special tools** are required for the 61 series tri-barrier terminal strip. A common No. 2 screwdriver is used to terminate the wires.
- **Mold to exact length**, with no ugly saw cuts, Beau terminal strips make your products look more professional. The terminal block is the one component that your customer is sure to see.



### PRODUCT RATINGS

#### #3-48 FILLISTER HEAD SCREW

UL	Class B	10 Amps @ 300 V	18 AWG
	Class C	10 Amps @ 150 V	18 AWG
CSA	Class B	10 Amps @ 150 V	18 AWG
	Class C	10 Amps @ 150 V	18 AWG

#### #3-48 WIRE CLAMP SCREW

UL	Class B	10 Amps @ 300 V	18 AWG
	Class C	10 Amps @ 150 V	18 AWG
CSA	Class B	10 Amps @ 150 V	18 AWG
	Class C	10 Amps @ 150 V	18 AWG
	Class D	10 Amps @ 150 V	18 AWG

### APPROVALS

UL	File No. E48521
	Guide No. XCFR2
CSA	File No. 025562

### TECHNICAL SPECIFICATIONS

#### ELECTRICAL

DWV	10500 VDC
IR	>5000 Megohms

#### MECHANICAL

Tightening torque	3 in-lbs.
Maximum torque	3.5 in-lbs.
Wire strip length	5/16"
Wire Range	18 to 22 AWG

#### ENVIRONMENTAL

Continuous Use Temp	
RTI electrical	130°C
RTI mechanical w/o impact	140°C

### MATERIALS

Insulator	Thermoplastic, UL94V-0, black
Terminal	Brass, tin-lead plate
Screws	#3-48, phillips/slotted, brass, nickel plate

### OPTIONS

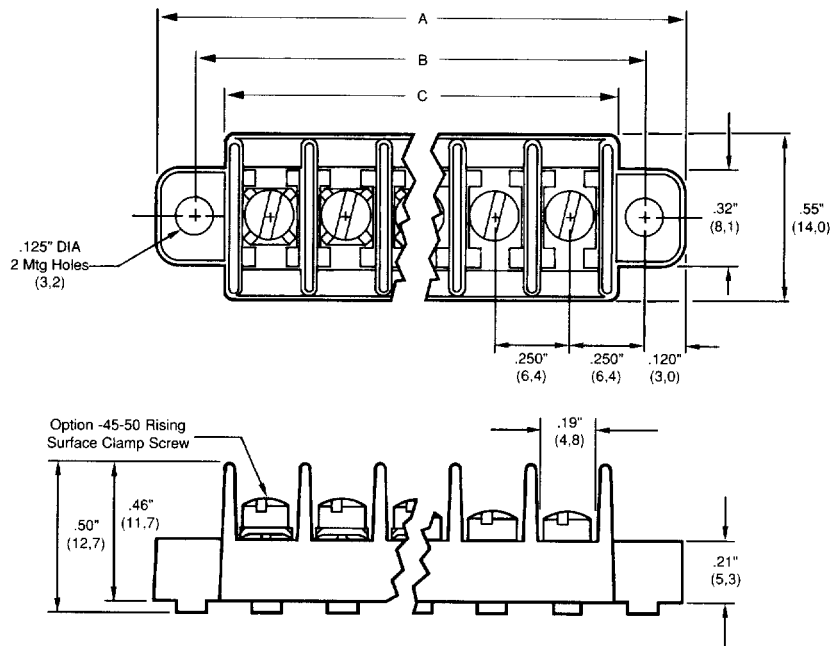
-45	Slotted screw
-50	Clamp washer, phillips/slotted screw
-58	No screws, barrier only
-59	Screws supplied unassembled
-C	No mounting ends
-W	Supplied without standoff pads

### HOW TO ORDER

<b>6</b>	<b>1</b>	<b>X</b>	<b>X</b>	<b>X</b>	<b>X</b>	<b>X</b>
SERIES	TERMINAL STYLE	NO. OF POLES	OPTIONS			
	1 5	2 to 32	(Dash #s above and opposite page)			

\*Consult factory for combinations of screw options.

# SERIES 61

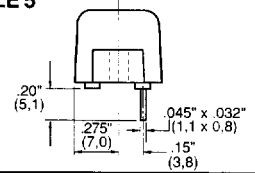


## TERMINAL STYLES

**STYLE 1**  
No PC  
Terminal



**STYLE 5**  
PC



No. of Circuits	A		B		C	
	in.	mm	in.	mm	in.	mm
2	.99	25.1	.75	19.1	.57	14.5
3	1.24	31.5	1.00	25.4	.82	20.8
4	1.49	37.8	1.25	31.8	1.07	27.2
5	1.74	44.2	1.50	38.1	1.32	33.5
6	1.99	50.5	1.75	44.5	1.57	39.9
7	2.24	56.9	2.00	50.8	1.82	46.2
8	2.49	63.2	2.25	57.2	2.07	52.6
9	2.74	69.6	2.50	63.5	2.32	58.9
10	2.99	75.9	2.75	69.9	2.57	65.3
11	3.24	82.3	3.00	76.2	2.82	71.6
12	3.49	88.6	3.25	82.6	3.07	78.0
13	3.74	95.0	3.50	88.9	3.32	84.3
14	3.99	101.3	3.75	95.3	3.57	90.7
15	4.24	107.7	4.00	101.6	3.82	97.0
16	4.49	114.0	4.25	108.0	4.07	103.4
17	4.74	120.4	4.50	114.3	4.32	109.7
18	4.99	126.7	4.75	120.7	4.57	116.1
19	5.24	133.1	5.00	127.0	4.82	122.4
20	5.49	139.4	5.25	133.4	5.07	128.8
21	5.74	145.8	5.50	139.7	5.32	135.1
22	5.99	152.1	5.75	146.1	5.57	141.5
23	6.24	158.5	6.00	152.4	5.82	147.8
24	6.49	164.8	6.25	158.8	6.07	154.2
25	6.74	171.2	6.50	165.1	6.32	160.5
26	6.99	177.5	6.75	171.5	6.57	166.9
27	7.24	183.9	7.00	177.8	6.82	173.2
28	7.49	190.2	7.25	184.2	7.07	179.6
29	7.74	196.6	7.50	190.5	7.32	185.9
30	7.99	202.9	7.75	196.9	7.57	192.3
31	8.24	209.3	8.00	203.2	7.82	198.6
32	8.49	215.6	8.25	209.6	8.07	205.0