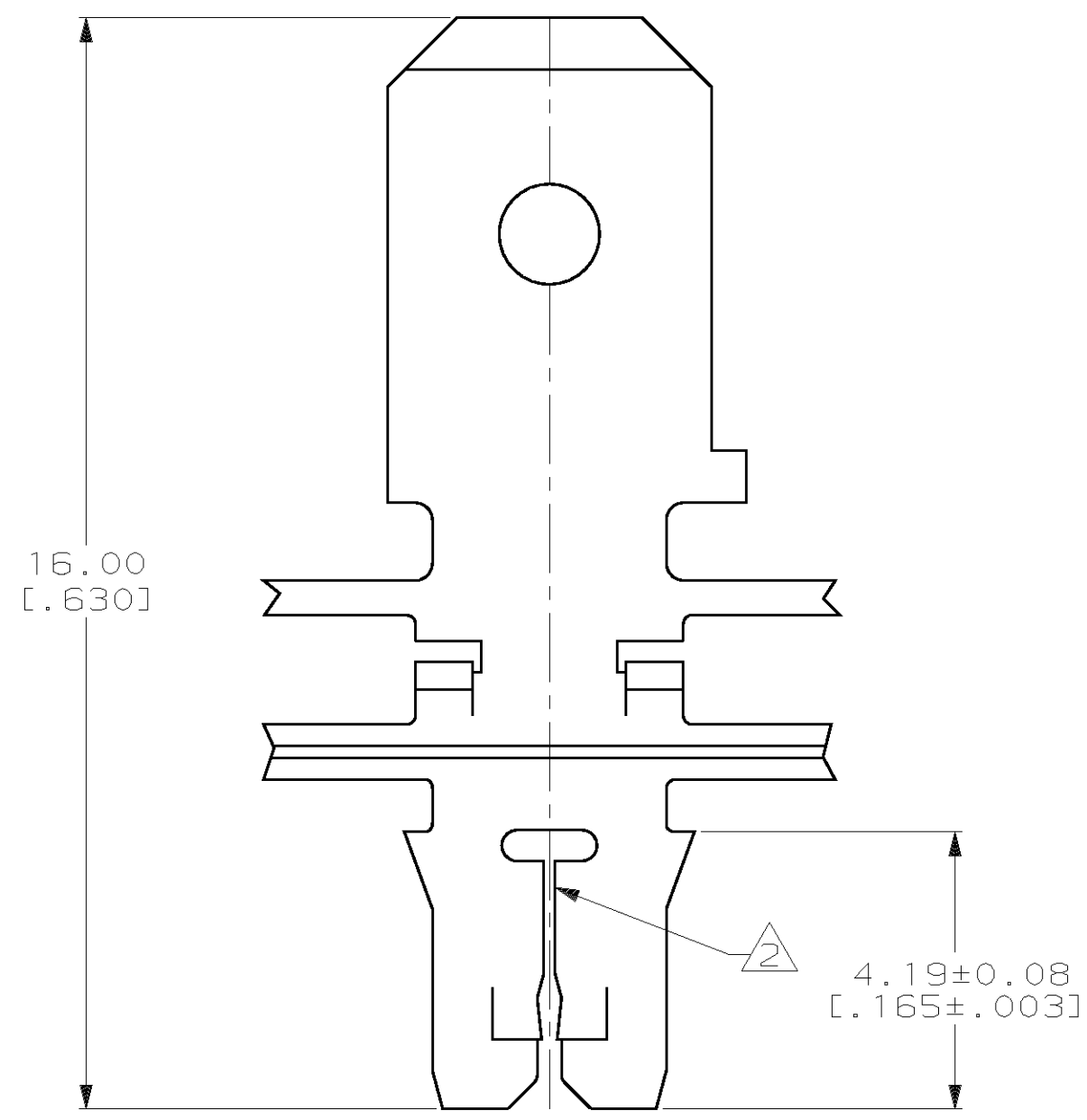
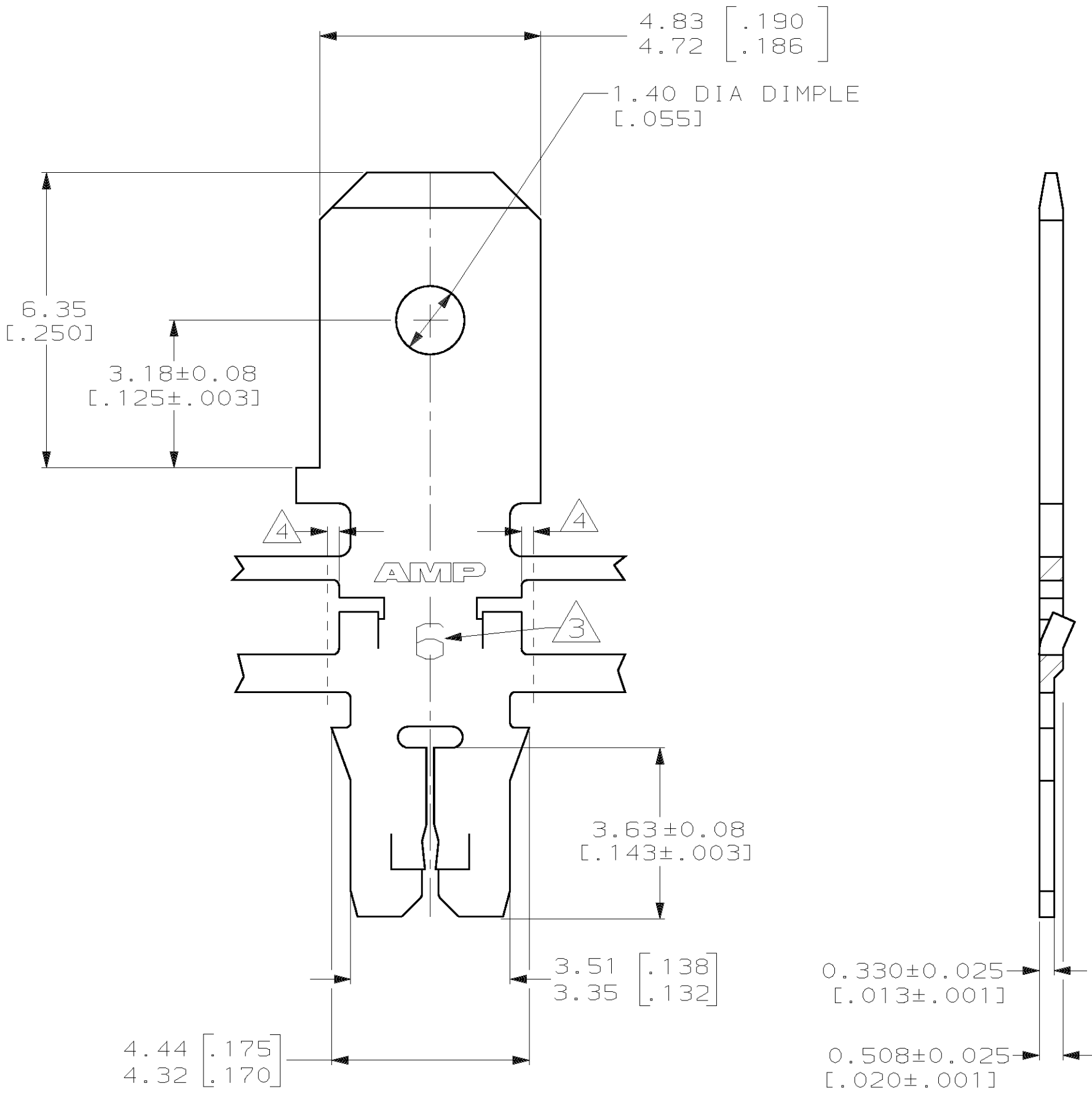


THIS DRAWING IS UNPUBLISHED. RELEASED FOR PUBLICATION, 19 .  
 © COPYRIGHT 19 BY AMP INCORPORATED. ALL INTERNATIONAL RIGHTS RESERVED.

LOC		DIST		REVISIONS				DATE	APPD
AF	50	P	F	ZONE	LTR	DESCRIPTION			
					E	ADDED -2 PER 063A-0456-01	020CT01	MF/KR	

- 1 CONTINUOUS STRIP ON REELS WITH TERMINALS LOCATED ON 6.86±0.08 [.270±.003] CENTERS
- ② SLOT ACCEPTS 0.25-0.32mm [#30-#28] AWG COPPER MAGNET WIRE. TWO WIRES OF THE SAME SIZE MAX PER SLOT
- ③ IDENTIFICATION NUMBER 6 FOR THE MAGNET WIRE SLOT SIZE
- ④ 0.25[.010] MAX CARRIER CUT-OFF TABS
- ⑤ PRELIMINARY - NOT FOR PRODUCTION.



082 PRE-MILLED BRASS	⑤ 63737-2
4M PRE-MILLED BRASS	63737-1
MATERIAL	PART NO

DO NOT SCALE PRINT. UNLESS SPECIFIED DIMENSIONS IN mm [INCHES] TOLERANCES ON : 2 PLC DEC ± 0.13 [.005] 3 PLC DEC ± - ANGLES ± -	DR 9-27-93 L.A.MAYER	AMP Incorporated Harrisburg, PA 17105-3608	
	CHK 9-27-93 M.S. FEHER		
MATERIAL	APPD 9-27-93 A.HUNT III	TAB, 4.75 [.187] FASTON, <sup>TM</sup> MAG-MATE <sup>TM</sup> Slim Line	
SEE TABLE	APPD 9-27-93 T.L.SHUTTER		
FINISH	PRODUCT SPEC	CAGE CODE	DRAWING NO
0.002032 [.000080] MIN TIN PLATE	108-1484	③ 00779	③=63737
	APPLICATION SPEC	SCALE	SHEET
	114-2140	10:1	1 OF 1
	WEIGHT		
	-		

THIS DRAWING IS A CONTROLLED DOCUMENT FOR AMP INCORPORATED. IT IS SUBJECT TO CHANGE AND THE CONTROLLING ENGINEERING ORGANIZATION SHOULD BE CONTACTED FOR THE LATEST REVISION.