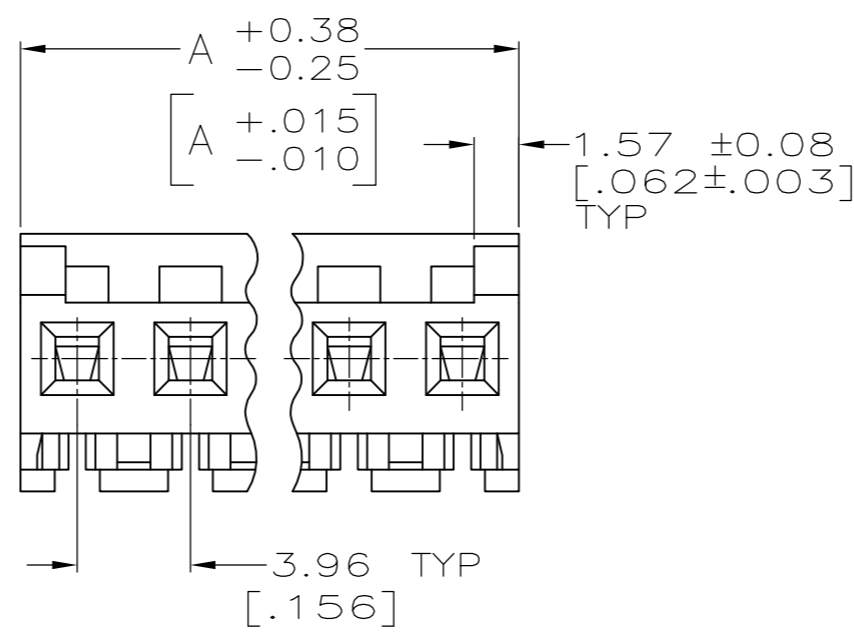
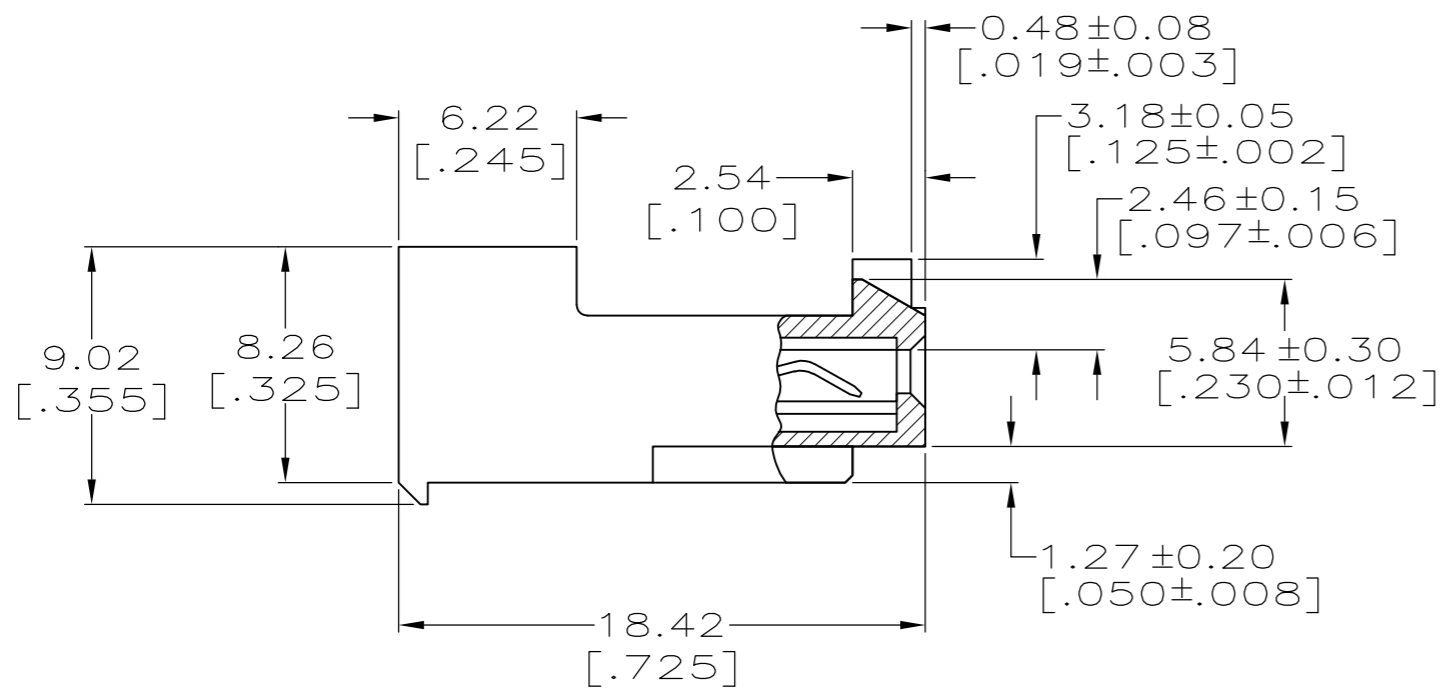
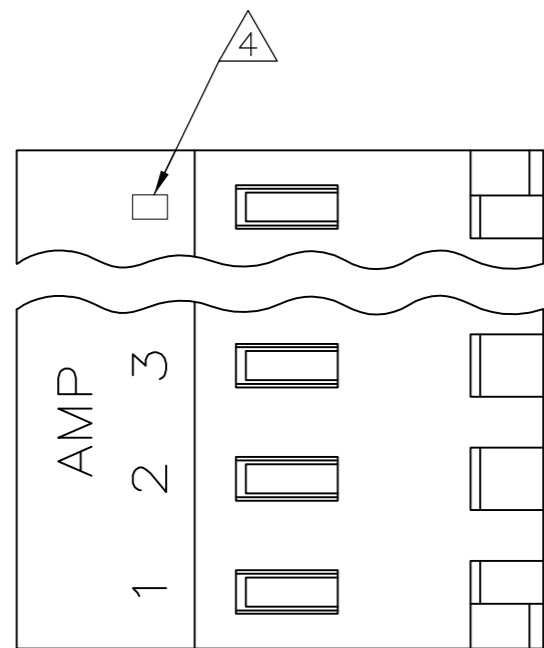


THIS DRAWING IS UNPUBLISHED. RELEASED FOR PUBLICATION
 © COPYRIGHT - By - ALL RIGHTS RESERVED.

LOC	DIST	REVISIONS			
P	LTR	DESCRIPTION	DATE	DWN	APVD
CM	00	K1	REVISED PER ECO-11-015731	03AUG11	HMR SM



- ① MATERIAL: CONNECTOR - NYLON UL94V-2 (ORANGE).
 CONTACTS - 0.00076[.000030] GOLD THK OR 0.00008[.000003] MIN THK GOLD FLASH OVER 0.00068[.000027] THK PALLADIUM NICKEL, PER TE CONNECTIVITY'S DISCRETION. IN CONTACT AREA WITH BRIGHT TIN-LEAD FOR -2 THRU -28, MATTE WHISKER MITIGATED TIN FOR 3-644460-2 THRU 4-644460-8 OVER NICKEL UNDERPLATE.

- 2. CONTACTS ACCEPT 18 AWG WIRE WITH 2.41[.095] MAX INSULATION DIAMETER.
- 3. CONTACTS MUST ACCEPT 1.14±0.03[.045±.001] POST AND REMAIN LOCKED IN POSITION.

④ IDENTIFICATION NUMBER FOR LAST CIRCUIT MAY NOT APPEAR ON ALL ASSEMBLIES.

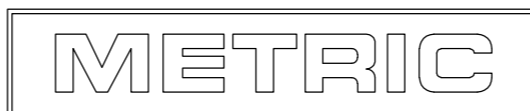
5. DIMENSIONS IN BRACKETS ARE IN INCHES.

6. HOUSING FEATURES ARE: CLOSED END WITH LOCKING RAMP AND POLARIZING TAB.

⑦ OBSOLETE PARTS: OBSOLETE CIS STREAMLINING PER D.RENAUD/D.SINISI

DESCRIPTION	DATE	DWN	APVD
YES	71.32[2.808]	18	4-644460-8
YES	67.36[2.652]	17	4-644460-7
YES	63.40[2.496]	16	4-644460-6
YES	59.44[2.340]	15	4-644460-5
YES	55.47[2.184]	14	4-644460-4
YES	51.51[2.028]	13	4-644460-3
YES	47.55[1.872]	12	4-644460-2
YES	43.59[1.716]	11	4-644460-1
YES	39.62[1.560]	10	4-644460-0
YES	35.66[1.404]	9	3-644460-9
YES	31.70[1.248]	8	3-644460-8
YES	27.74[1.092]	7	3-644460-7
YES	23.77[.936]	6	3-644460-6
YES	19.81[.780]	5	3-644460-5
YES	15.85[.624]	4	3-644460-4
YES	11.89[.468]	3	3-644460-3
YES	7.92[.312]	2	3-644460-2
NO	71.32[2.808]	18	1-644460-8
NO	63.40[2.496]	16	1-644460-6
NO	59.44[2.340]	15	1-644460-5
NO	47.55[1.872]	12	1-644460-2
NO	43.59[1.716]	11	1-644460-1
NO	39.62[1.560]	10	1-644460-0
NO	35.66[1.404]	9	644460-9
NO	31.70[1.248]	8	644460-8
NO	27.74[1.092]	7	644460-7
NO	23.77[.936]	6	644460-6
NO	19.81[.780]	5	644460-5
NO	15.85[.624]	4	644460-4
NO	11.89[.468]	3	644460-3
NO	7.92[.312]	2	644460-2
LEADFREE	DIM A	NO. OF CIRCUITS	PART NO.

⚠ SUPERSEDED BY 4-644460-6



THIS DRAWING IS A CONTROLLED DOCUMENT.		DWN K. WHITAKER 15MAR2004		
DIMENSIONS: mm [INCHES]		CHK D. BOSSI 15-MAR-04		
TOLERANCES UNLESS OTHERWISE SPECIFIED:		APVD D. BOSSI 15-MAR-04	NAME	
0 PLC ± -		PRODUCT SPEC	MTA-156 CONNECTOR ASSEMBLY, 18 AWG, STANDARD	
1 PLC ± -		APPLICATION SPEC	SIZE	CAGE CODE
2 PLC ± 0.13 [.005]		114-1020	A2	00779
3 PLC ± -		WEIGHT	DRAWING NO	RESTRICTED TO
4 PLC ± -		-	C=644460	-
ANGLES ± 0°30'		CUSTOMER DRAWING	SCALE	SHEET
MATERIAL		1	4:1	1 OF 1
FINISH		1	REV	K1