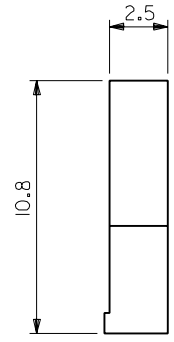
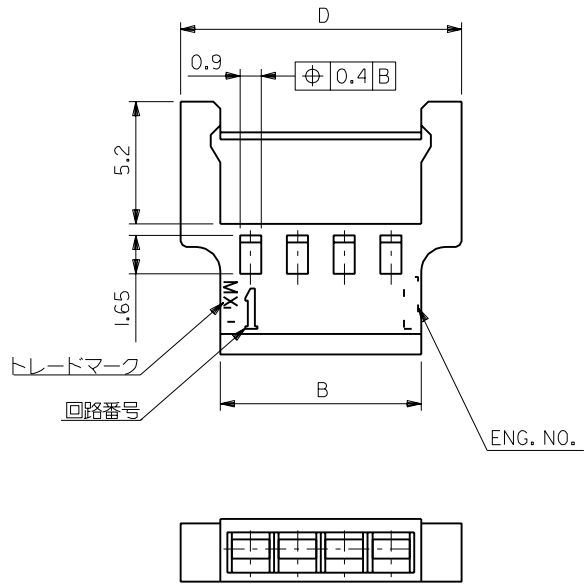
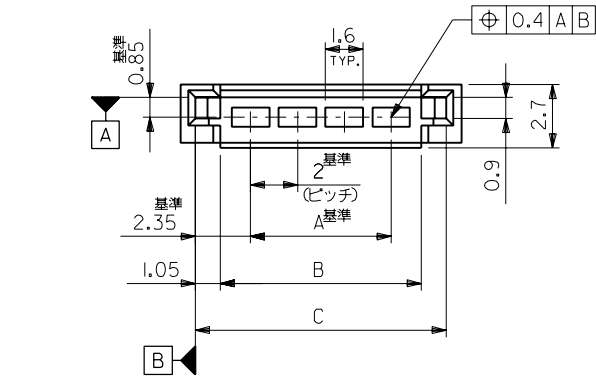


ENG. NO.
SD-51006-***00

EDP NO.

MM DIMENSIONS IN METRIC DO NOT SCALE DRAWING



注記

- 1. 嵌合相手: 51005
- 2. 適合ターミナル: 50012

30	28.7	26.6	24	51006-1300	13
26	24.7	22.6	20	↑ -1100	11
24	22.7	20.6	18	-1000	10
22	20.7	18.6	16	-0900	9
20	18.7	16.6	14	-0800	8
18	16.7	14.6	12	-0700	7
16	14.7	12.6	10	-0600	6
14	12.7	10.6	8	-0500	5
12	10.7	8.6	6	-0400	4
10	8.7	6.6	4	↓ -0300	3
8	6.7	4.6	2	51006-0200	2
D	C	B	A	ENG. NO.	極数

角度 ANGLE		±3°							材料 MATERIAL	PBTP (UL94V-0)		molex MOLEX-JAPAN CO.,LTD. 日本モレックス株式会社	
30以上 OVER		+0.3							仕上げ FINISH	— —			EDP. NO.
10以上 30未満 UNDER		+0.25	C	変更&再作図 (J90683)	SJM	H.H	'89/8/22		適用電線範囲 WIRE RANGE	— —		ENG. NO.	
10未満 UNDER		+0.2	記号 LTR	変更内容 REVISION RECORD	DR. CHK.	日付 DATE			被覆外径 INS. RANGE	— —		REV	
一般公差 GENERAL TOLERANCES			REVISE ONLY ON CAD SYSTEM							DRAWN BY '89/8/22	CHK'D BY '90/05/16		TITLE 名称 2.0 WIRE TO WIRE CONN. PLUG HOUSING
									S.MOCHIZUKI H.H	M.ENOMOTO		C	
									APP'D BY '90/05/16	尺 度 SCALE 5-1			

THIS DRAWING CONTAINS INFORMATION THAT IS PROPRIETARY TO MOLEX(JAPAN) AND SHOULD NOT BE USED WITHOUT WRITTEN PERMISSION
本図面は日本モレックス(株)の所有する情報を含むもので 当社の許可なく複製を禁止する。

MXJ-8

Datasheet

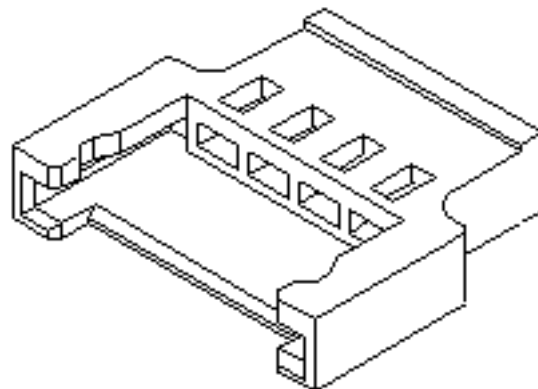
Crimp Housings

2.00mm (.079") Pitch Wire-to-Wire Plug Housing 51006

[[Home](#) > [Products](#) > [Crimp Housings](#) > [Datasheet](#)]

[Help](#)

Status	Active
Gender	Male
Wire Entry Angle	Vertical
Circuits / Positions	2, 3, 4, 5, 6, 7, 8, 9, 10
Pitch / Center Spacing	2.00mm (.079")
Rows	1
Unmated Height	10.80mm (.425")
Unmated Width	2.70mm (.106")
Mates With	51005
Use With	50012
Designed In	Millimeters
Temperature Range	-40°C to +105°C
Contact Insertion Force-max. (per circuit)	14.7N (3.30 lb)
Contact Retention Force-min. (per circuit)	9.8N (2.20 lb)
Panel Mount	No
Packaging	Bag
Housing Material	PBT Polyester
Color	Natural
Flammability	UL 94V-0
Stackable	No
Product Specification	PS-51005-001
UL File No.	E29179
CSA File No.	LR19980
MX01 Catalog Page	B-45
Molex Series	51006



Features and Benefits

- Sizes 2 to 10 circuits
- Very thin design provides space savings