

521206-1 ✓ ACTIVE

RAST | RAST 5 IDC Connectors

TE Internal #: 521206-1

Housing, Receptacle, Wire-to-Wire, 4 Position, 5 mm [.197 in]

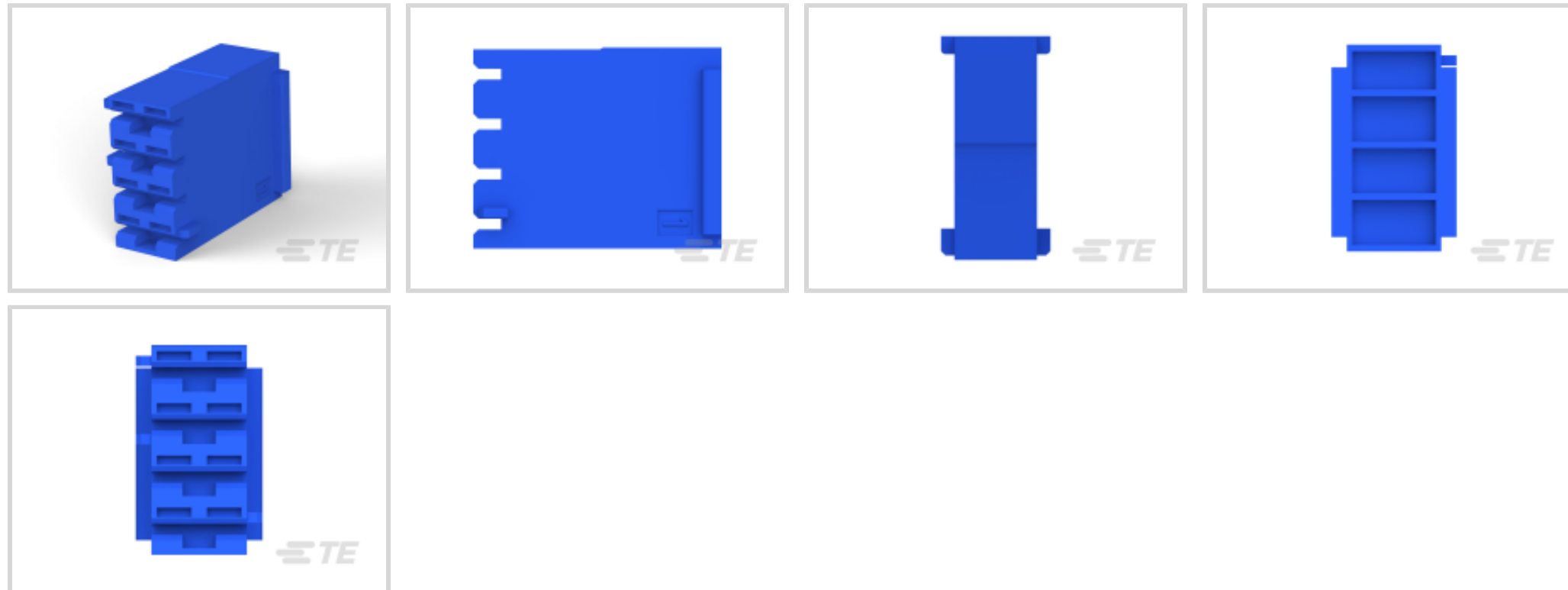
Centerline, Crimp, 1 Row, Blue, Mating Retention, Wire & Cable,

RAST 5 IDC Connectors

[View on TE.com >](#)



Connectors > PCB Connectors > Wire-to-Board Connectors > Wire-to-Board Connector Assemblies & Housings



Connector Product Type: **Housing**

Connector & Housing Type: **Receptacle**

Connector System: **Wire-to-Wire**

Number of Positions: **4**

Centerline (Pitch): **5 mm [.197 in]**

## Features

### Product Type Features

Connector Product Type	Housing
Connector & Housing Type	Receptacle
Connector System	Wire-to-Wire
Sealable	No
Connector & Contact Terminates To	Wire & Cable

### Configuration Features

Keying & Polarized Position Locations	3C, 4D
Number of Positions	4
Number of Rows	1

### Contact Features

Contact Layout	Inline
Contact Type	Socket
Contact Base Material	Brass

### Termination Features



Termination Method to Wire & Cable	Crimp
------------------------------------	-------

### Mechanical Attachment

Strain Relief	Without
---------------	---------

Panel Mount Feature	Without
---------------------	---------

PCB Mount Retention	Without
---------------------	---------

Mating Retention Type	Latch
-----------------------	-------

Mating Retention	With
------------------	------

Connector Mounting Type	Cable Mount (Free-Hanging)
-------------------------	----------------------------

### Housing Features

Housing Entry Configuration	Both Ends Closed
-----------------------------	------------------

Housing Material	Nylon 66/6
------------------	------------

Centerline (Pitch)	5 mm [.197 in]
--------------------	----------------

Housing Color	Blue
---------------	------

### Dimensions

Connector Length	9.2 mm [.362 in]
------------------	------------------

Connector Height	12.2 mm [.48 in]
------------------	------------------

Row-to-Row Spacing	5 mm [.197 in]
--------------------	----------------

### Usage Conditions

Operating Temperature Range	-40 – 110 °C [-40 – 230 °F]
-----------------------------	-----------------------------

### Operation/Application

Circuit Application	Power & Signal
---------------------	----------------

### Industry Standards

Glow Wire Rating	Standard Part - Not Glow Wire
------------------	-------------------------------

UL Flammability Rating	UL 94V-0
------------------------	----------

### Packaging Features

Packaging Quantity	1
--------------------	---

Packaging Method	Package
------------------	---------

### Product Compliance

For compliance documentation, visit the product page on [TE.com](https://www.te.com)>

EU RoHS Directive 2011/65/EU	Compliant
------------------------------	-----------

EU ELV Directive 2000/53/EC

Compliant

China RoHS 2 Directive MIIT Order No 32, 2016

No Restricted Materials Above Threshold

EU REACH Regulation (EC) No. 1907/2006

Current ECHA Candidate List: JUNE 2022 (224)

Candidate List Declared Against: JAN 2021 (211)

SVHC > Threshold:  
Not Yet Reviewed

Halogen Content

Low Halogen - Br, Cl, F, I &lt; 900 ppm per homogenous material. Also BFR/CFR/PVC Free

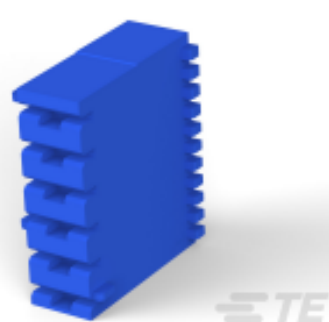
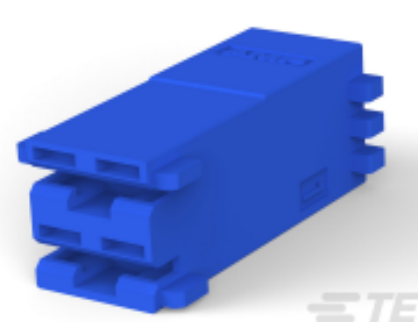
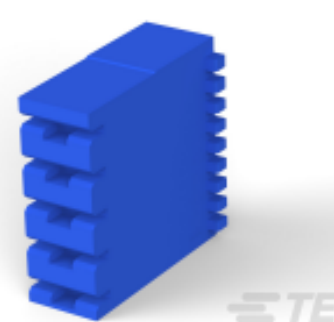
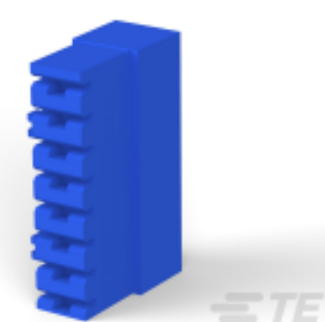
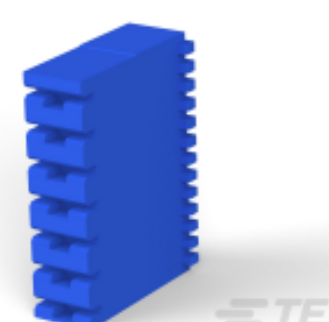
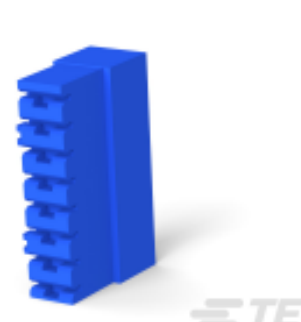
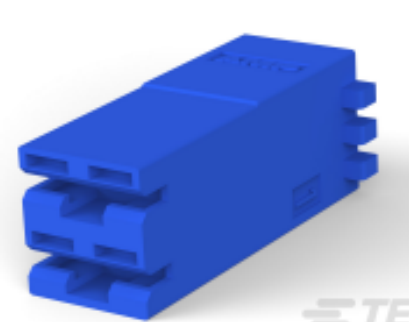
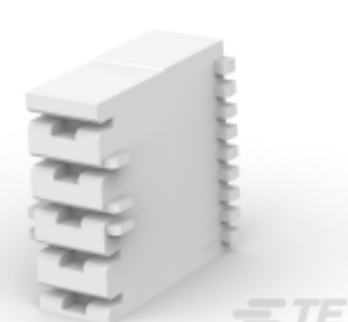
Solder Process Capability

Not applicable for solder process capability

## Product Compliance Disclaimer

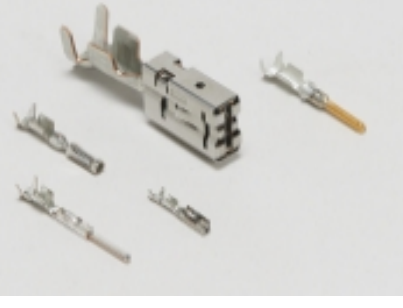

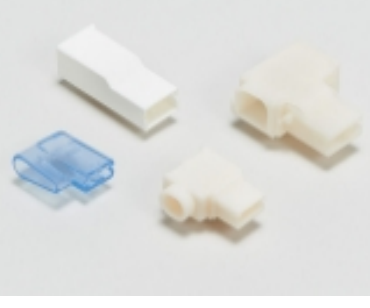

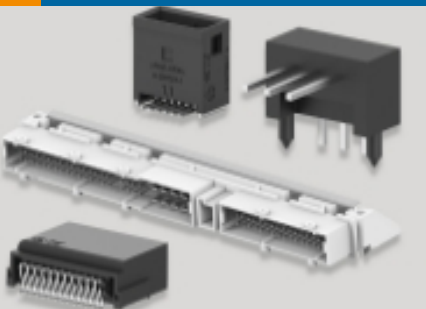

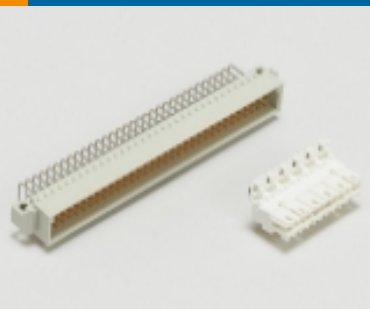
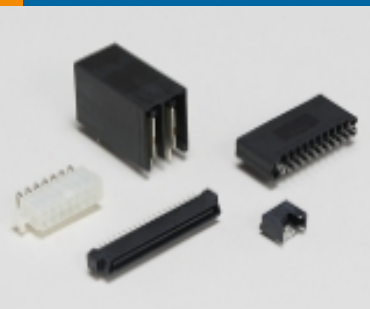
This information is provided based on reasonable inquiry of our suppliers and represents our current actual knowledge based on the information they provided. This information is subject to change. The part numbers that TE has identified as EU RoHS compliant have a maximum concentration of 0.1% by weight in homogenous materials for lead, hexavalent chromium, mercury, PBB, PBDE, DBP, BBP, DEHP, DIBP, and 0.01% for cadmium, or qualify for an exemption to these limits as defined in the Annexes of Directive 2011/65/EU (RoHS2). Finished electrical and electronic equipment products will be CE marked as required by Directive 2011/65/EU. Components may not be CE marked. Additionally, the part numbers that TE has identified as EU ELV compliant have a maximum concentration of 0.1% by weight in homogenous materials for lead, hexavalent chromium, and mercury, and 0.01% for cadmium, or qualify for an exemption to these limits as defined in the Annexes of Directive 2000/53/EC (ELV). Regarding the REACH Regulation, the information TE provides on SVHC in articles for this part number is based on the latest European Chemicals Agency (ECHA) 'Guidance on requirements for substances in articles' posted at this URL: <https://echa.europa.eu/guidance-documents/guidance-on-reach>

## Compatible Parts

TE Part # 521208-1  
POSI-LOK HSG.250-6 POS RAST5TE Part # 521204-1  
POSI-LOK HSG.250-2 POS RAST5TE Part # 521207-1  
POSI-LOK HSG.250-5 POS RAST5TE Part # 521210-1  
POSI-LOK HSG.250-8 POS RAST5TE Part # 521209-1  
POSI-LOK HSG.250-7 POS RAST5TE Part # 521210-5  
HSG,RAST 5,POSI LOCK MKIII,8PTE Part # 521204-5  
HSG,POS LOC,MARKIII,250 SRS,2PTE Part # 521207-4  
HSG,RAST 5,POSI LOCK MKIII,5P

 <p>TE Part # 521204-2 HSG RCPT POSI MK 111 250 2POS</p>	 <p>TE Part # 521207-3 HSG POSI-LOCK MARK III</p>	 <p>TE Part # 1969371-2 HSG, RAST 5 POSITIVE LOCK, 4P 2C</p>	 <p>TE Part # 5-1969536-2 GWHSG,RECP,POSILOK MKIII , 250SER,3P 2CIR</p>
 <p>TE Part # 5-1969536-5 GWHSG,RECP,POSILOK MKIII , 250SER,3P 2CIR</p>	 <p>TE Part # 521204-3 HSG,2P,POS LOCK,MKIII,250 SERI</p>	 <p>TE Part # 521204-7 RAST 5,HSG,2P,POSILOCK MKIII</p>	 <p>TE Part # 521204-8 RAST 5,HSG,2P,POSILOCK MKIII</p>
 <p>TE Part # 521205-9 RAST 5 HSG,3P</p>	 <p>TE Part # 521206-3 HSG,4P,POS LOCK,MKIII,250 SERI</p>	 <p>TE Part # 521206-6 POSI-LOK HSG.250-4 POS RAST5</p>	 <p>TE Part # 521208-4 HSG,250 POSI-LOCK,MKIII,6 POS,</p>

Also in the Series | RAST 5 IDC Connectors

 <p>Automotive Terminals(8)</p>	 <p>Connector Contacts(12)</p>	 <p>Crimp Terminal Housings(41)</p>	 <p>Insertion &amp; Extraction Tools(1)</p>
 <p>PCB Headers &amp; Receptacles(424)</p>	 <p>Rectangular Connector Housings(1)</p>	 <p>Standard Edge Connectors(47)</p>	 <p>Standard Rectangular Connectors(112)</p>

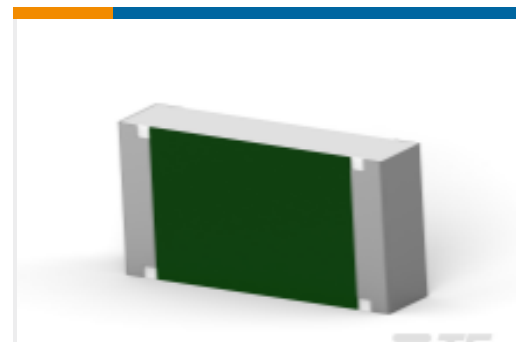
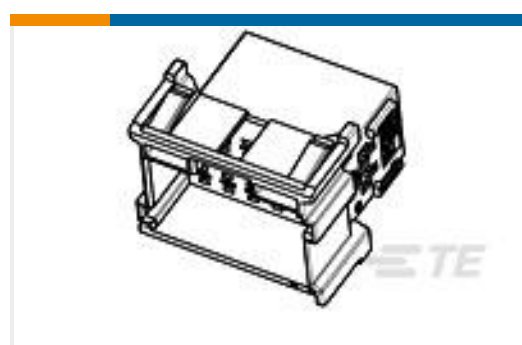
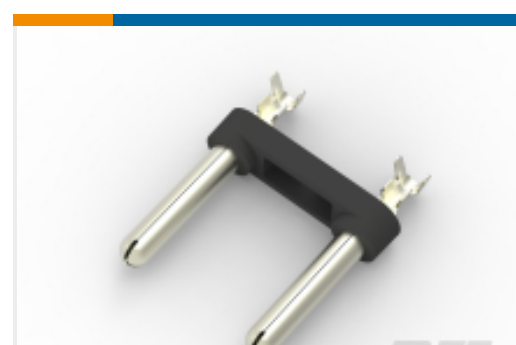


Wire-to-Board Connector Assemblies &amp; Housings(213)



Wire-to-Board Connector Contacts(2)

## Customers Also Bought

TE Part #1217094-2  
RCPT 250 POS-LOCK 18-14 TPBRTE Part #1217095-1  
RCPT 250 POS-LOCK 16-12 0126BRTE Part #7-2176397-8  
3502 1K6 1%TE Part #2-917657-2  
DYNAMIC D-3200 HDR ASSY 10PTE Part #1-965641-4  
FLACHSTE-GEH2,8 6PTE Part #40696  
RING TERMINAL 12-10 AWG TPBRTE Part #2819037-1  
WALL PLUG 2 POS. ASSYTE Part #2133857-5  
250 FASTON HSG., FLAG, REC., 1 POS,  
BLACK

## Documents

### CAD Files

#### 3D PDF

3D

#### Customer View Model

[ENG\\_CVM\\_CVM\\_521206-1\\_R.2d\\_dxf.zip](#)

English

#### Customer View Model

[ENG\\_CVM\\_CVM\\_521206-1\\_R.3d\\_igs.zip](#)

English

#### Customer View Model

[ENG\\_CVM\\_CVM\\_521206-1\\_R.3d\\_stp.zip](#)

English

By downloading the CAD file I accept and agree to the [Terms and Conditions](#) of use.

### Datasheets & Catalog Pages

[1654742\\_HOUSEHOLD\\_APPLIANCES\\_RAST5](#)

English



---

## Product Specifications

### Product Specification

English

---

## Product Environmental Compliance

### MD\_521206-1\_06072018125\_dmtec

English

### MD\_521206-1\_06072018125\_dmtec

English