

52924 ✓ ACTIVE



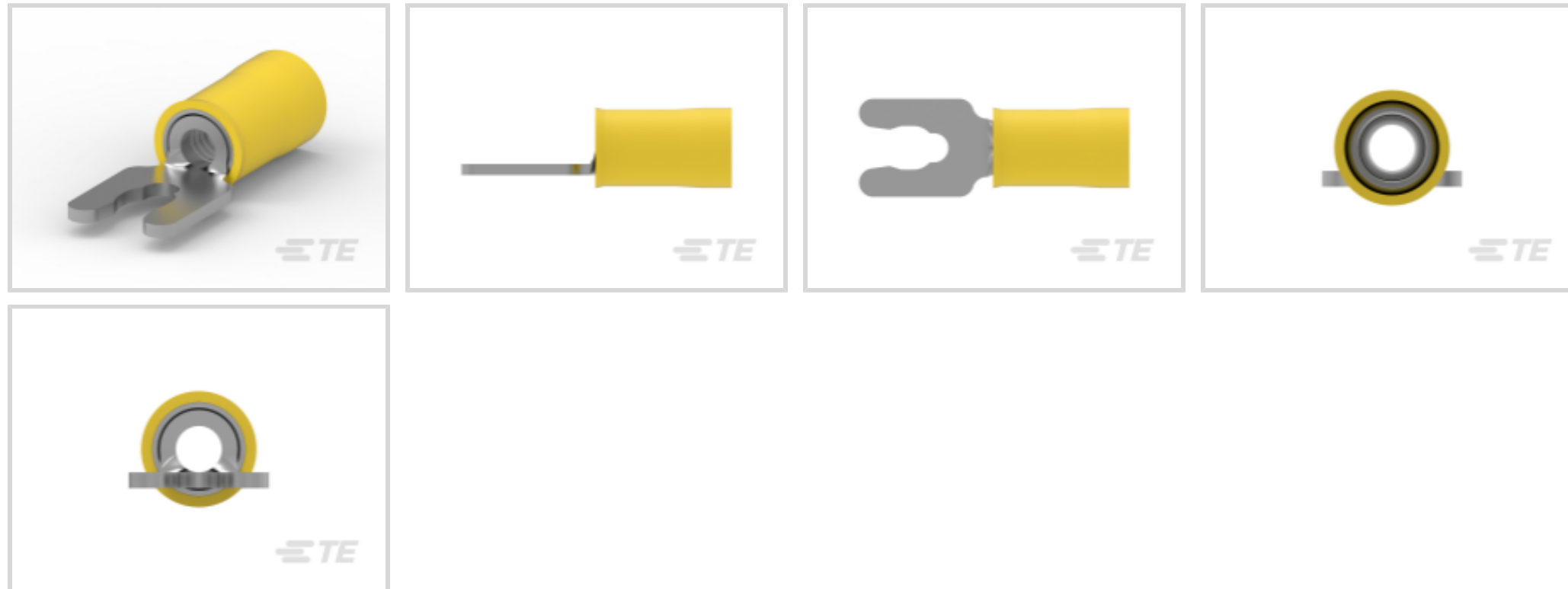
PIDG

TE Internal #: 52924

Ring Terminals & Spade Terminals, Spring Spade, 26 – 22 AWG
Wire Size, .12 – .4 mm² Wire Size, 202 – 810 CMA Wire Size, Stud
Size M3.5 / #6, PIDG

[View on TE.com >](#)

Terminals & Splices > Ring Terminals & Spade Terminals > PIDG SHORT SPRING SPADE TONGUE TERMLS



Ring & Spade Terminal Type: **Spring Spade**

Wire Size: **202 – 810 CMA**

Stud Size: **#6, M3.5**

[All PIDG Short Spring Spade Tongue Termls \(39\)](#)

Features

Product Type Features

Shape Description	SPADE-028
Stud Size	#6, M3.5
Sealable	No
Wire Insulation Support Retention Type	Insulation Support

Configuration Features

Terminal Angle	180 °
----------------	-------

Electrical Characteristics

Voltage (Max)	300 V
---------------	-------

Body Features

Inspection Slot	No
Insulation Sleeve Color	Yellow
Stripe Color	Yellow

Contact Features

--	--



Ring & Spade Terminal Type	Spring Spade
Barrel Type	Closed
Terminal Orientation	Straight
Terminal Plating Material	Tin

Mechanical Attachment

Wire Insulation Support	With
-------------------------	------

Dimensions

Wire Size	202 – 810 CMA
Stud Diameter	3.51 mm[.138 in]
Tongue Thickness	.5 mm[.02 in]
Overall Product Length	17.2 mm[.679 in]
Accepts Wire Insulation Diameter (Max)	2.08 mm[.082 in]
Accepts Wire Insulation Diameter Range	1.27 – 2.08 mm[.05 – .082 in]

Usage Conditions

Insulation Option	Partially Insulated
Operating Temperature Range	105 °C[221 °F]

Operation/Application

Compatible With Wire Base Material	Copper
Compatible With Wire Plating Material	Tin
Heavy Duty	No

Industry Standards

Government Qualified	No
----------------------	----

Packaging Features

Packaging Quantity	1000
Packaging Method	Loose Piece

Product Compliance

[For compliance documentation, visit the product page on TE.com>](#)

EU RoHS Directive 2011/65/EU	Compliant
EU ELV Directive 2000/53/EC	Compliant
China RoHS 2 Directive MIIT Order No 32, 2016	No Restricted Materials Above Threshold
EU REACH Regulation (EC) No. 1907/2006	



Current ECHA Candidate List: JUNE 2022

(224)

Candidate List Declared Against: JAN 2022

(223)

SVHC > Threshold:

Not Yet Reviewed

Halogen Content

Low Halogen - Br, Cl, F, I < 900 ppm per homogenous material. Also BFR/CFR/PVC Free

Solder Process Capability

Not applicable for solder process capability

Product Compliance Disclaimer

This information is provided based on reasonable inquiry of our suppliers and represents our current actual knowledge based on the information they provided. This information is subject to change. The part numbers that TE has identified as EU RoHS compliant have a maximum concentration of 0.1% by weight in homogenous materials for lead, hexavalent chromium, mercury, PBB, PBDE, DBP, BBP, DEHP, DIBP, and 0.01% for cadmium, or qualify for an exemption to these limits as defined in the Annexes of Directive 2011/65/EU (RoHS2). Finished electrical and electronic equipment products will be CE marked as required by Directive 2011/65/EU. Components may not be CE marked. Additionally, the part numbers that TE has identified as EU ELV compliant have a maximum concentration of 0.1% by weight in homogenous materials for lead, hexavalent chromium, and mercury, and 0.01% for cadmium, or qualify for an exemption to these limits as defined in the Annexes of Directive 2000/53/EC (ELV). Regarding the REACH Regulation, the information TE provides on SVHC in articles for this part number is based on the latest European Chemicals Agency (ECHA) 'Guidance on requirements for substances in articles' posted at this URL: <https://echa.europa.eu/guidance-documents/guidance-on-reach>

Compatible Parts



REPRESENTATION ONLY

TE Part # 46121
DAHT PG PIDG 26-22 ASSY




TE Part # 59275
T-HEAD PIDG PG SH 26-20 ASSY

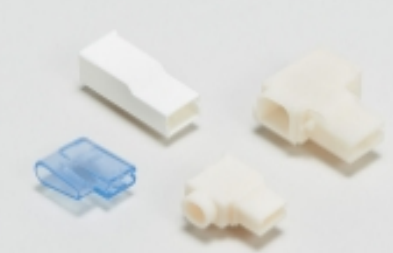


TE Part # 69344
PIDG 26-22 DIE SET

Also in the Series | PIDG




Compression Connectors(17)



Crimp Terminal Housings(1)



Crimp Wire Pins, Tabs & Ferrules(41)



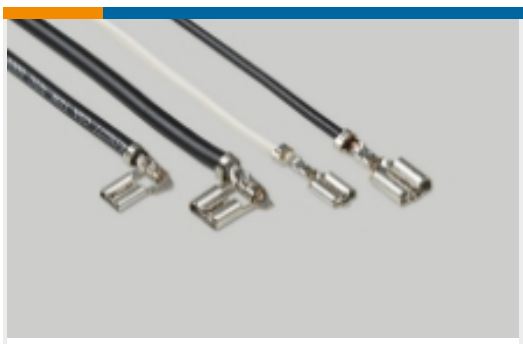
Knife Disconnects(11)



PCB Terminals(9)



Portable Crimp Tools(2)



Quick Disconnects(53)



Ring Terminals & Spade Terminals(861)



Special Purpose Terminals(1)

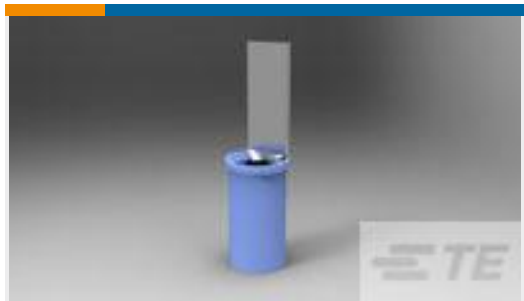


Splices(48)

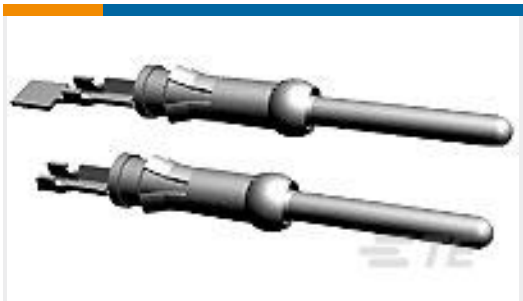
Customers Also Bought



TE Part #52943
TERMINAL,PIDG SPR SPD 12-10 10



TE Part #327748
TAB,PIDG 16-14



TE Part #66429-4
III+ PIN,30-26,30AU/FL,LP



TE Part #52922
TERMINAL,PIDG SPR SPD 26-22 4



TE Part #1-1630001-2
NHSC100 10R 5%



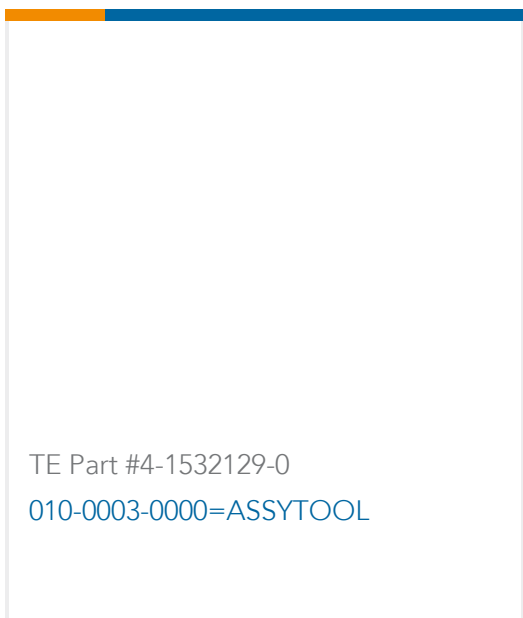
TE Part #90870-1
PROCRMP TL W/DIE COMM .062 P/S



TE Part #5499141-1
A/L UNIV HDR 10P RA LG LAT



TE Part #4-1532004-7
033-0219-0001=ADAPTERBULKHEAD



TE Part #4-1532129-0
010-0003-0000=ASSYTOOL

Documents



Product Drawings

TERMINAL,PIDG SPR SPD 26-22 6

English

CAD Files

3D PDF

3D

Customer View Model

[ENG_CVM_CVM_52924_L.2d_dxf.zip](#)

English

Customer View Model

[ENG_CVM_CVM_52924_L.3d_igs.zip](#)

English

Customer View Model

[ENG_CVM_CVM_52924_L.3d_stp.zip](#)

English

3D PDF

English

Customer View Model

[ENG_CVM_52924_F.3d_igs.zip](#)

English

Customer View Model

[ENG_CVM_52924_F.3d_stp.zip](#)

English

Customer View Model

[ENG_CVM_52924_F.2d_dxf.zip](#)

English

By downloading the CAD file I accept and agree to the [Terms and Conditions](#) of use.

Datasheets & Catalog Pages

PIDG TERMINALS & SPLICES Quick Reference Guide

English

Product Specifications

Application Specification

English

Product Environmental Compliance

MD_52924_10312017858_dmtec

English

MD_52924_10312017858_dmtec

English

Instruction Sheets

AMP* PIDG* (VINYL) & PLASTI-GRIP* SHORT SPRING SPADE TERMINALS FOR BAR

English



[Instruction Sheet \(U.S.\)](#)

English