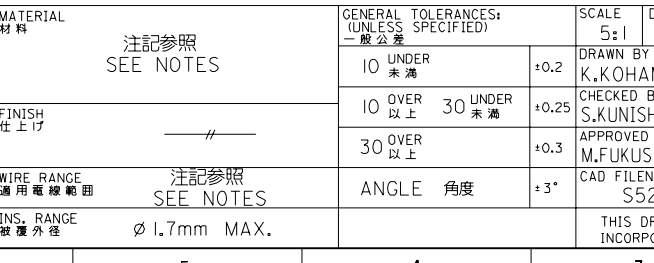
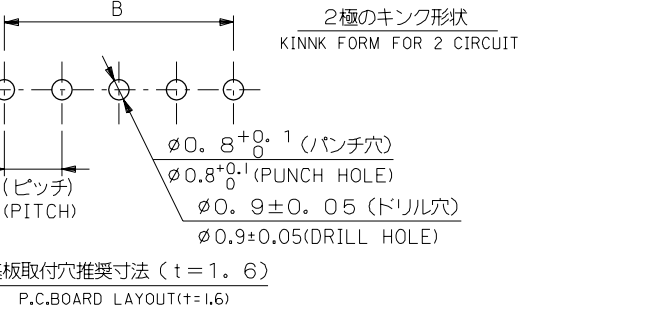
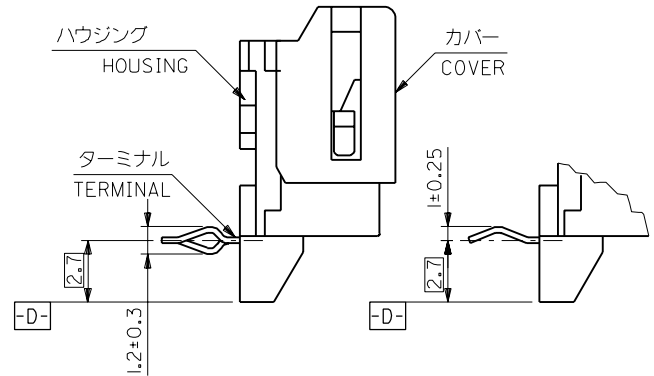
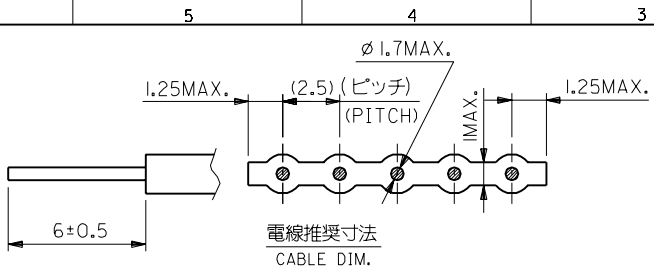
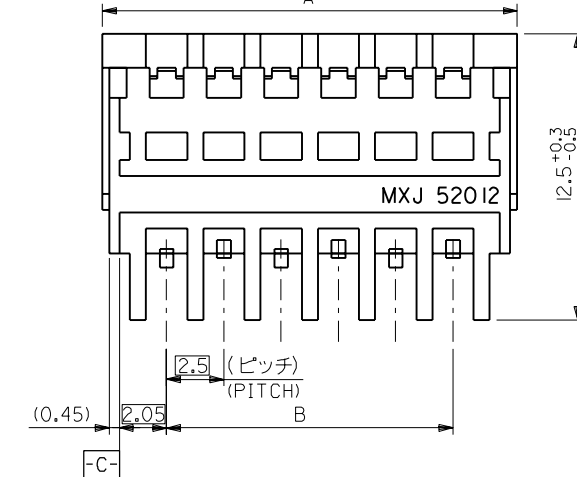
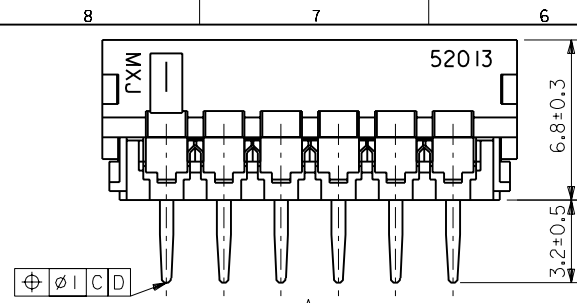


DO NOT SCALE DRAWING



- 注記) NOTES
- 材料 MATERIAL
ハウジング&カバー: PBTP
(15% & 30% GF) UL 94V-0
HOUSING & COVER: PBTP(15% & 30% GF) UL 94V-0
ターミナル: リン青銅, 錫メッキ (t=0.254)
TERMINAL: PHOS BRONZE, PRE-TIN PLATE (t=0.254)
 - 適用電線 ACCEPTS CABLE
2. 5mmピッチ リボンケーブル
2.5mm PITCH RIBBON CABLE
芯線: AWG #24~#26, 錫コート線
TOP COATED WIRE(AWG#24-#26)
 - 2極のみテール部のキンクは同一方向 (基準面 D-側が凹)
SAME DIRECTION KINK FOR ONLY 2CKT.
 - 溶剤等による本製品の洗浄は不可。
SOLVENT CLEANING MUST NOT APPLY TO THIS PRODUCTS.

27.5	33.1	52012-1210	12
25	30.6	-1110	11
22.5	28.1	-1010	10
20	25.6	-0910	9
17.5	23.1	-0810	8
15	20.6	-0710	7
12.5	18.1	-0610	6
10	15.6	-0510	5
7.5	13.1	-0410	4
5	10.6	-0310	3
2.5	8.1	52012-0210	2
B	A	MATERIAL NO.	CIRCUIT

EC NO. DRWN: CHK: APPR:	EC NO. DRWN: CHK: APPR:	EC NO. DRWN: CHK: APPR:	REVISED EC NO. JC2000-0769 DRWN: K.KOHAMA 00/4/4 CHK: S.KUNISHI 00/5/23 APPR: M.FUKUSHIMA 00/5/23	REDRAWN EC NO. JC2000-0651 DRWN: K.KOHAMA 00/4/4 CHK: S.KUNISHI 00/4/4 APPR: M.FUKUSHIMA 00/4/4	MATERIAL 材料 注記参照 SEE NOTES	GENERAL TOLERANCES: (UNLESS SPECIFIED) 一般公差	SCALE 5:1	DESIGN UNITS <input checked="" type="checkbox"/> mm <input type="checkbox"/> INCH	THIRD ANGLE PROJECTION	DIMENSIONS: <input type="checkbox"/> mm <input type="checkbox"/> INCH <input checked="" type="checkbox"/> mm ONLY	SHT REV	REVISE ON CAD ONLY
FINISH 仕上げ	WIRE RANGE 適用電線範囲	INS. RANGE 被覆外径	FINISH 仕上げ	WIRE RANGE 適用電線範囲	INS. RANGE 被覆外径	10 UNDER 未満	10 OVER 以上	30 UNDER 未満	30 OVER 以上	ANGLE 角度	APPROVED BY & DATE M.FUKUSHIMA 00/5/23	CAD FILENAME S52012.S01
						+0.2	+0.25	+0.3	+3°			

MOLEX INCORPORATED

TITLE: 2.5 WIRE TRAP
CONN. (R/A)

MATERIAL NO. 52012-**10
DRAWING NO. SD-52012-**10
SHEET NO. 1

THIS DRAWING CONTAINS INFORMATION THAT IS PROPRIETARY TO MOLEX INCORPORATED AND SHOULD NOT BE USED WITHOUT WRITTEN PERMISSION.

SIZE B



Datasheet
Ribbon Cable and Wire Trap Connectors
2.50mm (.098") Wire Trap, Push-Cover Style, Right Angle 52012



Products

Search By:

Enter Molex Part No.

52012

- [Datasheet](#)
- [Part Details and Drawings](#)
- [Request Sample](#)

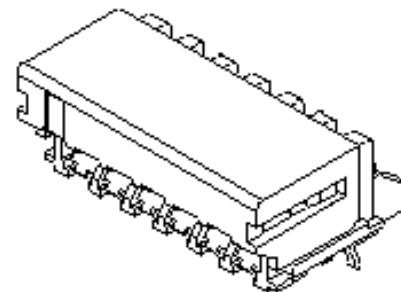
Related Documents

- [Catalog Page \(PDF\)](#)
- [Japanese Catalog Page \(PDF\)](#)
- [Product Specification \(PDF\)](#)
- [Catalog Page \(HTML\)](#)

[[Home](#) > [Products](#) > [Ribbon Cable and Wire Trap Connectors](#) > [Datasheet](#)]

[Help](#)

Status	Active
Component	Board-In
Circuits / Positions	2, 3, 4, 5, 6, 7, 8, 9, 10, 11, 12
Current-max [amps]	1.5A, 2.0A, 3.0A
Wire Size [AWG]	24, 26
Wire Type	Ribbon Cable
Termination Method	Trap
Cable/Wire Entry Angle	Right Angle
Wire Insulation Diameter-max	1.70mm (.067")
Wire Strip Length [mm (inch)]	6.00mm (.236")
Cable Pitch [mm(inches)]	2.50mm (.098")
Pitch / Center Spacing	2.50mm (.098")
PCB Mounting	Through Hole
Polarized to PCB	No
PCB Retention	PC Tail Kink
Staggered Tails	No
PCB Thickness	1.60mm (.063")
Product Name	Wire Trap
Rows	1
Contact-to-End Dimension	2.80mm (.110")
Stackable	No
Surface Mount Compatible (SMC)	No
Product Specification	*
Packaging	Tray
UL File No.	E29179
Use With	Topcoated ribbon cable
Designed In	Millimeters
Voltage-max [volts]	250V
Contact Resistance [ohms]	20 milliohms max.
Withstanding Voltage	1000V AC/1 min.



Features and Benefits

- Sizes 2 to 12 circuits
- For topcoated ribbon cable
- Wire Range: 24 to 26 AWG
- Insulation Diameter: 1.70mm max.
- Strip Length: 6.00 +/- 0.50mm (.236 +/- .020")

Insulation Resistance [ohms]	1000 Megohms min.
Contact Insertion Force- max. (per circuit)	4.9N (1.10 lb)
Contact Retention Force- min. (per circuit)	11.8N (2.65 lb)
Housing - Material	PBTP, Glass-filled
Flammability	UL 94V-0
Contact	Phosphor Bronze
Plating Contact	Tin (Sn)
Temperature Range	-40°C to +105°C
Comment	Push-Cover
MX01 Catalog Page	I-9
Molex Series	52012

[E-mail this page to a friend](#)

[© Copyright 2002 Molex Incorporated]