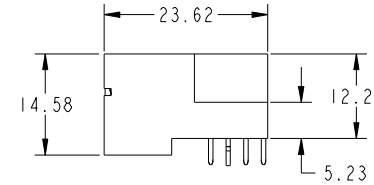
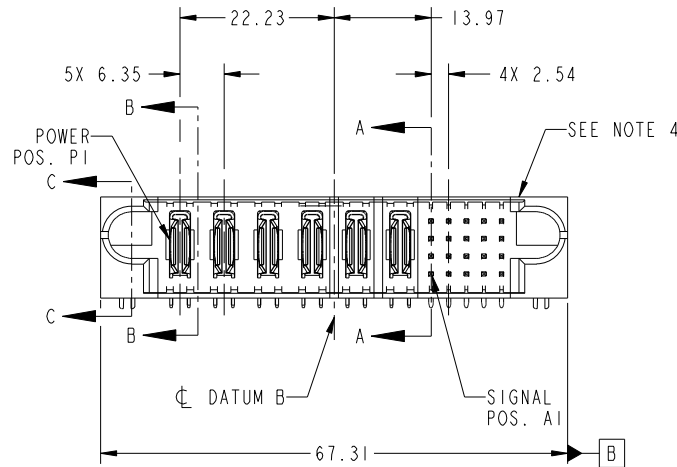


Tous droits strictement réservés. Reproduction ou communication a des tiers interdite sous quelque forme que ce soit sans autorisation écrite du propriétaire. Propriete de c FCI. Droits de reproduction FCI.



All rights strictly reserved. Reproduction or issue to third parties in any form whatever is not permitted without written authority from the proprietor. Property of FCI. Copyright FCI.

PRODUCT NO.	ROWS	POWER						SIGNAL					
		E1	P1	P2	P3	P4	P5	P6	1	2	3	4	5
51939-425 Note: (3)	D C B A	HA	PE	PE	PE	PE	PE	PE	UUUUU	TTTTT	SSSSS	RRRRR	HA



CODE	DIM "M" MATING LENGTH	CONTACT TYPE
U	[6.86]	SIGNAL
T	[6.86]	SIGNAL
S	[6.86]	SIGNAL
R	[6.86]	SIGNAL
HA	[N/A]	HOLD-DOWN
PE	[N/A]	POWER
E	[5.59]	SIGNAL

mat'l code				SEE NOTE 2		tolerances unless otherwise specified		CUSTOMER		 www.fciconnect.com	
ltr	ecn no.	dr	date	linear	0.X ± 0.5	projection		COPY		title	
A	DG09-0209	JC	01-Jul-09	angles	0.XX ± 0.25			6P + 20S		RIGHT ANGLE SOLDER HEADER	
					0.XXX ± 0.10			product family		PwrBlade	code
				dr	0° ± 2°	scale		size	dwg no	213	sheet
				enr	Jerome Chen 03/05/09	1:1		A	51939-425	1 of 4	
				chr	Jerome Chen 03/05/09						
				appd	PM Zheng 03/05/09						
					Joseph Hsia 03/05/09						
sheet index	revision sheet	A	A	A	A			cage code		22526	4
1	2	3	4								

Pro/E

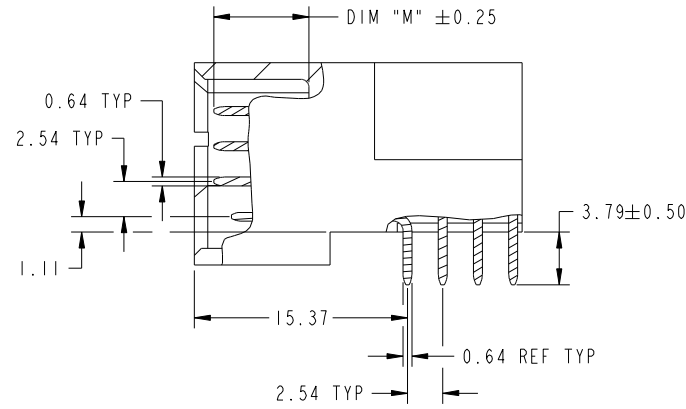
cage code 22526

Tous droits strictement reserves. Reproduction ou communication a des tiers interdite sous quelque forme que ce soit sans autorisation écrite du propriétaire. Propriete de c FCI. Droits de reproduction FCI.

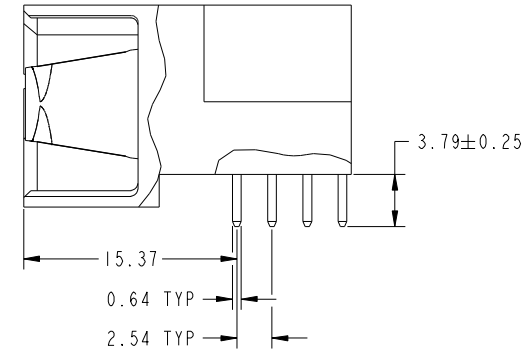
All rights strictly reserved. Reproduction or issue to third parties in any form whatever is not permitted without written authority from the proprietor. Property of FCI. Copyright FCI.



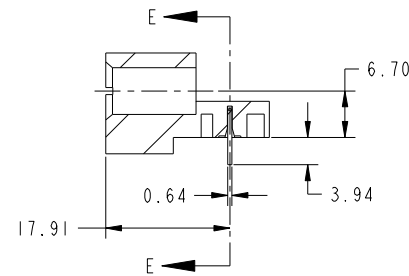
PRODUCT NUMBER
51939-425--
Note: ③



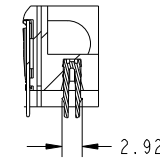
BROKEN-OUT SECTION A-A
SCALE 2:1



BROKEN-OUT SECTION B-B
SCALE 2:1



SECTION C-C



SECTION E-E

mat'l code				SEE NOTE 2		tolerances unless otherwise specified		CUSTOMER		FCI	
ltr	ecr no.	dr	date	linear	0.X ±0.5	projection	COPY		www.fciconnect.com		
A					0.XX ±0.25		title		6P + 20S		
				angles	0.XXX ±0.10		RIGHT ANGLE SOLDER HEADER				
				dr	0° ±2°	MIM		product family		PwrBlade	code
				enr	Jerome Chen 03/05/09			size		dwg no	213
				chr	Jerome Chen 03/05/09	1:1		A		51939-425	sheet
				appd	PM Zheng 03/05/09						2 of 4
sheet index		revision sheet									

cage code 22526

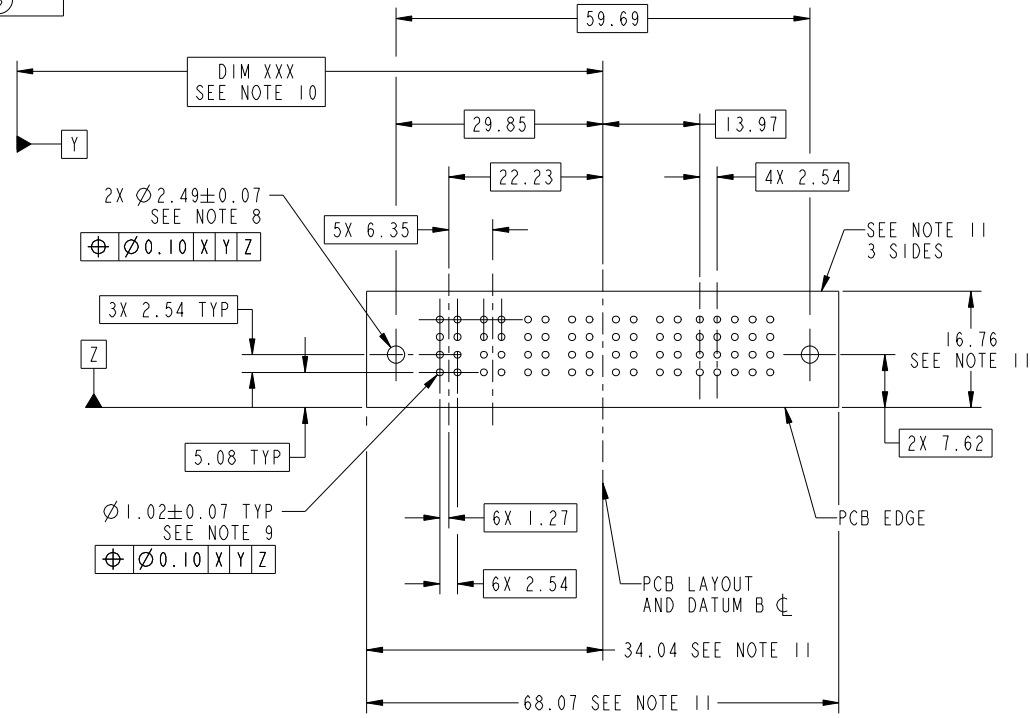
Pro/E

Tous droits strictement réservés. Reproduction ou communication a des tiers interdite sous quelque forme que ce soit sans autorisation écrite du propriétaire. Propriété de c FCI. Droits de reproduction FCI.



All rights strictly reserved. Reproduction or issue to third parties in any form whatever is not permitted without written authority from the proprietor. Property of FCI. Copyright FCI.

PRODUCT NUMBER
51939-425__
Note: (3)



RECOMMENDED PCB LAYOUT

mat'l code				SEE NOTE 2		tolerances unless otherwise specified		CUSTOMER		FCI	
ltr	ecn no.	dr	date	linear	0.X ± 0.5	COPY		www.fciconnect.com		title	
A					0.XX ± 0.25	projection		6P + 20S		RIGHT ANGLE SOLDER HEADER	
				angles	0.XXX ± 0.10	MIM		product family		PwrBlade	
				dr	0° ± 2°	scale		size		code	
				enr	Jerome Chen 03/05/09	1:1		dwg no		213	
				chr	Jerome Chen 03/05/09	A		51939-425		sheet	
				appd	PM Zheng 03/05/09			3 of 4			
					Joseph Hsia 03/05/09						
sheet index	revision sheet										

cage code 22526

Pro/E

Tous droits strictement réservés. Reproduction ou communication a des tiers interdite sous quelque forme que ce soit sans autorisation écrite du propriétaire. Propriété de c FCI. Droits de reproduction FCI.



All rights strictly reserved. Reproduction or issue to third parties in any form whatever is not permitted without written authority from the proprietor. Property of FCI. Copyright FCI.

PRODUCT NUMBER
51939-425--
Note: (3)

NOTES:

1. DIMENSIONS AND TOLERANCES ARE IN ACCORDANCE WITH ASME Y14.5M, 1994 UNLESS OTHERWISE SPECIFIED.

CONNECTOR NOTES:

- (2) HOUSING MATERIAL: UL 94 V-0 GLASS FILLED HIGH-TEMP THERMOPLASTIC
POWER CONTACT MATERIAL: COPPER ALLOY
SIGNAL PIN MATERIAL: COPPER ALLOY
 - 3. PLATING:
SEE ITEM 1 & 2 IN PRINT 10064183 FOR PLATING SPEC OF 51939-425 AND 51939-425LF RESPECTIVELY
 - (4) MANUFACTURER'S NAME, P/N, AND DATE CODE TO APPEAR ON THIS SURFACE.
 - 5. PRODUCT SPECIFICATION GS-12-149.
APPLICATION SPECIFICATION BUS-20-067.
 - 6. PACKAGED IN TRAYS.
- PCB NOTES:
- 7. ALL HOLE DIAMETERS ARE FINISHED HOLE SIZE.
 - (8) MOUNTING HOLES, WHERE APPLICABLE, ARE UNPLATED.
 - (9) $\varnothing 1.151 \pm 0.025$ DRILLED HOLES PLATED WITH 0.008 MIN SnPb OVER 0.03 TO 0.08 Cu PLATING TO ACHIEVE $\varnothing 1.02 \pm 0.07$ HOLE.
 - (10) "DIM XXX" TO BE DETERMINED BY THE CUSTOMER.
 - (11) CONNECTOR KEEP-OUT ZONE.

mat'l code				SEE NOTE 2	tolerances unless otherwise specified		CUSTOMER			
ltr	ecn no.	dr	date	linear	0.X ± 0.5	projection	COPY		www.fciconnect.com	
A					0.XX ± 0.25			title		
					0.XXX ± 0.10			6P + 20S RIGHT ANGLE SOLDER HEADER		
				angles	0° + 2°		product family		code	
				dr	Jerome Chen 03/05/09		PwrBlade		213	
				enrg	Jerome Chen 03/05/09		size	dwg no	sheet	
				chr	PM Zheng 03/05/09		scale	51939-425	4 of 4	
				appd	Joseph Hsia 03/05/09	1:1	A			
sheet index	revision sheet									

cage code 22526

Pro/E