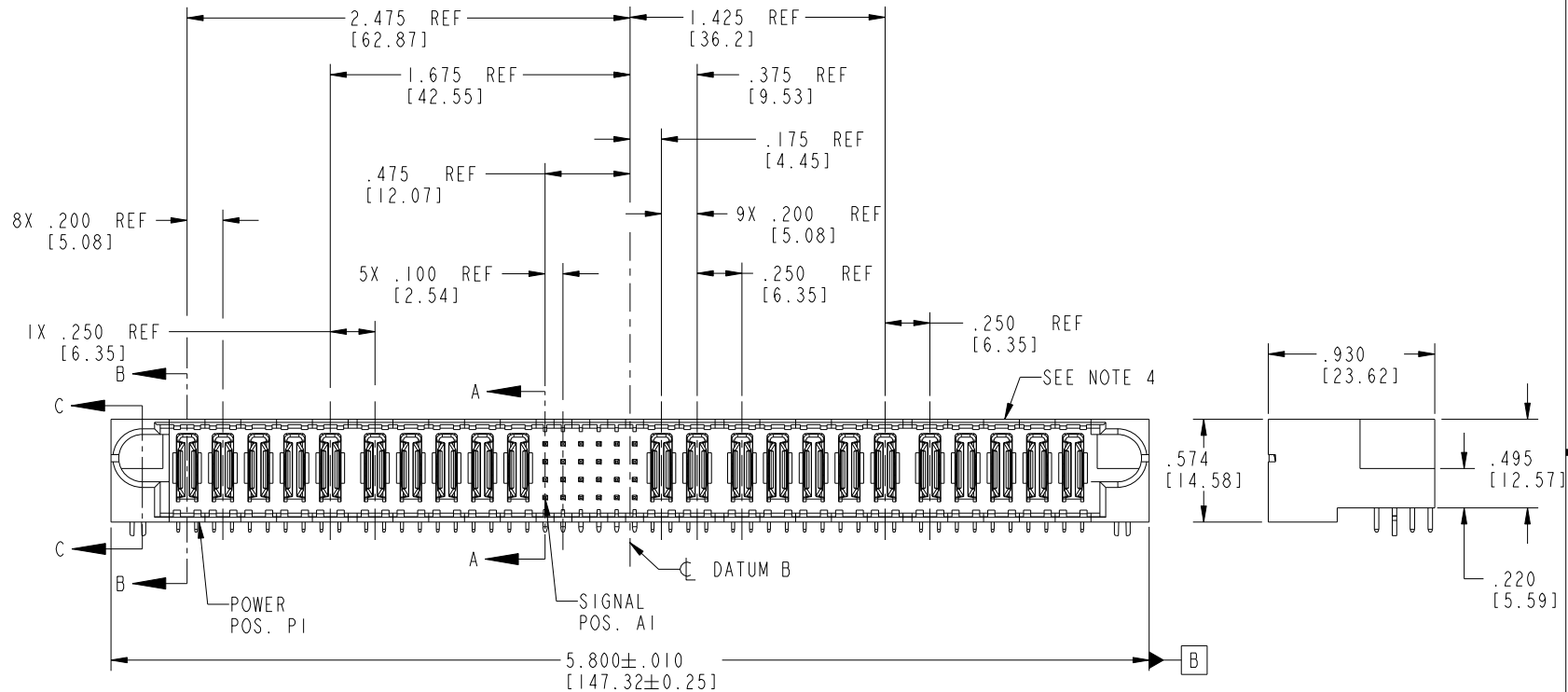


Tous droits strictement réservés. Reproduction ou communication a des tiers interdite sous quelque forme que ce soit sans autorisation écrite du propriétaire. Propriété de c FCI. Droits de reproduction FCI.

All rights strictly reserved. Reproduction or issue to third parties in any form whatever is not permitted without written authority from the proprietor. Property of FCI. Copyright FCI.



PRODUCT NO. 51856-001_- NOTE (3)	ROWS D C B A	POWER										SIGNAL						POWER						E2							
		E1	P1	P2	P3	P4	P5	P6	P7	P8	P9	P10	1	2	3	4	5	6	P11	P12	P13	P14	P15		P16	P17	P18	P19	P20	P21	P22
			PA	PA	PA	PA	PA	PA	PA	PA	PA	UUUUUU	TTTTTTTT	SSSSSS	RRRRRR	PA	PA	PA	PA	PA	PA	PA	PA	PA	PA	PA	PA	PA	PA	PA	



CODE	DIM "M" MATING LENGTH	CONTACT TYPE
E	.220 [5.59]	SIGNAL
R	.270 [6.86]	SIGNAL
S	.270 [6.86]	SIGNAL
T	.270 [6.86]	SIGNAL
U	.270 [6.86]	SIGNAL
PA	N/A [N/A]	POWER
HA	N/A [N/A]	HOLD-DOWN

mat'l code				SEE NOTE 2		tolerances unless otherwise specified		CUSTOMER		FCI	
ltr	ecn no.	dr	date	linear	.XX±.01/0.X±0.3	projection		COPY		www.fciconnect.com	
A	V02747	CGD	11-16-00		.XXY±.005/0.XX±0.13	INCH/MM		title		10P + 24S + 12P	
B	V20487	JWS	03-12-02	angles	.XXX±.0020/0.XXX±0.051	scale		product family		PwrBlade	
C	V20776	JWS	05-10-02	dr	0°±2°	1:1		size		213	
D	V04-1133	TAB	12/01/04	engr	J. SHAFFER 05-10-02	A		dwg no		51856	
E	DG05-0526	CS	12/05/05	chr	M. MOSTOLLER 05-10-02			sheet		1 of 4	
F	DG07-0498	JM	05/23/08	appd	M. MOSTOLLER 05-10-02			code		213	
G	DG08-0272	WD	09/28/08					sheet		1 of 4	
sheet index	revision sheet	G 1	G 2	G 3	G 4						

Pro/E

PDM: Rev:G

STATUS: Released

Printed: Dec 20, 2010

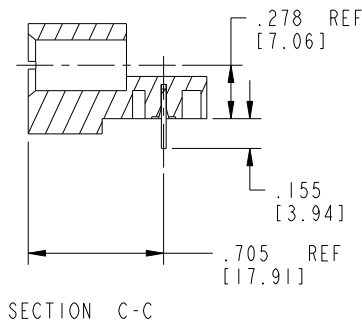
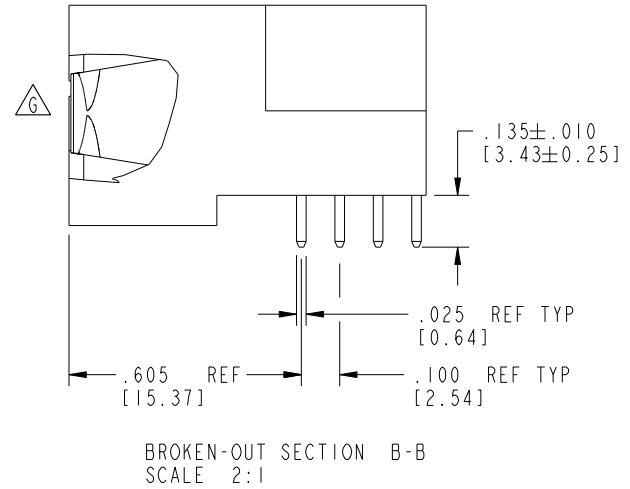
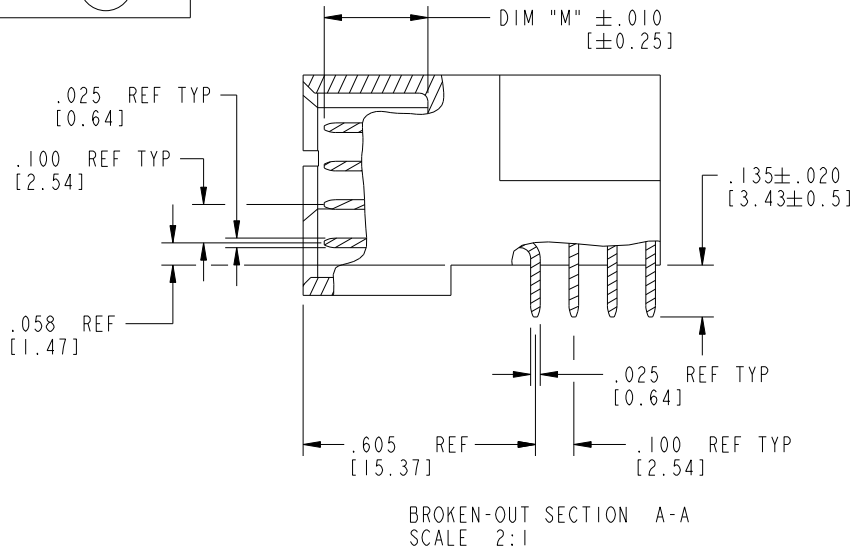
cage code 28556

Tous droits strictement réservés. Reproduction ou communication a des tiers interdite sous quelque forme que ce soit sans autorisation écrite du propriétaire. Propriete de c FCI. Droits de reproduction FCI.

All rights strictly reserved. Reproduction or issue to third parties in any form whatever is not permitted without written authority from the proprietor. Property of FCI. Copyright FCI.



PRODUCT NUMBER
51856-001__
NOTE (3)



mat'l code		SEE NOTE 2		tolerances unless otherwise specified		CUSTOMER		 www.fciconnect.com	
ltr	ecn no.	dr	date	linear	.XX±.01/0.X±0.3	COPY		title	
G					.XXY±.005/0.XX±0.13	projection		10P + 24S + 12P	
				angles	.XXX±.0020/0.XXX±0.051			RIGHT ANGLE SOLDER HEADER	
				dr	0°±2°			product family	
				engr	J. SHAFFER 05-10-02	scale		PwrBlade	
				chr	M. MOSTOLLER 05-10-02	1:1		code	
				appd	M. MOSTOLLER 05-10-02	A		213	
sheet index		revision sheet				size		sheet	
						A		2 of 4	
						51856			

Pro/E

PDM: Rev:G

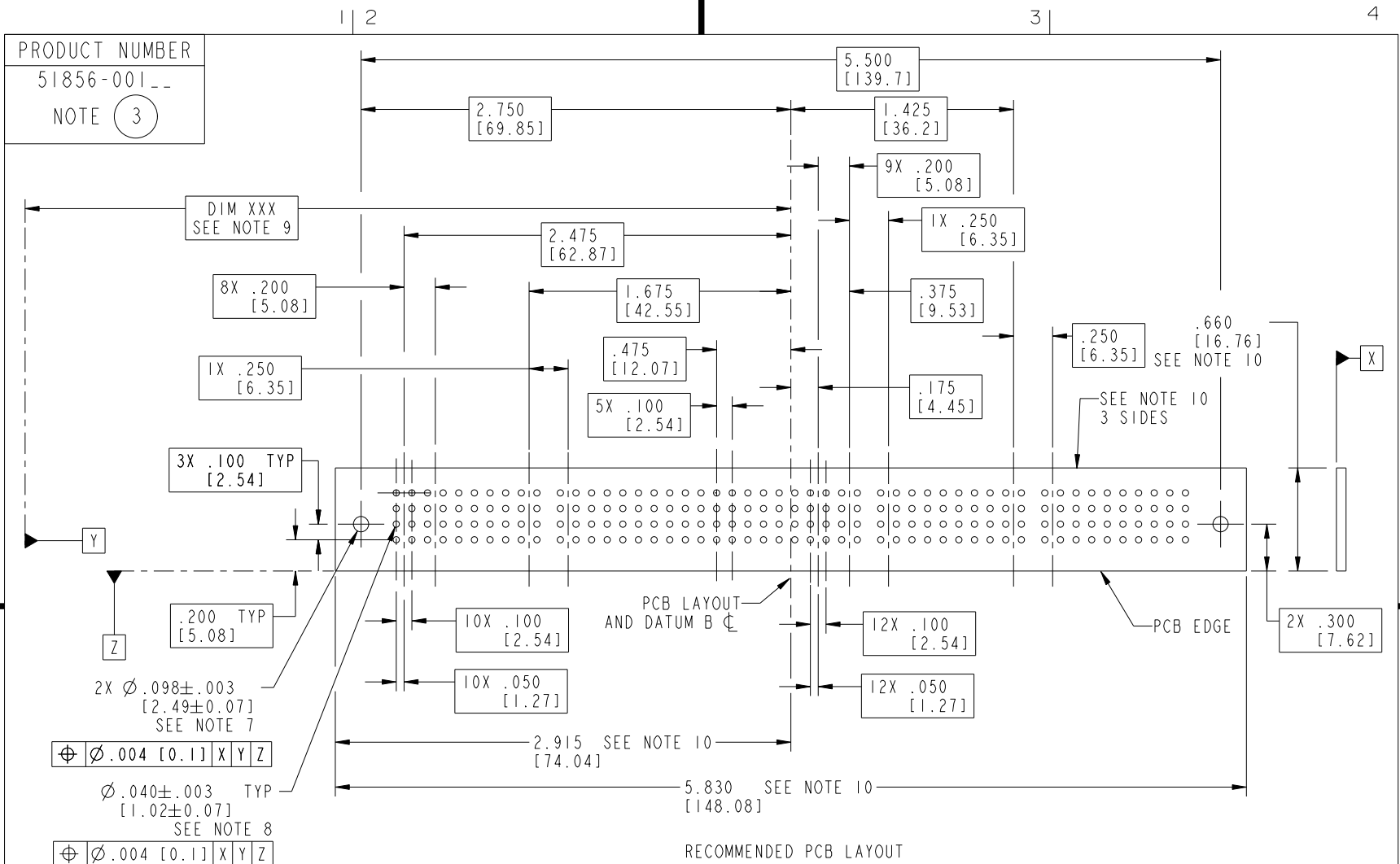
STAT: Released

Printed: Dec 20, 2010

Tous droits strictement réservés. Reproduction ou communication a des tiers interdite sous quelque forme que ce soit sans autorisation écrite du propriétaire. Propriété de c FCI. Droits de reproduction FCI.



All rights strictly reserved. Reproduction or issue to third parties in any form whatever is not permitted without written authority from the proprietor. Property of FCI. Copyright FCI.



mat'l code		SEE NOTE 2		tolerances unless otherwise specified		CUSTOMER		FCI	
lfr	ecn no.	dr	date	linear	.XX±.01/0.X±0.3	COPY		www.fciconnect.com	
G				angles	.XXY±.005/0.XX±0.13 .XXX±.0020/0.XXX±0.051	projection		title 10P + 24S + 12P RIGHT ANGLE SOLDER HEADER	
				dr	0° ± 2°	INCH/MM		product family PwrBlade code 213	
				enrg	J. SHAFFER 05-10-02	scale 1:1		size dwg no 51856 sheet 3 of 4	
				chr	M. MOSTOLLER 05-10-02				
				appd	M. MOSTOLLER 05-10-02				
sheet index	revision sheet								

cage code 22556

Pro/E

PDM: Rev:G

STATUS: Released

Printed: Dec 20, 2010

Tous droits strictement réservés. Reproduction ou communication a des tiers interdite sous quelque forme que ce soit sans autorisation écrite du propriétaire. Propriété de c FCI. Droits de reproduction FCI.



All rights strictly reserved. Reproduction or issue to third parties in any form whatever is not permitted without written authority from the proprietor. Property of FCI. Copyright FCI.

1 | 2

3

4

PRODUCT NUMBER
51856-001__

NOTE (3)

NOTES:

1. DIMENSIONS AND TOLERANCES ARE IN ACCORDANCE WITH ASME Y14.5M, 1994 UNLESS OTHERWISE SPECIFIED.

CONNECTOR NOTES:

(2) HOUSING MATERIAL: UL 94 V-0 GLASS FILLED HIGH-TEMP THERMOPLASTIC
POWER CONTACT MATERIAL: COPPER ALLOY
SIGNAL PIN MATERIAL: COPPER ALLOY

(G) 3. SEE ITEM 1 & 2 IN PRINT 10064183 FOR PLATING SPEC OF 51856-001 AND 51856-001LF RESPECTIVELY.

(4) MANUFACTURER'S NAME, P/N, AND DATE CODE TO APPEAR ON THIS SURFACE.

5. PRODUCT SPECIFICATION GS-12-149.
APPLICATION SPECIFICATION BUS-20-067.

PCB NOTES:

6. ALL HOLE DIAMETERS ARE FINISHED HOLE SIZE.
7. MOUNTING HOLES, WHERE APPLICABLE, ARE UNPLATED.

(8) $\varnothing .0453 \pm 0.0010$ [1.151 ± 0.025] DRILLED HOLES PLATED WITH
0.0003 [0.008] MIN SnPb OVER .001 [0.03]
TO .003 [0.08] Cu PLATING TO ACHIEVE
 $\varnothing .040 \pm .003$ [$1.02 \pm .07$] HOLE.

(9) "DIM XXX" TO BE DETERMINED BY THE CUSTOMER.

(10) CONNECTOR KEEP-OUT ZONE.

11. A (G) SYMBOL WILL BE NEXT TO ANY DIMENSION, VIEW, OR NOTE WHICH HAS BEEN MODIFIED WITH THE CURRENT DRAWING REVISION.

mat'l code				SEE NOTE 2		tolerances unless otherwise specified		CUSTOMER		FCI	
lfr	ecn no.	dr	date	linear	.XX±.01/0.X±0.3	projection	COPY		www.fciconnect.com		
G					.XXX±.005/0.XX±0.13		title		10P + 24S + 12P		
				angles	.XXX±.0020/0.XXX±0.051		RIGHT ANGLE SOLDER HEADER		product family PwrBlade code 213		
				dr	J. SHAFFER 05-10-02		size		A 51856		
				enrg	M. MOSTOLLER 05-10-02		dwg no		4 of 4		
				chr	M. MOSTOLLER 05-10-02		scale		1:1		
				appd	M. MOSTOLLER 05-10-02						
sheet index		revision sheet									

1 | 2

Pro/E

PDM: Rev:G

STAT: Released

Printed: Dec 20, 2010