

8 7 6 5 4 3 2 1

DWG. NO.

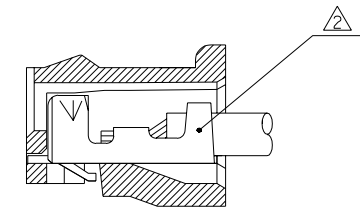
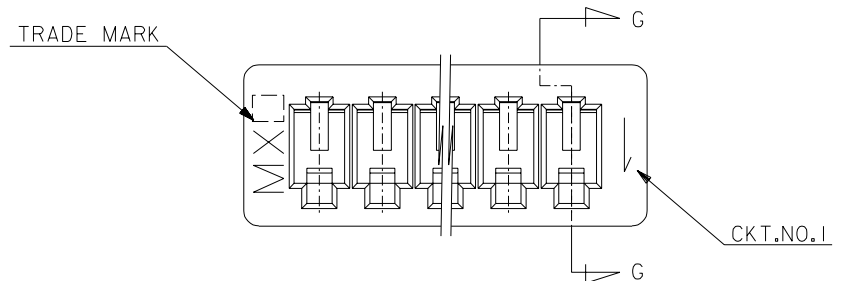
SIMILAR ITEM

PROJECT NO.

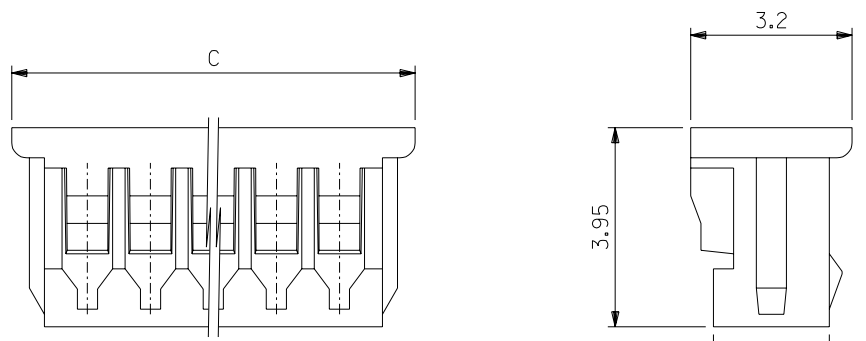
C

B

DO NOT SCALE DRAWING
DIMENSION IN METRIC

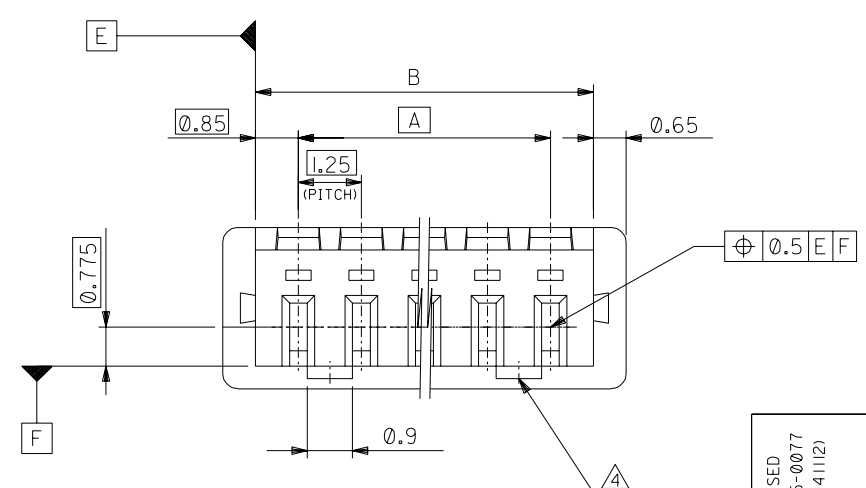


SECT. G-G



NOTES

- 1. MATERIAL : POLYBUTYLENE, UL94V-0, NON-GRASS FILLED.
- ▲ APPLICABLE TERMINAL : 50058 SERIES
- 3. MATE WITH : 53047, 53048, 53261, 53398 SERIES
- ▲ LOCKING WINDOW : ONE PLACE FOR 2 & 3 CKT. AND TWO PLACES FOR MORE THAN 3 CKT.



20.50	19.20	17.50	510211530	51021-1530	15
19.25	17.95	16.25	▲ 1430	▲ -1430	14
18.00	16.70	15.00	1330	-1330	13
16.75	15.45	13.75	1230	-1230	12
15.50	14.20	12.50	1130	-1130	11
14.25	12.95	11.25	1030	-1030	10
13.00	11.70	10.00	0930	-0930	9
11.75	10.45	8.75	0830	-0830	8
10.50	9.20	7.50	0730	-0730	7
9.25	7.95	6.25	0630	-0630	6
8.00	6.70	5.00	0530	-0530	5
6.75	5.45	3.75	0430	-0430	4
5.50	4.20	2.50	▼ 0330	▼ -0330	3
4.25	2.95	1.25	510210230	51021-0230	2
C	B	A	EDP NO.	ENG. NO.	CKTS.

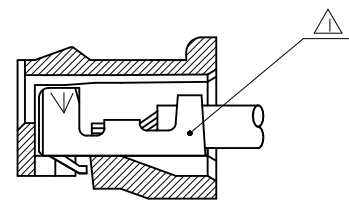
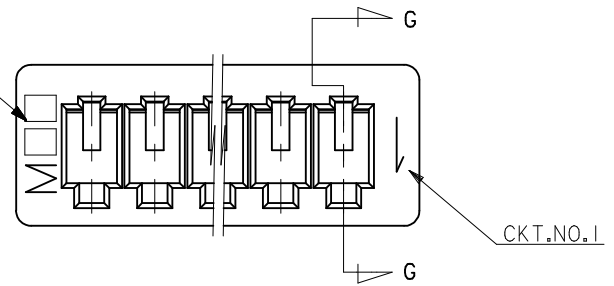
ANGLE	±3°
3Ø OVER	±0.3
1Ø OVER 3Ø UNDER	±0.25
1Ø UNDER	±0.2
GENERAL TOLERANCES	

NEW RELEASED EC NO. KOR2005-0077 DRWN: KSKIM (041112) CHK: Y.Soo.KIM APPR: CWLEE	QUALITY SYMBOLS MAJOR CRITICAL	GENERAL TOLERANCES: (UNLESS SPECIFIED)	SCALE 10 - 1	DESIGN UNITS <input checked="" type="checkbox"/> mm <input type="checkbox"/> INCH	THIRD ANGLE PROJECTION <input type="checkbox"/> mm <input type="checkbox"/> INCH <input checked="" type="checkbox"/> mm ONLY	SHT REV	REVISE ON CAD ONLY	
	DESCRIPTION MAJOR CRITICAL	mm INCH 4 PLACES ± ± 3 PLACES ± ± 2 PLACES ± ± 1 PLACE ± ±	DRAWN BY & DATE KSKIM (030806)	TITLE: 1.25 WIRE TO BOARD CONN. RECEPTACLE HOUSING				
	REV	ANGULAR: ± °	CHECKED BY & DATE Y.Soo.KIM	MOLEX INCORPORATED				
	DRAFT WHERE APPLICABLE MUST REMAIN WITHIN DIMENSIONS	THIS DRAWING CONTAINS INFORMATION THAT IS PROPRIETARY TO MOLEX INCORPORATED AND SHOULD NOT BE USED WITHOUT WRITTEN PERMISSION.	APPROVED BY & DATE CWLEE	CAD FILENAME	MATERIAL NO. SEE TABLE	DRAWING NO. SD-51021-001	SHEET NO. 1 OF 1	SIZE B

8 7 6 5 4 3 2 1

10 9 8 7 6 5 4 3 2 1

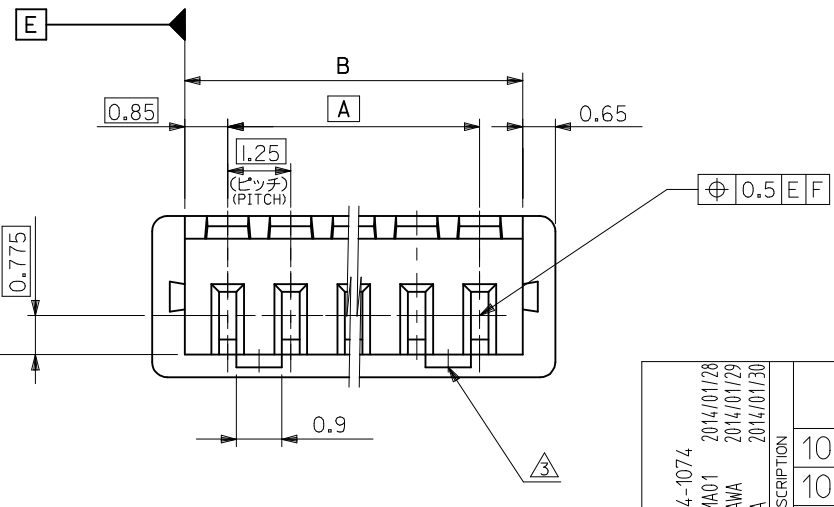
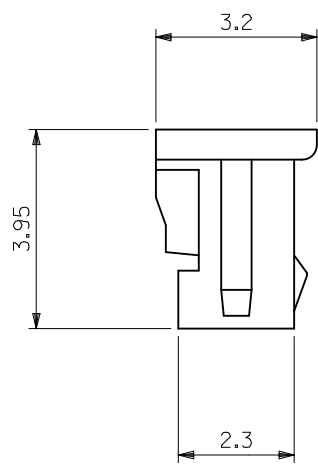
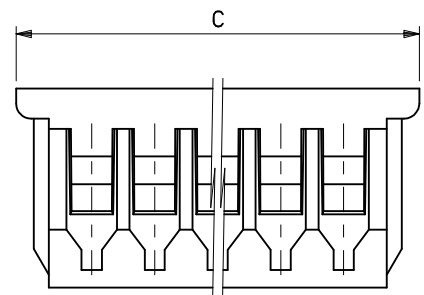
トレードマーク
TRADE MARK



SECT. G-G

注記 NOTES

- △ 適合ターミナル : 50058, 50079 シリーズ
APPLICABLE TERMINAL : 50058, 50079 SERIES
- 2 嵌合相手 : 53047, 53048, 53261, 53398 シリーズ
MATE WITH : 53047, 53048, 53261, 53398 SERIES
- △ ロックは、2, 3極は1ヶ, 4極以上は2ヶとする。
LOCKING WINDOW : ONE PLACE FOR 2 & 3 CKT.
AND TWO PLACES FOR MORE THAN 3 CKT.



MATERIAL
PBTP UL94V-0

20.5	19.2	17.5	51021-1500	15
19.25	17.95	16.25	-1400	14
18	16.7	15	-1300	13
16.75	15.45	13.75	-1200	12
15.5	14.2	12.5	-1100	11
14.25	12.95	11.25	-1000	10
13	11.7	10	-0900	9
11.75	10.45	8.75	-0800	8
10.5	9.2	7.5	-0700	7
9.25	7.95	6.25	-0600	6
8	6.7	5	-0500	5
6.75	5.45	3.75	-0400	4
5.5	4.2	2.5	-0300	3
4.25	2.95	1.25	51021-0200	2
C	B	A	ENG.NO.	極数 CKTS.

REVISED EC NO: J2014-1074 DRWN: TYAJIMA01 2014/01/28 CHKD: KASAKAWA 2014/01/29 APPR: NUKITA 2014/01/30	GENERAL TOLERANCES (UNLESS SPECIFIED)		DIMENSION STYLE MM ONLY		SCALE 10:1	DESIGN UNITS METRIC	THIRD ANGLE PROJECTION
	10 UNDER	±0.20	DRAWN BY TYAJIMA01	DATE 2014/01/28	TITLE 1.25 W/B CONN. REC. HOUSING		
	10 OVER 30 UNDER	±0.25	CHECKED BY KASAKAWA	DATE 2014/01/29			
	30 OVER	±0.30	APPROVED BY NUKITA	DATE 2014/01/30			
ANGULAR ±3 °		MATERIAL NO. SEE TABLE		DOCUMENT NO. SD-51021-005		SHEET NO. 1 OF 1	
DRAFT WHERE APPLICABLE MUST REMAIN WITHIN DIMENSIONS		THIS DRAWING CONTAINS INFORMATION THAT IS PROPRIETARY TO MOLEX INCORPORATED AND SHOULD NOT BE USED WITHOUT WRITTEN PERMISSION					

9 8 7 6 5 4 3 2