



Connectors > PCB Connectors > Wire-to-Board Connectors > Wire-to-Board Connector Assemblies & Housings



Connector Product Type: **Housing**

Connector & Housing Type: **Receptacle**

Connector System: **Cable-to-Board**

Number of Positions: **2**

Centerline (Pitch): **5 mm [.197 in]**

## Features

### Product Type Features

Connector Product Type	Housing
Connector & Housing Type	Receptacle
Connector System	Cable-to-Board
Sealable	No
Connector & Contact Terminates To	Wire & Cable

### Configuration Features

Keying & Polarized Position Locations	1D
Number of Positions	2
Number of Rows	1

### Contact Features

Contact Type	Socket
--------------	--------

### Termination Features

Termination Method to Wire & Cable	Crimp
------------------------------------	-------

### Mechanical Attachment

Strain Relief	Without
Panel Mount Feature	Without
PCB Mount Retention	Without
Mating Retention Type	Latch



Mating Retention	With
Connector Mounting Type	Cable Mount (Free-Hanging)

### Housing Features

Housing Entry Configuration	Both Ends Closed
Housing Material	Nylon 66/6
Centerline (Pitch)	5 mm [.197 in]
Housing Color	Natural

### Dimensions

Connector Length	9.2 mm [.362 in]
Connector Height	12.2 mm [.48 in]
Row-to-Row Spacing	5 mm [.197 in]

### Usage Conditions

Operating Temperature Range	-55 – 105 °C [-67 – 221 °F]
-----------------------------	-----------------------------

### Operation/Application

Circuit Application	Power
---------------------	-------

### Industry Standards

Glow Wire Rating	Standard Part - Not Glow Wire
UL Flammability Rating	UL 94V-0

### Packaging Features

Packaging Quantity	1
Packaging Method	Package

### Product Compliance

[For compliance documentation, visit the product page on TE.com>](#)

EU RoHS Directive 2011/65/EU	Compliant
EU ELV Directive 2000/53/EC	Compliant
China RoHS 2 Directive MIIT Order No 32, 2016	No Restricted Materials Above Threshold
EU REACH Regulation (EC) No. 1907/2006	Current ECHA Candidate List: JUNE 2022 (224) Candidate List Declared Against: JAN 2022 (223) SVHC > Threshold: Not Yet Reviewed
Halogen Content	Low Halogen - Br, Cl, F, I < 900 ppm per



homogenous material. Also BFR/CFR/PVC Free

Solder Process Capability

Not applicable for solder process capability

Product Compliance Disclaimer

This information is provided based on reasonable inquiry of our suppliers and represents our current actual knowledge based on the information they provided. This information is subject to change. The part numbers that TE has identified as EU RoHS compliant have a maximum concentration of 0.1% by weight in homogenous materials for lead, hexavalent chromium, mercury, PBB, PBDE, DBP, BBP, DEHP, DIBP, and 0.01% for cadmium, or qualify for an exemption to these limits as defined in the Annexes of Directive 2011/65/EU (RoHS2). Finished electrical and electronic equipment products will be CE marked as required by Directive 2011/65/EU. Components may not be CE marked. Additionally, the part numbers that TE has identified as EU ELV compliant have a maximum concentration of 0.1% by weight in homogenous materials for lead, hexavalent chromium, and mercury, and 0.01% for cadmium, or qualify for an exemption to these limits as defined in the Annexes of Directive 2000/53/EC (ELV). Regarding the REACH Regulation, the information TE provides on SVHC in articles for this part number is based on the latest European Chemicals Agency (ECHA) 'Guidance on requirements for substances in articles' posted at this URL: <https://echa.europa.eu/guidance-documents/guidance-on-reach>

### Compatible Parts



TE Part # 521204-1  
POSI-LOK HSG.250-2 POS RAST5



TE Part # 521204-6  
RAST 5,HSG,2P,POSILOCK MKIII



TE Part # 521204-5  
HSG,POS LOC,MARKIII,250 SRS,2P



TE Part # 521204-2  
HSG RCPT POSI MK 111 250 2POS



TE Part # 1-521204-1  
RAST 5,HSG,2P,GWT POSILOCK MKI



TE Part # 521204-3  
HSG,2P,POS LOCK,MKIII,250 SERI



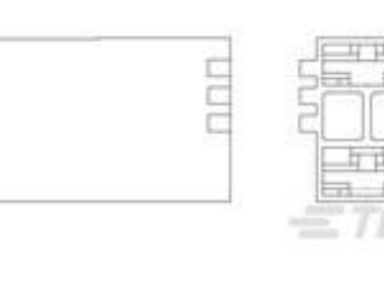
TE Part # 521204-7  
RAST 5,HSG,2P,POSILOCK MKIII



TE Part # 521204-8  
RAST 5,HSG,2P,POSILOCK MKIII



TE Part # 1-521204-0  
POSI-LOK HSG 250 RAST5 spec

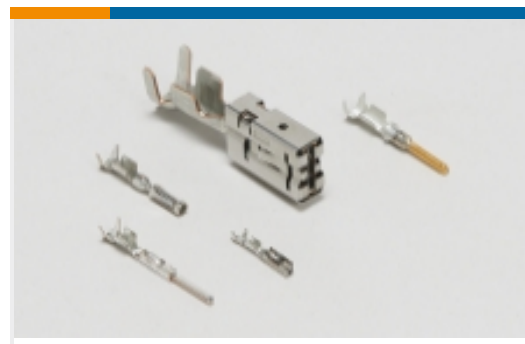


TE Part # 1969504-1  
HGS, POSITIVE-LOCK, MKIII, .250, 3P

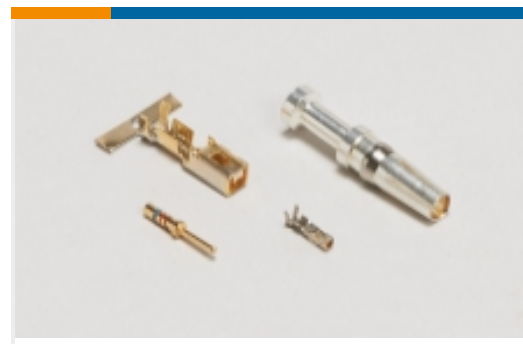


TE Part # 521204-9  
POSI-LOK HSG 250 RAST5 02-C

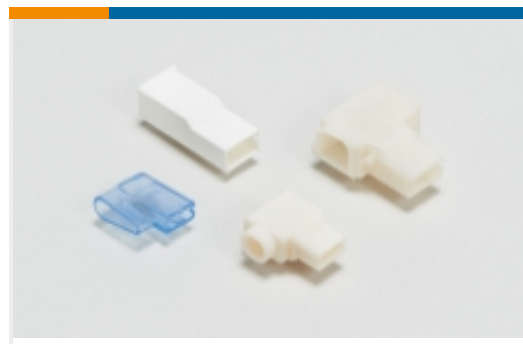
### Also in the Series | RAST 5 IDC Connectors



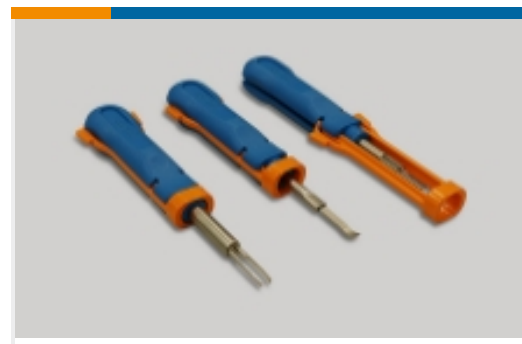
Automotive Terminals(8)



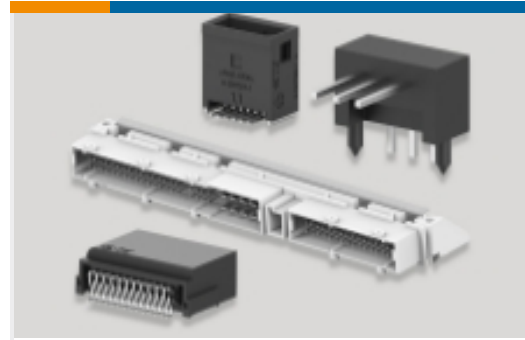
Connector Contacts(12)



Crimp Terminal Housings(41)



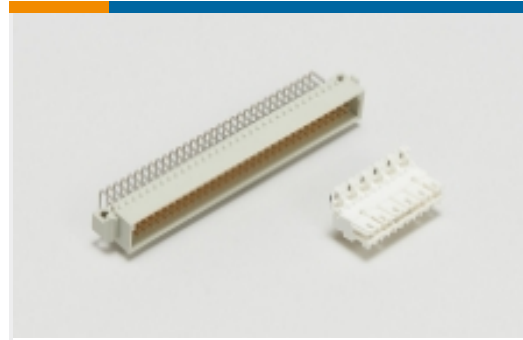
Insertion & Extraction Tools(1)



PCB Headers & Receptacles(424)



Rectangular Connector Housings(1)



Standard Edge Connectors(47)



Standard Rectangular Connectors(112)



Wire-to-Board Connector Assemblies & Housings(213)



Wire-to-Board Connector Contacts(2)

## Customers Also Bought



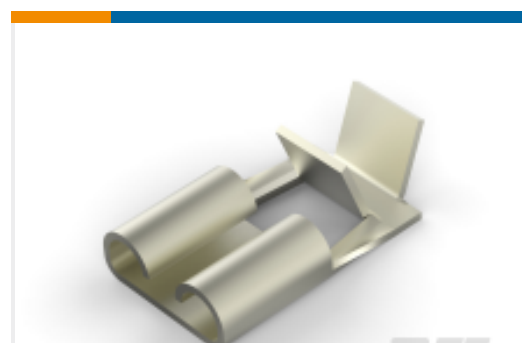
TE Part #1969104-1  
ULTRA POD: Straight, Receptacle  
Assembly, Unplated, .250 inch



TE Part #644267-2  
SL156 HSG (YELLOW)



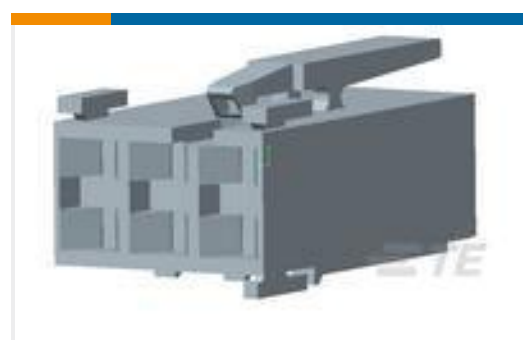
TE Part #1-521253-3  
PL MKIII & FASTON 250 HSG 2P  
NYLON GREEN



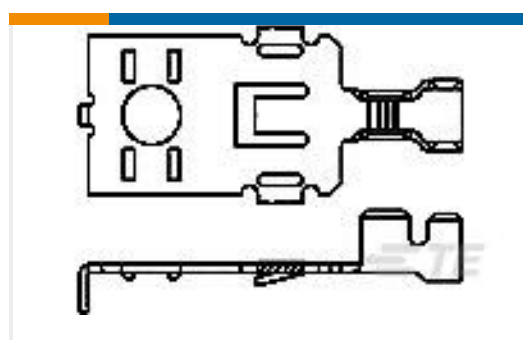
TE Part #1217972-2  
250 FASTON, FLAG, REC., 18-14 AWG,  
NPST



TE Part #1385719-1  
UP.250 STRAIGHT SA110F220F LM



TE Part #2-1241817-3  
STD TIM HOUSING MKII 3POS



TE Part #63496-1  
POWER RING TERMINAL TAB 16-10  
AWG BR



TE Part #530219P009  
RNF-150-1/4-0-1.25IN

## Documents



### Product Drawings

[HSG,2P,POS LOCK,MKIII,250 SERI](#)

English

---

### CAD Files

[3D PDF](#)

3D

Customer View Model

[ENG\\_CVM\\_CVM\\_521204-4\\_W.2d\\_dxf.zip](#)

English

Customer View Model

[ENG\\_CVM\\_CVM\\_521204-4\\_W.3d\\_igs.zip](#)

English

Customer View Model

[ENG\\_CVM\\_CVM\\_521204-4\\_W.3d\\_stp.zip](#)

English

By downloading the CAD file I accept and agree to the [Terms and Conditions](#) of use.

---

### Product Specifications

[Product Specification](#)

English

---

### Product Environmental Compliance

[Product Compliance](#)

English

[Product Compliance](#)

English