

FEATURES AND SPECIFICATIONS

Features and Benefits

- Stacking height: 2.0mm
- Sizes 40 to 80 circuits
- High temperature housing
- Durable blade on beam contact interface
- Anti-flux design

Reference Information

Packaging: Embossed tape
 Mates With: [53729](#)
 Designed In: Millimeters

Electrical

Voltage: 50V
 Current: 0.5A
 Contact Resistance: 30mΩ max.
 Dielectric Withstanding Voltage: 500V AC
 Insulation Resistance: 500 MΩ min.

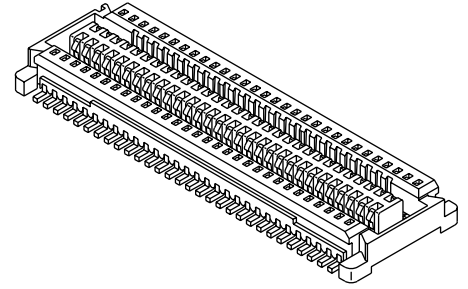
Physical

Housing: White glass-filled LCP, UL 94V-0
 Contact: Phosphor Bronze
 Vacuum Pick-Up Tape: Polyimide
 Plating: Gold over nickel
 Operating Temperature: -40 to +105°C

molex® 0.50mm (.020") Pitch Board-to-Board Receptacle

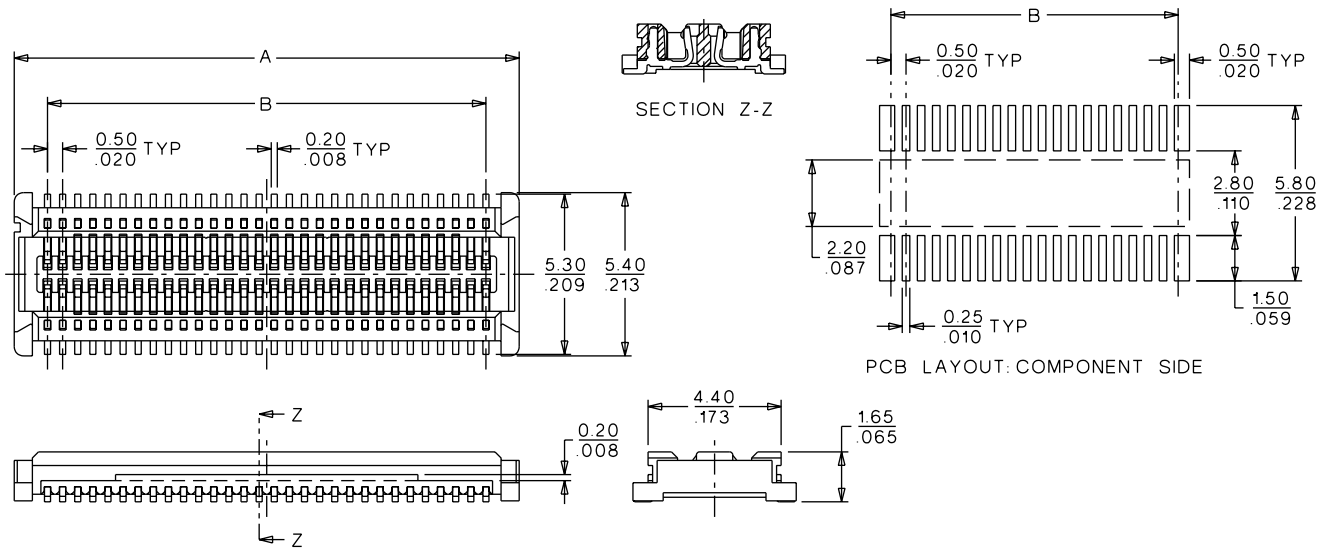
52974

SMT, Dual Row Vertical Stacking



0.40 to 1.60mm (.016 to .063") Pitch

CATALOG DRAWING (FOR REFERENCE ONLY)



ORDERING INFORMATION AND DIMENSIONS

Circuits	Order No.		Dimension		Carrier Tape Width
	With Vacuum Pick-Up Tape	Without Vacuum Pick-Up Tape	A	B	
40	52974-0404	52974-0408	11.70 (.460)	9.50 (.374)	24.00 (.945)
50	52974-0504	52974-0508	14.20 (.559)	12.00 (.472)	24.00 (.945)
60	52974-0604	52974-0608	16.70 (.657)	14.50 (.570)	24.00 (.945)
80	52974-0804	52974-0808	21.70 (.854)	19.50 (.767)	32.00 (1.260)

Note: Contact Molex for embossed tape specifications

Note: Use only one connector per daughterboard in order to insure proper mating alignment