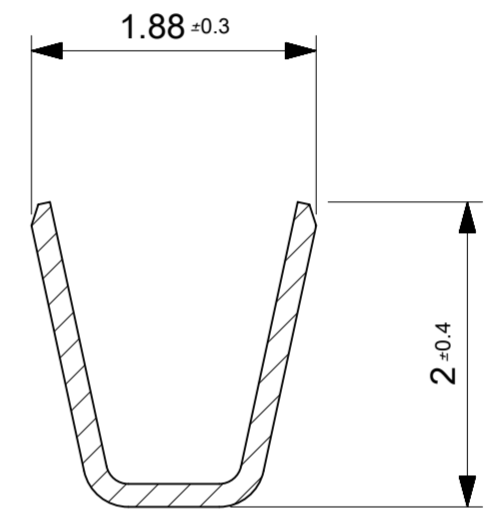
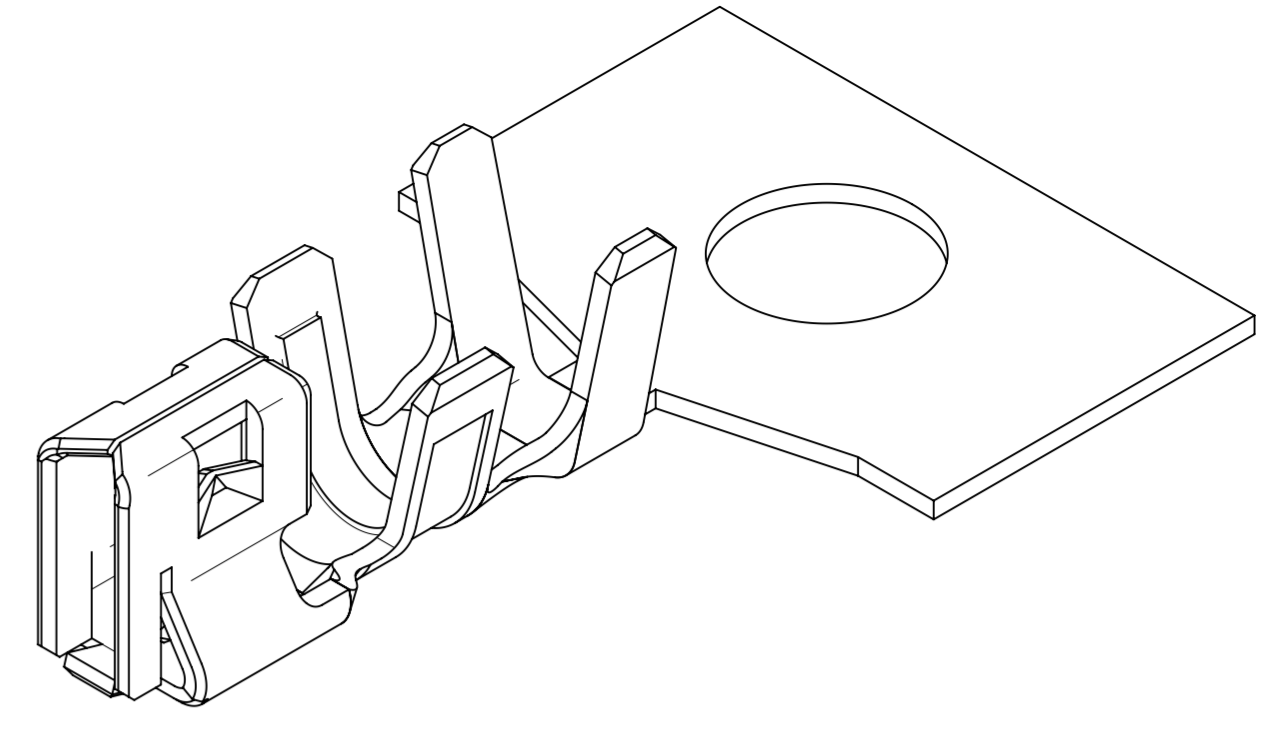
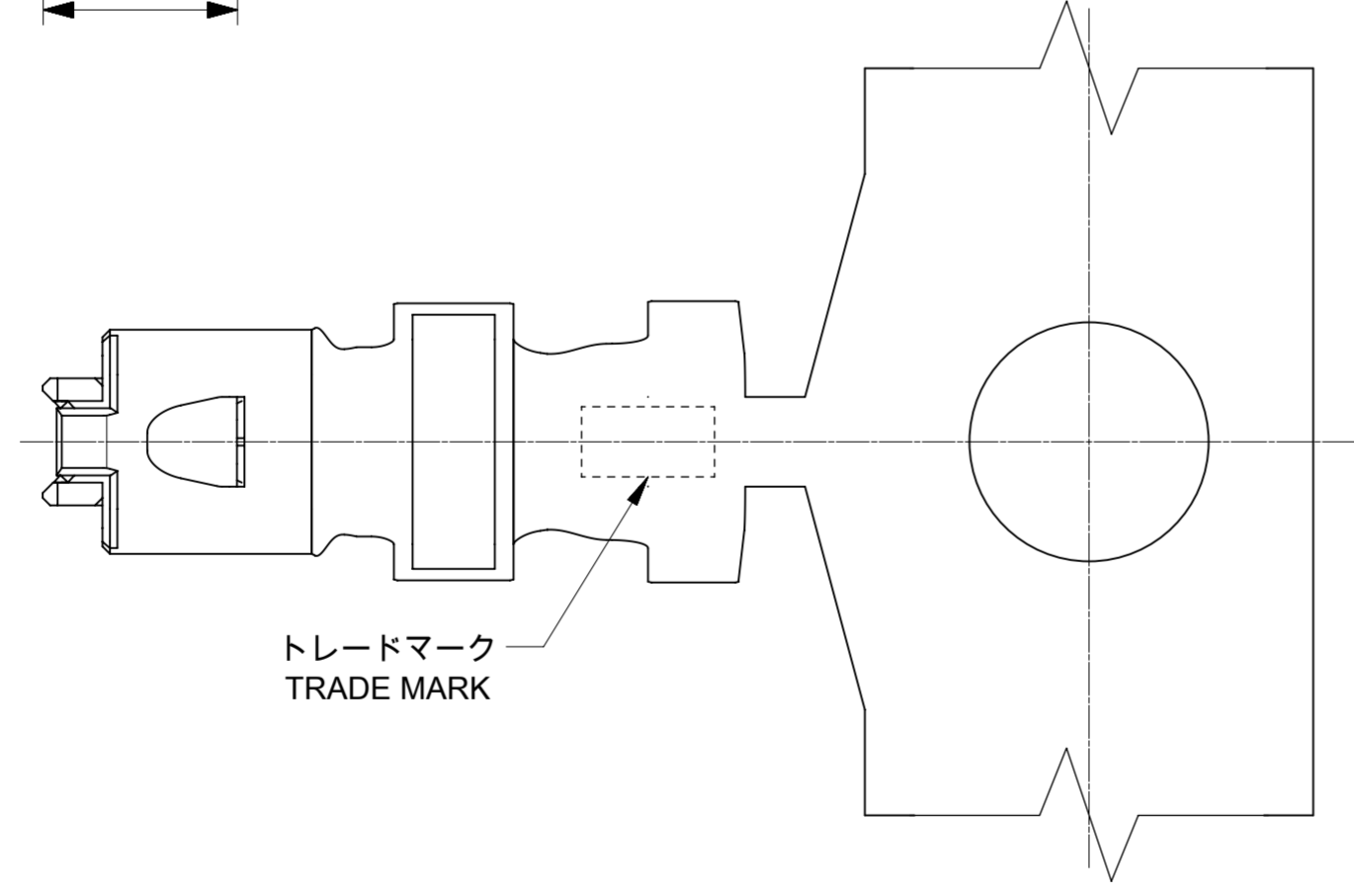


SECTION Z-Z



SECTION Y-Y



NOTES

- 1. 材料及び仕上げ（めっき仕様）：TABLE 1 参考
MATERIAL AND FINISHES : SEE TABLE 1
- 2. 適用製品及び各種仕様書はSHEET 2をご参照ください。
PLEASE REFER TO SHEET 2 FOR APPLICABLE PRODUCTS AND VARIOUS SPECIFICATIONS.
- 3. 本製品は錫めっき品です。金めっき品は593540000-SD/PSD/000をご参照ください。
THIS PRODUCT IS A TIN PLATING.
PLEASE REFER TO 593540000-SD/PSD/000 FOR GOLD PLATING.

| | | | | |
|-----------------------|----------------------|-------------------|----------------|--------------|
| ∅0.95 - ∅1.40 | AWG#22-26 | ポリ袋 POLY BAG | 503728100 | バラ状 LOOSE |
| | | リール REEL | 503728000 | 連鎖状 CHAIN |
| 絶縁被覆外径範囲 INS RANGE | 連用電線範囲 WIRE RANGE | 梱包形態 PACKAGING | 発注番号 ENG NO | 端子形状 FORM |

THIS DRAWING CONTAINS INFORMATION THAT IS PROPRIETARY TO MOLEX ELECTRONIC TECHNOLOGIES, LLC AND SHOULD NOT BE USED WITHOUT WRITTEN PERMISSION

| | | | | | | | | |
|--|--------|--|------------|-----------------|---------|----------|----------|--------------|
| DIMENSION UNITS | SCALE | CURRENT REV DESC: REDRAWN AND REVISED | | | | | | |
| mm | NTS | <p>MICRO-LATCH 2.0 TIN RECEPTACLE CRIMP TERMINAL</p> <p>PRODUCT CUSTOMER DRAWING</p> | | | | | | |
| GENERAL TOLERANCES (UNLESS SPECIFIED) | | | | | | | | |
| ANGULAR TOL | ± 3.0° | | | | | | | |
| 4 PLACES | ± 0.2 | | | | | | | |
| 3 PLACES | ± 0.2 | | | | | | | |
| 2 PLACES | ± 0.2 | EC NO: 636761 | 2019/09/20 | DOCUMENT NUMBER | | DOC TYPE | DOC PART | REVISION |
| 1 PLACE | ± 0.2 | DRWN: HHUSSIN | 2020/04/30 | 503720000-SD | | PSD | 000 | A |
| 0 PLACES | ± 0.2 | CHK'D: SAKIYAMA | 2020/05/01 | MATERIAL NUMBER | | CUSTOMER | | SHEET NUMBER |
| DRAFT WHERE APPLICABLE MUST REMAIN WITHIN DIMENSIONS | | THIRD ANGLE PROJECTION | DRAWING | SERIES | GENERAL | | 1 OF 2 | |

TABLE 1

| 部品 PART | 材質 MATERIAL | |
|-------------------|--------------------------|--|
| ターミナル TERMINAL | MATERIAL | リン青銅 PHOSPHOR BRONZE |
| | 全面めっき OVERALL PLATING | 錫めっき : 0.9 micro-meters MIN リフロー処理 (前めっき) REFLOW TREATMENT (PRE-PLATING) |

△ 2 適用製品及び各種仕様書
 APPLICABLE PRODUCTS AND VARIOUS SPECIFICATIONS

| | | | | |
|--------------------------------|---------------------|-------------|----------------------|--|
| 梱包仕様書 PACKING SPECIFICATION | PART NUMBER | | SPECIFICATION NUMBER | |
| | 503728000/8100 | | SPK-50372-001 | |
| 適用ハウジング APPLICABLE HOUSING | SINGLE TYPE | | | |
| シリーズ番号 SERIES NO | 51065 | | | |
| 適用嵌合相手 MATE WITH | THROUGH HOLE | | | |
| | TIN PLATING | | | |
| | VERTICAL | RIGHT ANGLE | | |
| シリーズ番号 SERIES NO | 53253 | 53254 | | |
| 製品仕様書 PRODUCT SPECIFICATION | 510650000-PS/PS/000 | | | |

製品嵌合図は各"適用嵌合相手"図面参照のこと
 MATING VIEW : REFER TO EACH "MATE WITH" PART DRAWING

| | | | | | | | | | | | | |
|---|--------|--|---------|--------|-----------------|---|----------|-----------------|--------------|----------|----------|--------------|
| THIS DRAWING CONTAINS INFORMATION THAT IS PROPRIETARY TO MOLEX ELECTRONIC TECHNOLOGIES, LLC AND SHOULD NOT BE USED WITHOUT WRITTEN PERMISSION | | | | | | | | | | | | |
| DIMENSION UNITS | SCALE | CURRENT REV DESC: REDRAWN AND REVISED | | | | <h1 style="margin: 0;">molex</h1> | | | | | | |
| mm | NTS | | | | | | | | | | | |
| GENERAL TOLERANCES (UNLESS SPECIFIED) | | EC NO: 636761 DRWN: HHUSSIN 2019/09/20 CHK'D: SAKIYAMA 2020/04/30 APPR: KOMURAKAMI 2020/05/01 | | | | MICRO-LATCH 2.0 TIN RECEPTACLE CRIMP TERMINAL | | | | | | |
| ANGULAR TOL | ± 3.0° | | | | | PRODUCT CUSTOMER DRAWING | | | | | | |
| 4 PLACES | ± 0.2 | | | | | INITIAL REVISION: | | | | | | |
| 3 PLACES | ± 0.2 | | | | | DRWN: HHUSSIN 2019/09/20 | | DOCUMENT NUMBER | | DOC TYPE | DOC PART | REVISION |
| 2 PLACES | ± 0.2 | | | | | APPR: KOMURAKAMI 2020/05/01 | | 503720000-SD | | PSD | 000 | A |
| 1 PLACE | ± 0.2 | | | | | DRWN: HHUSSIN 2019/09/20 | | MATERIAL NUMBER | | CUSTOMER | | SHEET NUMBER |
| 0 PLACES | ± 0.2 | APPR: KOMURAKAMI 2020/05/01 | | 50372 | GENERAL | | 2 OF 2 | | | | | |
| DRAFT WHERE APPLICABLE MUST REMAIN WITHIN DIMENSIONS | | THIRD ANGLE PROJECTION | DRAWING | SERIES | MATERIAL NUMBER | | CUSTOMER | | SHEET NUMBER | | | |
| | | | A2-SIZE | 50372 | | | | | 2 OF 2 | | | |

| | | | | |
|-----------------|----|--------------|------------|----------|
| DOCUMENT STATUS | P1 | RELEASE DATE | 2020/05/01 | 01:51:28 |
|-----------------|----|--------------|------------|----------|