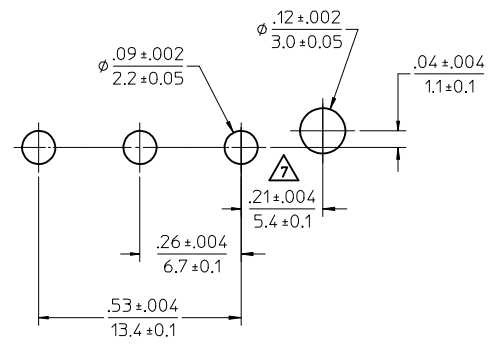
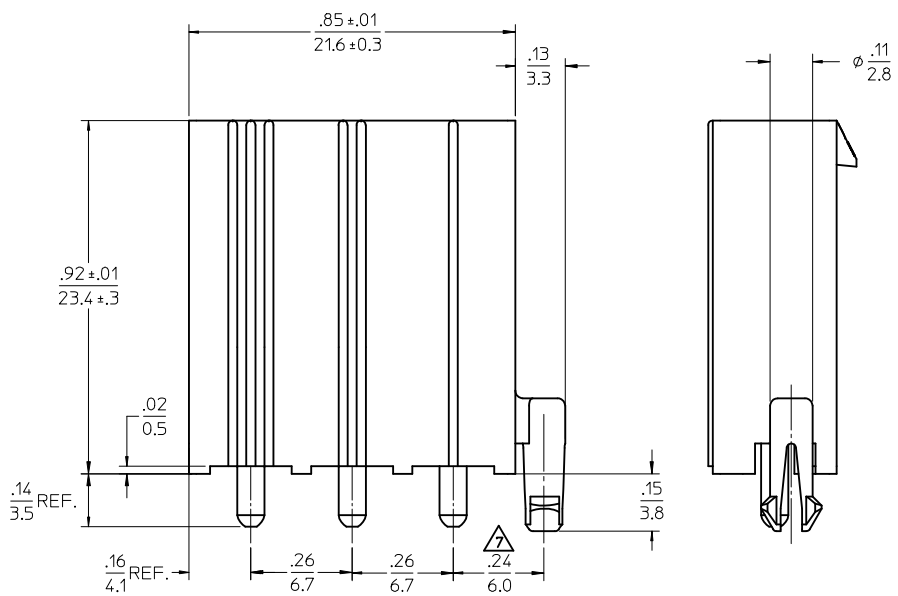


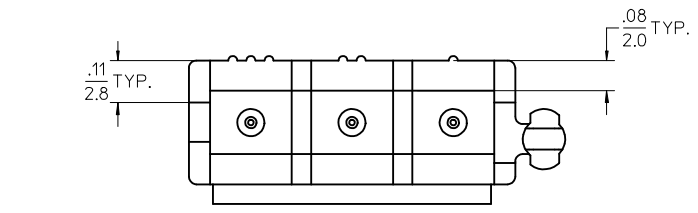
SECTION Z-Z



RECOMMENDED P.C. BOARD HOLE DIM. Δ

NOTES:

- MATERIAL
HOUSING: NYLON 66, UL94V-2
PIN: CARTRIDGE BRASS, ALLOY C26000
 - FINISH
HOUSING: NA
PIN: TIN .0002/(.005) MIN OVER NICKEL
 - PRODUCT SPEC - NA
 - PACKAGING SPECIFICATION: PK-45938-001
 - MATES WITH 3191-03 SERIES RECEPTACLES
- Δ FOR USE ON .062/(1.57) THICK P.C. BOARDS
- Δ DIFFERENCE OF DIMENSION TO PREVENT RISE FROM CIRCUIT BOARD.



UPDATE PACK. NOTE EC NO: UCP2006-0005 DRWN:JLOWE 2005/07/28 CHKD:ADERR 2005/07/28 APPR:FSMITH 2005/07/29	QUALITY SYMBOLS ▽=0 ▽=0	GENERAL TOLERANCES (UNLESS SPECIFIED)		DIMENSION STYLE IN/MM		SCALE 4:1	DESIGN UNITS INCH	THIRD ANGLE PROJECTION
		4 PLACES ± --- ± --- 3 PLACES ± --- ± .010 2 PLACES ± 0.25 ± .015 1 PLACE ± 0.39 ± ---		DRAWN BY DATE ADERR 2005/01/18		TITLE .093/(2.36) SERIES 3 CKT HEADER ASSEMBLY, CUSTOM		
		ANGULAR ± 3 °		CHECKED BY DATE ADERR 2005/01/18		APPROVED BY DATE FSMITH 2005/01/18		
		DRAFT WHERE APPLICABLE MUST REMAIN WITHIN DIMENSIONS		MATERIAL NO. 459380002		DOCUMENT NO. SD-45938-002		SHEET NO. 1 OF 1
A1		THIS DRAWING CONTAINS INFORMATION THAT IS PROPRIETARY TO MOLEX INCORPORATED AND SHOULD NOT BE USED WITHOUT WRITTEN PERMISSION						