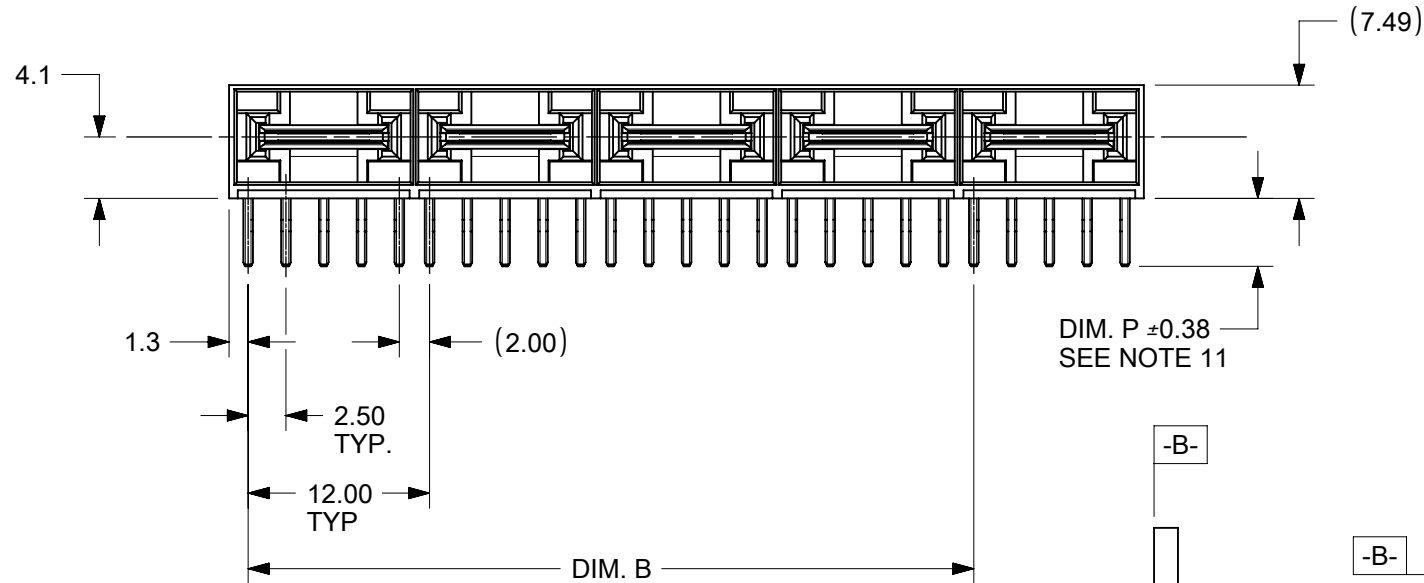
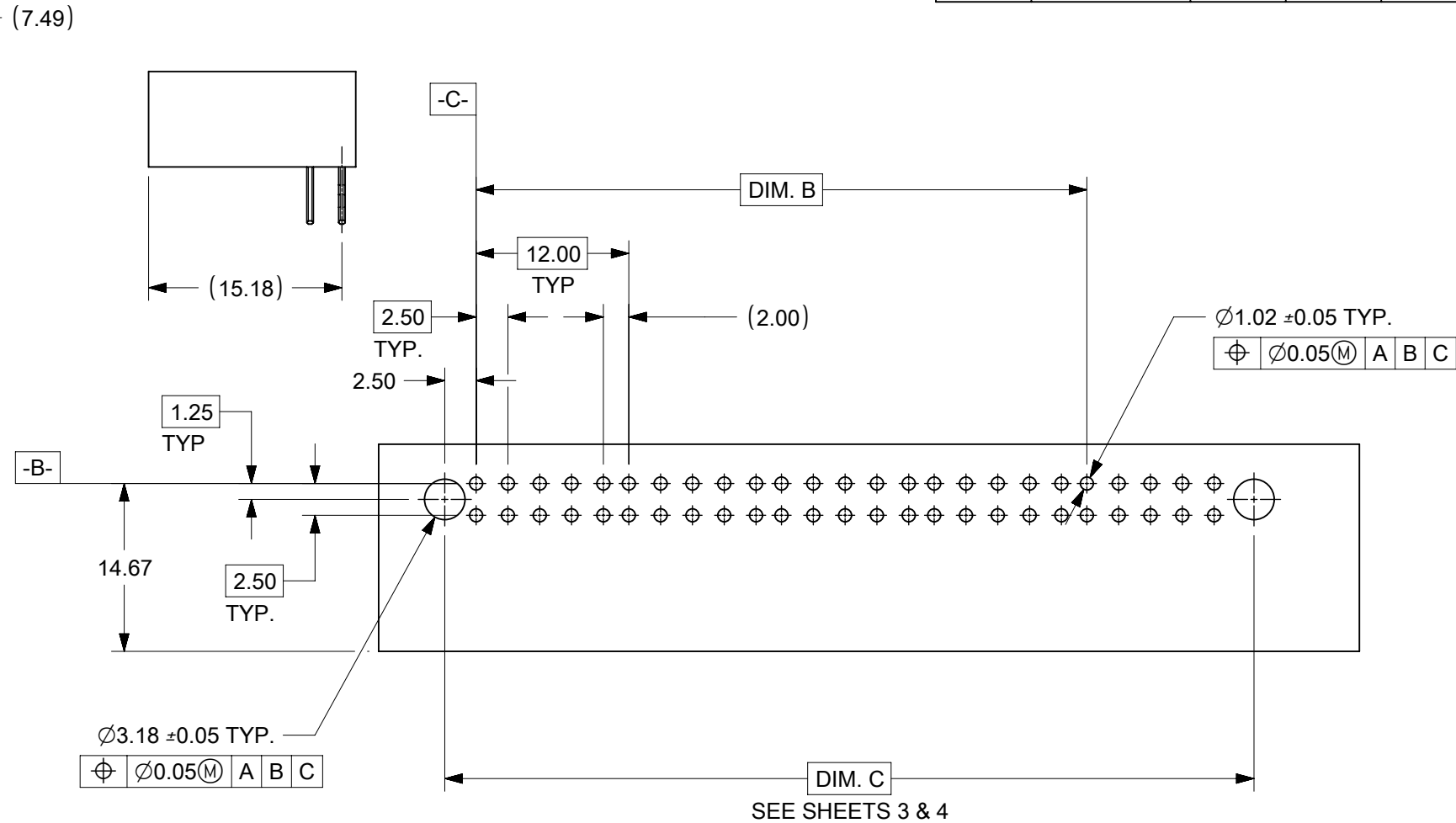


SEE NOTE 10



DIM. P  $\pm 0.38$   
SEE NOTE 11



SEE SHEETS 3 & 4

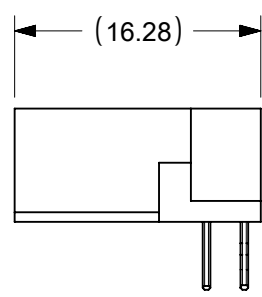
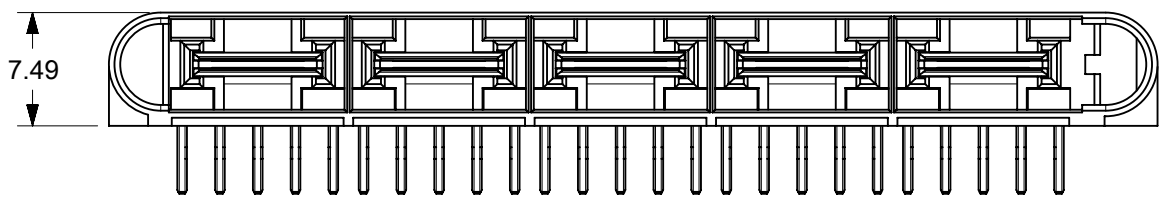
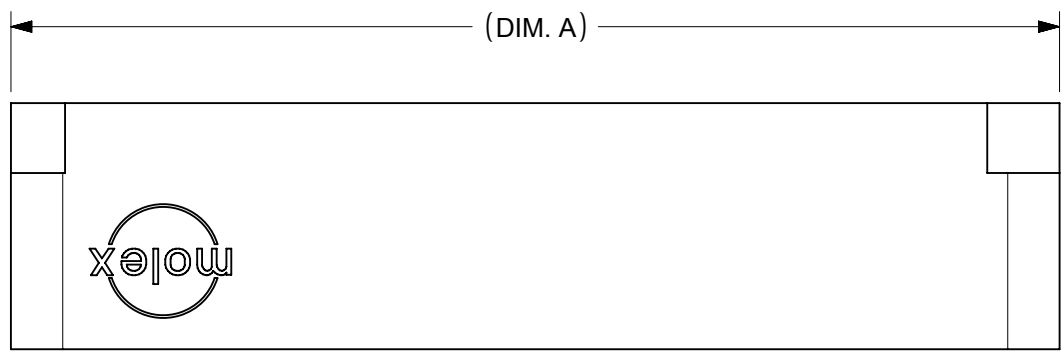
CKT SIZE	MATERIAL NUMBER	DIM. A REF	DIM B	DIM P
4	45985-4911	24.60	12.00	4.50
6	45985-6911	36.60	24.00	
8	45985-8911	48.60	36.00	
10	45985-1911	60.60	48.00	3.60
4	45985-4921	24.60	12.00	
6	45985-6921	36.60	24.00	
8	45985-8921	48.60	36.00	2.90
10	45985-1921	60.60	48.00	
4	45985-4931	24.60	12.00	
6	45985-6931	36.60	24.00	
8	45985-8931	48.60	36.00	
10	45985-1931	60.60	48.00	

NOTES:

- MATERIAL:  
HOUSING: GLASS FILLED LCP (LIQUID CRYSTAL POLYMER); UL94V-0; COLOR: BLACK  
TERMINAL: COPPER ALLOY
- FINISH: SELECT GOLD: 0.76 MICROMETER/30 MICROINCH MINIMUM, IN CONTACT AREA,  
SELECT TIN: 3.81 MICROMETER/150 MICROINCH MINIMUM, IN PC TAIL AREA  
BOTH OVER NICKEL: 1.27 MICROMETER/50 MICROINCH MINIMUM.
- PRODUCT SPECIFICATION: PS-45984-001
- PACKAGING SPECIFICATION: TRAY PER PK-45984-001
- SEE SHEET 5 FOR CIRCUIT IDENTIFICATION.
- PARTS ARE RoHS COMPLIANT.
- PEG HOLES ARE OPTIONAL. SEE SHEET 3 & 4.
- MATES TO MOLEX 45984 SERIES RECEPTACLE.
- PARTS CONFORM TO CLASS B REQUIREMENTS OF COSMETIC SPECIFICATION PS-45499-002.
- DATE CODE (3-DIGIT DAY, 1-DIGIT YEAR) TO BE LOCATED AND PRINTED AS SHOWN.
- DIM. P TO BE MEASURED FROM THE HOUSING STAND-OFF TO THE TERMINAL TIP.

PCB LAYOUT: COMPONENT SIDE  
THICKNESS: SEE CHART

THIS DRAWING CONTAINS INFORMATION THAT IS PROPRIETARY TO MOLEX ELECTRONIC TECHNOLOGIES, LLC AND SHOULD NOT BE USED WITHOUT WRITTEN PERMISSION											
DIMENSION UNITS <b>mm</b>		SCALE <b>2:1</b>		CURRENT REV DESC: TAIL LENGTH DIM. UPDATED				<b>molex</b>		LPH PLUG ASSEMBLY RIGHT ANGLE POWER CONNECTOR	
GENERAL TOLERANCES (UNLESS SPECIFIED)				EC NO: 641079							
4 PLACES $\pm$				DRWN: YPUTTUR 2019/09/09				PRODUCT CUSTOMER DRAWING		DOCUMENT NUMBER <b>SD-45985-102</b>	
3 PLACES $\pm$				CHK'D: MBELLE 2019/11/11							
2 PLACES $\pm 0.25$				APPR: HTHYAGARAJ 2020/08/21				PSD		001	D1
1 PLACE $\pm$				INITIAL REVISION:				5/16/2006			
0 PLACES $\pm$				DRWN: BANDURA							
ANGULAR TOL $\pm 0.5^\circ$				APPR: PATEL							
DRAFT WHERE APPLICABLE MUST REMAIN WITHIN DIMENSIONS		THIRD ANGLE PROJECTION		DRAWING B-SIZE		SERIES 45985		MATERIAL NUMBER SEE CHART		CUSTOMER GENERAL MARKET	
								SHEET NUMBER 1 OF 5			



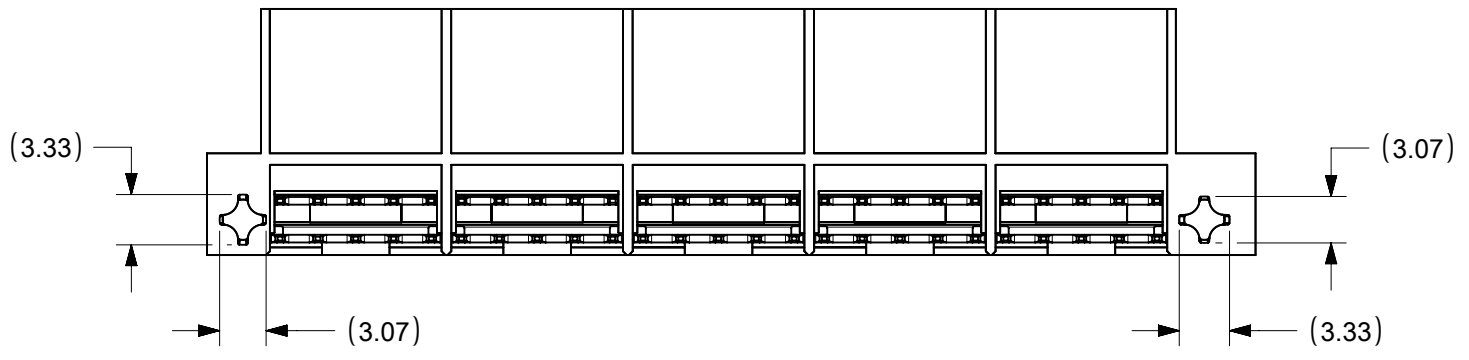
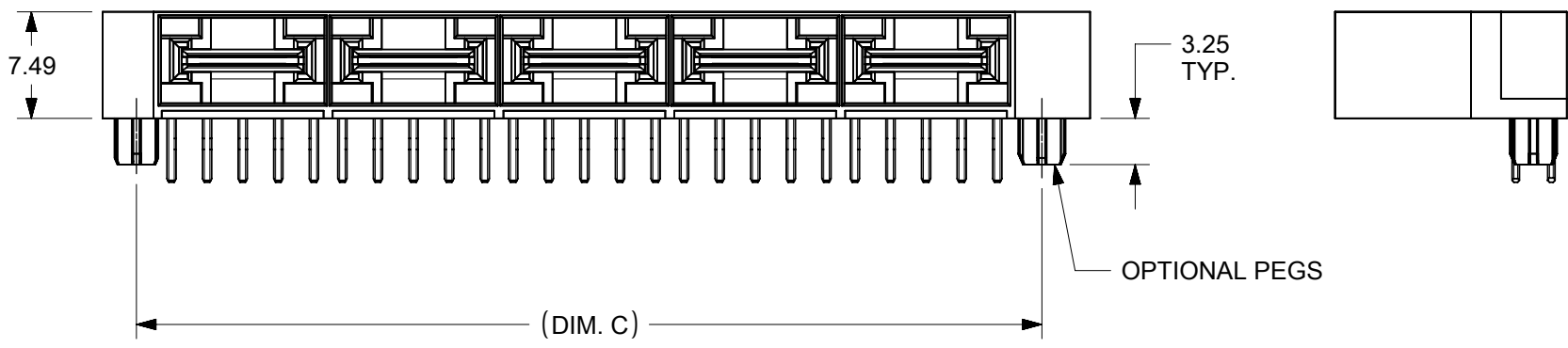
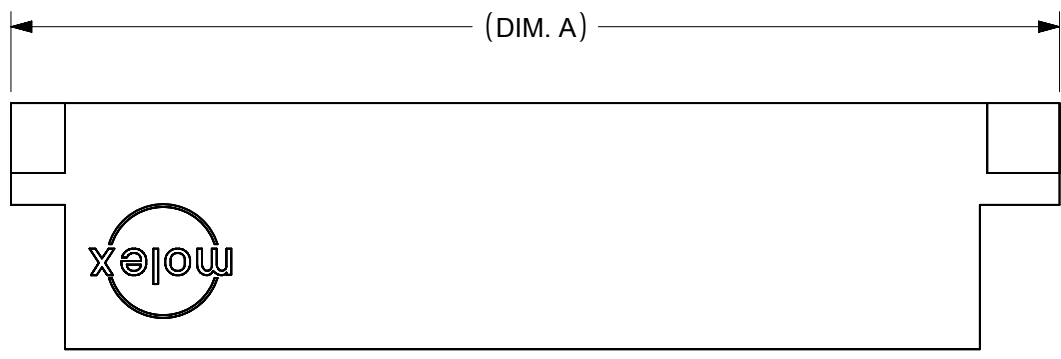
CKT SIZE	MATERIAL NUMBER	DIM. A REF	DIM B	DIM P
4	45985-4912	33.36	12.00	4.50
6	45985-6912	45.36	24.00	
8	45985-8912	57.36	36.00	
10	45985-1912	69.36	48.00	3.60
4	45985-4922	33.36	12.00	
6	45985-6922	45.36	24.00	
8	45985-8922	57.36	36.00	2.90
10	45985-1922	69.36	48.00	
4	45985-4932	33.36	12.00	
6	45985-6932	45.36	24.00	
8	45985-8932	57.36	36.00	
10	45985-1932	69.36	48.00	

NOTE:  
1. SEE SHEET 1 FOR DIMENSIONS NOT SHOWN.

THIS DRAWING CONTAINS INFORMATION THAT IS PROPRIETARY TO MOLEX ELECTRONIC TECHNOLOGIES, LLC AND SHOULD NOT BE USED WITHOUT WRITTEN PERMISSION										
DIMENSION UNITS <b>mm</b>		SCALE <b>2:1</b>		CURRENT REV DESC: TAIL LENGTH DIM. UPDATED			<b>molex</b>			
GENERAL TOLERANCES (UNLESS SPECIFIED)				EC NO: 641079						LPH PLUG ASSEMBLY RIGHT ANGLE POWER CONNECTOR
		MM	INCH	DRWN: YPUTTUR 2019/09/09			PRODUCT CUSTOMER DRAWING			
4 PLACES		±	±	CHK'D: MBELLE 2019/11/11			DOCUMENT NUMBER			
3 PLACES		±	±	APPR: HTHYAGARAJ 2020/08/21			SD-45985-102		DOC TYPE	DOC PART
2 PLACES		± 0.25	±	INITIAL REVISION:			PSD		001	REVISION
1 PLACE		±	±	DRWN: BANDURA 5/16/2006			D1			
0 PLACES		±	±	APPR: PATEL			MATERIAL NUMBER		CUSTOMER	SHEET NUMBER
ANGULAR TOL		± 0.5°		THIRD ANGLE PROJECTION		DRAWING	SERIES	SEE CHART	GENERAL MARKET	2 OF 5
DRAFT WHERE APPLICABLE MUST REMAIN WITHIN DIMENSIONS						B-SIZE	45985			

DOCUMENT STATUS	P1	RELEASE DATE	2020/08/21	10:00:09
-----------------	----	--------------	------------	----------

CKT SIZE	MATERIAL NUMBER	DIM. A REF	DIM B	DIM C	DIM P
4	45985-4913	33.36	12.00	27.60	4.50
6	45985-6913	45.36	24.00	39.60	
8	45985-8913	57.36	36.00	51.60	
4	45985-4923	33.36	12.00	27.60	3.60
6	45985-6923	45.36	24.00	39.60	
8	45985-8923	57.36	36.00	51.60	
4	45985-4933	33.36	12.00	27.60	2.90
6	45985-6933	45.36	24.00	39.60	
8	45985-8933	57.36	36.00	51.60	
10	45985-1933	69.36	48.00	63.60	



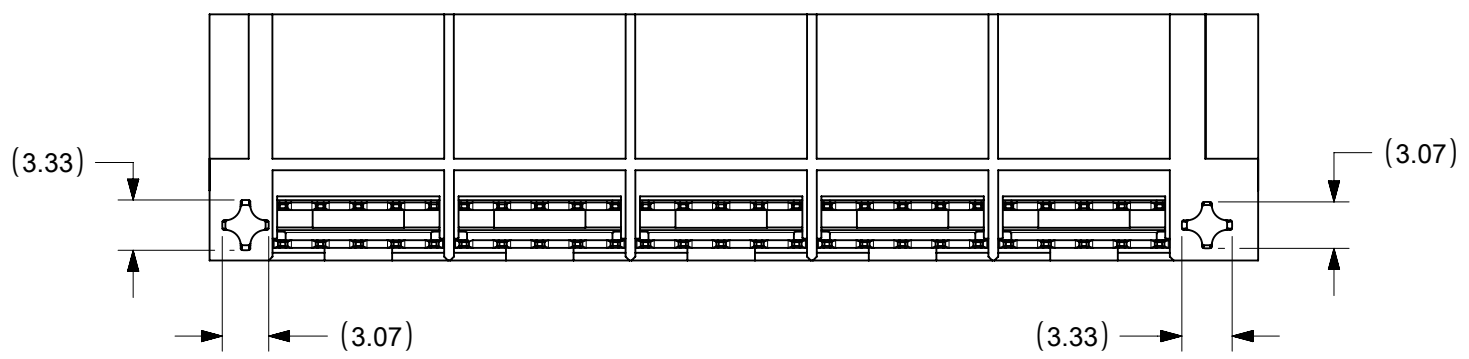
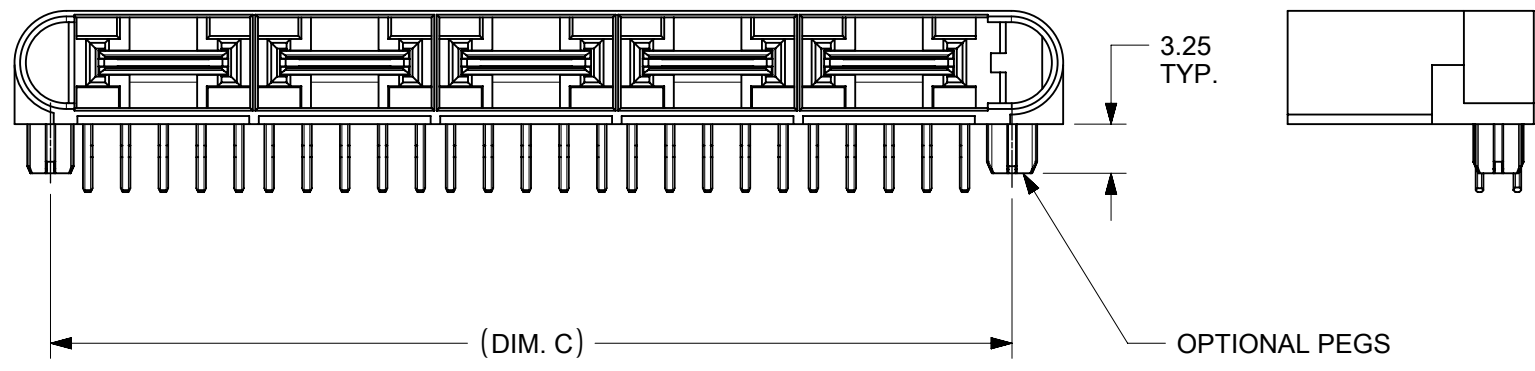
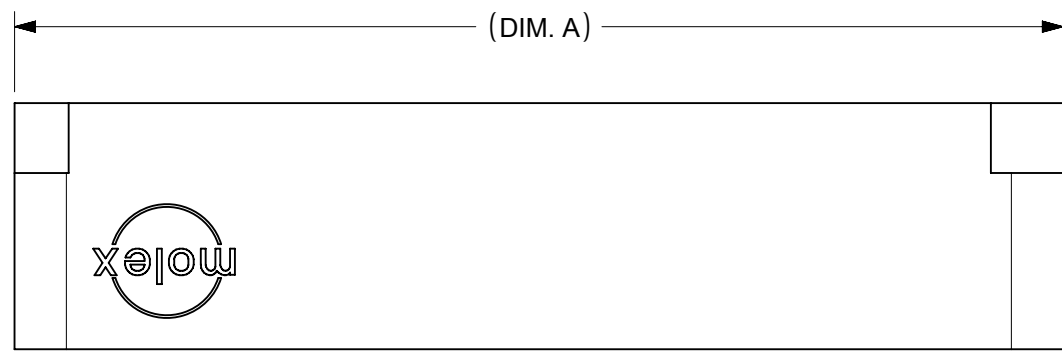
NOTE:  
1. SEE SHEET 1 FOR DIMENSIONS NOT SHOWN.

THIS DRAWING CONTAINS INFORMATION THAT IS PROPRIETARY TO MOLEX ELECTRONIC TECHNOLOGIES, LLC AND SHOULD NOT BE USED WITHOUT WRITTEN PERMISSION

DIMENSION UNITS <b>mm</b>	SCALE <b>1:1</b>	CURRENT REV DESC: TAIL LENGTH DIM. UPDATED	<b>molex</b>		
GENERAL TOLERANCES (UNLESS SPECIFIED)		EC NO: 641079			
4 PLACES ±	MM INCH	DRWN: YPUTTUR 2019/09/09	PRODUCT CUSTOMER DRAWING		
3 PLACES ±		CHK'D: MBELLE 2019/11/11	DOCUMENT NUMBER		
2 PLACES ± 0.25		APPR: HTHYAGARAJ 2020/08/21	SD-45985-102		
1 PLACE ±		INITIAL REVISION:	DOC TYPE	DOC PART	REVISION
0 PLACES ±		DRWN: BANDURA 5/16/2006	PSD	001	D1
ANGULAR TOL ± 0.5°		APPR: PATEL	SHEET NUMBER		
DRAFT WHERE APPLICABLE MUST REMAIN WITHIN DIMENSIONS	THIRD ANGLE PROJECTION	DRAWING	MATERIAL NUMBER	CUSTOMER	
		B-SIZE	SEE CHART	GENERAL MARKET	3 OF 5
		SERIES			
		45985			

10 9 8 7 6 5 4 3 2 1

CKT SIZE	MATERIAL NUMBER	DIM. A REF	DIM B	DIM C	DIM P
4	45985-4914	33.36	12.00	27.60	4.50
6	45985-6914	45.36	24.00	39.60	
8	45985-8914	57.36	36.00	51.60	
10	45985-1914	69.36	48.00	63.60	3.60
4	45985-4924	33.36	12.00	27.60	
6	45985-6924	45.36	24.00	39.60	
8	45985-8924	57.36	36.00	51.60	2.90
10	45985-1924	69.36	48.00	63.60	
4	45985-4934	33.36	12.00	27.60	
6	45985-6934	45.36	24.00	39.60	2.90
8	45985-8934	57.36	36.00	51.60	
10	45985-1934	69.36	48.00	63.60	

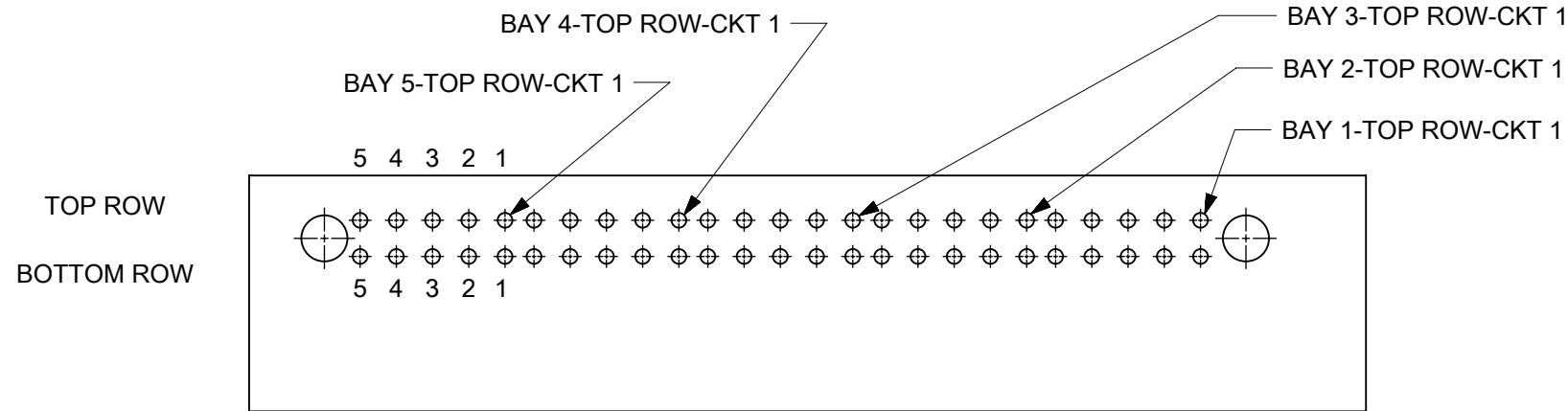
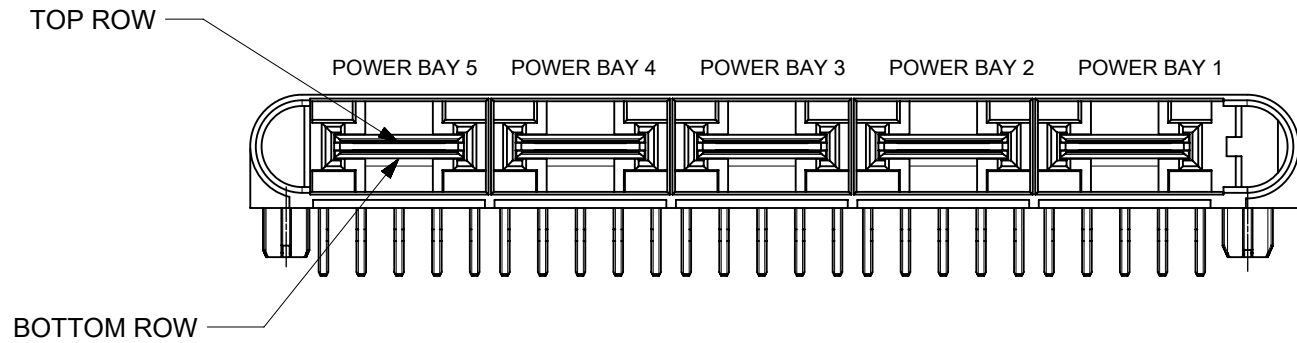


NOTE:  
1. SEE SHEET 1 FOR DIMENSIONS NOT SHOWN.

THIS DRAWING CONTAINS INFORMATION THAT IS PROPRIETARY TO MOLEX ELECTRONIC TECHNOLOGIES, LLC AND SHOULD NOT BE USED WITHOUT WRITTEN PERMISSION									
DIMENSION UNITS <b>mm</b>		SCALE <b>1:1</b>		CURRENT REV DESC: TAIL LENGTH DIM. UPDATED				<b>molex</b>	
GENERAL TOLERANCES (UNLESS SPECIFIED)				EC NO: 641079					
4 PLACES ±		MM		INCH		DRWN: YPUTTUR 2019/09/09		LPH PLUG ASSEMBLY RIGHT ANGLE POWER CONNECTOR	
3 PLACES ±		MM		INCH		CHK'D: MBELLE 2019/11/11			
2 PLACES ± 0.25		MM		INCH		APPR: HTHYAGARAJ 2020/08/21		PRODUCT CUSTOMER DRAWING	
1 PLACE ±		MM		INCH		INITIAL REVISION:		DOCUMENT NUMBER	
0 PLACES ±		MM		INCH		DRWN: BANDURA 5/16/2006		SD-45985-102	
ANGULAR TOL ± 0.5°		MM		INCH		APPR: PATEL		DOC TYPE DOC PART REVISION	
DRAFT WHERE APPLICABLE MUST REMAIN WITHIN DIMENSIONS		THIRD ANGLE PROJECTION		DRAWING		SERIES		MATERIAL NUMBER	
		B-SIZE		45985		SEE CHART		CUSTOMER	
						GENERAL MARKET		SHEET NUMBER	
								4 OF 5	

10 9 8 7 6 5 4 3 2 1

# CIRCUIT IDENTIFICATION



PCB LAYOUT: COMPONENT SIDE

THIS DRAWING CONTAINS INFORMATION THAT IS PROPRIETARY TO MOLEX ELECTRONIC TECHNOLOGIES, LLC AND SHOULD NOT BE USED WITHOUT WRITTEN PERMISSION									
DIMENSION UNITS		SCALE		CURRENT REV DESC: TAIL LENGTH DIM. UPDATED				<b>molex</b>	
mm		1:1		EC NO: 641079					
GENERAL TOLERANCES (UNLESS SPECIFIED)				DRWN: YPUTTUR		2019/09/09		LPH PLUG ASSEMBLY	
4 PLACES		±		CHK'D: MBELLE		2019/11/11		RIGHT ANGLE POWER CONNECTOR	
3 PLACES		±		APPR: HTHYAGARAJ		2020/08/21		PRODUCT CUSTOMER DRAWING	
2 PLACES		± 0.25		INITIAL REVISION:		5/16/2006		DOCUMENT NUMBER	
1 PLACE		±		DRWN: BANDURA		5/16/2006		SD-45985-102	
0 PLACES		±		APPR: PATEL				PSD 001 D1	
ANGULAR TOL ± 0.5°				THIRD ANGLE PROJECTION		DRAWING		SERIES	
DRAFT WHERE APPLICABLE MUST REMAIN WITHIN DIMENSIONS				THIRD ANGLE PROJECTION		B-SIZE		45985	
MATERIAL NUMBER				CUSTOMER		SHEET NUMBER			
SEE CHART				GENERAL MARKET		5 OF 5			