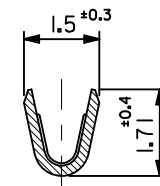
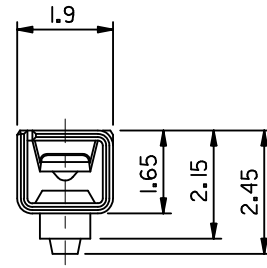
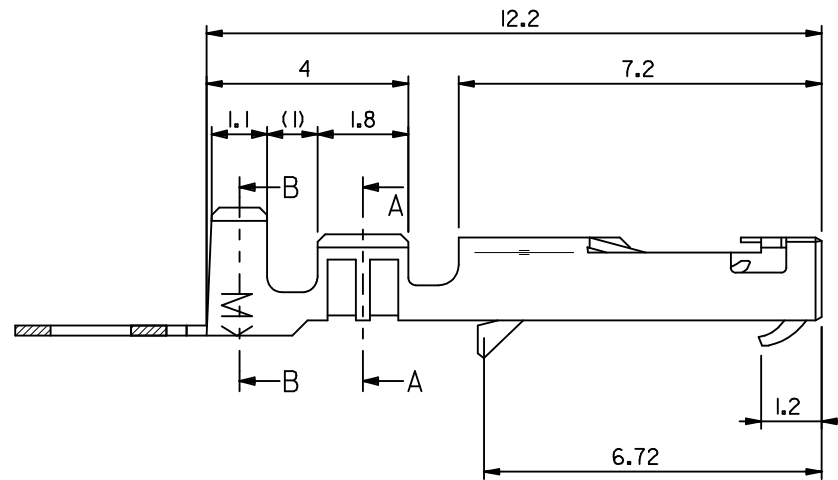
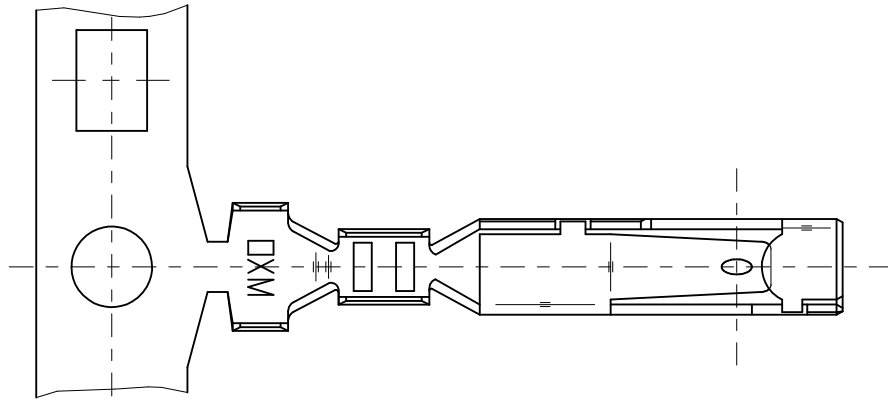
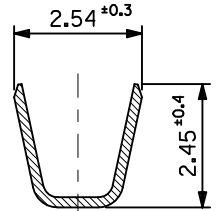


注記
NOTES

- 適合ハウジング : 51111 シリーズ
APPLICABLE HOUSING : 51111 SERIES
- 材料 MATERIAL
りん青銅 (t = 0.2)
PHOSPHOR BRONZE
錫メッキ 0.9 μm 以上 リフロー処理 (前めっき)
TIN 0.9 μm MIN. REFLOW TREATMENT (PRE-PLATED)
- 適用電線サイズ AWG #22-28
被覆外径 : 1.15~1.8mm
- ELV及びRoHS 適合品
ELV AND RoHS COMPLIANT



断面 A-A
SECT. A-A



断面 B-B
SECT. B-B

PLASTIC BAG	50397-8100	バラ状 LOOSE
REEL	50397-8000	連鎖状 CHAIN
PACKAGING SPEC.	オーダー番号 ORDER NO.	形態 FORM
CONNECTOR SERIES NO. 50397-8*00		

RELEASED EC NO: J2010-1818 DRWN: NYOSHIKAWA 2010/03/10 CHKD: KASAKAWA 2010/03/10 APPR: NUKITA 2010/03/11	GENERAL TOLERANCES (UNLESS SPECIFIED)		DIMENSION STYLE MM ONLY		SCALE ---	DESIGN UNITS METRIC	THIRD ANGLE PROJECTION
	10 UNDER	±0.2	DRAWN BY NYOSHIKAWA	DATE 2010/03/10	TITLE 2.5 WIRE TO WIRE CONN. CRIMP RECEPTACLE		
	10 OVER 30 UNDER	±0.25	CHECKED BY KASAKAWA	DATE 2010/03/10	MOLEX INCORPORATED		
	30 OVER	±0.3	APPROVED BY NUKITA	DATE 2010/03/10	MATERIAL NO. SEE TABLE	DOCUMENT NO. SD-50397-001	SHEET NO. 1 OF 1
0	DESCRIPTION ANGULAR ±3 ° DRAFT WHERE APPLICABLE MUST REMAIN WITHIN DIMENSIONS	THIS DRAWING CONTAINS INFORMATION THAT IS PROPRIETARY TO MOLEX INCORPORATED AND SHOULD NOT BE USED WITHOUT WRITTEN PERMISSION					