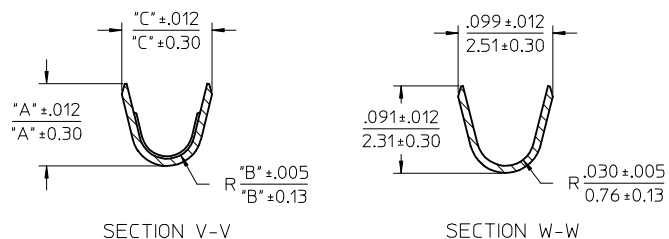
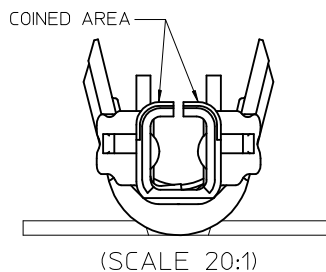
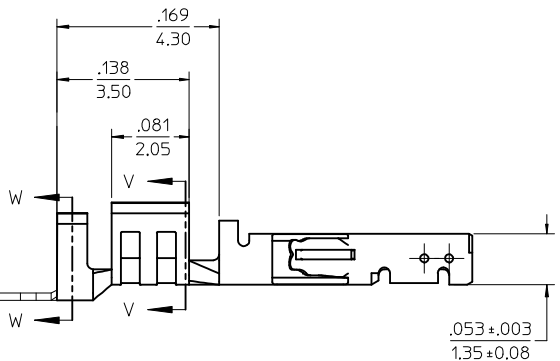
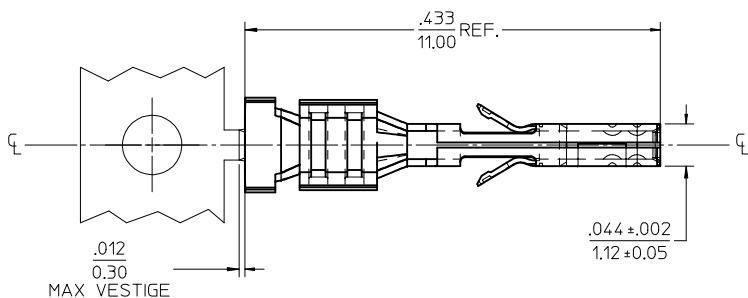


MATERIAL NUMBER	PLATING	WIRE SIZE	FORM	MAX INSULATION OUTSIDE DIA.	"A"	"B"	"C"
45807-0003	A	18 (SEE NOTE 9)	CHAIN	.073 / 1.85	.086 / 2.18	.029 / 0.74	.094 / 2.39
45807-0004	A	20	CHAIN	.073 / 1.85	.075 / 1.91	.025 / 0.64	.082 / 2.08



NOTES

- 1) MATERIAL: HSM COPPER
- 2) TERMINAL PLATING:  
"A" - .000100/0.00254 MIN BRIGHT TIN OVER  
.000050/0.00127 MIN NICKEL PLATE
- 3) PRODUCT SPECIFICATION: PS-45807-001
- 4) PACKAGING SPECIFICATION: PK-45807-001 (REEL)
- 5) TERMINAL FOR USE IN A MICRO FIT RECEPTACLE 43025-\*\*\*\*, 43645-\*\*\*\*, AND 44133-\*\*\*\*.
- 6) FOR TERMINAL ORIENTATION IN RECEPTACLE SEE DRAWING SDA-43025-\*\*\*\*, SDA-43645-\*\*\*\*, OR AS-44133-001.
- 7) THIS TERMINAL IS DESIGNED IN METRIC.
- 8) MOLEX RECOMMENDS THE USE OF MICRO-FIT TEST PLUG (SERIES 44242) WHENEVER CONTINUITY TESTING IS PERFORMED. TEST PLUGS MUST NOT BE USED TO MAKE OR BREAK UNDER LOAD. MOLEX DOES NOT RECOMMEND USING STANDARD MATING COMPONENTS (SERIES 43020, 43045, 43640, 43650, OR 43031) FOR HARNESS TESTING PURPOSES.
- 9) PART NUMBER 45807-0003 IS DESIGNED FOR 18 AWG 1061 STYLE WIRE OR A .073/1.85 MAXIMUM INSULATION OUTSIDE DIAMETER.



UPDATE LOCK TAB EC NO: UCP2016-4894 DRW:CSLAFTER 2017/03/01 CHKD:SSOUSEK 2017/03/01 APPR:FSMITH 2017/03/14	QUALITY SYMBOLS ▽=0 ▽=0 ▽=0	GENERAL TOLERANCES (UNLESS SPECIFIED)		DIMENSION STYLE IN/MM		SCALE 10:1	DESIGN UNITS METRIC	THIRD ANGLE PROJECTION	
		4 PLACES ± --- ± ---	3 PLACES ± --- ± .010	2 PLACES ± 0.25 ± .014	1 PLACE ± 0.35 ± ---	0 PLACE ± ±	DRAWN BY DATE NNGUYEN 2015/07/13		CHECKED BY DATE SSOUSEK 2015/07/13
2	DESCRIPTION	ANGULAR ±1/2°		MATERIAL NO.		APPROVED BY DATE FSMITH 2016/06/08		DOCUMENT NO.	
DRAFT WHERE APPLICABLE MUST REMAIN WITHIN DIMENSIONS		SEE CHART		SD-45807-001		SHEET NO. 1 OF 1			
THIS DRAWING CONTAINS INFORMATION THAT IS PROPRIETARY TO MOLEX INCORPORATED AND SHOULD NOT BE USED WITHOUT WRITTEN PERMISSION									