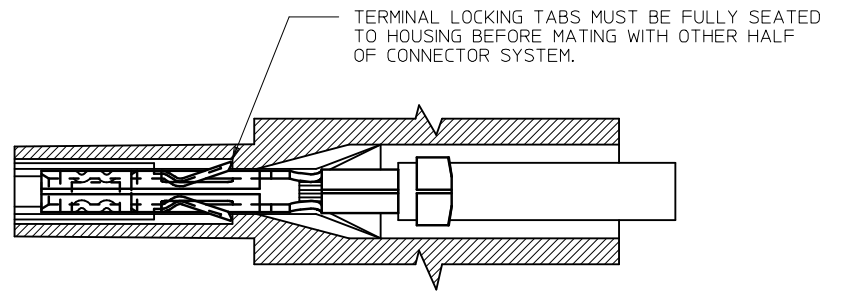
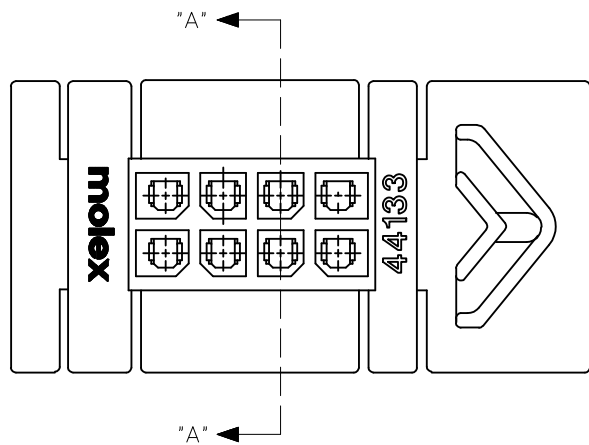


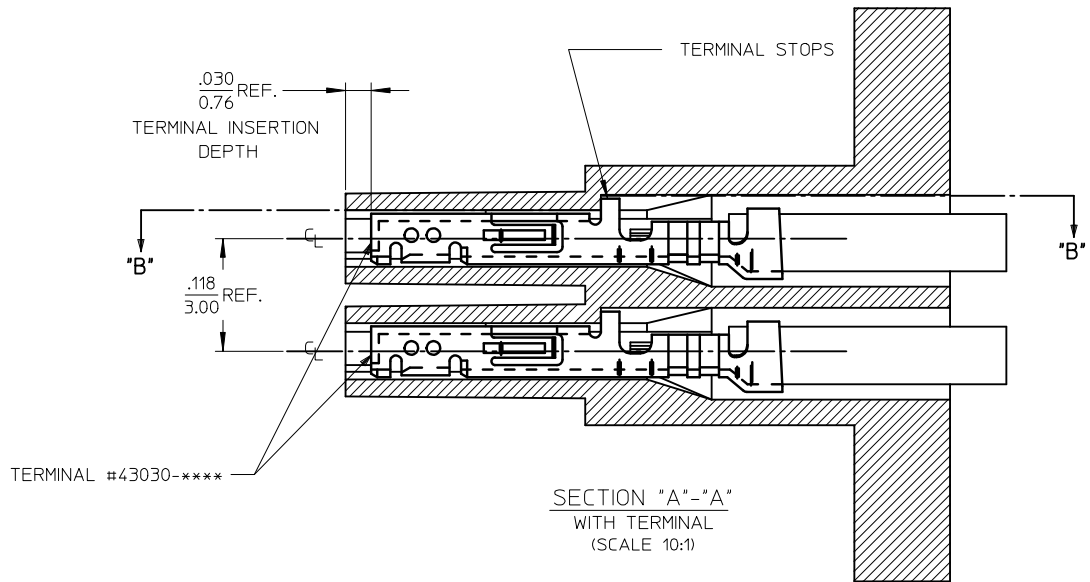
- NOTES:
1. MATERIAL: UNFILLED NYLON, UL94V-0, COLOR: BLACK
 2. FINISH: N/A
 3. PRODUCT SPECIFICATION: PS-44300-001
 4. PACKAGING SPECIFICATION: TRAY PACKED PER PK-44133-002
 5. THIS RECEPTACLE MATES WITH MOLEX BMI PLUG 44300, MOLEX BMI VERTICAL PCB HEADER 44432, MOLEX BMI RIGHT ANGLE PCB HEADER 44428, & MOLEX BMI CPI VERTICAL PCB HEADER 45280.
 6. THIS RECEPTACLE TO BE USED WITH MOLEX FEMALE CRIMP TERMINALS ONLY (SERIES 43030, 45773, OR 46235). SEE SECTION "A"- "A" FOR TERMINAL ORIENTATION IN HOUSING.
 7. THIS RECEPTACLE IS DESIGNED FOR USE WITH .060/1.52 MAX. TO .050/1.27 MINIMUM THICK PANELS.
 8. DIMENSIONS GIVEN ACROSS CENTERLINES ARE SYMMETRICAL ABOUT THOSE CENTERLINES WITHIN THE TOTAL TOLERANCE.
 9. WHEN MATING WITH 44300 SERIES, THE PANEL CUT-OUT CENTERLINES OF DIM "H" AND .385/9.78 MUST ALIGN WITH POINT "M" DEFINED BY MOLEX DRAWING SD-44300-001.
 10. MOLEX RECOMMENDS THE USE OF MICRO-FIT TEST PLUG (SERIES 44242) WHENEVER CONTINUITY TESTING IS PERFORMED. TEST PLUGS MUST NOT BE USED TO MAKE OR BREAK UNDER LOAD. MOLEX DOES NOT RECOMMEND USING STANDARD MATING COMPONENTS (SERIES 44428, 44432, 44300 OR 45280) FOR HARNESS TESTING PURPOSES.
 11. HOUSINGS MAY EXHIBIT A SURFACE IMPERFECTION KNOWN AS "SINK MARKS" UP TO .024/(0.60) MAX. THIS IS A COSMETIC DEFECT AND DOES NOT AFFECT FUNCTION OF THE CONNECTOR.
 12. THIS PART CONFORMS TO CLASS 'B' REQUIREMENTS OF COSMETIC SPECIFICATION PS-45499-002.

CKT. SIZE	MATERIAL NUMBER	DIM "A"	DIM "B"	DIM "G"	DIM "H"
04	44133-0408	.97 24.6	.118 3.00	.530 13.46	.870 22.10
06	44133-0608	1.09 27.7	.236 6.00	.648 16.46	.988 25.10
08	44133-0808	1.21 30.7	.354 9.00	.766 19.46	1.106 28.10
10	44133-1008	1.33 33.8	.472 12.00	.884 22.46	1.224 31.10
12	44133-1208	1.45 36.8	.591 15.00	1.002 25.46	1.343 34.10
14	44133-1408	1.57 39.9	.709 18.00	1.120 28.46	1.461 37.10
16	44133-1608	1.69 42.9	.827 21.00	1.239 31.46	1.579 40.10
18	44133-1808	1.81 46.0	.945 24.00	1.357 34.46	1.697 43.10
20		1.93 49.0	1.063 27.00	1.475 37.46	1.815 46.10
22		2.04 51.8	1.181 30.00	1.593 40.46	1.933 49.10
24		2.16 54.9	1.299 33.00	1.711 43.46	2.051 52.10

FIX DIMENSION (G-7) EC NO: UCP2012-3877 DRAWN: MSTR0H 2012/06/01 CHKD: SSOUSEK 2012/06/08 APPR: FSMITH 2012/12/19	QUALITY SYMBOLS	GENERAL TOLERANCES (UNLESS SPECIFIED)	DIMENSION STYLE	SCALE	DESIGN UNITS	THIRD ANGLE PROJECTION
	▽=0	mm INCH	IN/MM	---	METRIC	
	▽=0	4 PLACES ± --- ± ---	DRAWN BY DATE	TITLE		
	▽=0	3 PLACES ± --- ± .010	GAVERRILL 2008/07/02	MICRO-FIT (3.0) BMI FLOATING PANEL RECEPTACLE, HALOGEN-FREE		
▽=0	2 PLACES ± 0.25 ± .014	CHECKED BY DATE	molex			
	1 PLACE ± 0.35 ± ---	SSOUSEK 2008/07/09	DOCUMENT NO. SD-44133-003			
	0 PLACE ± --- ± ---	APPROVED BY DATE	SHEET NO. 1 OF 2			
		FSMITH 2008/07/16	THIS DRAWING CONTAINS INFORMATION THAT IS PROPRIETARY TO MOLEX INCORPORATED AND SHOULD NOT BE USED WITHOUT WRITTEN PERMISSION			



SECTION "B"-B"
(SCALE 10:1)



SECTION "A"-A"
WITH TERMINAL
(SCALE 10:1)

INITIAL RELEASE EC NO: UCP2009-1371 DRAWN:SSOUSEK 2008/11/26 CHKD:MKIPPER 2008/12/02 APPR:FSMITH 2008/12/02	QUALITY SYMBOLS ▽=0 ▽=0	GENERAL TOLERANCES (UNLESS SPECIFIED)		DIMENSION STYLE IN/MM		SCALE ---	DESIGN UNITS METRIC	THIRD ANGLE PROJECTION
		4 PLACES ± --- ± ---	DRAWN BY SSOUSEK	DATE 2008/11/24	TITLE MICRO-FIT (3.0) BMI FLOATING PANEL RECEPTACLE, HALOGEN-FREE			
		3 PLACES ± --- ± .010	CHECKED BY MKIPPER	DATE 2008/11/25	MOLEX INCORPORATED			
		2 PLACES ± 0.25 ± .014 1 PLACE ± 0.35 ± --- ANGULAR ±1/2°	APPROVED BY FSMITH	DATE 2008/11/26	MATERIAL NO. SEE CHART	DOCUMENT NO. SD-44133-003	SHEET NO. 2 OF 2	
DRAFT WHERE APPLICABLE MUST REMAIN WITHIN DIMENSIONS		THIS DRAWING CONTAINS INFORMATION THAT IS PROPRIETARY TO MOLEX INCORPORATED AND SHOULD NOT BE USED WITHOUT WRITTEN PERMISSION						