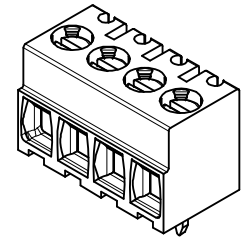
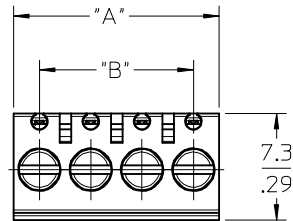
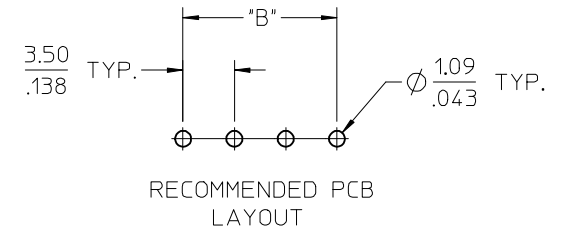
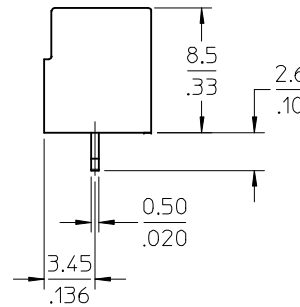
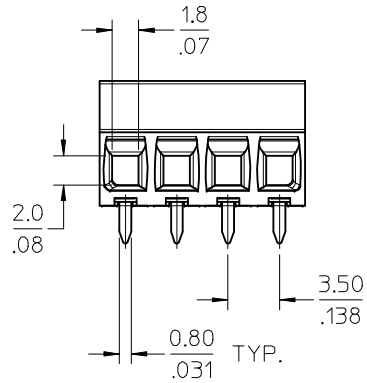


# OF CIRC. "XX"	DIM. "A"	DIM. "B"	MATERIAL NUMBER
02	7.0/.28	3.50/.138	393570202
03	10.5/.41	7.00/.276	393570203
04	14.0/.55	10.50/.413	393570204
05	17.5/.69	14.00/.551	X
06	21.0/.83	17.50/.689	393570206



AUX. VIEW
(4 CIRCUIT SHOWN)

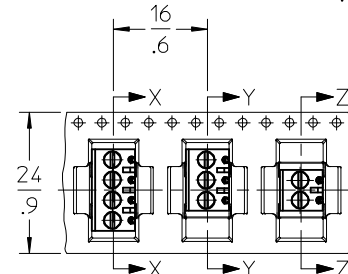
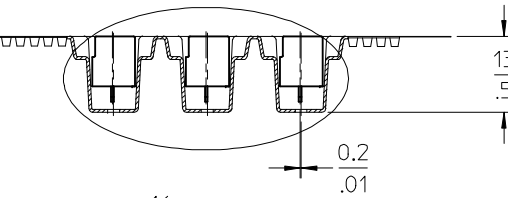
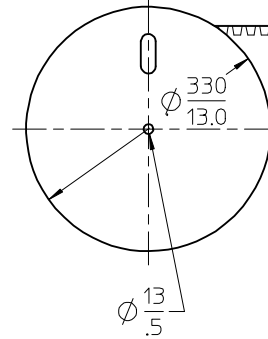
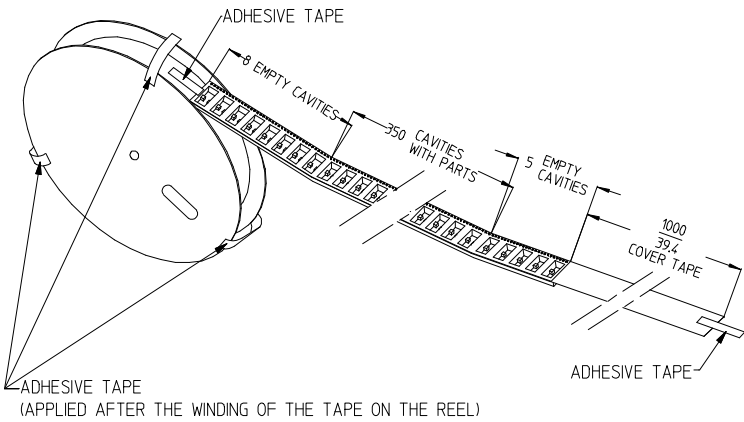


NOTES:

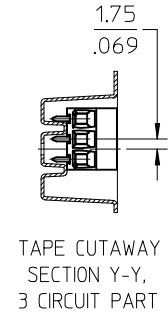
1. MATERIAL: SEE TABLE.
2. FINISH: SEE TABLE.
3. PACKAGING: 350 PIECES PER REEL, SEE SHEET 2.
4. "XX" REFERS TO THE QUANTITY OF CIRCUITS.
5. ASSEMBLY IS ROHS COMPLIANT.

4	XX	SCREW, M2	COPPER ALLOY	NICKEL PLATE
3	XX	CLAMP, RISING, WIRE PRESSURE	COPPER ALLOY	NICKEL PLATE
2	XX	TERMINAL, PC	COPPER ALLOY	TIN PLATE
1	1	INSULATOR, SINGLE ROW	PA 46, UL94V-0	BLACK
ITEM	QTY.	DESCRIPTION	MATERIAL	FINISH

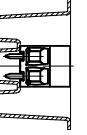
INITIAL RELEASE EC NO: WNA2009-0187 DRAWN: C. YORK 2008/09/12 CHKD: R. DEROSS 2008/09/12 APPR: R. DEROSS 2008/09/15 A	QUALITY SYMBOLS ▽=0 ▽=0	GENERAL TOLERANCES (UNLESS SPECIFIED)		DIMENSION STYLE MM/IN	SCALE 3:1	DESIGN UNITS INCH	THIRD ANGLE PROJECTION	
		4 PLACES ± --- ± --- 3 PLACES ± --- ± .005 2 PLACES ± 0.13 ± .01 1 PLACE ± 0.25 ± ---	DRAWN BY C. YORK	DATE 2007/08/14	TITLE 3.50/138 EUROSTYLE LOW, SINGLE ROW FIXED, HIGH TEMP. ON TAPE & REEL			
		ANGULAR ± 2 °	CHECKED BY R. DEROSS	DATE 2007/08/14	MOLEX INCORPORATED			
		DRAFT WHERE APPLICABLE MUST REMAIN WITHIN DIMENSIONS	APPROVED BY R. DEROSS	DATE 2007/08/14	MATERIAL NO. SEE CHART	DOCUMENT NO. SD-39357-002	SHEET NO. 1 OF 2	



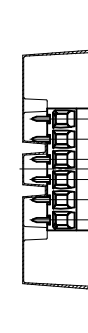
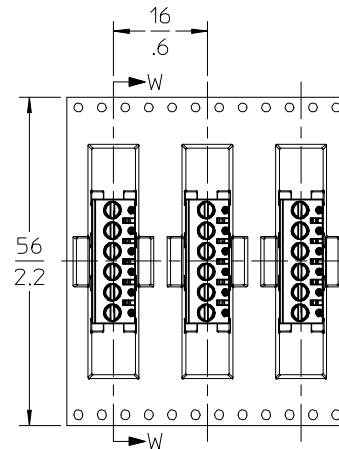
TAPE CUTAWAY SECTION X-X, 4 CIRCUIT PART



TAPE CUTAWAY SECTION Y-Y, 3 CIRCUIT PART



TAPE CUTAWAY SECTION Z-Z, 2 CIRCUIT PART



TAPE CUTAWAY SECTION W-W, 6 CIRCUIT PART

SEE SHEET ONE EC NO: WINA2009-0187 DRAWN BY: C. YORK CHKD: RDEROSS APPR: RDEROSS	DESCRIPTION 2008/09/12 2008/09/12 2008/09/15	QUALITY SYMBOLS	GENERAL TOLERANCES (UNLESS SPECIFIED)	DIMENSION STYLE	SCALE	DESIGN UNITS	THIRD ANGLE PROJECTION		
		$\nabla=0$ $\nabla=0$	mm INCH 4 PLACES ± --- ± --- 3 PLACES ± --- ± .005 2 PLACES ± 0.13 ± .01 1 PLACE ± 0.25 ± --- ANGULAR ± 2°	MM/IN	1:1	INCH	DRAWN BY DATE C. YORK 2007/08/14 CHECKED BY DATE R. DEROSS 2007/08/14 APPROVED BY DATE R. DEROSS 2007/08/14 MATERIAL NO.	TITLE 3.50/138 EUROSTYLE LOW, SINGLE ROW FIXED, HIGH TEMP. ON TAPE & REEL MOLEX MOLEX INCORPORATED DOCUMENT NO. SD-39357-002	SHEET NO. 2 OF 2
		DRAFT WHERE APPLICABLE MUST REMAIN WITHIN DIMENSIONS		SEE SHT. 1	THIS DRAWING CONTAINS INFORMATION THAT IS PROPRIETARY TO MOLEX INCORPORATED AND SHOULD NOT BE USED WITHOUT WRITTEN PERMISSION				
		REV A							