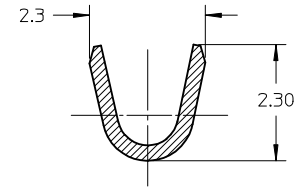
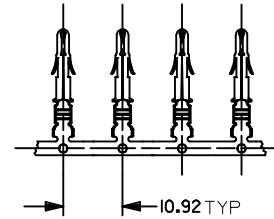


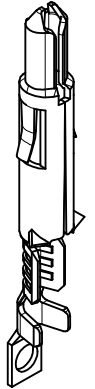
SECTION Z-Z  
CONDUCTOR CRIMP AREA  
SCALE 10:1



SECTION Y-Y  
INSULATOR CRIMP AREA  
SCALE 10:1



TERMINALS IN CHAIN FORM

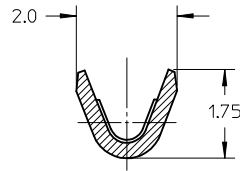
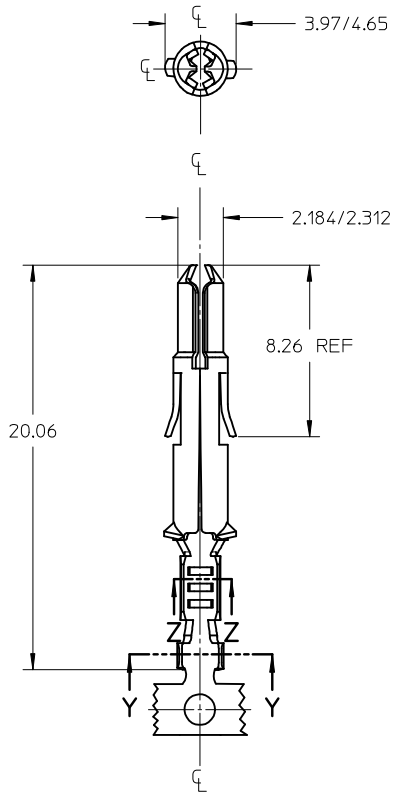


SPLIT PIN TERMINAL

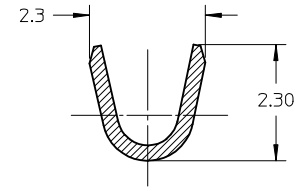
- NOTES:
- PIN TERMINALS FOR USE WITH 2.13 DIA SERIES HOUSINGS:  
PLUG(42021-\*\*) CAP (42022-\*\*)
  - PIN TERMINALS MATE WITH 42024 SOCKET TERMINALS 2.13 DIA SERIES
  - TERMINALS FINISHED IN CHAIN FORM
  - MATERIAL: 0.30 THICK STRIP:  
A= BRASS, #C26000 PER SMES-124-E7  
B= PHOSPHOR BRONZE, #C51000 PER SMES-124-E7
  - FINISH:  
HOT TIN DIP 20 m.l/0.51 microns MIN PER SDES-88-P901
  - WIRE RANGE: 22-24AWG COVERS UL 1015, UL 1007
  - PRODUCT SPECIFICATION: PS-42022-0001

PART NO	FINISH	MATERIAL	WIRE SIZE	INSULATION DIA RANGE
42023-2015	ES-88-P901	C26000	22-24 AWG	1.2-1.8 MM
42023-2016	ES-88-P901	C51000	22-24 AWG	1.2-1.8 MM

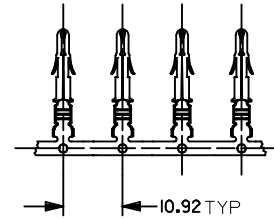
NOTES UPDATED EC NO: I2014-0044 DRWN:SS06 CHKD: APPR: ISHWARG 2013/11/08 2013/12/02	DESCRIPTION REV	QUALITY SYMBOLS	GENERAL TOLERANCES (UNLESS SPECIFIED)	DIMENSION STYLE MM ONLY	SCALE 4:1	DESIGN UNITS METRIC	THIRD ANGLE PROJECTION																			
		$F_A=0$ $F_G=0$ $F_P=0$	<table border="1"> <thead> <tr> <th></th> <th>mm</th> <th>INCH</th> </tr> </thead> <tbody> <tr> <td>4 PLACES</td> <td>± ---</td> <td>± ---</td> </tr> <tr> <td>3 PLACES</td> <td>± ---</td> <td>± ---</td> </tr> <tr> <td>2 PLACES</td> <td>± 0.25</td> <td>± ---</td> </tr> <tr> <td>1 PLACE</td> <td>± 0.38</td> <td>± ---</td> </tr> <tr> <td>0 PLACE</td> <td>± ---</td> <td>± ---</td> </tr> </tbody> </table>		mm	INCH	4 PLACES	± ---	± ---	3 PLACES	± ---	± ---	2 PLACES	± 0.25	± ---	1 PLACE	± 0.38	± ---	0 PLACE	± ---	± ---	DRAWN BY: SS06 DATE: 2013/10/29 CHECKED BY: DATE: APPROVED BY: ISHWARG DATE: 2013/11/06 MATERIAL NO.: SEE TABLE	TITLE MLX TERMINAL SPLIT PIN, 22-24 AWG, 2.13 DIA SERIES		DOCUMENT NO. SD-42023-002	SHEET NO. 1 OF 1
			mm	INCH																						
		4 PLACES	± ---	± ---																						
3 PLACES	± ---	± ---																								
2 PLACES	± 0.25	± ---																								
1 PLACE	± 0.38	± ---																								
0 PLACE	± ---	± ---																								
ANGULAR ± 1 °		SIZE A3	THIS DRAWING CONTAINS INFORMATION THAT IS PROPRIETARY TO MOLEX INCORPORATED AND SHOULD NOT BE USED WITHOUT WRITTEN PERMISSION																							
DRAFT WHERE APPLICABLE MUST REMAIN WITHIN DIMENSIONS																										



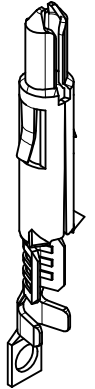
SECTION Z-Z  
CONDUCTOR CRIMP AREA  
SCALE 10:1



SECTION Y-Y  
INSULATOR CRIMP AREA  
SCALE 10:1



TERMINALS IN CHAIN FORM



SPLIT PIN TERMINAL

- NOTES:
- PIN TERMINALS FOR USE WITH 2.13 DIA SERIES HOUSINGS:  
PLUG(42021-\*\*) CAP (42022-\*\*)
  - PIN TERMINALS MATE WITH 42024 SOCKET TERMINALS 2.13 DIA SERIES
  - TERMINALS FINISHED IN CHAIN FORM
  - MATERIAL: 0.30 THICK STRIP:  
A= BRASS, #C26000 PER SMES-124-E7  
B= PHOSPHOR BRONZE, #C51000 PER SMES-124-E7
  - FINISH:  
HOT TIN DIP 20 m.l/0.51 microns MIN PER SDES-88-P901
  - WIRE RANGE: 22-24AWG COVERS UL 1015, UL 1007
  - PRODUCT SPECIFICATION: PS-42022-0001

PART NO	FINISH	MATERIAL	WIRE SIZE	INSULATION DIA RANGE
42023-2015	ES-88-P901	C26000	22-24 AWG	1.2-1.8 MM
42023-2016	ES-88-P901	C51000	22-24 AWG	1.2-1.8 MM

NOTES UPDATED EC NO: I2014-0044 DRWN:SS06 CHKD: APPR: ISHWARG 2013/11/08 2013/12/02	DESCRIPTION REV	QUALITY SYMBOLS	GENERAL TOLERANCES (UNLESS SPECIFIED)	DIMENSION STYLE MM ONLY	SCALE 4:1	DESIGN UNITS METRIC	THIRD ANGLE PROJECTION																			
		$F_A=0$ $F_G=0$ $F_P=0$	<table border="1"> <tr> <th></th> <th>mm</th> <th>INCH</th> </tr> <tr> <td>4 PLACES</td> <td>± ---</td> <td>± ---</td> </tr> <tr> <td>3 PLACES</td> <td>± ---</td> <td>± ---</td> </tr> <tr> <td>2 PLACES</td> <td>± 0.25</td> <td>± ---</td> </tr> <tr> <td>1 PLACE</td> <td>± 0.38</td> <td>± ---</td> </tr> <tr> <td>0 PLACE</td> <td>± ---</td> <td>± ---</td> </tr> </table>		mm	INCH	4 PLACES	± ---	± ---	3 PLACES	± ---	± ---	2 PLACES	± 0.25	± ---	1 PLACE	± 0.38	± ---	0 PLACE	± ---	± ---	DRAWN BY: SS06 DATE: 2013/10/29 CHECKED BY: DATE: APPROVED BY: ISHWARG DATE: 2013/11/06 MATERIAL NO.: SEE TABLE	TITLE MLX TERMINAL SPLIT PIN, 22-24 AWG, 2.13 DIA SERIES		DOCUMENT NO. SD-42023-002	SHEET NO. 1 OF 1
			mm	INCH																						
		4 PLACES	± ---	± ---																						
3 PLACES	± ---	± ---																								
2 PLACES	± 0.25	± ---																								
1 PLACE	± 0.38	± ---																								
0 PLACE	± ---	± ---																								
DRAFT WHERE APPLICABLE MUST REMAIN WITHIN DIMENSIONS		ANGULAR ± 1 °	THIS DRAWING CONTAINS INFORMATION THAT IS PROPRIETARY TO MOLEX INCORPORATED AND SHOULD NOT BE USED WITHOUT WRITTEN PERMISSION																							
		SIZE A3																								