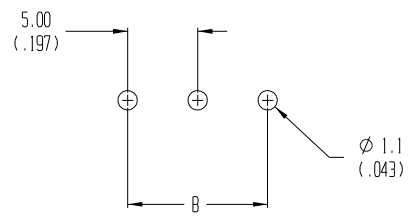


MATERIAL NO.	NO. OF CIRCUITS	ENG. NO. (BEAU. NO.)	DIM. "B"	
	"XX"		IN.	MM
39890-0302	02	890102	.20	5.0
39890-0303	03	890103	.39	10.0
39890-0304	04	890104	.59	15.0
39890-0305	05	890105	.79	20.0
39890-0306	06	890106	.98	25.0
39890-0307	07	890107	1.18	30.0
39890-0308	08	890108	1.38	35.0
39890-0309	09	890109	1.58	40.0
39890-0310	10	890110	1.77	45.0
39890-0311	11	890111	1.97	50.0
39890-0312	12	890112	2.17	55.0
39890-0313	13	890113	2.36	60.0
39890-0314	14	890114	2.56	65.0
39890-0315	15	890115	2.76	70.0
39890-0316	16	890116	2.95	75.0
39890-0317	17	890117	3.15	80.0
39890-0318	18	890118	3.35	85.0
39890-0319	19	890119	3.54	90.0
39890-0320	20	890120	3.74	95.0
39890-0321	21	890121	3.94	100.0
39890-0322	22	890122	4.13	105.0
39890-0323	23	890123	4.33	110.0
39890-0324	24	890124	4.53	115.0
39890-0325	25	890125	4.72	120.0



ITEM	QTY.	DESCRIPTION	MATERIAL	FINISH
4	XX	SCREW, M3	COPPER	NICKEL
3	XX	CAGE CLAMP	COPPER	NICKEL
2	XX	TERMINAL, PC	COPPER	HOT TIN DIP
1	1	INSULATOR	POLYAMIDE	BLACK

EC NO. 3846  
 ECNR# 3846  
 DRWN: CY  
 CH'K: 09-02-04  
 APPR:

QUALITY SYMBOLS	GENERAL TOLERANCES: (UNLESS SPECIFIED)	SCALE	DESIGN UNITS	THIRD ANGLE PROJECTION
MAJOR =	mm INCH	3:1	mm INCH	<input checked="" type="checkbox"/> mm <input type="checkbox"/> INCH
CRITICAL =	4 PLACES ±.038 ±.0015	DRAWN BY & DATE	R. KEMP 5-14-02	TITLE: 5.00mm EUROSTYLE LOW, SINGLE ROW FIXED BLOCK
S =	3 PLACES ±.13 ±.01	CHECKED BY & DATE	R. STONE 5-14-02	MOLEX INCORPORATED
	2 PLACES ±.13 ±.01	APPROVED BY & DATE	P. WALTZ 5-14-02	
	1 PLACE ±.3	CAD FILENAME	8901XX.PRT	MATERIAL NO. SEE CHART
	ANGULAR: ±2°	DRAWING NO.	SD-39890-003	SHEET NO. 1 OF 1
	DRAFT WHERE APPLICABLE MUST REMAIN WITHIN DIMENSIONS	THIS DRAWING CONTAINS INFORMATION THAT IS PROPRIETARY TO MOLEX INCORPORATED AND SHOULD NOT BE USED WITHOUT WRITTEN PERMISSION.		

PROJECT NO. 04-124	SHT	REV
DIMENSIONS:		
<input checked="" type="checkbox"/> mm <input type="checkbox"/> INCH		
<input type="checkbox"/> mm ONLY		
	REVISE ON	CAD ONLY

