

DO NOT SCALE

THIS DRAWING AND DESIGN HEREON CONSTITUTES A PROPRIETARY DESIGN OF PACKARD ELECTRIC DIVISION AND IS NOT TO BE DUPLICATED OR REPRODUCED WITHOUT AUTHORITY OF PACKARD ELECTRIC DIVISION

PART NO

2977042

D

BODY LOCKING SLOT

CLIP SLOT

CABLE END

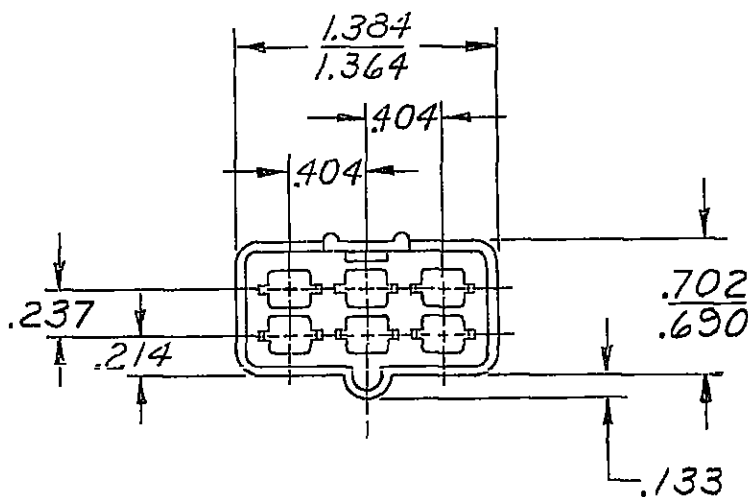
1.148
1.132

.360

ASM. DIMENSIONING POINT.

MATING END

INDEX KEYWAY



MATING END

C02D1637

NOTE - MATING CONN. 2977044 REF.

OUTLINE DWG.

| DATE | SYM | REVISION RECORD | C/N NO |
|---------|-----|---|--------|
| 4-30-63 | ∞ | OUTLINE DWG ISSUED TO SUPPLEMENT "D" SIZE DETAIL DWG. | 12032 |
| 3-27-72 | ∞ | REF. WAS 2977042 "D" ASSEMBLY DIM. POINT RELOCATED. | 16026 |

CODE NO 6900 TOLERANCE UNLESS OTHERWISE SPECIFIED
 DECIMAL ± .005
 FRACTIONAL ±
 ANGULAR ±

DWG DATE 5-2-63 SCALE NONE DR. THIRY

ROUTING DEPT OUTST CK *Let 5-3* APPR

REFERENCE 8911518 "E" SIZE APPR *R.P. Kirk 5-4*

MATERIAL SPEC POLYPROPYLENE (NAT.) CODE NO

NAME CONN. BODY - '56 SERIES 6 MALE TERMINALS

PART NO 2977042 SIZE A

PACKARD ELECTRIC DIVISION
 GENERAL MOTORS CORPORATION
 WARREN, OHIO
 304 199
 99
 FB-A
 PONT
 16A
 TR-V
 FEB-A
 AM-P