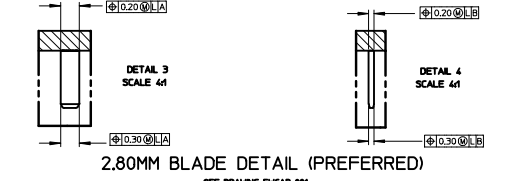
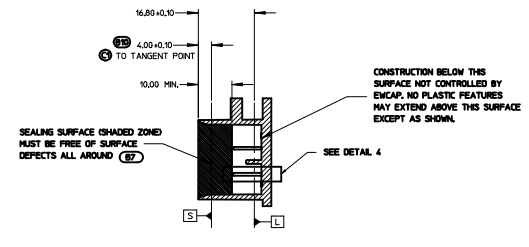
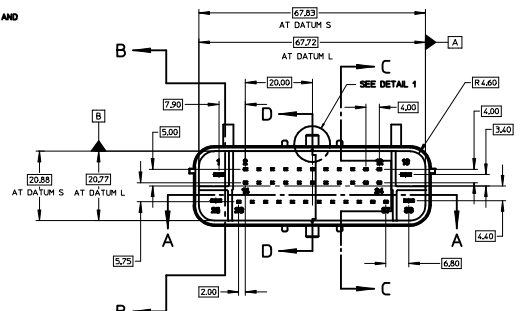
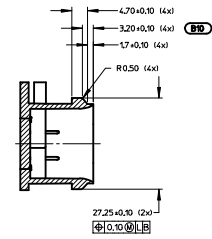
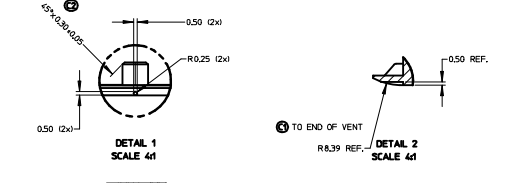
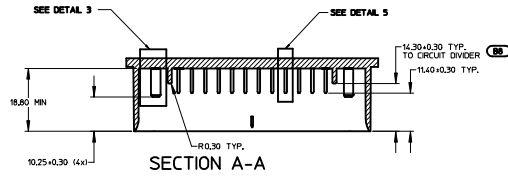
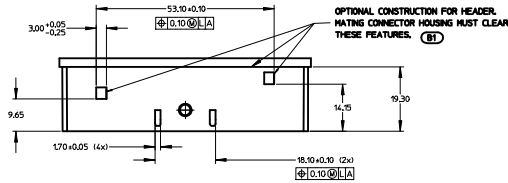
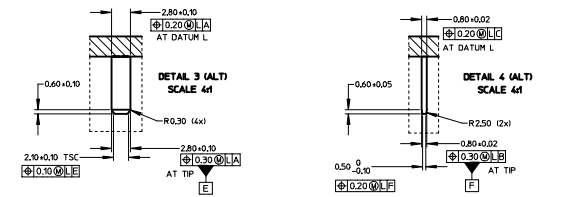


NOTES:

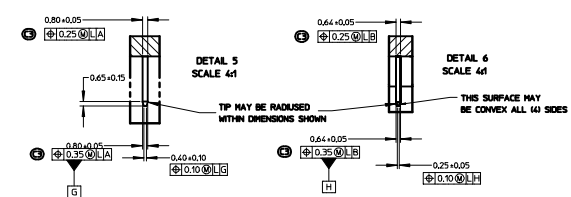
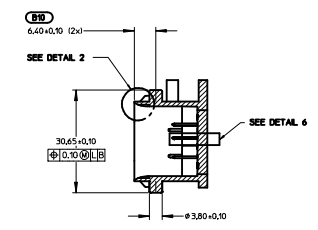
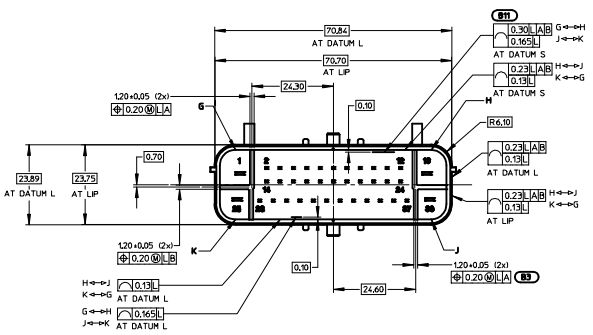
1. ALL DIMENSIONS SHOWN IN MILLIMETERS.
2. DIMENSIONING AND TOLERANCING PER ASME Y14.5-1994.
3. RADI ON ALL CORNERS SHOWN SHARP OR ALL UNSPECIFIED RADIUS EXCEPT AS NOTED.
4. REFER TO "SAE/ASCAR-12 CONNECTOR DESIGN GUIDELINES" FOR ADDITIONAL INFORMATION.
5. 0.25 DEGREE DRAFT ON ALL INSIDE SURFACES, UNLESS OTHERWISE SPECIFIED.
6. STANDARD COLORS FOR POLARIZATION - DEVIATION REQUIRES APPROVAL OF AUTHORIZED PERSON.
7. REFER TO DRAWING ENCAP-001 FOR TERMINAL GEOMETRY AND PLATING DETAILS.



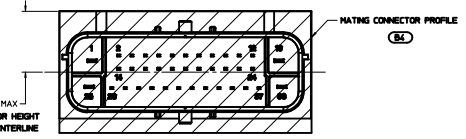
2.80MM BLADE DETAIL (PREFERRED)



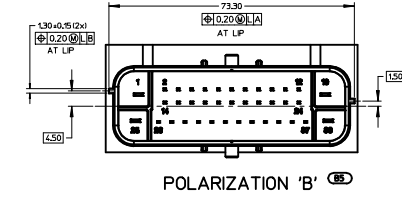
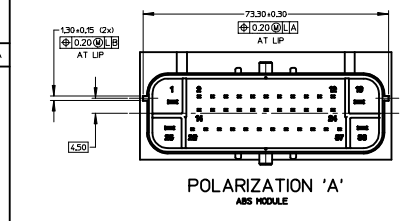
2.80MM BLADE DETAIL (ALTERNATE) (B7)



0.80X0.64MM BLADE DETAIL (B8)



999-S-038-C02	C	BROWN
999-S-038-B02	B	GRAY
999-S-038-A02	A	BLACK
USCAR PART NO.	OPTION	COLOR



TO BE DETERMINED POLARIZATION 'C'



REV	DESCRIPTION	DATE	BY	CHK
001	REVISE 0.64MM POS. 0.25 BASE/0.35 TIP ADDED CHAMFER DIMENSION 0.51±0.005 CLASSIFIED LOCATION OF TANGENT POINT	10/25/2004	MCD	BBW
002	INCREASED TOLERANCE ON LONG SIDES BYP DIMENSION FEATURES TO FRONT OF SHROUD REVISED GRAT ON 0.80X0.64 BLADE ADDED GRANT DIMENSION ADDED SEALING AREA DESCRIPTION REVISED ENCAP FROM TITLE BLOCK ADDED POLARIZATION 'B' ADDED MATING CONN. PROFILE CHANGED UNDER WALL TOLERANCE TO 0.20 ADDED OPTIONAL BLADE CONSTRUCTION ADDED STANDOFF DIM.	02/23/2005	MCD	BBW
003	RELEASED	08/02/2005	MCD	BBW
CHANGE NUMBER	LET	REVISION RECORD	DATE	DWN
TOLERANCES UNLESS OTHERWISE SPECIFIED		THIRD ANGLE PROJECTION		
DIMENSIONS ARE IN MILLIMETERS				
.X ±0.25		.XX ±0.13		
SCALE 1:1		DRAWN BY DANIEL S		
38 CIRCUIT ABS CONNECTOR INTERFACE - OPTION 6		CREATED BY WILSON		
DATE 08/08/2005		DATE 08/08/2005		
REV	DESCRIPTION	DATE	BY	CHK
1	999-S-038-3-202		E	

TABLE OF CONTENTS

SHEET NO.	SHEET DESCRIPTION
1	NOTES AND BOM
2	CONFIGURATIONS
3	RECEPTACLE CONNECTOR ASSEMBLY
4	WIRE SHIELD

MATING INTERFACE DRAWINGS

SERIES	INTERFACE DEFINITION
31380	*999-S-038-3-Z01
31381	*999-S-038-3-Z02

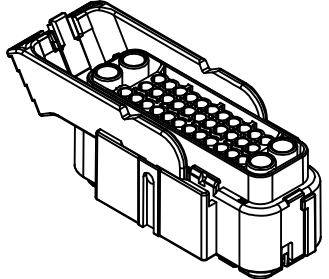
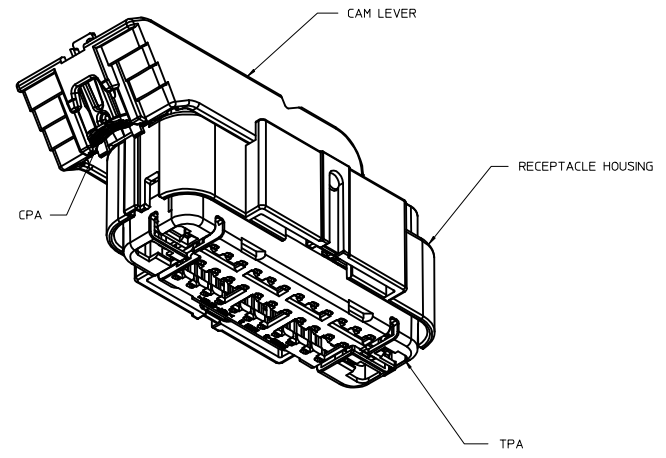
NOTES: VALID UNLESS OTHERWISE SPECIFIED
 1. CONNECTOR TO BE SHIPPED WITH TPA IN PRE-LOAD POSITION AS SHOWN IN SECTION Z-Z.

② 2. ALL TEXT TO BE CLEARLY LEGIBLE AND 1.50MM MIN. HEIGHT. MARKING ORIENTATION MAY BE PARALLEL TO THE LENGTH OF THE PART, AS SHOWN, OR PERPENDICULAR TO THE LENGTH OF THE PART.

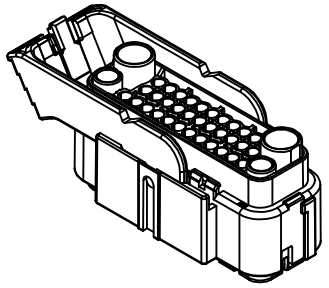
DATE CODE DESCRIPTION:
 -1st THROUGH 3rd DIGIT = "DAY#" OF THE CALENDAR YEAR. (EXAMPLE FEB, 3rd = '034')
 -LAST DIGIT = LAST DIGIT OF CALENDAR YEAR. (EXAMPLE: 2000 = '0')
 SERIAL NUMBER DESCRIPTION:
 -FIRST CHARACTER "M." = ASSEMBLY MACHINE NUMBER
 -FOLLOWING NUMBER STARTS AT "00001" AND IS RESET FOR EACH NEW "DAY#".
 MOLEX PART NUMBER:
 - SEE TABLE

3. DIMENSIONS NOT SHOWN CAN BE OBTAINED FROM THE ASSOCIATED MODEL.
 4. GENERAL:
 a. APPLICATION SPECIFICATION SEE: AS-31380-001
 -CONTAINS: PRODUCT INTRODUCTION, PRODUCT SUMMARY, HARNESS ASSEMBLY, CONNECTOR MATING, AND SERVICE INSTRUCTIONS.
 -DESIGNED TO MATE WITH DEVICE AS SPECIFIED IN THE MATING INTERFACE DRAWINGS CHART.
 *DENOTES DRAWINGS THAT CAN BE ACCESSED AT <http://ewcap.uscarteams.org/>.
 b. PRODUCT SPECIFICATION SEE: PS-31380-100
 CONTAINS: PRODUCT INTRODUCTION, PRODUCT SUMMARY, RATINGS (CURRENT AND TEMPERATURE), TERMINALS, WIRE DIAMETER RANGE, PRODUCT VALIDATION, AND PRODUCT DEVIATIONS.
 c. PACKAGING SPECIFICATION PER MOLEX DRAWING: PK-31300-550
 d. PARTS MUST BE IN COMPLIANCE TO MOLEX CHEMICAL SUBSTANCES FOR PRODUCTS AND PACKAGING SPECIFICATION: QEHS-699000-300
 e. DATA MUST BE SUBMITTED UNDER THE MOLEX PART NUMBER TO IMDS (COMPANY ID#13255)

5. DESIGN - MATERIALS:
 a. SEE BOM TABLE IN SD-31380-0002
 6. DESIGN - GEOMETRY:
 a. THE 3-D CAD DATA IS BASIC (WITHOUT TOLERANCE) AND MASTER FOR THIS PART WITH THE EXCEPTION OF UNDERLINED DIMENSIONS. DIMENSIONAL INFORMATION NOT SHOWN ON THIS DRAWING IS DEFINED BY THE DATA FILE AT ITS LATEST REVISION.
 b. GEOMETRIC DIMENSIONS AND TOLERANCES PER ASME Y14.5M-2009
 c. EDGES AND UNDIMENSIONED DETAILS PER ISO13715
 d. CORNERS SHOWN AS SHARP TO BE R 0.2 MAX.
 e. VISUAL DEFECTS SHALL MEET COSMETIC STANDARD PS-45499-002 (Class B).
 7. MUST BE USED WITH WIRE SHIELD - MOLEX PART NUMBER 31382-1001. WIRE SHIELD SHIPPED SEPARATELY.



31381 SERIES



31380 SERIES

INSPECTION NUMBER LOG	
LAST NUMBER: 2	A INITIAL RELEASE
ADDED:	
REMOVED:	

REVISION	DESCRIPTION	QUALITY SYMBOLS		GENERAL TOLERANCES (UNLESS SPECIFIED)		DIMENSION STYLE		DRAWN BY	DATE	CHECKED BY	DATE	APPROVED BY	DATE	MATERIAL NO.	DOCUMENT NO.	SHEET NO.
		mm	INCH	MM ONLY	SCALE	DESIGN UNITS	THIRD ANGLE PROJECTION									
1	ENTER DESCRIPTION	∇=0	∇=0	4 PLACES ±---	±---	MM ONLY	1.5:1	APPROFIT	2014/06/26			VKOSHY	2014/06/30	SEE NOTE 5a.	SD-31380-0001	1 OF 4
2	DRWN:APPROFIT	∇=0	∇=0	3 PLACES ±---	±---											
3	CHK:CRIZZI	∇=0	∇=0	2 PLACES ±0.13	±---											
4	APPR:VKOSHY	∇=0	∇=0	1 PLACE ±0.25	±---											
5		∇=0	∇=0	0 PLACE ±---	±---											
				ANGULAR ± 1°												
				DRAFT WHERE APPLICABLE MUST REMAIN WITHIN DIMENSIONS												

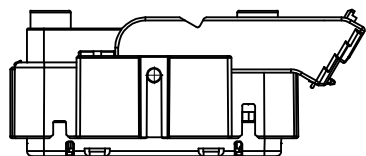
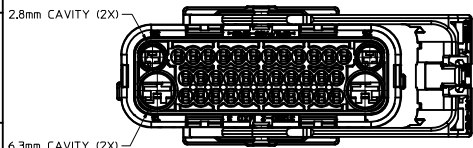
USCAR 38 WAY HYBRID RCPT SEALED ASSEMBLY



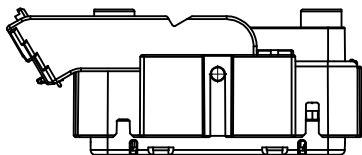
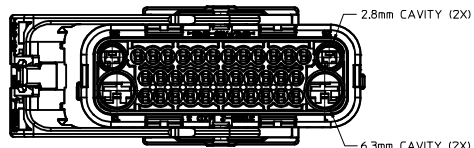
SD-31380-0001

SHEET DESCRIPTION

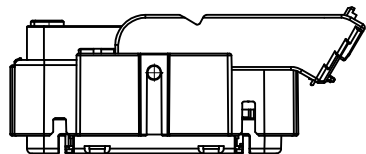
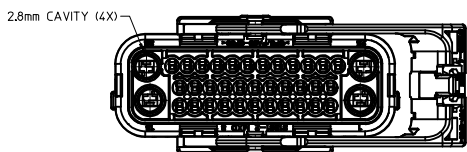
CONFIGURATIONS



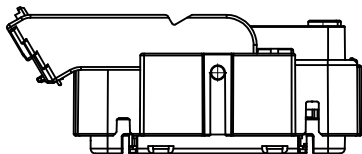
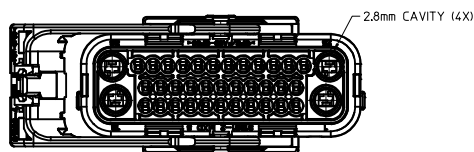
31380-10XX
TYPE II HARNESS ASSEMBLY
COUNTERCLOCKWISE LEVER THROW



31380-11XX
TYPE II HARNESS ASSEMBLY
CLOCKWISE LEVER THROW



31381-10XX
TYPE I HARNESS ASSEMBLY
COUNTERCLOCKWISE LEVER THROW



31381-11XX
TYPE I HARNESS ASSEMBLY
CLOCKWISE LEVER THROW

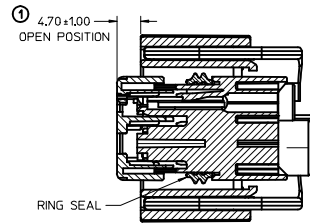
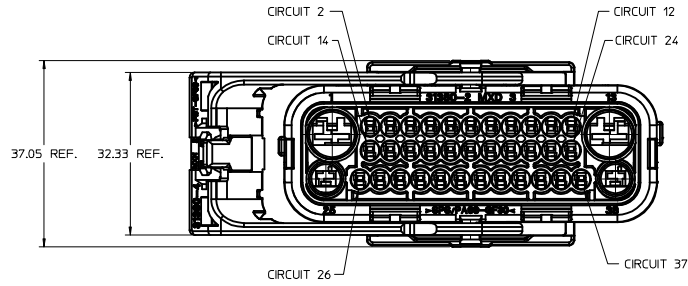
ENTER DESCRIPTION EDC NO: UAU2014-1972 DRAWN BY: APROFFITT 2014/06/26 CHECKED BY: CHYKORIZZI 2014/06/27 APPR: VKOSHY 2014/06/30 A	QUALITY SYMBOLS ▽=0 ▽=0 ▽=0	GENERAL TOLERANCES (UNLESS SPECIFIED) mm INCH 4 PLACES ± --- ± --- 3 PLACES ± --- ± --- 2 PLACES ± 0.13 ± --- 1 PLACE ± 0.25 ± --- 0 PLACE ± --- ± --- ANGULAR ± 1 ° DRAFT WHERE APPLICABLE MUST REMAIN WITHIN DIMENSIONS	DIMENSION STYLE MM ONLY DRAWN BY: APROFFITT DATE: 2014/06/26 CHECKED BY: DATE: APPROVED BY: VKOSHY DATE: 2014/06/30 MATERIAL NO.: SEE NOTE 5a. SIZE: 1 THIS DRAWING CONTAINS INFORMATION THAT IS PROPRIETARY TO MOLEX INCORPORATED AND SHOULD NOT BE USED WITHOUT WRITTEN PERMISSION	SCALE: 1.5:1 DESIGN UNITS: METRIC THIRD ANGLE PROJECTION	TITLE: USCAR 38 WAY HYBRID RCPT SEALED ASSEMBLY	DOCUMENT NO.: SD-31380-0001	SHEET NO.: 2 OF 4
	molex						
	THIS DRAWING CONTAINS INFORMATION THAT IS PROPRIETARY TO MOLEX INCORPORATED AND SHOULD NOT BE USED WITHOUT WRITTEN PERMISSION						
	SEE NOTE 5a.						

SHEET DESCRIPTION

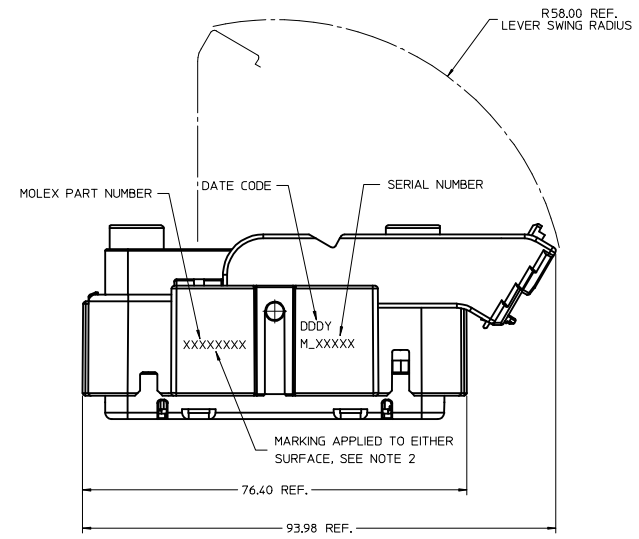
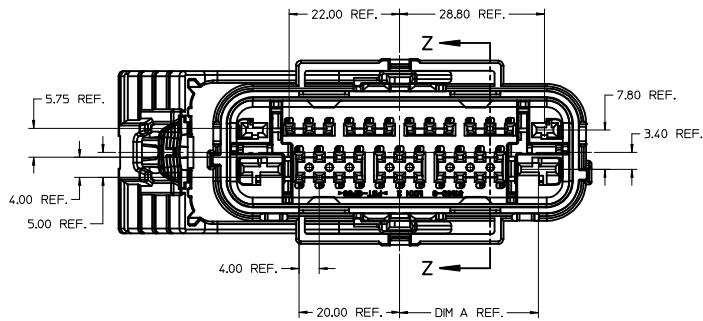
RECEPTACLE CONNECTOR ASSEMBLY

CHARTED DIMENSIONS

SERIES	DIMENSION
31380	A
31381	27.58
	27.90



SECTION Z-Z

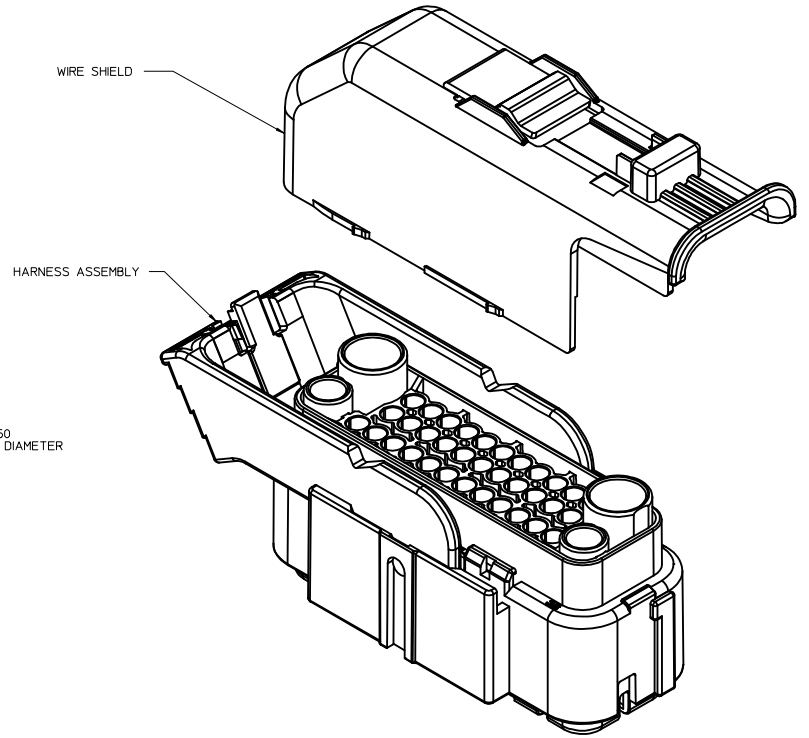
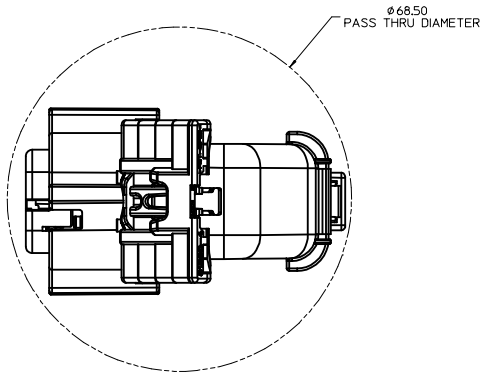
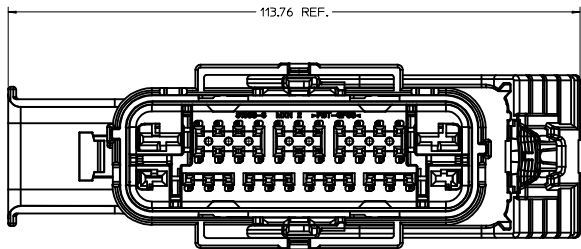


ENTER DESCRIPTION IEC NO: UAU2014-1972 DRAWN: APROFFITT 2014/06/26 CHKD: CRIZZI 2014/06/27 APPR: VKOSHY 2014/06/30	QUALITY SYMBOLS ∇=0 ∇=0 ∇=0	GENERAL TOLERANCES (UNLESS SPECIFIED)		DIMENSION STYLE MM ONLY		SCALE 2:1	DESIGN UNITS METRIC	THIRD ANGLE PROJECTION	
		4 PLACES ± --- ± ---	mm	INCH	DRAWN BY	DATE	TITLE USCAR 38 WAY HYBRID RCPT SEALED ASSEMBLY		
		3 PLACES ± --- ± ---			APPROVED BY	DATE	DOCUMENT NO. SD-31380-0001		
		2 PLACES ± 0.13 ± ---			CHECKED BY	DATE	SHEET NO. 3 OF 4		
1 PLACE ± 0.25 ± ---			MATERIAL NO. SEE NOTE 5a.		THIS DRAWING CONTAINS INFORMATION THAT IS PROPRIETARY TO MOLEX INCORPORATED AND SHOULD NOT BE USED WITHOUT WRITTEN PERMISSION				
0 PLACE ± --- ± ---			ANGULAR ± 1 °						
		DRAFT WHERE APPLICABLE MUST REMAIN WITHIN DIMENSIONS		SEE NOTE 5a.					

SHEET DESCRIPTION
WIRE SHIELD

WIRESHIELD NOTES: VALID UNLESS OTHERWISE SPECIFIED

1. GENERAL:
 a. APPLICATION SPECIFICATION SEE: AS-31380-001
 -WIRE SHIELD (MOLEX PART NUMBER 31382-1001) MUST BE USED WITH HARNESS ASSEMBLY
 -WIRE SHIELD SHIPPED SEPARATELY
 -FOR ADDITIONAL INFORMATION SEE THE WIRE SHIELD COMPONENT DRAWING SD-31382-100.



ENTER DESCRIPTION EC NO: UAU2014-1972 DRWNG: APROFIT 2014/06/26 CHKDR: IZZI 2014/06/27 APPR: VKOSHY 2014/06/30	QUALITY SYMBOLS ▽=0 ▽=0 ▽=0	GENERAL TOLERANCES (UNLESS SPECIFIED)		DIMENSION STYLE MM ONLY		SCALE 2.5:1	DESIGN UNITS METRIC	THIRD ANGLE PROJECTION
		4 PLACES ± --- ± --- 3 PLACES ± --- ± --- 2 PLACES ± 0.13 ± --- 1 PLACE ± 0.25 ± --- 0 PLACE ± --- ± ---	mm INCH	DRAWN BY APROFIT	DATE 2014/06/26	TITLE USCAR 38 WAY HYBRID RCPT SEALED ASSEMBLY		
		ANGULAR ± 1 °		APPROVED BY VKOSHY	DATE 2014/06/30	DOCUMENT NO. SD-31380-0001		
		DRAFT WHERE APPLICABLE MUST REMAIN WITHIN DIMENSIONS		SEE NOTE 5a.		SHEET NO. 4 OF 4		

