

10 9 8 7 6 5 4 3 2 1

F

E

D

C

B

A

F

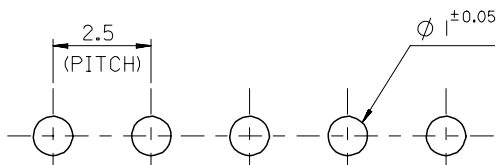
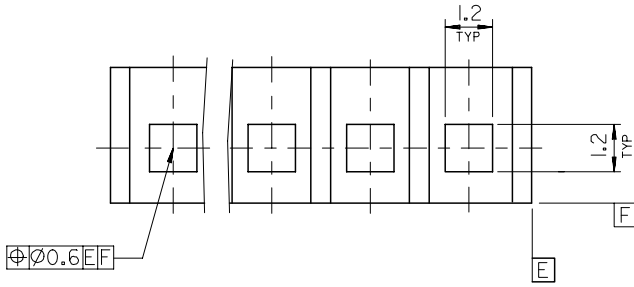
E

D

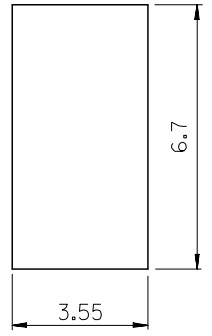
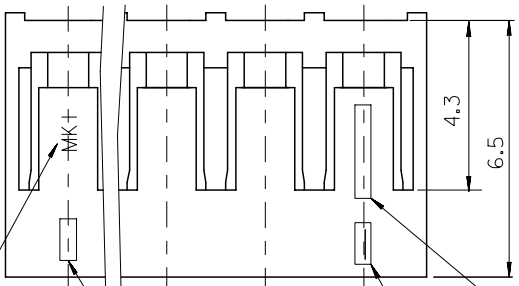
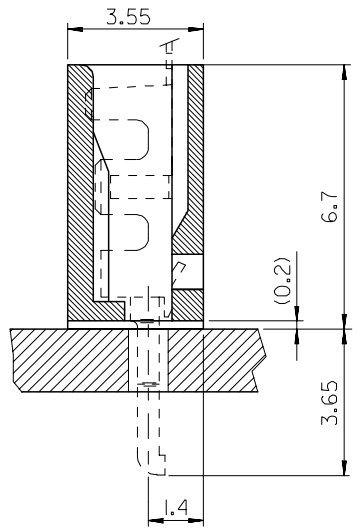
C

B

A



P.C.B LAYOUT (THICKNESS : 1.6)

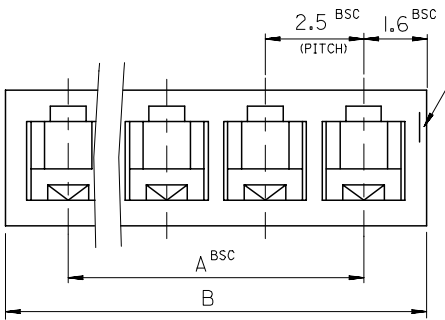


TRADE MARK (MK I)

CAVITY NO

ENG.NO (35164)

CIRCUIT NO. 1



NOTES

- 1. MATERIAL : NYLON66 UL94V-0
- 2. MATED WITH TERMINAL : 35047-9802

LEGEND

35164- ** 0 *
 COLOR : 0 --- NATURAL
 2 --- RED
 CKT (02 , 03 , 04)

38.2	35	35164 -150*	15
35.7	32.5	-140*	14
34.0	30	-130*	13
30.7	27.5	-120*	12
28.2	25	-110*	11
25.7	22.5	-100*	10
23.2	20	-090*	9
20.7	17.5	-080*	8
18.2	15	-070*	7
15.7	12.5	-060*	6
13.2	10	-050*	5
10.7	7.5	-040*	4
8.2	5.0	-030*	3
5.7	2.5	35164 -020*	2
B	A	ENG.NO	CKT

REVISED EC NO: KOR2008-0071 DRWN:HJEONG 2007/10/30 CHKD:YSOOKIM 2007/10/31 APPR:YUNSIKKIM 2007/10/31	QUALITY SYMBOLS	GENERAL TOLERANCES (UNLESS SPECIFIED)	DIMENSION STYLE	SCALE	DESIGN UNITS	THIRD ANGLE PROJECTION
	$\nabla=0$ $\nabla C=0$	mm INCH 4 PLACES \pm --- \pm --- 3 PLACES \pm --- \pm --- 2 PLACES \pm --- \pm --- 1 PLACE ± 0.3 \pm --- ANGULAR $\pm 2^\circ$	MM ONLY	8:1	METRIC	DRAWN BY DATE KSKIM 2001/10/25 CHECKED BY DATE JUNGKILOH 2001/10/25 APPROVED BY DATE CHANGWOOLE 2001/10/25
		DRAFT WHERE APPLICABLE MUST REMAIN WITHIN DIMENSIONS	SEE TABLE	TITLE		MOLEX INCORPORATED SD-35164-**-0*
				DOCUMENT NO.	SHEET NO.	MOLEX INCORPORATED SD-35164-**-0* 1 OF 1

9 8 7 6 5 4 3 2 1