

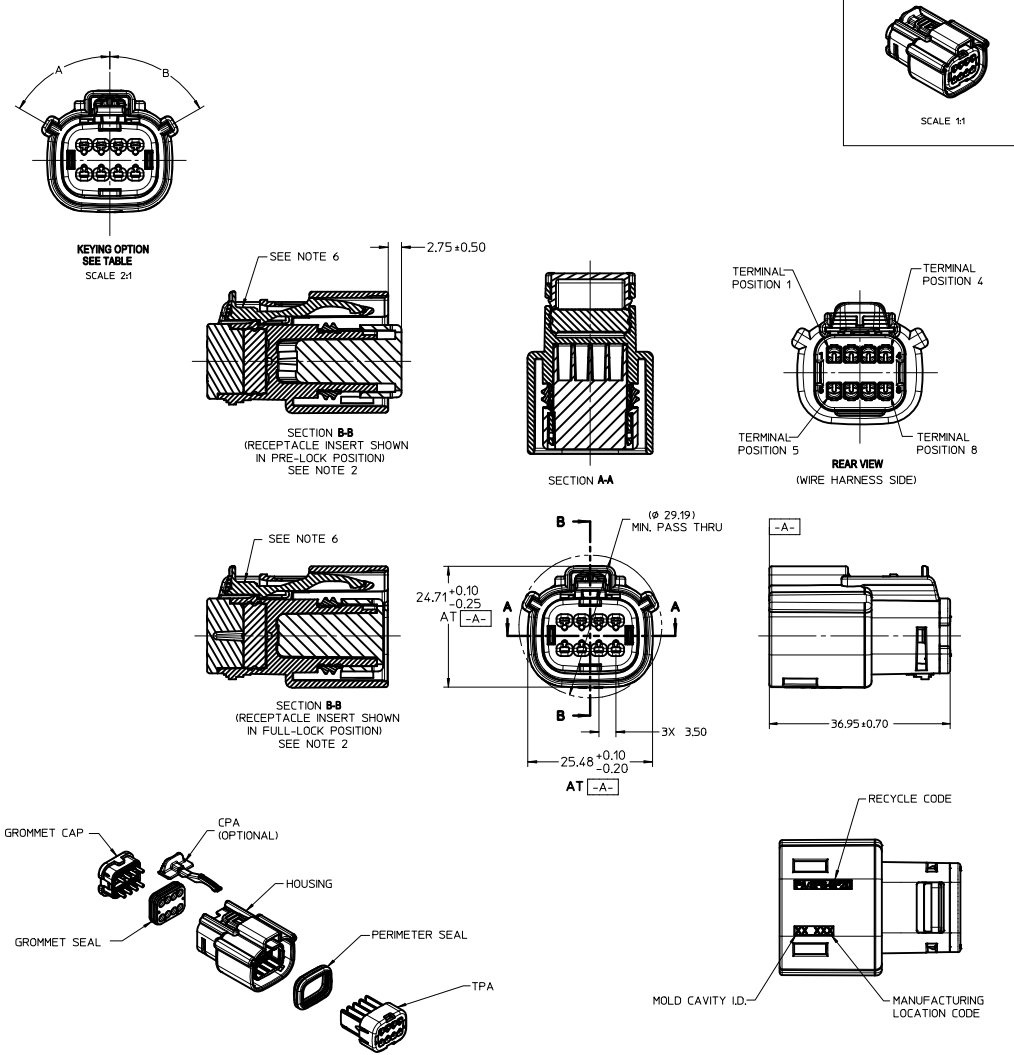


ASSEMBLY PART NUMBER	CPA	COLOR	KEYING OPTION	DIMENSIONS (DEGREES)		CAVITY TYPE & STATUS (X = PLUGGED)													
				A	B	1	2	3	4	5	6	7	8						
33472-0801	-	BLACK	A	60	60														
33472-0802	-	LT. GRAY	B	60	25														
33472-0803	-	BROWN	C	25	60														
33472-0804	-	GREEN	D	25	25														
33472-0805	-	BLACK	D	25	25														
33472-0806	YES	BLACK	A	60	60														
33472-0807	YES	LT. GRAY	B	60	25														
33472-0808	YES	BROWN	C	25	60														
33472-0809	YES	GREEN	D	25	25														
33472-0810	YES	CUSTOM	TBD																
33472-0811	-	BLACK	A	60	60							X							
33472-0812	-	LT. GRAY	B	60	25							X							
33472-0813	-	BROWN	C	25	60							X							
33472-0814	-	GREEN	D	25	25							X							
33472-0815	-	CUSTOM	TBD									X							
33472-0816	YES	BLACK	A	60	60							X							
33472-0817	YES	LT. GRAY	B	60	25							X							
33472-0818	YES	BROWN	C	25	60							X							
33472-0819	YES	GREEN	D	25	25							X							
33472-0820	YES	CUSTOM	TBD									X							
33472-0821	-	BLACK	A	60	60						X	X							
33472-0822	-	LT. GRAY	B	60	25						X	X							
33472-0823	-	BROWN	C	25	60						X	X							
33472-0824	-	GREEN	D	25	25						X	X							
33472-0825	-	CUSTOM	TBD								X	X							
33472-0826	YES	BLACK	A	60	60						X	X							
33472-0827	YES	LT. GRAY	B	60	25						X	X							
33472-0828	YES	BROWN	C	25	60						X	X							
33472-0829	YES	GREEN	D	25	25						X	X							
33472-0830	YES	CUSTOM	TBD								X	X							
33472-0831	-	BLACK	A	60	60	X				X	X								
33472-0832	-	LT. GRAY	B	60	25	X				X	X								
33472-0833	-	BROWN	C	25	60	X				X	X								
33472-0834	-	GREEN	D	25	25	X				X	X								
33472-0835	-	CUSTOM	TBD			X				X	X								
33472-0836	YES	BLACK	A	60	60	X				X	X								
33472-0837	YES	LT. GRAY	B	60	25	X				X	X								
33472-0838	YES	BROWN	C	25	60	X				X	X								
33472-0839	YES	GREEN	D	25	25	X				X	X								
33472-0840	YES	CUSTOM	TBD			X				X	X								
33472-0841	-	BLACK	A	60	60	X				X	X								X
33472-0842	-	LT. GRAY	B	60	25	X				X	X								X
33472-0843	-	BROWN	C	25	60	X				X	X								X
33472-0844	-	GREEN	D	25	25	X				X	X								X
33472-0845	-	CUSTOM	TBD			X				X	X								X
33472-0846	YES	BLACK	A	60	60	X				X	X								X
33472-0847	YES	LT. GRAY	B	60	25	X				X	X								X
33472-0848	YES	BROWN	C	25	60	X				X	X								X
33472-0849	YES	GREEN	D	25	25	X				X	X								X
33472-0850	YES	CUSTOM	TBD			X				X	X								X
33472-0851	-	BLACK	A	60	60	X	X	X	X	X	X	X	X	X	X	X	X	X	X
33472-0852	-	LT. GRAY	B	60	25	X	X	X	X	X	X	X	X	X	X	X	X	X	X
33472-0853	-	BROWN	C	25	60	X	X	X	X	X	X	X	X	X	X	X	X	X	X
33472-0854	-	GREEN	D	25	25	X	X	X	X	X	X	X	X	X	X	X	X	X	X
33472-0855	-	BLACK	D	25	25	X	X	X	X	X	X	X	X	X	X	X	X	X	X
33472-0856	YES	BLACK	A	60	60					X									X
33472-0857	YES	BLACK	A	60	60	X	X					X	X	X					X
33472-0858	YES	BLACK	A	60	60	X	X	X				X	X	X					X
33472-0859	-	BLACK	A	60	60	X	X	X				X	X	X					X
33472-0860	-	BLACK	D	25	25					X									X
33472-0861	-	BLACK	A	60	60														X
33472-0862	-	BLACK	A	60	60	X													X
33472-0863	-	BLACK	A	60	60	X	X	X											X
33472-0864	-	BLACK	A	60	60	X	X	X											X

NOTES: UNLESS OTHERWISE SPECIFIED

- DESIGNED TO MATE WITH BLADE HOUSING ASSEMBLY SPECIFIED IN MOLEX CHARTED DRAWING SD-33482-081 OR DEVICE CONNECTION AS SPECIFIED IN USCAR DRAWING 150-S-008-2-202.
- ASSEMBLY SHIPPED WITH RECEPTACLE INSERT IN PRE-LOCK POSITION (SEE SECTION B-B PRE-LOCK). UPON FULL TERMINAL ASSEMBLY, EACH RECEPTACLE INSERT MUST BE SNAPPED INTO ITS FINAL-LOCK POSITION.
- FOR RECEPTACLE TERMINALS TO BE USED WITH THIS ASSEMBLY, SEE DRAWING SD-33012-002.
- SYSTEM TO BE USED WITH WIRE WITH DIAMETER RANGE OF 15mm to 25mm.
- ASSEMBLIES SHALL CONFORM TO IBULKY PACKAGING SPECIFICATION PK-31300-635. ASSEMBLIES SHALL CONFORM TO CELL PACKY PACKAGING SPECIFICATION PK-31300-993.

- OPTIONAL CPA SHOWN IN ALL VIEWS. SEE TABLE FOR SPECIFIC ASSEMBLY OPTION AND NUMBER. CPA MUST BE INSERTED TO THE PRE-LOCK POSITION, AS SHOWN IN SECTION B-B, WHEN CORRECTLY SEATED THE CPA DOES NOT MOVE FREELY. ENGAGEMENT FORCE TO MOVE CPA FROM PRE-LOCK TO FINAL LOCK POSITION, WHEN UNMATED: 40N MIN. DISENGAGEMENT FORCE TO MOVE CPA FROM FINAL LOCK TO PRE-LOCK POSITION: 3N MIN.
- SPS/NYLON BLEND, 20% GLASS FILLED.
- SHALL CONFORM TO PRODUCT SPECIFICATION PS-33472-000
- PACKAGING: IN THE EVENT THAT INSERT IS FOUND IN THE SEATED (FINAL LOCK) POSITION. REFER TO MOLEX SPECIFICATION PS-34646-001, AVAILABLE AT WWW.MOLEX.COM
- ASSEMBLY CONFORMS TO SAE/USCAR-2 REV 4 WITH THE FOLLOWING EXCEPTIONS: TPA REMOVAL FROM FINAL LOCK TO PRE-LOCK POSITION SHALL NOT EXCEED 130 NEWTONS. TERMINAL INSERTION FORCE FOR WIRE SIZE ABOVE 25mm NOT EXCEEDING 2.69mm SHALL NOT EXCEED 40 NEWTONS.



ENTER DESCRIPTION EEC NO: UAU2011-0262 DRAWN BY: 2000/10/05 CHKD: 2000/10/05 APPR: WJSHY 2000/10/05 REV:	QUALITY SYMBOLS	GENERAL TOLERANCES (UNLESS SPECIFIED)	DIMENSION STYLE	SCALE	DESIGN UNITS	THIRD ANGLE PROJECTION
	▽=0	4 PLACES ± mm ± INCH	MM ONLY	2:1	METRIC	☉
	▽=0	3 PLACES ± 0.10 ± ---				
▽=0	2 PLACES ± 0.3 ± ---					
		ANGULAR ± 3 °				
DRAFT WHERE APPLICABLE MUST REMAIN WITHIN DIMENSIONS		DRAWN BY DATE: D. MARCOUX 06-13-02		CHECKED BY DATE: DGRIFITHS 06-13-02		MX150 RECEPTACLE CONN ASSEMBLY 2 ROW SEALED 8 WAY MOLEX INCORPORATED SHEET NO. 1 OF 2
		APPROVED BY DATE: FHOLUB 06-13-02		MATERIAL NO. DOCUMENT NO. SD-33472-081		
THIS DRAWING CONTAINS INFORMATION THAT IS PROPRIETARY TO MOLEX INCORPORATED AND SHOULD NOT BE USED WITHOUT WRITTEN PERMISSION						

ASSEMBLY PART NUMBER	CPA	COLOR	KEYING OPTION	DIMENSIONS (DEGREES)		CAVITY TYPE & STATUS (X = PLUGGED)								
				A	B	1	2	3	4	5	6	7	8	
33472-0865	-	BLACK	A	60	60	X						X		
33472-0866	-	BLACK	A	60	60		X	X			X	X		X
33472-0867	-	BLACK	A	60	60	X		X			X	X		
33472-0868	-	BLACK	A	60	60						X	X	X	X
33472-0869	-	BLACK	A	60	60							X		
33472-0870	-	BLACK	A	60	60	X		X			X	X	X	X
33472-0871	-	BLACK	A	60	60		X	X	X	X	X	X	X	X
33472-0872	-	BLACK	A	60	60							X	X	
33472-0873	-	BLACK	A	60	60		X	X				X	X	X
33472-0874	-	BLACK	A	60	60		X	X						
33472-0875	-	BLACK	A	60	60	X			X					
33472-0876	-	BLACK	A	60	60		X	X		X	X	X	X	X
33472-0877	YES	BLACK	A	60	60									X
33472-0878	-	BLACK	A	60	60		X		X	X				
33472-0879	-	DARK GRAY	C	25	60									
33472-0880	-	STONE GRAY	D	25	25									
33472-0881	YES	DARK GRAY	C	25	60									
33472-0882	YES	STONE GRAY	D	25	25									

<b>ENTER DESCRIPTION</b> EC NO: UAU2011-0262 DRAWN: MERZYL 2010/10/01 CHKD: 2010/10/05 APPR: IKOSHY 2010/10/05 REV: DESCRIPTION	QUALITY SYMBOLS	GENERAL TOLERANCES (UNLESS SPECIFIED)	DIMENSION STYLE	SCALE	DESIGN UNITS	THIRD ANGLE PROJECTION
	▽=0	4 PLACES ± 0.10	MM ONLY	1:1	METRIC	
	▽=0	3 PLACES ± 0.10				
	▽=0	2 PLACES ± 0.10				
		1 PLACE ± 0.3				
		ANGULAR ± 3°				
		DRAFT WHERE APPLICABLE MUST REMAIN WITHIN DIMENSIONS				
			DRAWN BY: D. MARCOUX	DATE: 06-13-02	TITLE: MX150 RECEPTACLE CONN ASSEMBLY 2 ROW SEALED 8 WAY	
			CHECKED BY: DGRIFITHS	DATE: 06-13-02	MATERIAL NO. MOLEX INCORPORATED	
			APPROVED BY: FHOLUB	DATE: 06-13-02	DOCUMENT NO. SD-33472-081	
					SHEET NO. 2 OF 2	
			THIS DRAWING CONTAINS INFORMATION THAT IS PROPRIETARY TO MOLEX INCORPORATED AND SHOULD NOT BE USED WITHOUT WRITTEN PERMISSION			