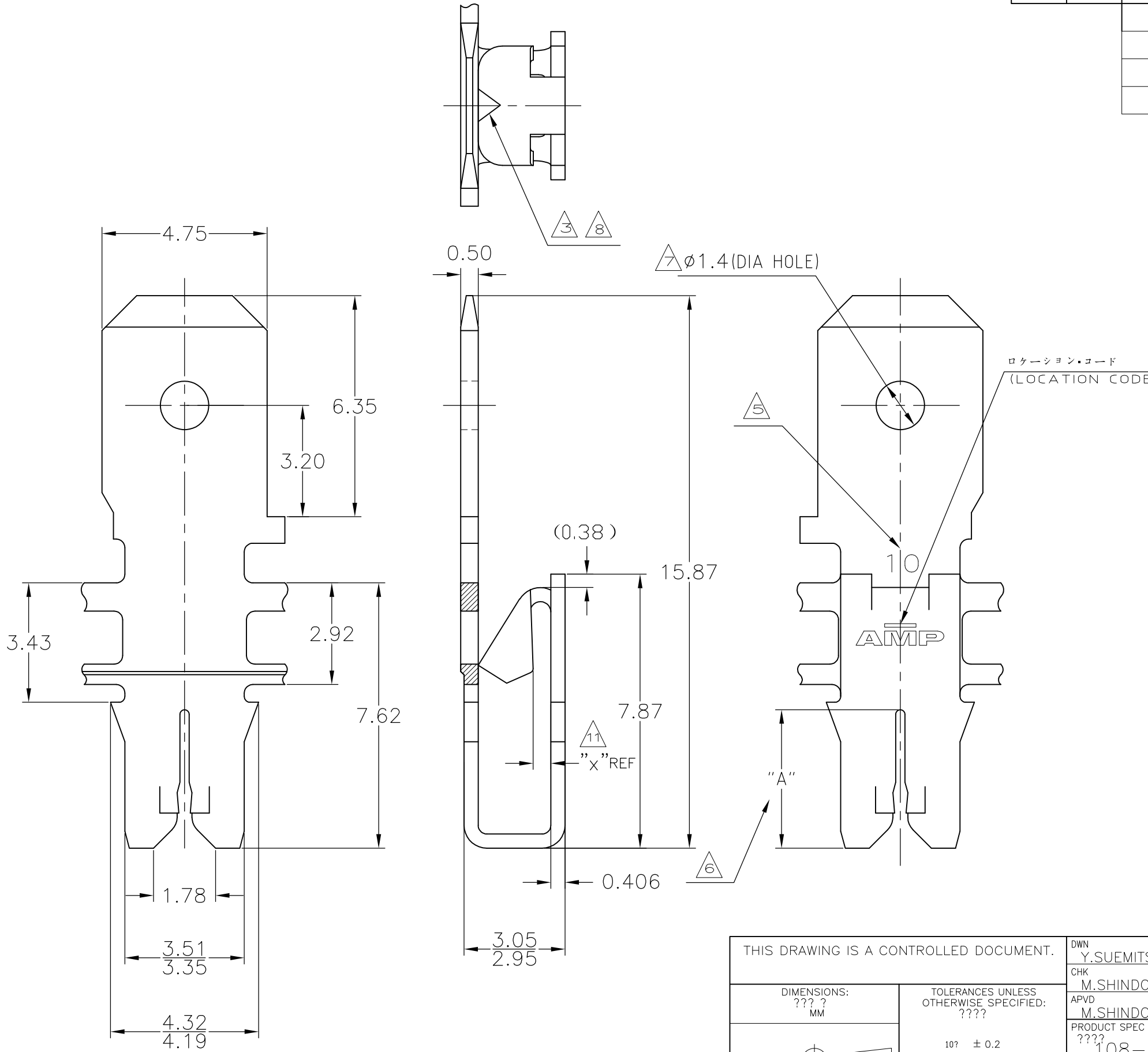


THIS DRAWING IS UNPUBLISHED. RELEASED FOR PUBLICATION

© COPYRIGHT BY TYCO ELECTRONICS CORPORATION. ALL RIGHTS RESERVED.

LOC	DIST	REVISIONS						
		P	LTR	DESCRIPTION	DATE	DWN	APVD	
J	—		E1	REVISED	ECR-05-003146	16MAY05	J.S	N.Y
			E2	REVISED	ECR-05-016374	24NOV05	J.S	N.Y
			F	REVISED	ECR-06-018980	08AUG06	S.I	N.Y
			F1	REVISED	ECR-08-011809	09MAY08	S.I	S.M



- 注記: 1. 連鎖状の端子のピッチは、5.59 ±0.08 である。
 2. 圧接するマグネットワイヤーは軟銅線のみであり、スロットは1本のマグネットワイヤーのみ圧接できる。
 3. ポークイン部は、0.5~0.8mm² (AWG#20~#18) の単線、錫コート線、または半田付したより線を装着できる。但しポークインタブ端子のかん合は不可。
 4. キャビティに圧入後、タブ部を45°~90°まで曲げるか、ポッティングによる封入を行ない、
 5. 嵌合リセプタクルを引き抜く時に端子が抜けないようにする。
 6. 適用ワイヤー毎のスロットサイズの I.D. ナンバー。
 7. スロット高さについては、TABLE参照のこと。
 8. 穴の有無については、TABLE参照のこと。
 9. ポークインタブ端子をかん合できる。但しポークインワイヤーの装着は不可。
 10. 適用リセプタクル端子: 187シリーズポジティブロックEX, 187シリーズFASTON
 ×尚、かん合時はマグマイト端子に変形がない様注意すること。
 11. ポークインかん合及び187リセプタクルかん合を併用は不可
 12. 表参照

- NOTES: 1. CONTINUOUS STRIP ON REELS WITH TERMINALS LOCATED ON 5.59 ±0.08 CENTERS.
 2. SLOT ACCEPTS SINGLE COPPER MAGNET WIRE ONLY.
 3. POKE-IN ACCEPTS A 0.5~0.8mm² (#20~#18)AWG SOLID OR FUSED STRANDED LEAD WIRE BUT POKE-IN TAB IS NOT APPLICABLE.
 4. AFTER INSERTION INTO PLASTIC HOLDER TAB PORTION MUST BE BENT OVER 45° TO 90° OR POTTED-IN TO PREVENT PULL-OUT WHEN MATING RECEPTACLE IS DISCONNECTED.
 5. IDENTIFICATION NUMBER FOR MAGNET WIRE SLOT SIZE.
 6. SLOT HEIGHT:SEE TABLE.
 7. HOLE IN TAB:SEE TABLE.
 8. APPLICABLE POKE-IN TAB BUT POKE-IN TWIRE IS NOT APPLICABLE.
 9. APPLICABLE RECEPTACLE CONT: 187 SERIES POSITIVE LOCK EX, 187SERIES FASTON.
 ×WHEN RECEPTACLE MATE WITH 187 TAB,MUST ATTEND NO DAMAGE TO MAG-MATE TERMINAL.
 10 BOTH OF POKE-IN MATING AND 187 RECEPTACLE MATING IS NOT AVAILABLE
 11 SEE TABLE

AS FOR THE P/N,SEE SHEET 2 OF 2

THIS DRAWING IS A CONTROLLED DOCUMENT.		DWN Y.SUEMITSU 25.SEP.'01	tyco Tyco Electronics AMP K.K.	
		CHK M.SHINDO 25.SEP.'01	Electronics Kawasaki, Japan	
DIMENSIONS: ??? ? MM		APVD M.SHINDO 25.SEP.'01	NAME ??	
TOLERANCES UNLESS OTHERWISE SPECIFIED: ????		PRODUCT SPEC ????	STD MAG-MATE POKE-IN WITH .187 TAB	
10? ± 0.2		APPLICATION SPEC ????	スタンダード マグマイト .187 タブ付 ポークイン端子	
30? >10 ± 0.25		WEIGHT 0.383g/ea	SIZE A3	CAGE CODE 00779
MATERIAL ?? 黄銅 (BRASS)		FINISH ?? SEE TABLE	DRAWING NO. ?? 316300	
		CUSTOMER DRAWING	RESTRICTED TO -	
		SCALE ?? 8:1	SHEET 1 OF 2	REV F1

THIS DRAWING IS UNPUBLISHED. RELEASED FOR PUBLICATION
 © COPYRIGHT - BY TYCO ELECTRONICS CORPORATION. ALL RIGHTS RESERVED.

LOC	DIST	REVISIONS		
J	-	P	LTR	DESCRIPTION
				DATE
				DWN
				APVD
				SEE SHEET 1

	↑	0.4	穴有り (WITH HOLE)	錫めっき仕上 (TIN PLATED)	4.57	33	1.20φ~1.30φ	6-316300-7
		0.4	穴有り (WITH HOLE)	錫めっき仕上 (TIN PLATED)	4.57	24	0.90φ~1.15φ	6-316300-6
		0.4	穴有り (WITH HOLE)	錫めっき仕上 (TIN PLATED)	4.06	15	0.64φ~0.89φ	6-316300-5
	△ POKE-IN TAB APPLICABLE	0.4	穴有り (WITH HOLE)	錫めっき仕上 (TIN PLATED)	4.06	10	0.35φ~0.63φ	6-316300-4
	↑	0.5	穴無し (WITHOUT HOLE)	錫めっき仕上 (TIN PLATED)	4.57	24	0.90φ~1.15φ	2-316300-9
		0.5	穴無し (WITHOUT HOLE)	錫めっき仕上 (TIN PLATED)	4.06	15	0.64φ~0.89φ	2-316300-8
	△ POKE-IN TAB NOT APPLICABLE	0.5	穴無し (WITHOUT HOLE)	錫めっき仕上 (TIN PLATED)	4.06	10	0.35φ~0.63φ	2-316300-7
OBSOLETE			穴無し (WITHOUT HOLE)	半田めっき仕上 (TIN-LEAD PLATED)	4.57	24	0.90φ~1.30φ	316300-9
OBSOLETE			穴無し (WITHOUT HOLE)	半田めっき仕上 (TIN-LEAD PLATED)	4.06	15	0.64φ~0.89φ	316300-8
OBSOLETE			穴無し (WITHOUT HOLE)	半田めっき仕上 (TIN-LEAD PLATED)	4.06	10	0.35φ~0.63φ	316300-7
	↑	0.5	穴有り (WITH HOLE)	錫めっき仕上 (TIN PLATED)	4.57	24	0.90φ~1.15φ	316300-6
		0.5	穴有り (WITH HOLE)	錫めっき仕上 (TIN PLATED)	4.06	15	0.64φ~0.89φ	316300-5
	△ POKE-IN TAB NOT APPLICABLE	0.5	穴有り (WITH HOLE)	錫めっき仕上 (TIN PLATED)	4.06	10	0.35φ~0.63φ	316300-4
OBSOLETE			穴有り (WITH HOLE)	半田めっき仕上 (TIN-LEAD PLATED)	4.57	24	0.90φ~1.30φ	316300-3
OBSOLETE			穴有り (WITH HOLE)	半田めっき仕上 (TIN-LEAD PLATED)	4.06	15	0.64φ~0.89φ	316300-2
OBSOLETE			穴有り (WITH HOLE)	半田めっき仕上 (TIN-LEAD PLATED)	4.06	10	0.35φ~0.63φ	316300-1
ポークイン部かん合 MATING TO POKE-IN		△ 11 "X" REF	△ 7 タブ穴 (HOLE IN TAB)	仕上 (FINISH)	△ 6 "A"	△ 5 I.Dマーク (I.D MARK)	△ 2 ワイヤレンジ(導体径) {WIRE RANGE(BARE WIRE DIA)}	型番 (PART No.)

△ 9 TABLE 1

187 SERIES POSITIVE LOCK EX	STRAIGHT TYPE	173722-1
		173723-1
		173724-X
		173725-X
	FLAG TYPE	175019-1

THIS DRAWING IS A CONTROLLED DOCUMENT.

DIMENSIONS: ??? ? MM	TOLERANCES UNLESS OTHERWISE SPECIFIED: ???	DWN Y.SUEMITSU 25.SEP.'01	Tyco Electronics AMP K.K. Kawasaki, Japan	
	±	CHK M.SHINDO 25.SEP.'01	NAME ??	STD MAG-MATE POKE-IN WITH .187 TAB
		APVD M.SHINDO 25.SEP.'01		
MATERIAL ??	FINISH ??	PRODUCT SPEC ????	SIZE A3	CAGE CODE 00779
CUSTOMER DRAWING		APPLICATION SPEC ???????	DRAWING NO G-316300	RESTRICTED TO -
		WEIGHT	SCALE ?? 1:1	SHEET 2 OF 2
				REV F1