

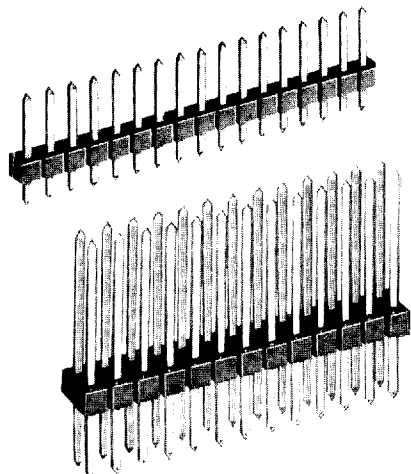
Squarestix™

Single and Double Row .025 (.64) Sq. Pins

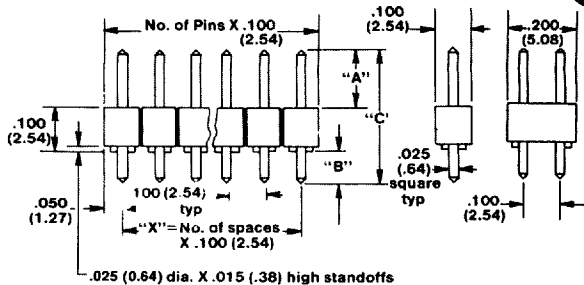
P.O. Box 130, Frenchtown, NJ 08825
 Phone 1-908-996-6841
 FAX 1-908-996-3891



A-61-05-87



Squarestix™ are straight .025 (.64) square pins in a single or double row body with 1 to 40 or 2 to 80 pins and available with 11 different pin lengths. (See chart for pin lengths.) The "break" feature allows full length strips to be broken to any number of pins without loss of any pins. They also can be ordered to any desired number of pins. Squarestix can be butted end-to-end or side-by-side on .100 (2.54) matrix. The body of Squarestix is UL94VO rated. To prevent solder wicking, Squarestix have .015 (.38) high standoffs.



Squarestix™

Single Row-Straight

1 to 40 pins

Double Row-Straight

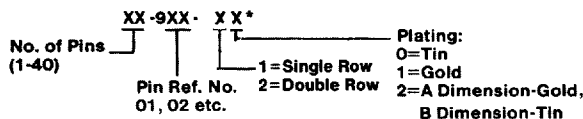
2 to 80 pins

.025 (.64) square pins

11 pin lengths

"Break-off" to any length.

HOW TO ORDER



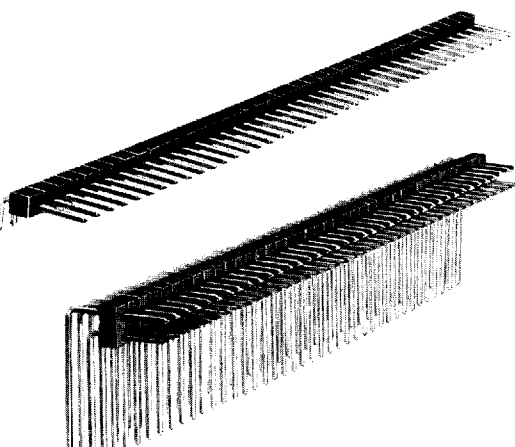
* Available with "D" dimension of .050. Consult factory for part number.

Catalog No.	Dim. A	11 PIN LENGTHS	
		Dim. B	Dim. C
XX-901-XX	.230 (5.84)	.100 (2.54)	.430 (10.92)
XX-902-XX	.230 (5.84)	.200 (5.08)	.530 (13.46)
XX-903-XX	.230 (5.84)	.300 (7.62)	.630 (16.00)
XX-904-XX	.230 (5.84)	.400 (10.16)	.730 (18.54)
XX-905-XX	.230 (5.84)	.500 (12.70)	.830 (21.08)
XX-906-XX	.230 (5.84)	.600 (15.24)	.930 (23.62)
XX-907-XX	.230 (5.84)	.700 (17.78)	1.030 (26.16)
XX-908-XX	.230 (5.84)	.800 (20.32)	1.130 (28.70)
XX-909-XX	.230 (5.84)	.900 (22.86)	1.230 (31.24)
XX-910-XX	.310 (7.87)	.115 (2.92)	.525 (13.34)
XX-911-XX	.475 (12.06)	.115 (2.92)	.690 (17.53)

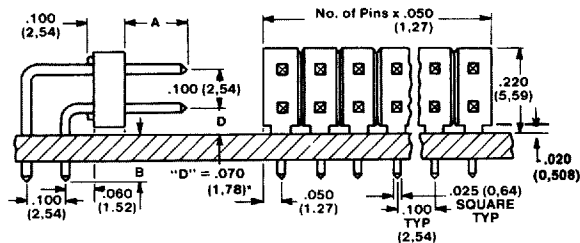
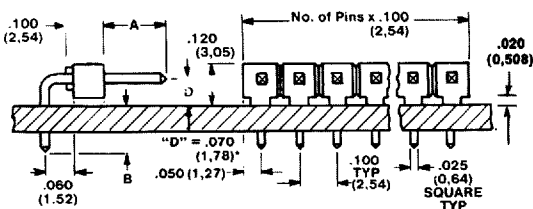
SPECIFICATIONS

Material:
 Body: Glass Filled Thermoplastic UL-94VO Rated
 Pins: Grade A 3/4 Hard Phosphor Bronze Per QQ-B-750

Plating: 10μ (254 micro meter) Gold per MIL-G-45204 over 50μ (1.27 micro meter) Nickel per QQN-290.
 100μ (2.54 micro meter) Tin per MIL-T-10727 over 50μ (1.27 micro meter) Nickel per QQN-290.



.025 (.64) square pins at a 90° angle in a single and double row plastic body, UL94VO rated, are available with various pin lengths. A full single row contains 40 pins (double row 80). However, Squarestix can be ordered to any number of pins from 1 to 40 or 2 to 80. The unique "break" feature allows breaking off any number of wanted pins. (See chart below for pin lengths.) 90° Squarestix are end-to-end buttable on .100 (2.54) matrix. An .020 (.51) high standoff facilitates cleaning and prevents solder wicking.



Squarestix

Single Row

11 pin lengths

1 to 40 .025 (.64) square 90° pins

Double Row

7 Pin Lengths

2 to 80 .025 (.64) square 90° pins

"Break-off" to any length.

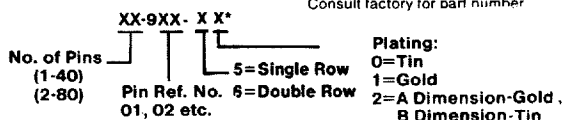
SINGLE ROW 11 Pin Lengths

CAT. NO.	DIM. "A"	DIM. "B"
XX-901-5X	.130 (3.30)	.190 (4.83)
XX-902-5X	.130 (3.30)	.345 (8.76)
XX-903-5X	.230 (5.84)	.120 (3.05)
XX-904-5X	.230 (5.84)	.185 (4.70)
XX-905-5X	.230 (5.84)	.285 (7.24)
XX-906-5X	.230 (5.84)	.320 (8.13)
XX-907-5X	.230 (5.84)	.385 (9.78)
XX-908-5X	.230 (5.84)	.485 (12.37)
XX-909-5X	.230 (5.84)	.585 (14.26)
XX-910-5X	.230 (5.84)	.685 (17.40)
XX-911-5X	.230 (5.84)	.785 (19.94)

DOUBLE ROW 7 pin lengths

XX-901-6X	.230 (5.84)	.120 (3.05)
XX-902-6X	.230 (5.84)	.185 (4.70)
XX-903-6X	.230 (5.84)	.285 (7.24)
XX-904-6X	.230 (5.84)	.385 (9.78)
XX-905-6X	.230 (5.84)	.485 (12.32)
XX-906-6X	.230 (5.84)	.585 (14.86)
XX-907-6X	.320 (8.13)	.120 (3.05)

HOW TO ORDER



* Available with "D" dimension of .050. Consult factory for part number