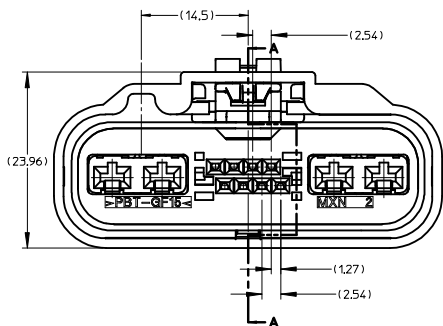
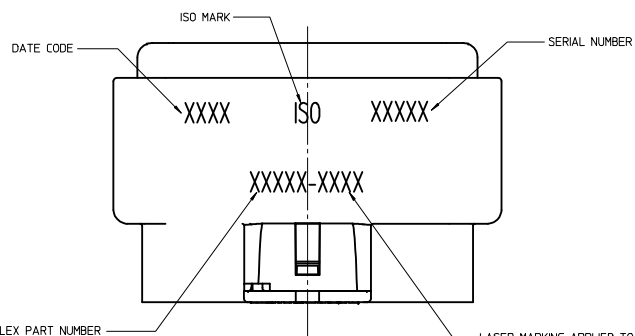
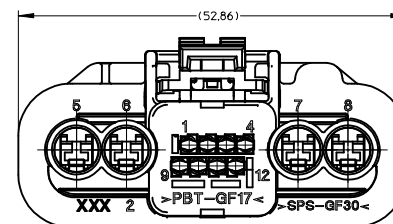
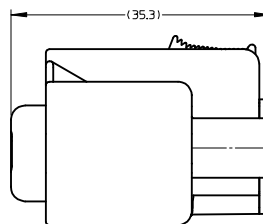


SECTION A-A



POLARIZATION A



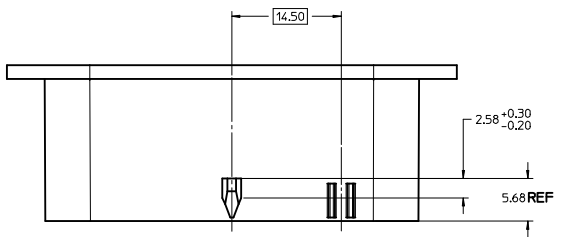
POLARIZATION B

RELEASE IEC NO. UAU2018-0184 DRAWN BY CHYKSEL104 APPR: JDENG02 DATE 2017/08/09 DATE 2017/09/05 DATE 2017/09/19	QUALITY SYMBOLS	GENERAL TOLERANCES (UNLESS SPECIFIED)	DIMENSION STYLE	SCALE	DESIGN UNITS	THIRD ANGLE PROJECTION	
	∇=0 ∇=0 ∇=0	4 PLACES ± --- ± --- 3 PLACES ± --- ± --- 2 PLACES ± 0.13 ± --- 1 PLACE ± 0.25 ± --- 0 PLACE ± --- ± ---	mm INCH ± --- ± --- ± --- ± --- ± --- ± --- ± --- ± ---	MM ONLY DRAWN BY DATE JDENG02 2012/11/01 CHECKED BY DATE CBOIU 2013/07/09 APPROVED BY DATE JDENG02 2017/09/19	2:1	METRIC	TITLE 12 WAY HYBRID HARNESS CONNECTOR ASSEMBLY ISO WIRE
	DRAFT WHERE APPLICABLE MUST REMAIN WITHIN DIMENSIONS	ANGULAR ±1/2° SEE BOM TABLE	MATERIAL NO. SD-31034-001 DOCUMENT NO.	SHEET NO. 2 OF 5			
	THIS DRAWING CONTAINS INFORMATION THAT IS PROPRIETARY TO MOLEX INCORPORATED AND SHOULD NOT BE USED WITHOUT WRITTEN PERMISSION						

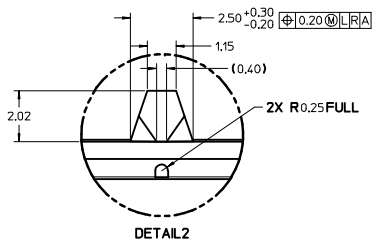
MOLEX ASSEMBLY NUMBER	CONNECTOR W/ CPA OPTION	HARNESS HOUSING NUMBER	POLARIZATION	MATTE SEAL COVER NUMBER	PLUGGED TERMINAL CAVITY LOCATIONS	TOTAL NUMBER OF PLUGGED CAVITIES
31034-5000	NO	31035-1000	A	31037-1000		0
31034-5001	NO	31035-1000	A	31037-1001	1 2 3 4 9 10 11 12	8
31034-5002	NO	31035-1000	A	31037-1002	2 3	2
31034-5003	NO	31035-1000	A	31037-1003	2	1
31034-5004	NO	31035-1000	A	31037-1004	4	1
31034-5005	NO	31035-1000	A	31037-1005	2 4	2
31034-5006	NO	31035-1000	A	31037-1006	2 3 4	3
31034-6000	YES	31035-1000	A	31037-1000		0
31034-6001	YES	31035-1000	A	31037-1001	1 2 3 4 9 10 11 12	8
31034-6002	YES	31035-1000	A	31037-1002	2 3	2
31034-6003	YES	31035-1000	A	31037-1003	2	1
31034-6004	YES	31035-1000	A	31037-1004	4	1
31034-6005	YES	31035-1000	A	31037-1005	2 4	2
31034-6006	YES	31035-1000	A	31037-1006	2 3 4	3
31034-6010	YES	31035-1000	A	31037-1009	3 4	2
31034-6007	YES	31035-1001	B	31037-1000		0
31034-5007	NO	31035-1001	B	31037-1000		0
31034-6008	YES	31035-1001	B	31037-1007	2 9 10	3
31034-6009	YES	31035-1001	B	31037-1008	2 3 9 10 11 12	5
31034-6011	YES	31035-1001	B	31037-1010	2 9 10 11	4
31034-6012	YES	31035-1001	B	31037-1011	2 9	2
31034-6013	YES	31035-1001	B	31037-1012	2 9 11 12	4
31034-6014	YES	31035-1001	B	31037-1013	2 3 9 10 11 12	6
31034-6015	YES	31035-1001	B	31037-1014	2 3 10 11	3
31034-5016	NO	31035-1000	A	31037-1015	2 3 9	3
31034-5017	NO	31035-1000	A	31037-1016	4 10 11	3
31034-6016	YES	31035-1001	B	31037-1017	2 3 9 10	4
31034-6017	YES	31035-1001	B	31037-1015	2 3 9	3
31034-6018	YES	31035-1001	B	31037-1018	2 3 9 11 12	5
31034-5018	NO	31035-1000	A	31037-1017	2 3 9 10	4
31034-5019	NO	31035-1000	A	31037-1019	2 3 9 10 12	5
31034-6019	YES	31035-1000	A	31037-1015	2 3 9	3
31034-6020	YES	31035-1000	A	31037-1017	2 3 9 10	4
31034-6021	YES	31035-1000	A	31037-1018	2 3 9 11 12	5
31034-6022	YES	31035-1000	A	31037-1013	2 3 9 10 11 12	6

DESCRIPTION	NORMAL TERMINAL SIZE	PART NUMBER	WIRE SIZE	INSULATION DIAMETER RANGE
TE - RECEPTACLE	0.64 (SN)	1393367-1	22AWG (0.35MM)	1.2-1.65MM
TE - RECEPTACLE	0.64 (SN)	1393366-1	18-20AWG 0.75-0.5MM	1.4-2.06MM
TE - RECEPTACLE	2.80 (SN)	1326032-6	12AWG	3.1-3.3MM
TE - RECEPTACLE	2.80 (SN)	1326032-5	14AWG	2.1-3.0M
TE - RECEPTACLE	2.80 (SN)	1326032-4	16AWG	1.8-2.3MM
TE - RECEPTACLE	2.80 (SN)	1326032-3	18AWG	1.8-2.3MM
TE - RECEPTACLE	2.80 (SN)	1326032-2	20AWG	1.2-1.9MM
TE - RECEPTACLE	2.80 (SN)	1326032-1	22AWG	1.2-1.9MM

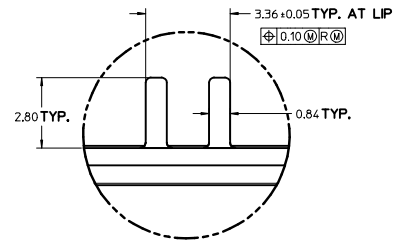
RELEASE EC NO: UAU2016-0184 DRWPKA25 2017/09/05 CHKDGL104 2017/09/15 APPR_JDENG02 2017/09/19	QUALITY SYMBOLS ▽=0 ▽=0 ▽=0	GENERAL TOLERANCES (UNLESS SPECIFIED) mm INCH		DIMENSION STYLE MM ONLY		SCALE 3:1	DESIGN UNITS METRIC	THIRD ANGLE PROJECTION
		4 PLACES ± --- ± --- 3 PLACES ± --- ± --- 2 PLACES ± 0.13 ± --- 1 PLACE ± 0.25 ± --- 0 PLACE ± --- ± ---		DRAWN BY DATE JDENG02 2012/11/01		TITLE 12 WAY HYBRID HARNESS CONNECTOR ASSEMBLY ISO WIRE		
		ANGULAR ± 1/2° DRAFT WHERE APPLICABLE MUST REMAIN WITHIN DIMENSIONS		CHECKED BY DATE CBQIU 2013/07/09		molex		
		SEE BOM TABLE		APPROVED BY DATE JDENG02 2017/09/19		MATERIAL NO. SD-31034-001		SHEET NO. 3 OF 5
THIS DRAWING CONTAINS INFORMATION THAT IS PROPRIETARY TO MOLEX INCORPORATED AND SHOULD NOT BE USED WITHOUT WRITTEN PERMISSION								



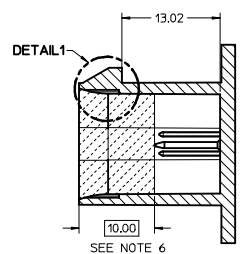
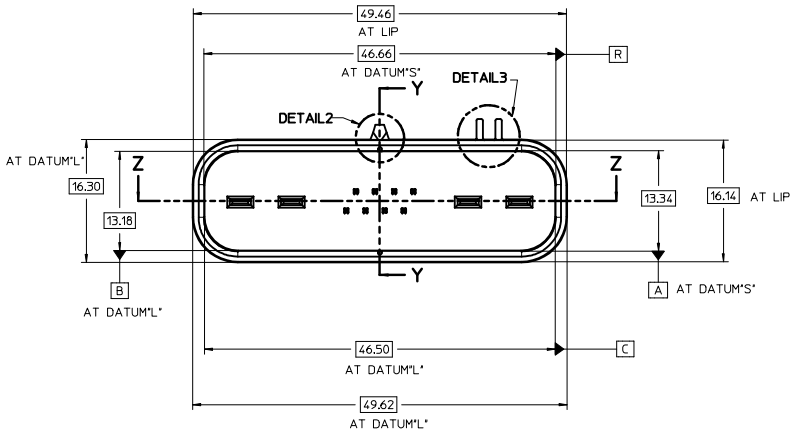
POLARIZATION A



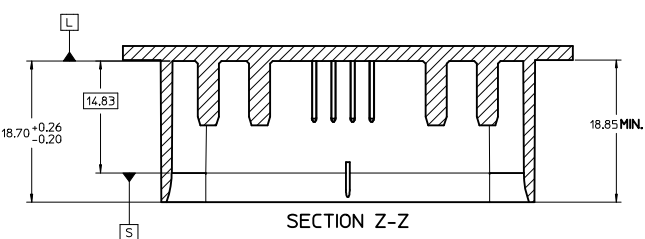
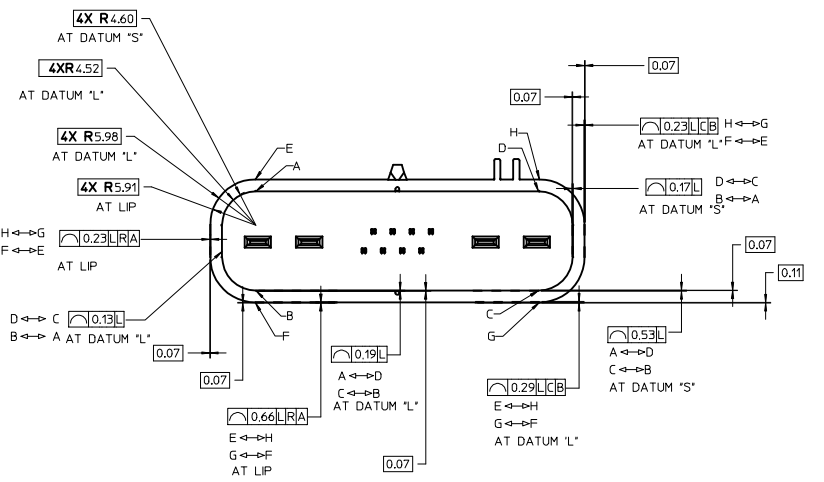
DETAIL2



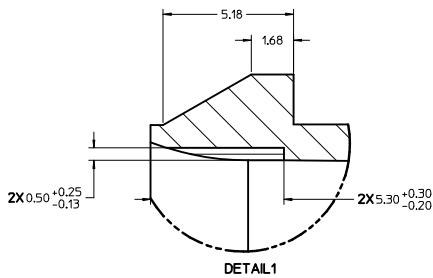
DETAIL3



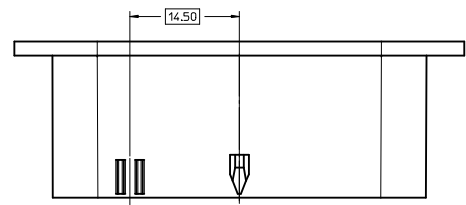
SECTION Y-Y



SECTION Z-Z



DETAIL1



POLARIZATION B

NOTES: UNLESS OTHERWISE SPECIFIED.
 6. THE STEEL THAT FORMS THE INSIDE SURFACE OF THE HEADER FLANGE TO 10,00MM INSIDE MUST BE POLISHED WITH A DIAMOND FINISH (SPI A-2) OVER THE FULL PERIPHERY OF THE TOOL. THIS SURFACE MUST ALSO HAVE NO STEEL MATCH OR PARTING LINES.

ENTER DESCRIPTION EC NO: UAU2016-0164 DRW: PAK25 2017/08/09 CHK: DGL104 2017/09/05 APPR: JDENG02 2017/09/19	QUALITY SYMBOLS ✓=0 ✓=0 ✓=0	GENERAL TOLERANCES (UNLESS SPECIFIED) mm INCH		DIMENSION STYLE MM ONLY		SCALE 3:1	DESIGN UNITS METRIC	THIRD ANGLE PROJECTION		
		4 PLACES ± --- ± ---	3 PLACES ± --- ± ---	2 PLACES ± 0.13 ± ---	1 PLACE ± 0.25 ± ---	0 PLACE ± --- ± ---	DRAWN BY JDENG02	DATE 2012/11/01	12 WAY HYBRID HARNESS CONNECTOR ASSEMBLY ISO WIRE molex DOCUMENT NO. SD-31034-001	SHEET NO. 4 OF 5
		ANGULAR ± 1/2°					CHECKED BY CBQIU	DATE 2013/07/09		
		DRAFT WHERE APPLICABLE MUST REMAIN WITHIN DIMENSIONS					APPROVED BY JDENG02	DATE 2017/09/19		
SEE BOM TABLE					MATERIAL NO.					

