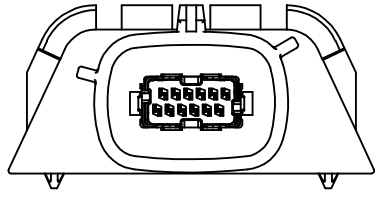
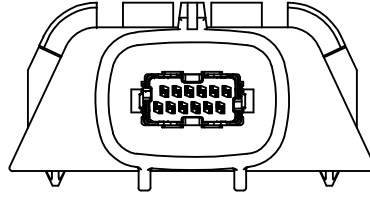


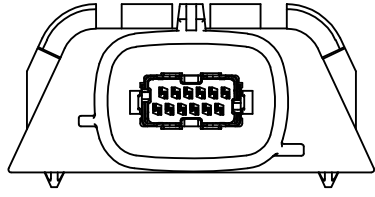
20 19 18 17 16 15 14 13 12 11 10 9 8 7 6 5 4 3 2 1



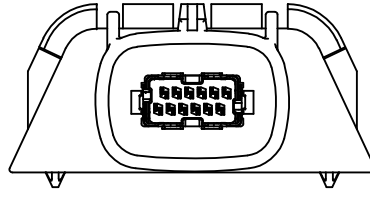
34857-0506  
KEY OPTION 'A'  
COLOR: BLACK



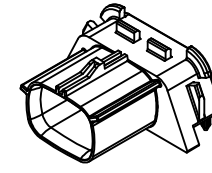
34857-0606  
KEY OPTION 'B'  
COLOR: GRAY



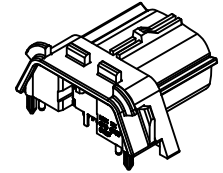
34857-0706  
KEY OPTION 'C'  
COLOR: BROWN



34857-0806  
KEY OPTION 'D'  
COLOR: GREEN



SCALE 2:1



SCALE 2:1

- NOTES: VALID UNLESS OTHERWISE SPECIFIED
1. GENERAL:
    - a. APPLICATION SPECIFICATION: AS-111149-002
    - b. PRODUCT SPECIFICATION: PS-111149-001
    - c. PACKAGING SPECIFICATION PER MOLEX DRAWING: PK-31301-768
    - d. PARTS MUST BE IN COMPLIANCE TO THE CURRENT VERSION OF THE MOLEX CHEMICAL SUBSTANCES FOR PRODUCTS AND PACKAGING SPECIFICATION
    - e. DATA MUST BE SUBMITTED UNDER THE MOLEX PART NUMBER TO IMDS (COMPANY ID#13255)
    - f. PCB TO BE FR4 0.062" (1.57mm) THICK
    - g. MATING CONNECTOR MINIMUM CLEARANCE: AREA TO REMAIN CLEAR OF MODULE COMPONENTS, ADHESIVE, DEBRIS, ETC.
    - h. APPLICABLE SEALANT TO BE USED: LOCTITE 5910
    - i. PCB MOUNTING BOSSES DESIGNED TO BE USED WITH THE FOLLOWING: #4-20 x .375" TRI-LOBULAR THREAD FORMING SCREW  
RECOMMENDED ASSEMBLY TORQUE: 1.1Nm +/- 0.11Nm
  2. DESIGN - MATERIALS:
    - a. HEADER HOUSING: SPS GF30
    - b. TERMINALS - COPPER ALLOY  
OVERMOLDING - LCP GF30  
MATE-SIDE PLATING: SELECTIVE GOLD OVER NICKEL  
PCB SIDE PLATING: TIN OVER NICKEL
    - c. BISCUIT - SPS GF30
    - d. SHIELDS - COPPER ALLOY  
PLATING - TIN OVER NICKEL
  3. DESIGN - GEOMETRY:
    - a. ALL GRAPHIC DATA IS BASIC (NO TOLERANCE) AND MUST BE TAKEN FROM THE DATA FILE AT ITS LATEST REVISION.
    - b. N/A
    - c. GEOMETRIC DIMENSIONS AND TOLERANCES PER ASME Y14.5M-2009
    - d. EDGES AND UNDIMENSIONED DETAILS PER ISO13715
    - e. CORNERS SHOWN AS SHARP TO BE R 0.2 MAX.
    - f. MODULE MOUNTING SURFACE: SEALANT TO BE APPLIED TO THIS REGION ONLY.  
PARTING LINES PRESENT ON THIS SURFACE.
  4. LASER MARKING TO BE MARKED WITH:
    - HUMAN READABLE CODE (HRC)
    - PERMANENTLY APPLIED ON THE PART WITH 1.5mm LETTER SIZE
    - INFORMATION TO BE PRINTED  
5 DIGIT JULIAN MANUFACTURING DATE STAMP YYDDD

DRAWING REVISED DEC NO: UAU2016-0836 DRAWN: CDILLON CHKD: CDILLON APPR: KNAUB 2015/12/01 2015/12/09	QUALITY SYMBOLS	GENERAL TOLERANCES (UNLESS SPECIFIED)	DIMENSION STYLE	SCALE	DESIGN UNITS	THIRD ANGLE PROJECTION
	▽=0	4 PLACES ± .10	MM ONLY	4:1	METRIC	☉
	▽=0	3 PLACES ± .13				
	▽=0	2 PLACES ± 0.25				
		ANGULAR ± 1°				
		DRAFT WHERE APPLICABLE MUST REMAIN WITHIN DIMENSIONS	MATERIAL NO.	DOCUMENT NO.		
			SEE CHART	SD-34857-001		
			THIS DRAWING CONTAINS INFORMATION THAT IS PROPRIETARY TO MOLEX INCORPORATED AND SHOULD NOT BE USED WITHOUT WRITTEN PERMISSION			

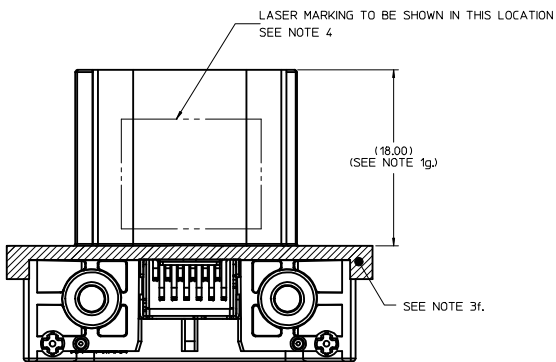
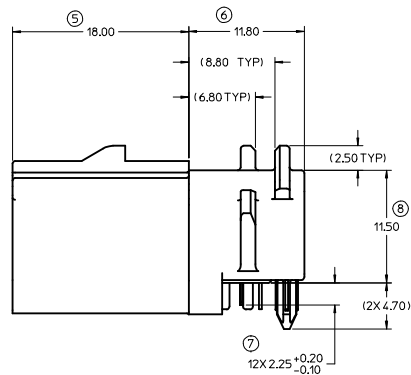
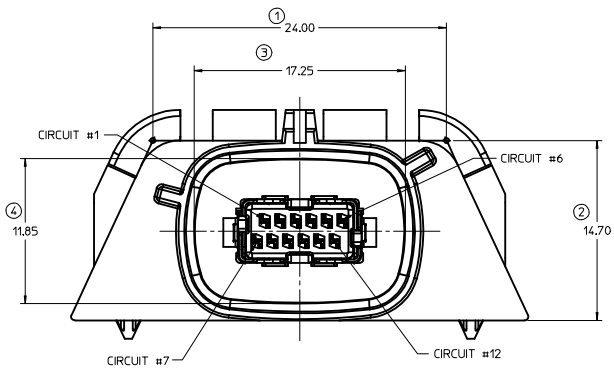
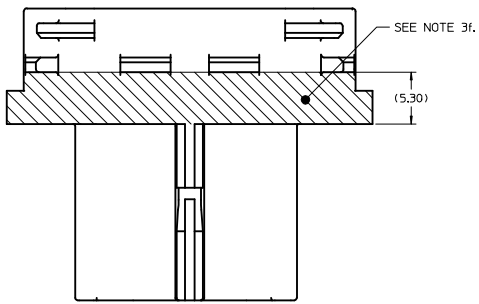
12 CKT HSAUTOLINK II  
R/A SEALED HEADER ASM  
FLANGED

MOLEX INCORPORATED

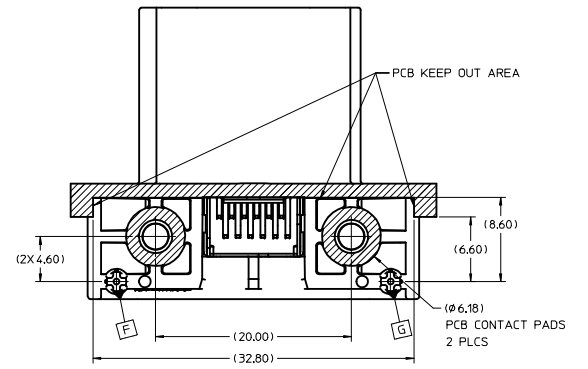
SD-34857-001

SHEET NO.  
1 OF 3

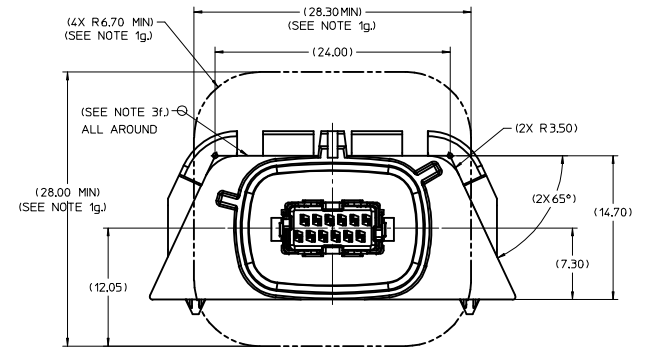
19 18 17 16 15 14 13 12 11 10 9 8 7 6 5 4 3 2 1



PCB CLEAROUT REGIONS

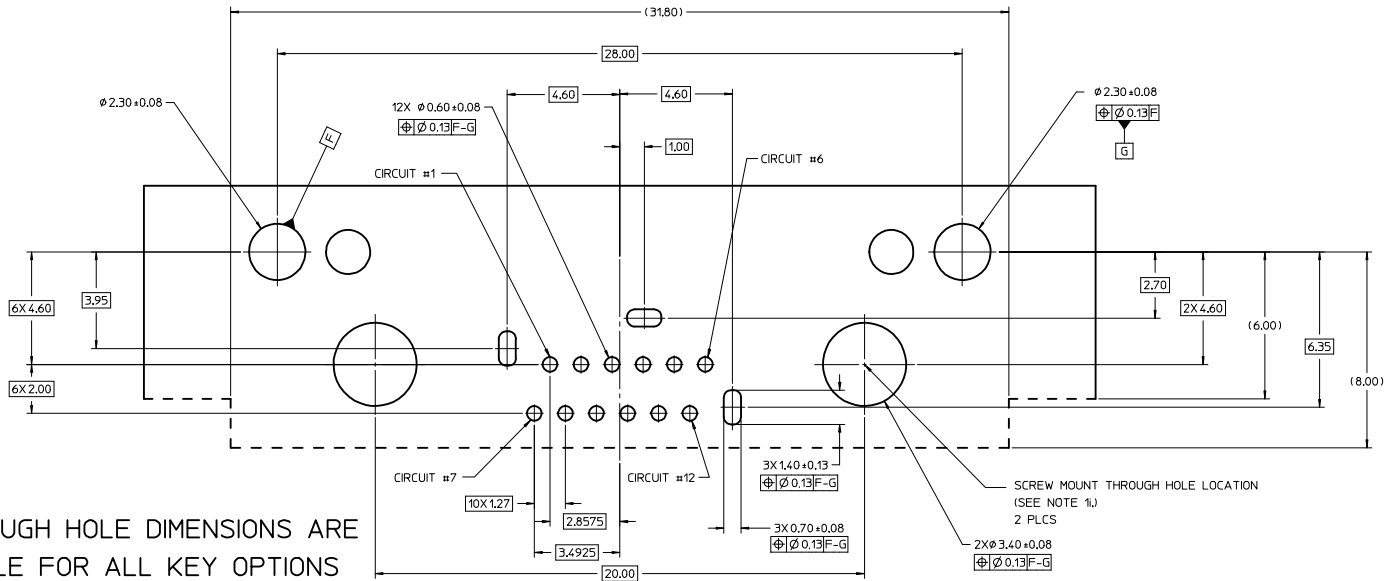


HEADER-TO-MODULE INTERFACE REQUIREMENTS



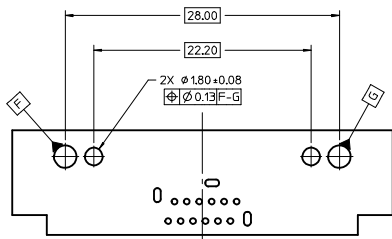
<p><b>DRAWING REVISED</b>                  EEC NO. UAU2016-0836                  DRAWN/CD LILLON 2015/12/01                  CHKD:                  APPR: KWAUB 2015/12/09</p>	QUALITY SYMBOLS	GENERAL TOLERANCES (UNLESS SPECIFIED)	DIMENSION STYLE	SCALE	DESIGN UNITS	THIRD ANGLE PROJECTION	
	▽=0	mm INCH	MM ONLY	4:1	METRIC	☉	
	▽=0	4 PLACES ± --- ± ---	DRAWN BY DATE	CD LILLON 2011/07/12	TITLE		
	▽=0	3 PLACES ± --- ± ---	CHECKED BY DATE	CD LILLON 2011/08/05	12 CKT HSAUTOLINK II R/A SEALED HEADER ASM FLANGED		
▽=0	2 PLACES ± 0.13 ± ---	APPROVED BY DATE	SMARCEAU 2011/08/08	MATERIAL NO. DOCUMENT NO.			
▽=0	1 PLACE ± 0.25 ± ---	ANGULAR ± 1°	SEE CHART		MOLEX INCORPORATED		
DRAFT WHERE APPLICABLE MUST REMAIN WITHIN DIMENSIONS		SIZE D		SD-34857-001			
		THIS DRAWING CONTAINS INFORMATION THAT IS PROPRIETARY TO MOLEX INCORPORATED AND SHOULD NOT BE USED WITHOUT WRITTEN PERMISSION		SHEET NO. 2 OF 3			

### RECOMMENDED PCB LAYOUT - HEADER SIDE PCB

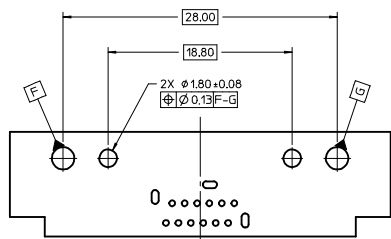


ALL THROUGH HOLE DIMENSIONS ARE APPLICABLE FOR ALL KEY OPTIONS

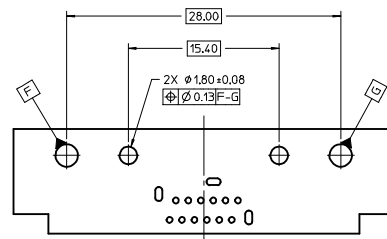
SCALE 10:1



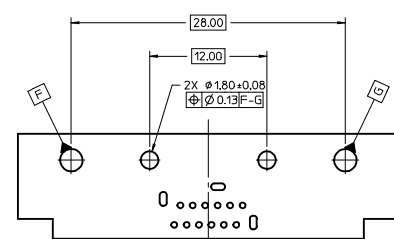
PCB KEY FEATURES  
OPTION 'A'



PCB KEY FEATURES  
OPTION 'B'



PCB KEY FEATURES  
OPTION 'C'



PCB KEY FEATURES  
OPTION 'D'

<b>DRAWING REVISED</b> ELEC. NO. UAU2016-0836 DRAWN BY CD LILLON CHECKED BY CD LILLON APPR. KWAB REV. 2015/12/09	QUALITY SYMBOLS ▽=0 ▽=0 ▽=0	GENERAL TOLERANCES (UNLESS SPECIFIED) mm INCH 4 PLACES ± --- ± --- 3 PLACES ± --- ± --- 2 PLACES ± 0.13 ± --- 1 PLACE ± 0.25 ± --- ANGULAR ± 1°	DIMENSION STYLE MM ONLY	SCALE 4:1	DESIGN UNITS METRIC	THIRD ANGLE PROJECTION	
	DRAWN BY CD LILLON DATE 2011/07/12 CHECKED BY CD LILLON DATE 2011/08/05 APPROVED BY SMARCEAU DATE 2011/08/08	TITLE 12 CKT HSAUTOLINK II R/A SEALED HEADER ASM FLANGED	MATERIAL NO. SEE CHART	DOCUMENT NO. SD-34857-001	SHEET NO. 3 OF 3	MOLEX INCORPORATED	
	DRAFT WHERE APPLICABLE MUST REMAIN WITHIN DIMENSIONS						
	THIS DRAWING CONTAINS INFORMATION THAT IS PROPRIETARY TO MOLEX INCORPORATED AND SHOULD NOT BE USED WITHOUT WRITTEN PERMISSION						