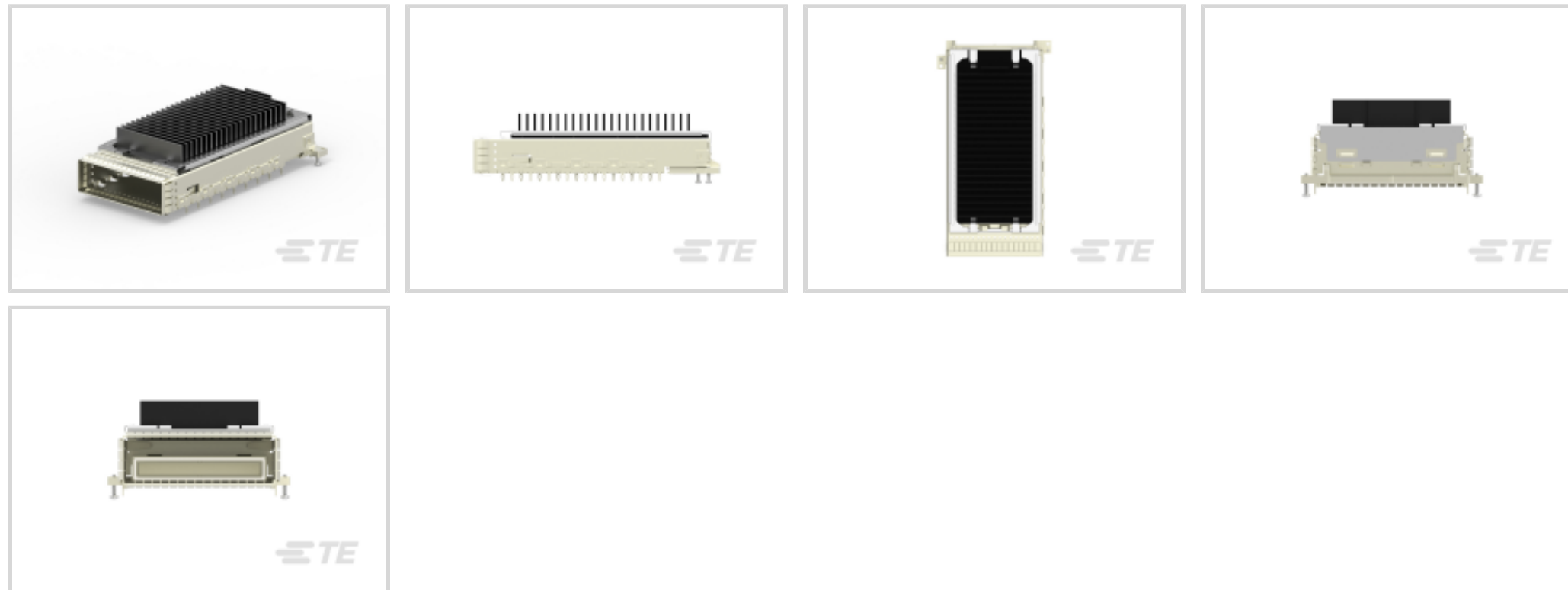




Connectors > Pluggable IO Connectors & Cages > CFP, CFP2 & CFP4



Pluggable I/O Product Type: **Cage Assembly**

Port Matrix Configuration: **1 x 1**

Thermal Accessory Type Included: **Heat Sink**

Heat Sink Style: **Side-to-Side Air Flow**

Heat Sink Height: **9.55 mm [.38 in]**

Features

Product Type Features

Form Factor	CFP2
Cage Type	Single
Product Line	CFP
Pluggable I/O Product Type	Cage Assembly
Thermal Accessory Type Included	Heat Sink
Connector System	Cable-to-Board
Sealable	No
Connector & Contact Terminates To	Printed Circuit Board

Configuration Features

Number of Fins	23
Port Matrix Configuration	1 x 1

Electrical Characteristics

Data Rate (Max)	56 Gb/s
-----------------	---------

Body Features

Plating Material	Nickel
------------------	--------



Heat Sink Finish	Anodized
Material	Aluminum Alloy
Heat Sink Style	Side-to-Side Air Flow
Heat Sink Height	9.55 mm[.38 in]

Termination Features

Termination Method to Printed Circuit Board	Through Hole - Press-Fit
---	--------------------------

Mechanical Attachment

PCB Mounting Style	Double-Sided (Belly-to-Belly)
Connector Mounting Type	Board Mount

Dimensions

Width	45.2 mm
PCB Thickness (Recommended)	3 mm
Length	93.2 mm

Usage Conditions

Operating Temperature Range	-55 – 85 °C
-----------------------------	-------------

Operation/Application

Heat Sink Compatible	Yes
For Use With Pluggable I/O Products	CFP Connector System
Circuit Application	Signal

Packaging Features

Packaging Method	Box & Tray
------------------	------------

Product Compliance

[For compliance documentation, visit the product page on TE.com>](#)

EU RoHS Directive 2011/65/EU	Compliant
EU ELV Directive 2000/53/EC	Compliant
China RoHS 2 Directive MIIT Order No 32, 2016	No Restricted Materials Above Threshold
EU REACH Regulation (EC) No. 1907/2006	Current ECHA Candidate List: JUNE 2022 (224) Candidate List Declared Against: JAN 2022 (223) SVHC > Threshold: Not Yet Reviewed
Halogen Content	Low Halogen - Br, Cl, F, I < 900 ppm per



homogenous material. Also BFR/CFR/PVC Free

Solder Process Capability

Not applicable for solder process capability

Product Compliance Disclaimer

This information is provided based on reasonable inquiry of our suppliers and represents our current actual knowledge based on the information they provided. This information is subject to change. The part numbers that TE has identified as EU RoHS compliant have a maximum concentration of 0.1% by weight in homogenous materials for lead, hexavalent chromium, mercury, PBB, PBDE, DBP, BBP, DEHP, DIBP, and 0.01% for cadmium, or qualify for an exemption to these limits as defined in the Annexes of Directive 2011/65/EU (RoHS2). Finished electrical and electronic equipment products will be CE marked as required by Directive 2011/65/EU. Components may not be CE marked. Additionally, the part numbers that TE has identified as EU ELV compliant have a maximum concentration of 0.1% by weight in homogenous materials for lead, hexavalent chromium, and mercury, and 0.01% for cadmium, or qualify for an exemption to these limits as defined in the Annexes of Directive 2000/53/EC (ELV). Regarding the REACH Regulation, the information TE provides on SVHC in articles for this part number is based on the latest European Chemicals Agency (ECHA) 'Guidance on requirements for substances in articles' posted at this URL: <https://echa.europa.eu/guidance-documents/guidance-on-reach>

Compatible Parts



TE Part # 2274845-1
CFP2 RECEPTACLE ASSEMBLY



TE Part # 2288221-1
CFP2 EMI/DUST PLUG



TE Part # 2185262-1
ASSY, EXTRACTION TL, CFP2 1X1



TE Part # 2215078-1
ASSY, STG TL, CFP2, 1X1 W HS



TE Part # 1-2293277-5
HARD WARE KIT(CAGE,HS,HS CLIP), CFP2 1X1



TE Part # 2374050-1
CFP2 HARDWARE KIT, 1X2, NO HSK

Customers Also Bought



TE Part #1-2132403-5
2X5 SFP+ EMI Sprg 4 LP Sn Enhanced



TE Part #8-1622824-7
RL73H 3A R36 1% 1K RL



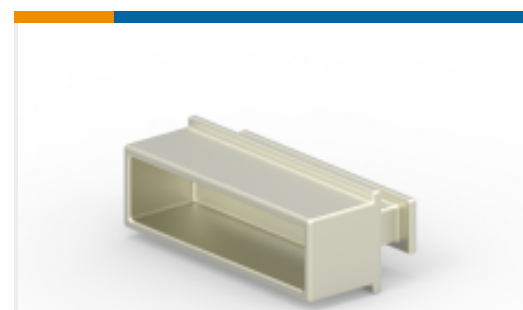
TE Part #1888653-3
2X1 OFFSET ST/JK WITH LEDS



TE Part #103308-6
026 LOPRO HDR SP 15DP



TE Part #2227326-1
CFP HW Kit, w/FtB HS, 19 fin, 10.3mm



TE Part #2288221-1
CFP2 EMI/DUST PLUG



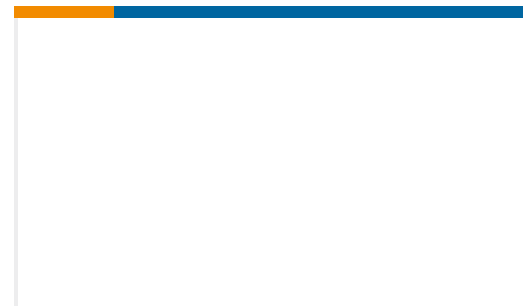
TE Part #5-146258-2
04 MODII HDR DRST B/A .100CL



TE Part #5767044-1
MICTOR,R/A,RECPT,.062,038,ASY



TE Part #2170753-9
CAGE ASSY, QSFP28 1X1, GASKET, HS



TE Part #2-1825027-4
FSMRA8JHA04=R/A,TACT PB SW,260

Documents

Product Drawings

HARDWARE KIT, CFP2, 1X1

English

CAD Files

3D PDF

3D

Customer View Model

[ENG_CVM_CVM_2274842-1_B.2d_dxf.zip](#)

English

Customer View Model

[ENG_CVM_CVM_2274842-1_B.3d_igs.zip](#)

English

Customer View Model

[ENG_CVM_CVM_2274842-1_B.3d_stp.zip](#)

English

By downloading the CAD file I accept and agree to the [Terms and Conditions](#) of use.

Datasheets & Catalog Pages

CFP2/CFP4 Connectors & Cages

English

Product Specifications

Application Specification

English

Product Environmental Compliance

Product Compliance



English

Product Compliance

English