



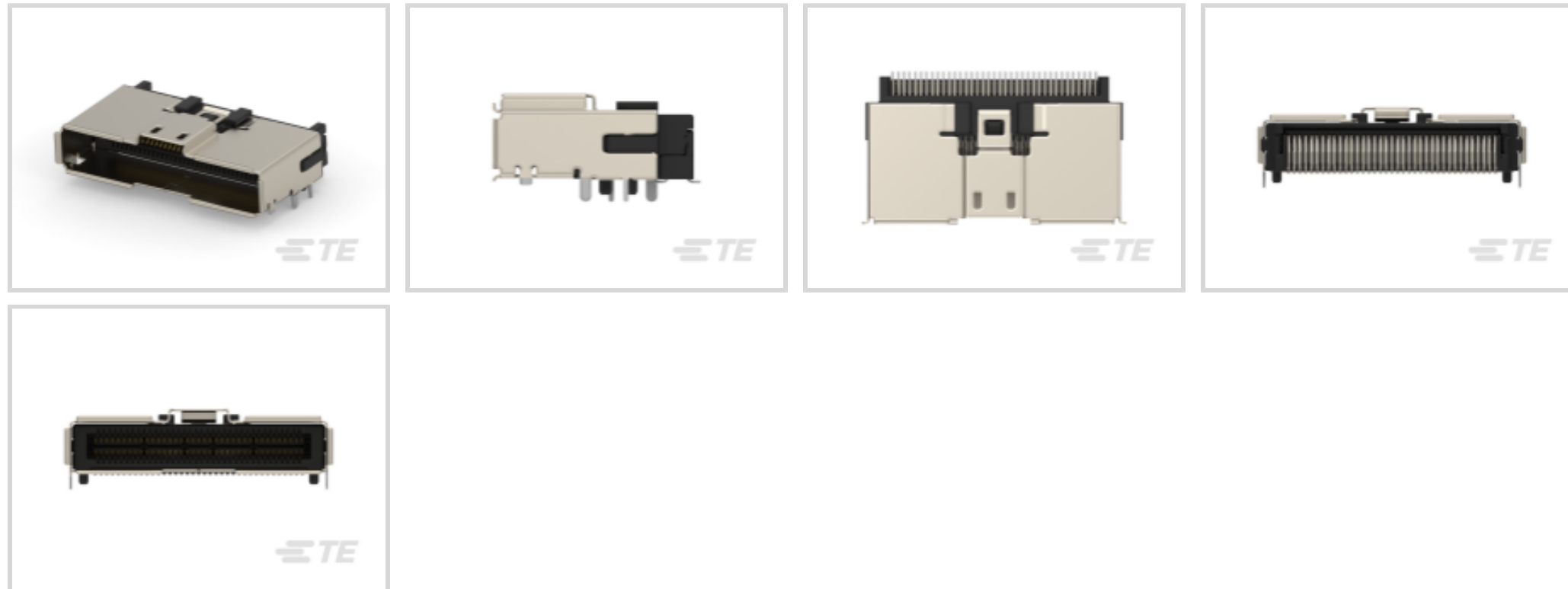
Sliver for SFF-TA-1002

TE Internal #: 2292069-1

Internal I/O Connectors, TE Sliver, Cable Plug Assembly, Right Angle, Cable-to-Board, 74 Position, 2 Row, Surface Mount, Sliver for SFF-TA-1002

[View on TE.com >](#)

Connectors > PCB Connectors > Internal I/O Connectors



Internal I/O Connector Type: **TE Sliver**

Connector Mates With: **Cable Plug Assembly**

PCB Mount Orientation: **Right Angle**

Connector System: **Cable-to-Board**

Number of Positions: **74**

Features

Product Type Features

| | |
|-----------------------------------|-----------------------|
| Internal I/O Connector Type | TE Sliver |
| Connector Mates With | Cable Plug Assembly |
| Connector System | Cable-to-Board |
| Shell | With |
| Sealable | No |
| Connector & Contact Terminates To | Printed Circuit Board |

Configuration Features

| | |
|-----------------------|-------------|
| PCB Mount Orientation | Right Angle |
| Number of Positions | 74 |
| Number of Rows | 2 |

Contact Features

| | |
|---|--------|
| Contact Mating Area Plating Material | Gold |
| Contact Underplating Material | Nickel |
| PCB Contact Termination Area Plating Material | Tin |



| | |
|-----------------------|--------------|
| Contact Base Material | Copper Alloy |
|-----------------------|--------------|

| | |
|------------------------------|------|
| Contact Current Rating (Max) | .9 A |
|------------------------------|------|

| | |
|--|---|
| Contact Mating Area Plating Material Thickness | .762 μm [30 μin] |
|--|---|

Termination Features

| | |
|---|---------------|
| Termination Method to Printed Circuit Board | Surface Mount |
|---|---------------|

Mechanical Attachment

| | |
|-------------------------|-------------|
| Connector Mounting Type | Board Mount |
|-------------------------|-------------|

Housing Features

| | |
|--------------------|----------------|
| Centerline (Pitch) | .6 mm[.023 in] |
|--------------------|----------------|

Usage Conditions

| | |
|-----------------------------|---------------------------|
| Operating Temperature Range | -55 – 85 °C[-67 – 185 °F] |
|-----------------------------|---------------------------|

Operation/Application

| | |
|---------------------|--------|
| Circuit Application | Signal |
|---------------------|--------|

Product Compliance

[For compliance documentation, visit the product page on TE.com>](#)

| | |
|------------------------------|-----------|
| EU RoHS Directive 2011/65/EU | Compliant |
|------------------------------|-----------|

| | |
|-----------------------------|-----------|
| EU ELV Directive 2000/53/EC | Compliant |
|-----------------------------|-----------|

| | |
|---|---|
| China RoHS 2 Directive MIIT Order No 32, 2016 | No Restricted Materials Above Threshold |
|---|---|

| | |
|--|--|
| EU REACH Regulation (EC) No. 1907/2006 | Current ECHA Candidate List: JUNE 2022 (224) Candidate List Declared Against: JAN 2022 (223) SVHC > Threshold: Not Yet Reviewed |
|--|--|

| | |
|-----------------|---|
| Halogen Content | Low Halogen - Br, Cl, F, I < 900 ppm per homogenous material. Also BFR/CFR/PVC Free |
|-----------------|---|

| | |
|---------------------------|--------------------------------|
| Solder Process Capability | Reflow solder capable to 260°C |
|---------------------------|--------------------------------|

Product Compliance Disclaimer

This information is provided based on reasonable inquiry of our suppliers and represents our current actual knowledge based on the information they provided. This information is subject to change. The part numbers that TE has identified as EU RoHS compliant have a maximum concentration of 0.1% by weight in homogenous materials for lead, hexavalent chromium, mercury, PBB, PBDE, DBP, BBP, DEHP, DIBP, and 0.01% for cadmium, or qualify for an exemption to these limits as defined in the Annexes of Directive 2011/65/EU (RoHS2). Finished electrical and electronic equipment products will be CE marked as required by Directive 2011/65/EU. Components may not be CE marked. Additionally, the part numbers that TE has identified as EU ELV compliant have a maximum concentration of 0.1% by weight in homogenous materials for lead, hexavalent chromium, and mercury, and 0.01% for cadmium, or qualify for an exemption to these limits

as defined in the Annexes of Directive 2000/53/EC (ELV). Regarding the REACH Regulation, the information TE provides on SVHC in articles for this part number is based on the latest European Chemicals Agency (ECHA) 'Guidance on requirements for substances in articles' posted at this URL: <https://echa.europa.eu/guidance-documents/guidance-on-reach>

Compatible Parts



TE Part # 2821385-1
SLIVER C/A, 74P, R/A TO R/A, 10GHZ, 85OHM



TE Part # 2821385-2
SLIVER C/A, 74P, R/A TO R/A, 10GHZ, 85OHM



TE Part # 2317823-1
CABLE PLUG KIT, SLIVER 74P



TE Part # 2820396-1
SLIVER C/A, 74P, STR TO STR, 10GHZ, 85OHM



TE Part # 2820396-2
SLIVER C/A, 74P, STR TO STR, 10GHZ, 85OHM



TE Part # 2821376-1
SLIVER C/A, 74P, STR TO STR, 25GHZ, 85OHM



TE Part # 2821376-2
SLIVER C/A, 74P, STR TO STR, 25GHZ, 85OHM



TE Part # 2821639-1
SLIVER C/A, 74P, STR TO R/A, 10GHZ, 85OHM



TE Part # 2821639-2
SLIVER C/A, 74P, STR TO R/A, 10GHZ, 85OHM



TE Part # 2821745-1
SLIVER C/A, 74P, R/A TO R/A, 25GHZ, 85OHM



TE Part # 2821745-2
SLIVER C/A, 74P, R/A TO R/A, 25GHZ, 85OHM



TE Part # 2821746-1
SLIVER C/A, 74P, STR TO R/A, 25GHZ, 85OHM



TE Part # 2821746-2
SLIVER C/A, 74P, STR TO R/A, 25GHZ, 85OHM



TE Part # 2821753-1
SLIVER C/A, 74P, STR TO STR, 10GHZ, 100OHM



TE Part # 2821753-2
SLIVER C/A, 74P, STR TO STR, 10GHZ, 100OHM



TE Part # 2821754-1
SLIVER C/A, 74P, R/A TO R/A, 10GHZ, 100OHM



TE Part # 2821754-2
SLIVER C/A, 74P, R/A TO R/A, 10GHZ, 100OHM



TE Part # 2821755-1
SLIVER C/A, 74P, STR TO R/A, 10GHZ, 100OHM

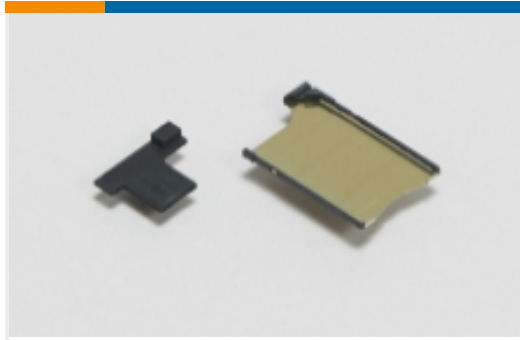


TE Part # 2821755-2
SLIVER C/A, 74P, STR TO R/A, 10GHZ, 100OHM

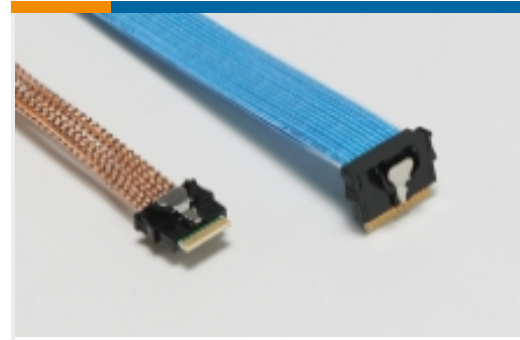


TE Part # 2821756-1
SLIVER C/A, 74P, STR TO STR, 25GHZ, 100OHM

Also in the Series | Sliver for SFF-TA-1002



Card Guide Hardware(1)



Internal I/O Cable Assemblies(109)



Internal I/O Connectors(135)

Customers Also Bought



TE Part #2821385-1
SLIVER C/A, 74P, R/A TO R/A, 10GHZ, 85OHM



TE Part #2102061-1
Mezalok, Socket, 114 p, 10 mm, 50 Au, TL



TE Part #406732-2
MJ, 10MM, 8P, SHLD, NO HSG POST, SN



TE Part #6450833-7
MBXLE R/A HDR 7ACP



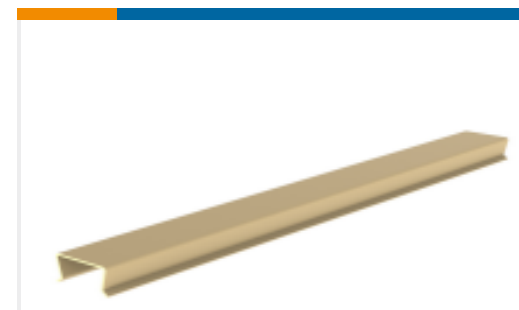
TE Part #2000974-1
Connector Kit, Plug, Module Card, MT, V66.1



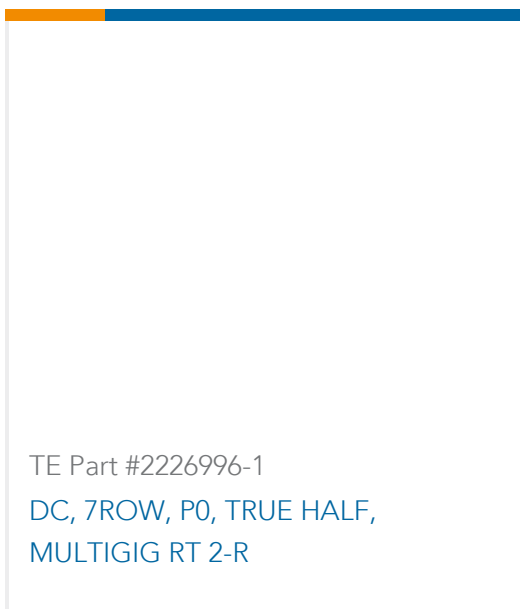
TE Part #1410188-3
MULTIGIG RT T2 7RW DC DF F-RGT



TE Part #1-1437573-5
TSPD11CGRA0=60377, 40287



TE Part #2226808-1
COVER, MULTIGIG DAUGHTERCARD, 6U



TE Part #2226996-1
DC, 7ROW, P0, TRUE HALF, MULTIGIG RT 2-R



Documents

Product Drawings

[RCPT ASSEMBLY SMT RA 74 POSN MBC](#)

English

CAD Files

[3D PDF](#)

3D

Customer View Model

[ENG_CVM_CVM_2292069-1_C.2d_dxf.zip](#)

English

Customer View Model

[ENG_CVM_CVM_2292069-1_C.3d_igs.zip](#)

English

Customer View Model

[ENG_CVM_CVM_2292069-1_C.3d_stp.zip](#)

English

By downloading the CAD file I accept and agree to the [Terms and Conditions](#) of use.

Datasheets & Catalog Pages

[Internal Cabled Interconnects Solutions Guide](#)

English

[Sliver Internal Cabled Interconnect Solutions Brochure \(Chinese\)](#)

Product Environmental Compliance

[MD_2292069-1_09192017646_dmtec](#)

English

[MD_2292069-1_09192017646_dmtec](#)

English

Agency Approvals

[UL Report](#)

English