

Superseal 1.5 Series . . . Wire To Wire Connectors . . . 6 mm Centers

Contacts

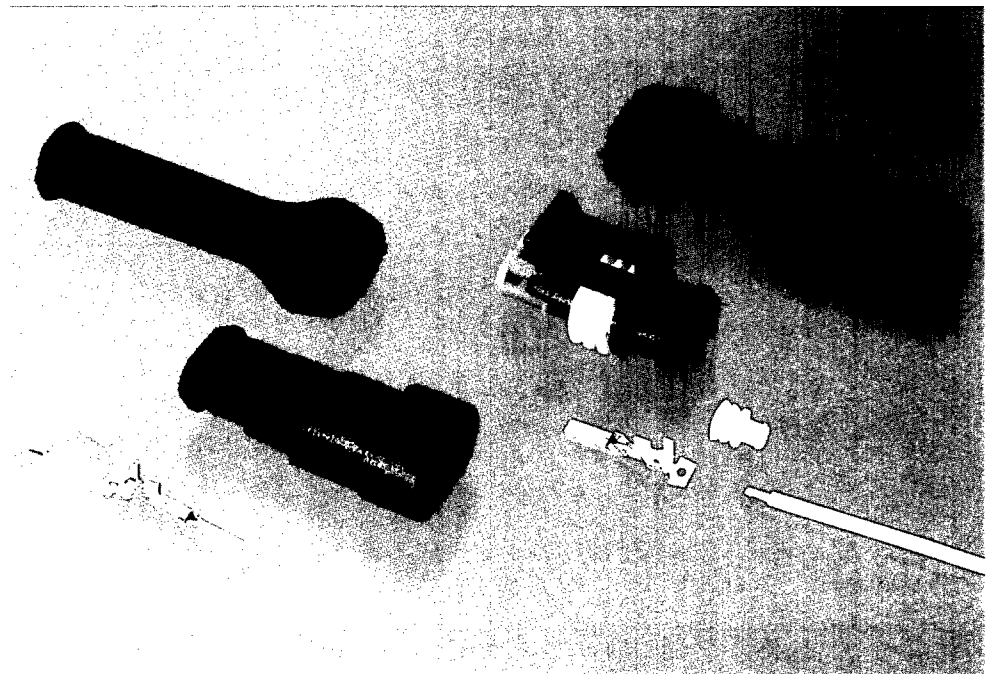
- 1.5 mm [.060 in.] wide tab contacts.
- Receptacle contacts are made from pre-tin plated phosphor bronze.
- Tab contacts are made from pre-tin plated brass.
- Lanceless contact design to reduce contact tangling.
- Wire range 0.3 - 2.0mm² [#22 - #14 AWG]

Wire Seals

- Silicon rubber material.
- For insulation diameters of 1.4 - 3.3 mm [.055 - .130 in.].
- Loose piece wire seals are crimped simultaneously with the contacts.

Connector Housings

- Housings and secondary locks produced from glass filled, 66 nylon.
- Single row connector configuration.
- Integral (factory installed) secondary locks.
- Resistant to ozone, salts, gasoline, diesel fuel, brake fluid, anti-freeze/coolant, transmission gear lubricant, and motor oil.
- Available in 1, 2, 3, 4, 5, and 6 position versions.



Designed for the automotive industry, Superseal connectors meet the sealing requirements outlined in IEC 529 and DIN 40050 I.P 6.7 specifications.

The cap and plug connector housings incorporate pre-assembled secondary locks to help insure correct and complete contact insertion into the housing and helps prevent the contacts from backing out during mating. The secondary lock cannot be closed if the contacts are not correctly inserted into the connector housing.

Cavity plugs are available for sealing unused connector cavities.

The double spring contact design (main spring and auxiliary anti-over-stress spring) insure low insertion and high contact forces.

Additional protective caps are available for the 2, 3, and 5 position connectors.

Insertion and Extraction Tools

Contact Extraction Tool

P/N 784980-1

Extraction Tool For Secondary Lock Of Cap Housing

P/N 785084-1

Secondary Lock Insertion Tools For Cap Housings

- For 1 and 2 position housings P/N 785061-1
- For 3 - 6 position housings P/N 785061-2

Product Performance

Temperature Rating

-40°C to +125°C
(including temperature rise due to current load).

Current Termination Resistance

3 mΩ (10mA test current).

Dielectric Strength

1.5 kVAC between adjacent contacts.

Product Documentation

Product Specification

108-20090

Application Specification

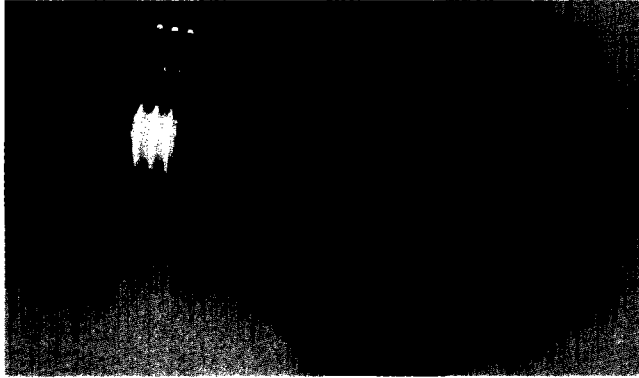
114-20045

Customer Manual

412-20000

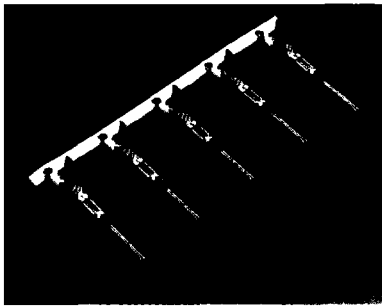
Sample Kit

889457

**Superseal 1.5 Series . . . Wire To Wire Connectors . . . 6 mm Centers** (Continued)**Connector Housings**

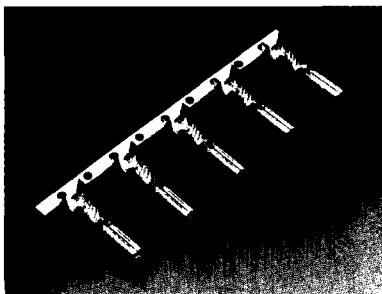
Secondary locks are factory installed on all connector housings. Plug connectors include a factory installed interface seal. Connector housings and secondary locks are made from glass filled nylon.

Positions	Plug Connector Utilizes Receptacle Contacts	Cap Connector Utilizes Tab Contacts
1	282079-2	282103-1
2	282080-1	282104-1
3	282087-1	282105-1
4	282088-1	282106-1
5	282089-1	282107-1
6	282090-1	282108-1

Tab Contacts

Tab contacts are 1.5 [.059] wide by 0.8 [.032] thick. Uncrimped contact length is approximately 22.7 [.894]

Wire Range mm ² / AWG	Wire Ins. Dia. mm / Inches	Material & Finish	Tab Part Number	
			Strip	Loose Piece
0.3-0.5 [22-20]	1.4-1.7 [.055-.067]	Pre-Tin Plated Brass	282404-1	183036-1
0.5-1.5 [20-16]	1.8-3.3 [.071-.130]		282109-1	183024-1
1.5-2.5 [16-14]	1.8-3.3 [.071-.130]		282465-1	—

Receptacle Contacts

Receptacle contacts are manufactured from 0.3 [0.12] thick material, Uncrimped contact length is approximately 16.5 [.650]

Wire Range mm ² / AWG	Wire Ins. Dia. mm / Inches	Material & Finish	Rec. Part Number	
			Strip	Loose Piece
0.3-0.5 [22-20]	1.4-1.7 [.055-.067]	Pre-Tin Plated Phos. Bronze	282403-1	183035-1
0.5-1.5 [20-16]	1.8-3.3 [.071-.130]		282110-1	183025-1
1.5-2.5 [16-14]	1.8-3.3 [.071-.130]		282466-1	—



Superseal 1.5 Series . . . Wire To Wire Connectors . . . 6 mm Centers (Continued)

Wire Seals and Cavity Plugs



Wire seals and cavity plugs are manufactured from silicon rubber. One wire seal is required per contact.

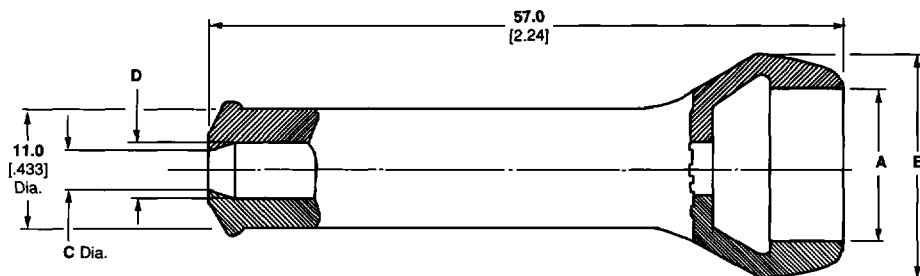
Description	Part Number	Wire Insulation Diameter mm/inches.			Seal Color
		Contact Part No.	Contact Part No.	Contact Part No.	
		Wire Size 0.3-0.5 mm ² [22-20 AWG]	Wire Size 0.5-1.5 mm ² [20-16 AWG]	Wire Size 1.5-2.5 mm ² [16-14 AWG]	
Wire Seal	281934-2	—	1.8-2.4 [.071-.094]	1.8-2.4 [.071-.094]	Yellow
	281934-3	—	2.6-3.3 [.102-.130]	2.6-3.3 [.102-.130]	Red
	281934-4	1.4-1.7 [.055-.067]	—	—	Green
Cavity Plug	282081-1	—	—	—	Red

Rubber Boots



Connector Housing Part No.	Description	Positions	Rubber Boot	Color
282080-1	Plug housing	2	880810-1	Black
282104-1	Cap Housing			
282087-1	Plug housing	3	880811-2	
282105-1	Cap Housing			
282089-1	Plug housing	5	880814-1	
282107-1	Cap Housing			

Rubber Boots . . . Dimensional Data

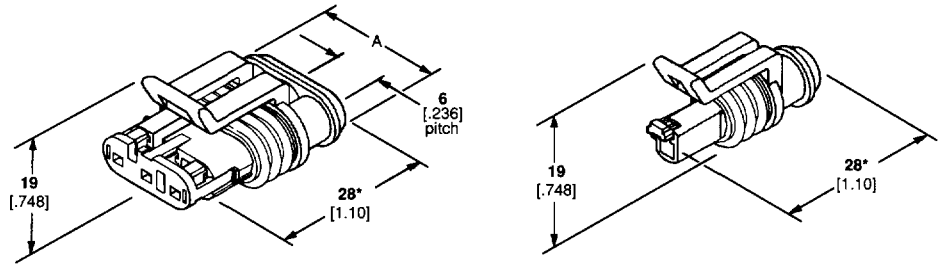


Boot Part Number	Number of Wires	Dimension "A"		Dimension "B"		Dimension "C"		Dimension "D"	
		mm	in.	mm	in.	mm	in.	mm	in.
880810-1	2	12.5	[.492]	20.5	[.807]	4.6	[0.18]	5.0	[0.20]
880811-2	3	17.5	[.689]	25.5	[1.004]	4.6	[0.18]	5.0	[0.20]
880814-1	5	27.5	[1.083]	35.0	[1.378]	6.5	[0.26]	7.0	[0.28]

Super Seal 1.5 Series . . . Wire To Wire Connectors . . . Dimension Data (Continued)

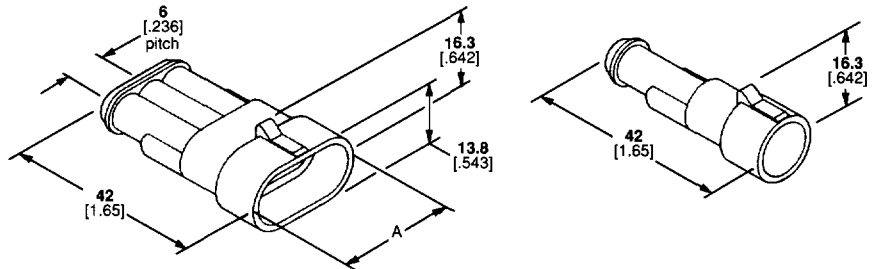
Plug Connectors

Positions	Part Number	Dimension "A"	
		mm	in.
1	282079-2	9.3	[.366]
2	282080-1	15.3	[.602]
3	282087-1	21.3	[.839]
4	282088-1	27.3	[1.07]
5	282089-1	33.3	[1.31]
6	282090-1	39.3	[1.55]

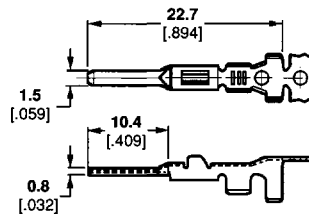


Cap Housing

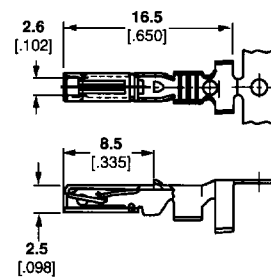
Positions	Part Number	Dimension "A"	
		mm	in.
1	282103-1	13.8	[.543]
2	282104-1	19.8	[.780]
	282105-1	25.8	[1.02]
4	282106-1	31.8	[1.25]
5	282107-1	37.8	[1.49]
6	282108-1	43.8	[1.72]



Tab Contacts



Receptacle Contacts



Wire Seal

