

2334614-2 ✓ ACTIVE

[Power Versa-Lock](#) | [Power Versa-Lock 5.0](#)

TE Internal #: 2334614-2

Rectangular Caps & Covers, Cover, Wire-to-Wire, 2 Position, .197 in [5 mm] Centerline, Sealable, Wire & Cable, Power & Signal, Power Versa-Lock 5.0

[View on TE.com >](#)



[Connectors](#) > [Rectangular Connectors](#) > [Rectangular Connector Accessories](#) > [Rectangular Caps & Covers](#)



Protection & Strain Relief Accessory Type: **Cover**

Connector System: **Wire-to-Wire**

Number of Positions: **2**

Centerline (Pitch): **5 mm [.197 in]**

Sealable: **Yes**

Features

Product Type Features

Product Type	Accessory
Protection & Strain Relief Accessory Type	Cover
Connector System	Wire-to-Wire
Sealable	Yes
Connector & Contact Terminates To	Wire & Cable

Configuration Features

Number of Positions	2
---------------------	---

Body Features

Color	Red
Material	Glass-Filled PBT

Housing Features

Centerline (Pitch)	5 mm [.197 in]
--------------------	----------------

Usage Conditions

Operating Temperature Range	-30 – 105 °C [-22 – 158 °F]
-----------------------------	-----------------------------

Operation/Application

For Use With	Cap Housing, Plug housing, Sealed Contact
Circuit Application	Power & Signal



Industry Standards

UL Flammability Rating	UL 94V-0
------------------------	----------

Packaging Features

Packaging Method	Bag/Box
------------------	---------

Product Compliance

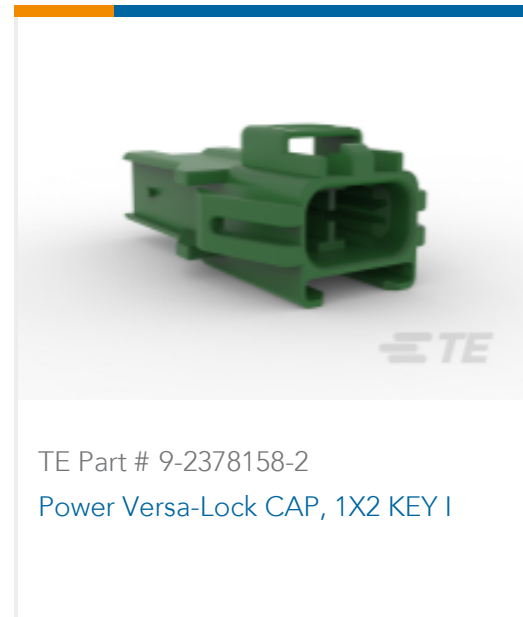
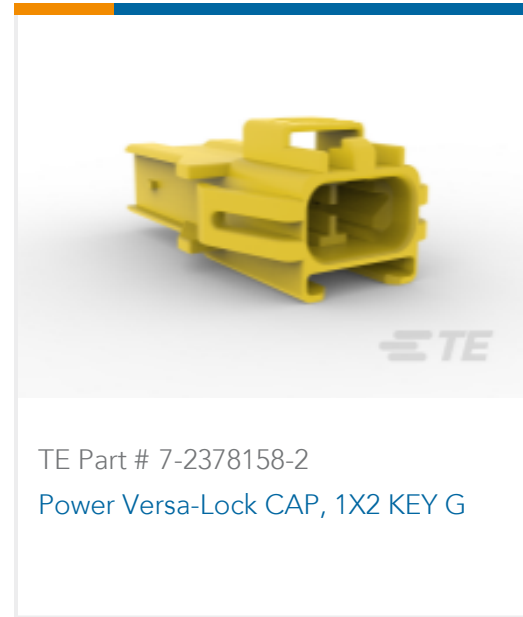
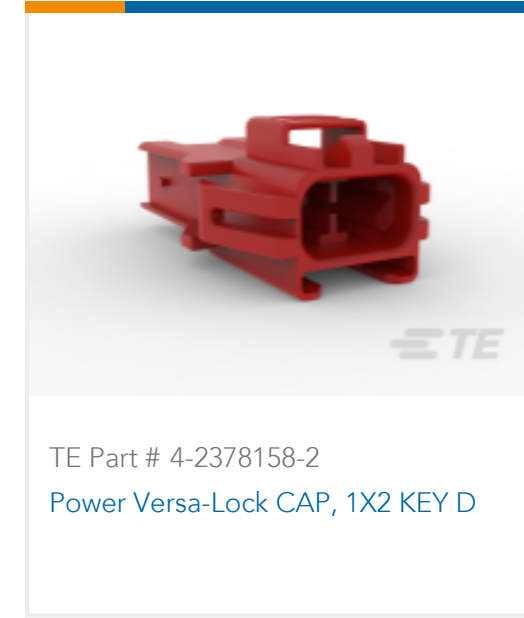
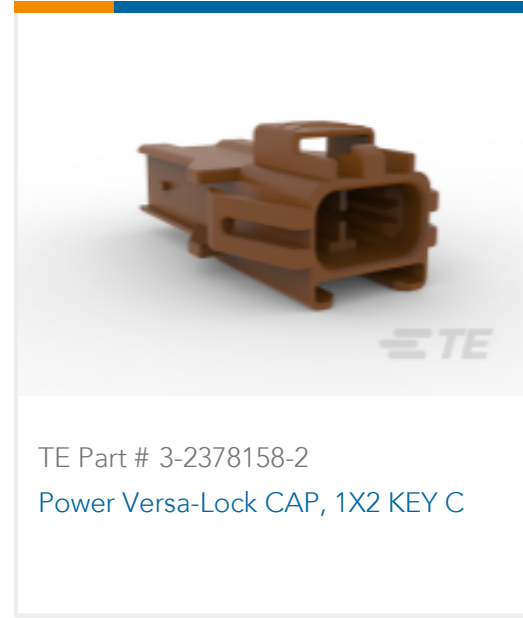
[For compliance documentation, visit the product page on TE.com>](#)

EU RoHS Directive 2011/65/EU	Compliant
EU ELV Directive 2000/53/EC	Compliant
China RoHS 2 Directive MIIT Order No 32, 2016	No Restricted Materials Above Threshold
EU REACH Regulation (EC) No. 1907/2006	Current ECHA Candidate List: JUNE 2022 (224) Candidate List Declared Against: JAN 2022 (223) SVHC > Threshold: Not Yet Reviewed
Halogen Content	Not Low Halogen - contains Br or Cl > 900 ppm.
Solder Process Capability	Not reviewed for solder process capability

Product Compliance Disclaimer

This information is provided based on reasonable inquiry of our suppliers and represents our current actual knowledge based on the information they provided. This information is subject to change. The part numbers that TE has identified as EU RoHS compliant have a maximum concentration of 0.1% by weight in homogenous materials for lead, hexavalent chromium, mercury, PBB, PBDE, DBP, BBP, DEHP, DIBP, and 0.01% for cadmium, or qualify for an exemption to these limits as defined in the Annexes of Directive 2011/65/EU (RoHS2). Finished electrical and electronic equipment products will be CE marked as required by Directive 2011/65/EU. Components may not be CE marked. Additionally, the part numbers that TE has identified as EU ELV compliant have a maximum concentration of 0.1% by weight in homogenous materials for lead, hexavalent chromium, and mercury, and 0.01% for cadmium, or qualify for an exemption to these limits as defined in the Annexes of Directive 2000/53/EC (ELV). Regarding the REACH Regulation, the information TE provides on SVHC in articles for this part number is based on the latest European Chemicals Agency (ECHA) 'Guidance on requirements for substances in articles' posted at this URL: <https://echa.europa.eu/guidance-documents/guidance-on-reach>

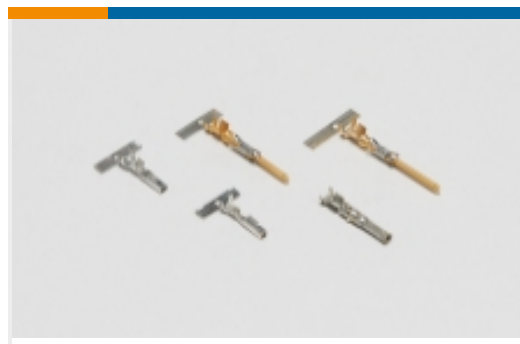
Compatible Parts



Also in the Series | **Power Versa-Lock 5.0**



Insertion & Extraction Tools(2)



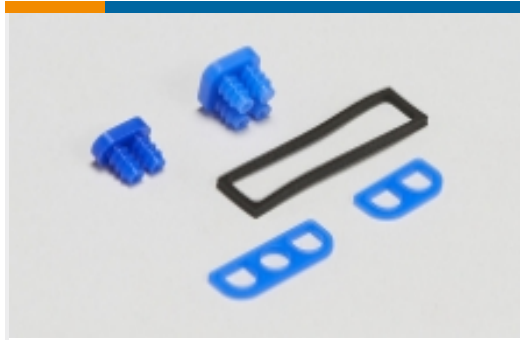
Power Contacts(12)



Rectangular Caps & Covers(3)



Rectangular Connector Locking(4)

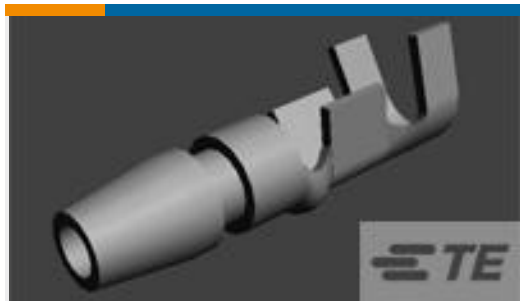


Rectangular Connector Seals(7)

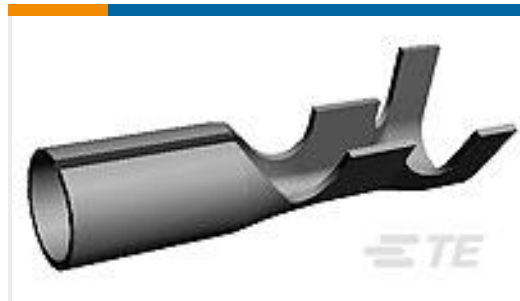


Rectangular Power Connectors(33)

Customers Also Bought



TE Part #170020-1
SHUR PLUG 20-14 MM2 TPBR



TE Part #170021-1
SHUR PLUG RECEPTACLE 20-16 AWG TPBR



TE Part #3-1803000-6
ANVIL, COMBINATION, END FEED



TE Part #2325349-3
Power Versa-Lock REAR SEAL, 1X3, LargeID



TE Part #C17298-000
WP-381064-10-9



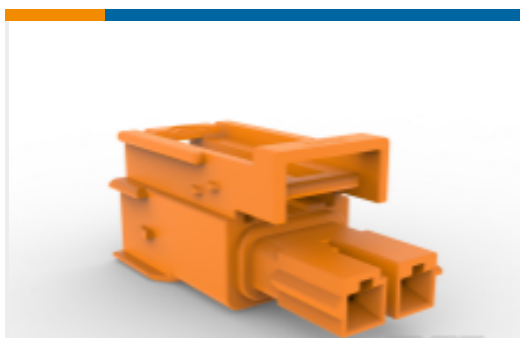
TE Part #170801-4
FF 110 REC HSG 4P NYLON NATURAL



TE Part #1-2332040-2
Power Versa-Lock PLUG, 1X2 KEY A



TE Part #3-2332040-2
Power Versa-Lock PLUG, 1X2 KEY C



TE Part #5-2332040-2
Power Versa-Lock PLUG, 1X2 KEY E

Documents



CAD Files

3D PDF

3D

Customer View Model

[ENG_CVM_CVM_2334614-2_A.2d_dxf.zip](#)

English

Customer View Model

[ENG_CVM_CVM_2334614-2_A.3d_igs.zip](#)

English

Customer View Model

[ENG_CVM_CVM_2334614-2_A.3d_stp.zip](#)

English

By downloading the CAD file I accept and agree to the [Terms and Conditions](#) of use.

Product Specifications

Application Specification

English

Instruction Sheets

Instruction Sheet (U.S.)

English