

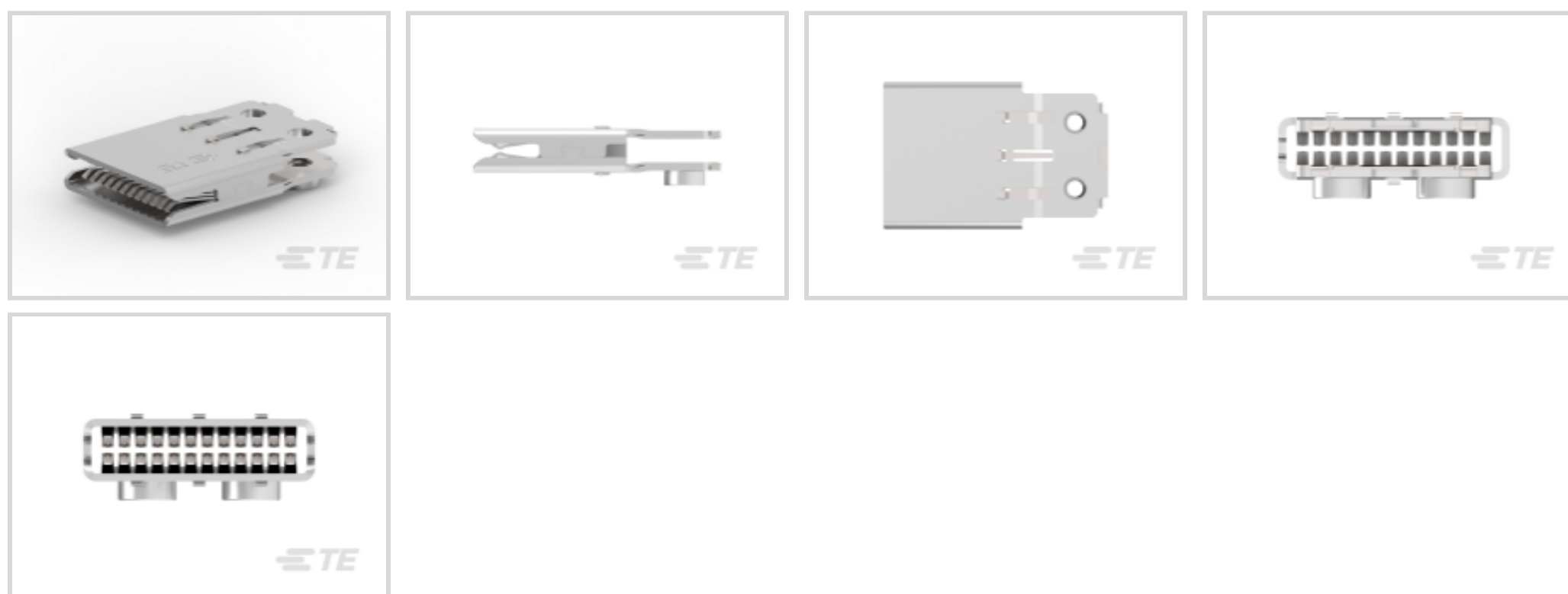
TE Internal #: 2204273-1

Busbar Connectors, Bus Bar-to-Bus Bar, 1 Position, Bus Bar, Stainless Steel, Mating Alignment, Screw Mount, Bag & Box, In-Line, Copper Alloy

[View on TE.com >](#)



Connectors > Power Connectors > Power Busbar Connectors > Busbar Connectors



Connector System: **Bus Bar-to-Bus Bar**

Number of Positions: **1**

Sealable: **No**

Connector & Contact Terminates To: **Bus Bar**

Mating Conductor Thickness: **3.18 mm [ .125 in ]**

## Features

### Product Type Features

Product Type	Pluggable Bus Bar Connector
Connector System	Bus Bar-to-Bus Bar
Sealable	No
Connector & Contact Terminates To	Bus Bar
Connector & Housing Type	Receptacle

### Configuration Features

Number of Positions	1
Mating & Unmating Configuration	Normal

### Electrical Characteristics

Operating Voltage	600 VAC
Operating Voltage Reference	AC/DC
Voltage Rating	12 VDC
Voltage Drop	13 mV

### Body Features



Bus Bar Contact Plating Material	Silver
----------------------------------	--------

### Contact Features

Contact Transmits (Typical)	Power
-----------------------------	-------

Underplate Material Thickness	1.27 $\mu$ m[50 $\mu$ in]
-------------------------------	---------------------------

Contact Design	Multiple Contact Point
----------------	------------------------

Contact Plating Thickness	3 $\mu$ m[118 $\mu$ in]
---------------------------	-------------------------

Contact Underplating Material	Nickel
-------------------------------	--------

Contact Base Material	Copper Alloy
-----------------------	--------------

Contact Current Rating (Max)	500 A
------------------------------	-------

Contact Length	64.7 mm[2.54 in]
----------------	------------------

Bus Bar Contact Style	Socket
-----------------------	--------

### Mechanical Attachment

Mating Alignment Type	Blindmate
-----------------------	-----------

Mating Alignment	With
------------------	------

Bus Bar Connector Mounting Retention	With
--------------------------------------	------

Bus Bar Mount Retention Type	Screw Mount
------------------------------	-------------

Bus Bar Mount Orientation	In-Line
---------------------------	---------

Connector Mounting Type	Bus Bar Mount
-------------------------	---------------

### Housing Features

Housing Material	Stainless Steel
------------------	-----------------

### Dimensions

Height	28.45 mm[1.12 in]
--------	-------------------

Length	83.67 mm[3.29 in]
--------	-------------------

Width	58.17 mm[2.29 in]
-------	-------------------

Wire Size	2 AWG
-----------	-------

### Usage Conditions

Operating Temperature Range	-55 – 105 $^{\circ}$ C[-67 – 221 $^{\circ}$ F]
-----------------------------	--

### Operation/Application

Circuit Application	Power
---------------------	-------

### Industry Standards

Agency/Standard	UL
-----------------	----

### Packaging Features



Packaging Method	Bag & Box
------------------	-----------

**Other**

Mating Conductor Thickness	3.18 mm[.125 in]
----------------------------	------------------

**Product Compliance**

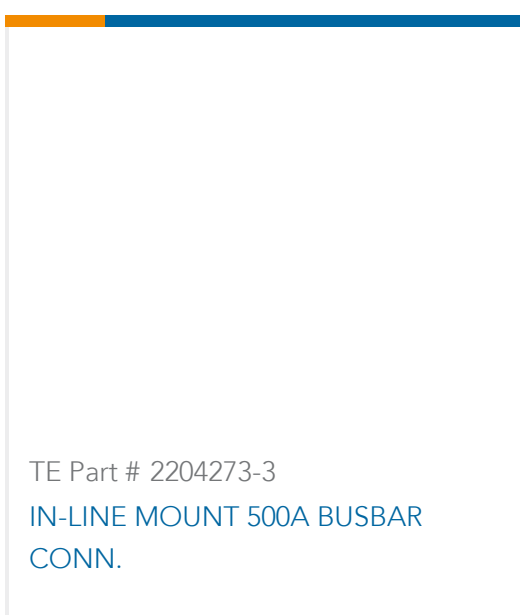
[For compliance documentation, visit the product page on TE.com>](#)

EU RoHS Directive 2011/65/EU	Compliant
EU ELV Directive 2000/53/EC	Compliant
China RoHS 2 Directive MIIT Order No 32, 2016	No Restricted Materials Above Threshold
EU REACH Regulation (EC) No. 1907/2006	Current ECHA Candidate List: JUNE 2022 (224) Candidate List Declared Against: JUL 2021 (219) SVHC > Threshold: Not Yet Reviewed
Halogen Content	Low Halogen - Br, Cl, F, I < 900 ppm per homogenous material. Also BFR/CFR/PVC Free
Solder Process Capability	Not applicable for solder process capability

Product Compliance Disclaimer

This information is provided based on reasonable inquiry of our suppliers and represents our current actual knowledge based on the information they provided. This information is subject to change. The part numbers that TE has identified as EU RoHS compliant have a maximum concentration of 0.1% by weight in homogenous materials for lead, hexavalent chromium, mercury, PBB, PBDE, DBP, BBP, DEHP, DIBP, and 0.01% for cadmium, or qualify for an exemption to these limits as defined in the Annexes of Directive 2011/65/EU (RoHS2). Finished electrical and electronic equipment products will be CE marked as required by Directive 2011/65/EU. Components may not be CE marked. Additionally, the part numbers that TE has identified as EU ELV compliant have a maximum concentration of 0.1% by weight in homogenous materials for lead, hexavalent chromium, and mercury, and 0.01% for cadmium, or qualify for an exemption to these limits as defined in the Annexes of Directive 2000/53/EC (ELV). Regarding the REACH Regulation, the information TE provides on SVHC in articles for this part number is based on the latest European Chemicals Agency (ECHA) 'Guidance on requirements for substances in articles' posted at this URL: <https://echa.europa.eu/guidance-documents/guidance-on-reach>

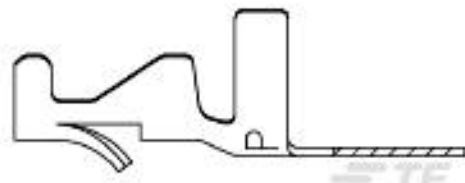
**Compatible Parts**



## Customers Also Bought



TE Part #1-480319-0  
02P CMNL CAP HSG NATL



TE Part #3-640311-1  
MINI AMP-IN 22-18 AWG .  
008PTPPHBZ



TE Part #207305-1  
24 POS SQ GRID METRIMATE-RCPT

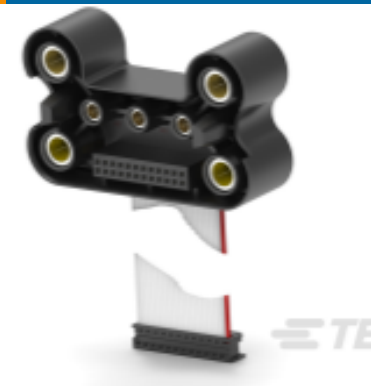


TE Part #1926736-2  
MiniPAK HDL, 25s10p, RA Plug,



TE Part #6-6450830-1  
MBXL R/A HDR  
3HDP+1LP+24S+1LP+3HDP

TE Part #2-6450831-1  
MBXLE R/A HDR 24S



TE Part #1926124-1  
Assm Socket CustomDWR4-#43-#82

TE Part #2159452-1  
C/A, TERMINAL + 14 AWG WIRE+  
HALF STRIPP

TE Part #2159453-1  
C/A, TERMINAL + 14 AWG WIRE+  
HALF STRIPP

## Documents

### Product Drawings

[IN-LINE MOUNT 500A BUSBAR CONN.](#)

English

### CAD Files

[3D PDF](#)

3D

Customer View Model

[ENG\\_CVM\\_CVM\\_2204273-1\\_A2.2d\\_dxf.zip](#)

English

Customer View Model

[ENG\\_CVM\\_CVM\\_2204273-1\\_A2.3d\\_igs.zip](#)

English

Customer View Model

[ENG\\_CVM\\_CVM\\_2204273-1\\_A2.3d\\_stp.zip](#)

English

By downloading the CAD file I accept and agree to the [Terms and Conditions](#) of use.



**Product Specifications**

**Application Specification**

English

---

**Agency Approvals**

**UL Report**

English