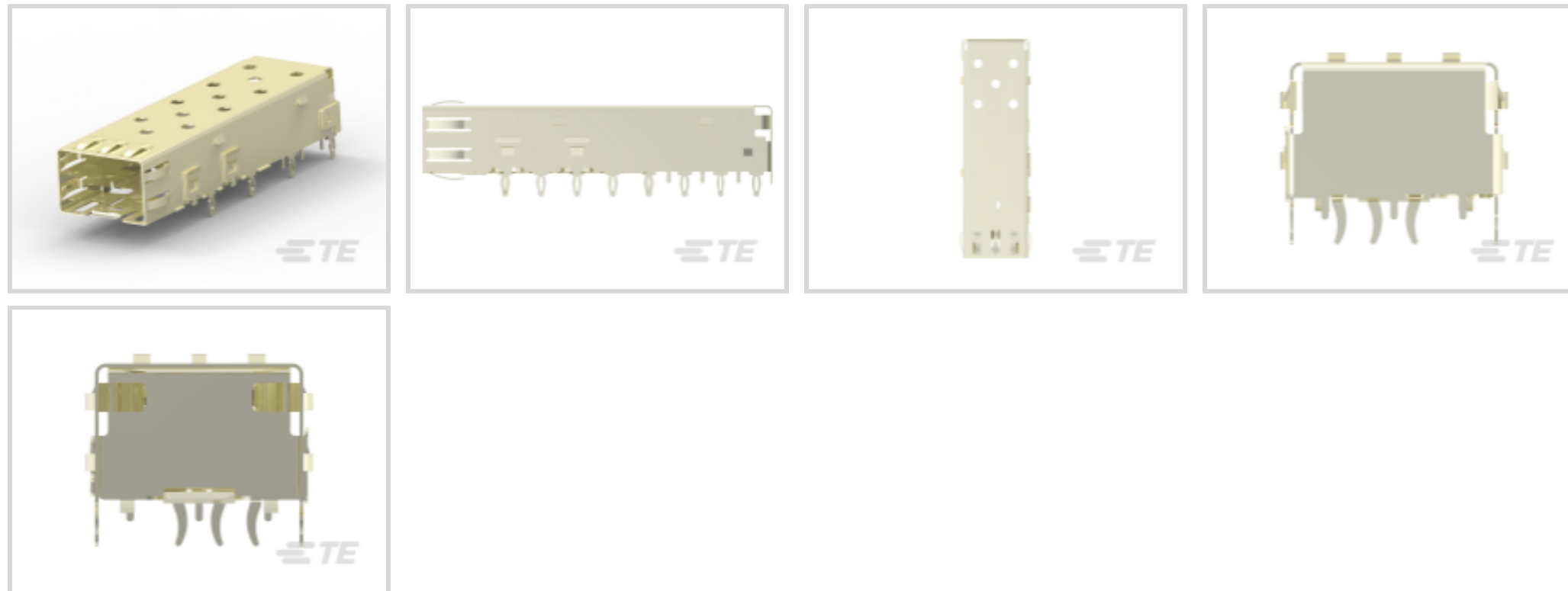




TE Internal #: 2227302-1  
 SFP, SFP+ & zSFP+, Cage, Data Rate (Max) 4 Gb/s, External Springs, SFP, 1 x 1, Through Hole - Press-Fit Mount, 1 Port, Cable-to-Board

[View on TE.com >](#)

Connectors > Pluggable IO Connectors & Cages > SFP, SFP+ & zSFP+



Pluggable I/O Product Type: **Cage**

Data Rate (Max): **4 Gb/s**

EMI Containment Feature Type: **External Springs**

Pluggable I/O Applications: **SFP**

Included Lightpipe: **No**

## Features

### Product Type Features

Form Factor	SFP
Cage Type	Single
Pluggable I/O Product Type	Cage
Connector System	Cable-to-Board
Sealable	No
Connector & Contact Terminates To	Printed Circuit Board

### Configuration Features

Port Matrix Configuration	1 x 1
Number of Ports	1

### Electrical Characteristics

Data Rate (Max)	4 Gb/s
-----------------	--------

### Termination Features

Termination Method to Printed Circuit Board	Through Hole - Press-Fit
---	--------------------------

### Mechanical Attachment



PCB Mounting Style	Through Hole - Press-Fit
--------------------	--------------------------

Connector Mounting Type	Board Mount
-------------------------	-------------

### Housing Features

Cage Material	Stainless Steel
---------------	-----------------

### Dimensions

Tail Length	3 mm[.118 in]
-------------	---------------

PCB Thickness (Recommended)	1.5 mm[.059 in]
-----------------------------	-----------------

### Usage Conditions

Operating Temperature Range	-55 – 85 °C[-67 – 185 °F]
-----------------------------	---------------------------

### Operation/Application

Heat Sink Compatible	No
----------------------	----

For Use With Pluggable I/O Products	SFP SMT Connector
-------------------------------------	-------------------

Pluggable I/O Applications	SFP
----------------------------	-----

### Packaging Features

Packaging Method	Box & Tray, Box
------------------	-----------------

### Other

EMI Containment Feature Type	External Springs
------------------------------	------------------

Included Lightpipe	No
--------------------	----

Comment	11 Press-Fit Tails
---------	--------------------

### Product Compliance

[For compliance documentation, visit the product page on TE.com>](#)

EU RoHS Directive 2011/65/EU	Compliant
------------------------------	-----------

EU ELV Directive 2000/53/EC	Compliant
-----------------------------	-----------

China RoHS 2 Directive MIIT Order No 32, 2016	No Restricted Materials Above Threshold
---	---

EU REACH Regulation (EC) No. 1907/2006	Current ECHA Candidate List: JUNE 2022 (224) Candidate List Declared Against: JAN 2022 (223) SVHC > Threshold: Not Yet Reviewed
--	--

Halogen Content	Low Halogen - Br, Cl, F, I < 900 ppm per homogenous material. Also BFR/CFR/PVC Free
-----------------	---

Solder Process Capability	Not applicable for solder process capability
---------------------------	--



Product Compliance Disclaimer

This information is provided based on reasonable inquiry of our suppliers and represents our current actual knowledge based on the information they provided. This information is subject to change. The part numbers that TE has identified as EU RoHS compliant have a maximum concentration of 0.1% by weight in homogenous materials for lead, hexavalent chromium, mercury, PBB, PBDE, DBP, BBP, DEHP, DIBP, and 0.01% for cadmium, or qualify for an exemption to these limits as defined in the Annexes of Directive 2011/65/EU (RoHS2). Finished electrical and electronic equipment products will be CE marked as required by Directive 2011/65/EU. Components may not be CE marked. Additionally, the part numbers that TE has identified as EU ELV compliant have a maximum concentration of 0.1% by weight in homogenous materials for lead, hexavalent chromium, and mercury, and 0.01% for cadmium, or qualify for an exemption to these limits as defined in the Annexes of Directive 2000/53/EC (ELV). Regarding the REACH Regulation, the information TE provides on SVHC in articles for this part number is based on the latest European Chemicals Agency (ECHA) 'Guidance on requirements for substances in articles' posted at this URL: <https://echa.europa.eu/guidance-documents/guidance-on-reach>

Compatible Parts



TE Part # CAT-SF59-C76264  
SFP Connectors



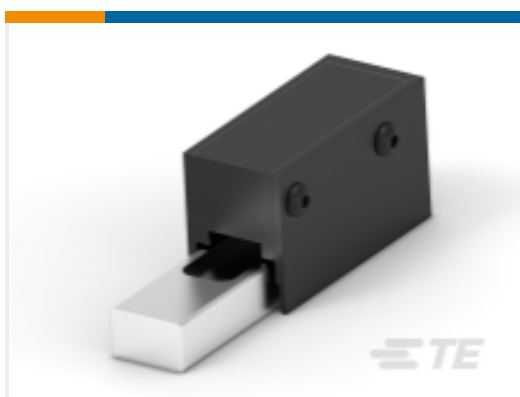
TE Part # 1367147-1  
SFP COVER, UNPLATED



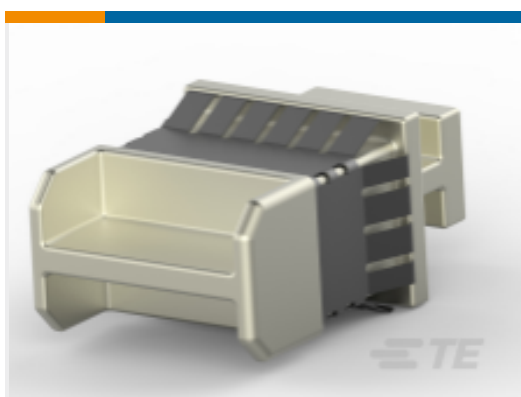
TE Part # 1367147-3  
SFP COVER, UNPL, NO LOGO



TE Part # 1761394-1  
DUST COVER, SFP, GANGED & STACKED



TE Part # 2215077-3  
ASSY, SEATING TOOL, SFP



TE Part # 1888901-1  
SFP+ EMI Plug

Customers Also Bought



TE Part #5223986-3  
UPM KEYED GUIDE MODULE



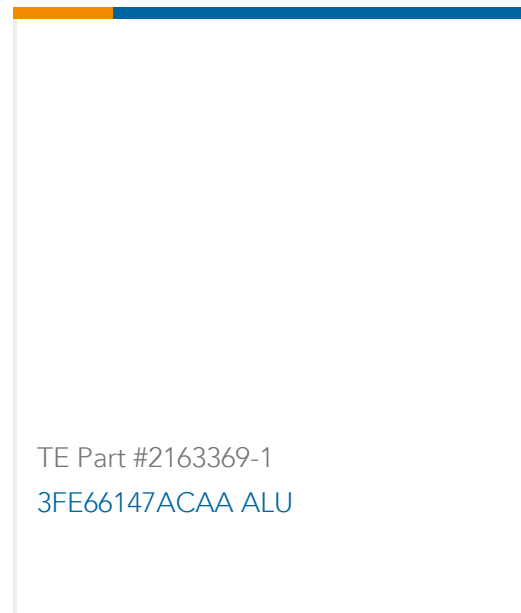
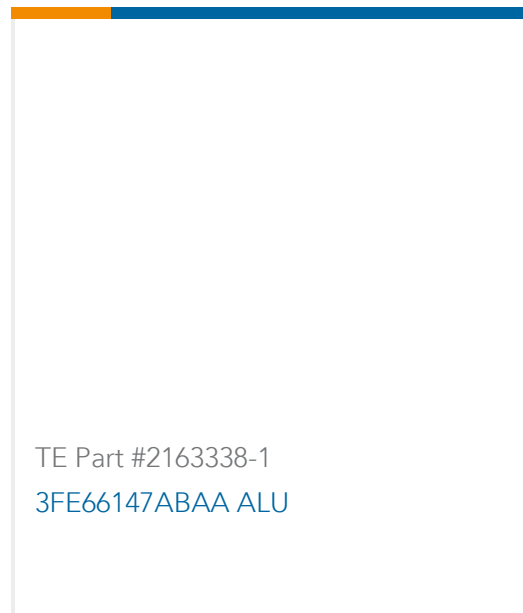
TE Part #5786554-5  
50 50SR VRT RCPT,L,R,ACT PIN



TE Part #2007800-2  
IMP100S,H,V3P16C,UG,OE46,4.9



TE Part #6600323-8  
MBXL VERT HDR 64S+11P



## Documents

### Product Drawings

[CAGE ASSY, PRESS FIT, SFP](#)

English

### CAD Files

[3D PDF](#)

3D

Customer View Model

[ENG\\_CVM\\_CVM\\_2227302-1\\_A.2d\\_dxf.zip](#)

English

Customer View Model

[ENG\\_CVM\\_CVM\\_2227302-1\\_A.3d\\_igs.zip](#)

English

Customer View Model

[ENG\\_CVM\\_CVM\\_2227302-1\\_A.3d\\_stp.zip](#)

English

By downloading the CAD file I accept and agree to the [Terms and Conditions](#) of use.

### Product Specifications

[Application Specification](#)

English

### Product Environmental Compliance

[MD\\_2227302-1\\_022720191133\\_dmtec](#)

English

[MD\\_2227302-1\\_022720191133\\_dmtec](#)

English