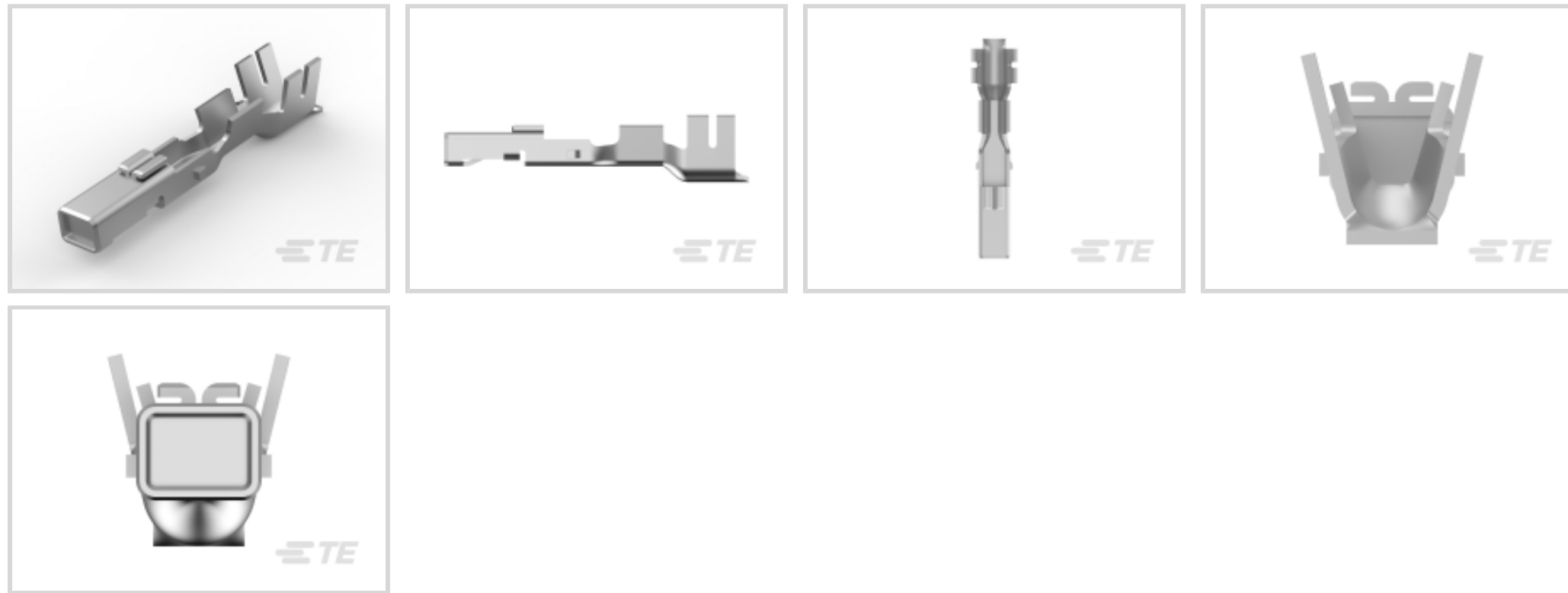




TE Internal #: 2232902-1
 Power Contacts, Contact, 300 VAC, Pre-Tin, 26 – 22 AWG Wire Size,
 .13 – .33 mm² Wire Size, Wire-to-Wire, Wire & Cable, Crimp, Power,
 Receptacle

[View on TE.com >](#)

Connectors > Power Connectors > Power Contacts > Power Double Lock Receptacle



Power Contact Type: **Contact**
 Operating Voltage: **300 VAC**
 Contact Mating Area Plating Material: **Pre-Tin**
 Wire Size: **.13 – .33 mm²**

[All Power Double Lock Receptacle \(6\)](#)

Features

Product Type Features

Power Contact Type	Contact
Connector System	Wire-to-Wire
Connector & Contact Terminates To	Wire & Cable

Electrical Characteristics

Operating Voltage	300 VAC
-------------------	---------

Contact Features

Contact Mating Area Plating Material	Pre-Tin
Contact Current Rating (Max)	5 A
Contact Type	Receptacle
Contact Retention Within Housing	With
Mating Tab Width	1.5 mm[.06 in]
Mating Tab Thickness	.5 mm[.02 in]
Contact Base Material	Copper Alloy
Wire Contact Termination Area Plating Thickness	.8 μm[31.49 μin]



Wire Contact Termination Area Plating Material	Pre-Tin
Wire Contact Termination Area Plating Material Finish	Bright
Contact Orientation	Straight

Termination Features

Termination Method to Wire & Cable	Crimp
------------------------------------	-------

Mechanical Attachment

Contact Retention Type Within Housing	Locking Lance
Connector Mounting Type	Cable Mount (Free-Hanging)
Wire Insulation Support	With

Dimensions

Wire Size	.13 – .33 mm ²
Accepts Wire Insulation Diameter Range	1.3 – 2 mm [.051 – .079 in]

Usage Conditions

Operating Temperature Range	-30 – 105 °C [-22 – 221 °F]
-----------------------------	-----------------------------

Operation/Application

Circuit Application	Power
---------------------	-------

Industry Standards

Glow Wire Rating	Standard Part - Not Glow Wire
------------------	-------------------------------

Packaging Features

Packaging Method	Reel
Packaging Quantity	5000

Other

Wire/Cable Type	Discrete Wire
Wire Type	Stranded
For Use With	Plug Housing

Product Compliance

For compliance documentation, visit the product page on [TE.com](https://www.te.com)>

EU RoHS Directive 2011/65/EU	Compliant
EU ELV Directive 2000/53/EC	Compliant
China RoHS 2 Directive MIIT Order No 32, 2016	No Restricted Materials Above Threshold



EU REACH Regulation (EC) No. 1907/2006

Current ECHA Candidate List: JUNE 2022 (224)

Candidate List Declared Against: JAN 2022 (223)

SVHC > Threshold:
Not Yet Reviewed

Halogen Content

Low Halogen - Br, Cl, F, I < 900 ppm per homogenous material. Also BFR/CFR/PVC Free

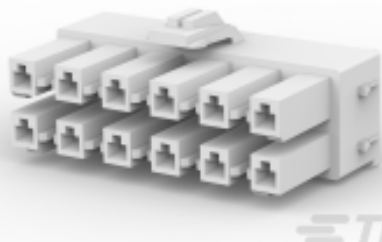
Solder Process Capability

Not reviewed for solder process capability

Product Compliance Disclaimer

This information is provided based on reasonable inquiry of our suppliers and represents our current actual knowledge based on the information they provided. This information is subject to change. The part numbers that TE has identified as EU RoHS compliant have a maximum concentration of 0.1% by weight in homogenous materials for lead, hexavalent chromium, mercury, PBB, PBDE, DBP, BBP, DEHP, DIBP, and 0.01% for cadmium, or qualify for an exemption to these limits as defined in the Annexes of Directive 2011/65/EU (RoHS2). Finished electrical and electronic equipment products will be CE marked as required by Directive 2011/65/EU. Components may not be CE marked. Additionally, the part numbers that TE has identified as EU ELV compliant have a maximum concentration of 0.1% by weight in homogenous materials for lead, hexavalent chromium, and mercury, and 0.01% for cadmium, or qualify for an exemption to these limits as defined in the Annexes of Directive 2000/53/EC (ELV). Regarding the REACH Regulation, the information TE provides on SVHC in articles for this part number is based on the latest European Chemicals Agency (ECHA) 'Guidance on requirements for substances in articles' posted at this URL: <https://echa.europa.eu/guidance-documents/guidance-on-reach>


Compatible Parts



TE Part # 917354-1
AMP POWER D/LOCK PLUG HDR 12P



TE Part # 2305570-1
TERMINAL CUTTER, SIDE FEED



TE Part # CAT-P87024-P729
STD Temp Power Double Lock Plug



TE Part # CAT-P87024-P729A
Glow Wire Power Double Lock Plug



TE Part # 2836138-1
OCEAN_2.0_Applicator-S-055F108OV



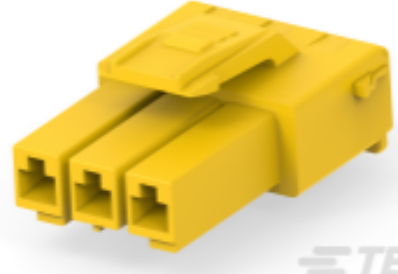
TE Part # 2836138-2
OCEAN_2.0_Applicator-S-055F108OV



TE Part # 5-368571-1
FOAMING PROOF PLUG 3POS NAT



TE Part # 5-368571-2
FOAMING PROOF PLUG 3POS RED



TE Part # 5-368571-4
FOAMING PROOF PLUG 3POS YEL



TE Part # 2108960-1
DISTRIBUTION CONNECTOR



TE Part # 2367063-1
POWER DBL LOCK PLUG HSG 2P

Customers Also Bought



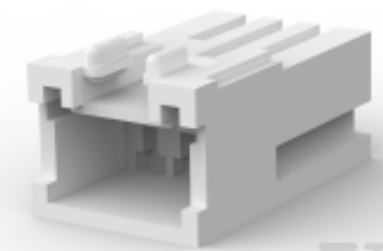
TE Part #179467-1
AMP POWER DBL LOCK CAP HSG 8P



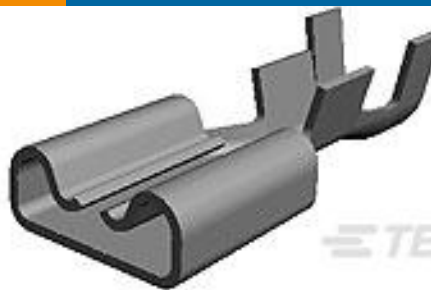
TE Part #5-1971772-3
PTL 1X3 CAP PANEL MT HITEMP KEY
A LGR



TE Part #917702-1
Signal Double Lock TPA



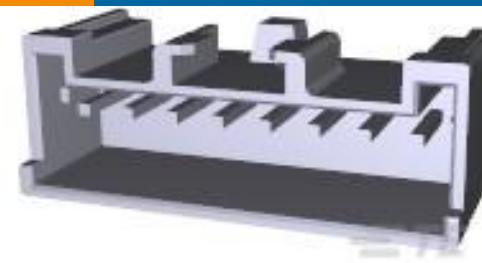
TE Part #316088-1
STD Temp Signal Double Lock Cap



TE Part #1742198-1
250 FASTON,REC.,18-14 AWG,NPST



TE Part #1746076-1
2.5SDL DBL 14P HSG NAT



TE Part #917786-1
2.5 S.D.L POST HDR ASY 8P STD



TE Part #917789-1
2.5 S.D.L POST HDR ASY 11P STD

Documents

Product Drawings

AMP POWER DBL LOCK REC (S)

English

CAD Files

3D PDF

3D

Customer View Model

[ENG_CVM_CVM_2232902-1_B.2d_dxf.zip](#)

English

Customer View Model

[ENG_CVM_CVM_2232902-1_B.3d_igs.zip](#)

English

Customer View Model

[ENG_CVM_CVM_2232902-1_B.3d_stp.zip](#)

English

By downloading the CAD file I accept and agree to the [Terms and Conditions](#) of use.



Product Specifications

Application Specification

English

Product Environmental Compliance

MD_2232902-1_11302018129_dmtec

English

MD_2232902-1_11302018129_dmtec

English