



Sliver for SFF-TA-1002

TE Internal #: 2292096-1

Internal I/O Connectors, TE Sliver, Cable Plug Assembly, Vertical, Cable-to-Board, 50 Position, 2 Row, Surface Mount, Sliver for SFF-TA-1002

[View on TE.com >](#)

Connectors > PCB Connectors > Internal I/O Connectors



Internal I/O Connector Type: **TE Sliver**

Connector Mates With: **Cable Plug Assembly**

PCB Mount Orientation: **Vertical**

Connector System: **Cable-to-Board**

Number of Positions: **50**

Features

Product Type Features

Internal I/O Connector Type	TE Sliver
Connector Mates With	Cable Plug Assembly
Connector System	Cable-to-Board
Shell	With
Sealable	No
Connector & Contact Terminates To	Printed Circuit Board

Configuration Features

PCB Mount Orientation	Vertical
Number of Positions	50
Number of Rows	2

Contact Features

Contact Mating Area Plating Material	Gold
Contact Underplating Material	Nickel
PCB Contact Termination Area Plating Material	Tin



Contact Base Material	Copper Alloy
-----------------------	--------------

Contact Current Rating (Max)	.9 A
------------------------------	------

Contact Mating Area Plating Material Thickness	.762 μ m[30 μ in]
--	---------------------------

Termination Features

Termination Method to Printed Circuit Board	Surface Mount
---	---------------

Mechanical Attachment

Connector Mounting Type	Board Mount
-------------------------	-------------

Housing Features

Centerline (Pitch)	.6 mm[.023 in]
--------------------	----------------

Usage Conditions

Operating Temperature Range	-55 – 85 °C[-67 – 185 °F]
-----------------------------	---------------------------

Operation/Application

Circuit Application	Signal
---------------------	--------

Product Compliance

[For compliance documentation, visit the product page on TE.com>](#)

EU RoHS Directive 2011/65/EU	Compliant
------------------------------	-----------

EU ELV Directive 2000/53/EC	Compliant
-----------------------------	-----------

China RoHS 2 Directive MIIT Order No 32, 2016	No Restricted Materials Above Threshold
---	---

EU REACH Regulation (EC) No. 1907/2006	Current ECHA Candidate List: JUNE 2022 (224) Candidate List Declared Against: JAN 2022 (223) SVHC > Threshold: Not Yet Reviewed
--	--

Halogen Content	Low Halogen - Br, Cl, F, I < 900 ppm per homogenous material. Also BFR/CFR/PVC Free
-----------------	---

Solder Process Capability	Reflow solder capable to 260°C
---------------------------	--------------------------------

Product Compliance Disclaimer

This information is provided based on reasonable inquiry of our suppliers and represents our current actual knowledge based on the information they provided. This information is subject to change. The part numbers that TE has identified as EU RoHS compliant have a maximum concentration of 0.1% by weight in homogenous materials for lead, hexavalent chromium, mercury, PBB, PBDE, DBP, BBP, DEHP, DIBP, and 0.01% for cadmium, or qualify for an exemption to these limits as defined in the Annexes of Directive 2011/65/EU (RoHS2). Finished electrical and electronic equipment products will be CE marked as required by Directive 2011/65/EU. Components may not be CE marked. Additionally, the part numbers that TE has identified as EU ELV compliant have a maximum concentration of 0.1% by weight in homogenous materials for lead, hexavalent chromium, and mercury, and 0.01% for cadmium, or qualify for an exemption to these limits

as defined in the Annexes of Directive 2000/53/EC (ELV). Regarding the REACH Regulation, the information TE provides on SVHC in articles for this part number is based on the latest European Chemicals Agency (ECHA) 'Guidance on requirements for substances in articles' posted at this URL: <https://echa.europa.eu/guidance-documents/guidance-on-reach>

Compatible Parts



TE Part # 2821750-1
SLIVER C/A, 50P, STR TO STR 25GHZ, 100OHM



TE Part # 2821750-2
SLIVER C/A, 50P, STR TO STR,25GHZ, 100OHM



TE Part # 2317815-1
CABLE PLUG KIT, SLIVER 50P,



TE Part # 2821747-2
SLIVER C/A, 50P, STR TO STR,10GHZ, 100OHM



TE Part # 2821747-1
SLIVER C/A, 50P, STR TO STR,10GHZ, 100OHM



TE Part # 2820397-1
SLIVER C/A, 50P, STR TO STR, 10GHZ, 85OHM



TE Part # 2820397-2
SLIVER C/A, 50P, STR TO STR, 10GHZ, 85OHM



TE Part # 2820399-1
SLIVER C/A, 50P, R/A TO R/A, 10GHZ, 85OHM



TE Part # 2820399-2
SLIVER C/A, 50P, R/A TO R/A, 10GHZ, 85OHM



TE Part # 2821638-1
SLIVER C/A, 50P, STR TO R/A, 10GHZ, 85OHM



TE Part # 2821638-2
SLIVER C/A, 50P, STR TO R/A, 10GHZ, 85OHM



TE Part # 2821742-1
SLIVER C/A, 50P, STR TO STR, 25G, 85OHM



TE Part # 2821742-2
SLIVER C/A, 50P, STR TO STR, 25G, 85OHM



TE Part # 2821743-1
SLIVER C/A, 50P, R/A TO R/A, 25GHZ, 85OHM



TE Part # 2821743-2
SLIVER C/A, 50P, R/A TO R/A, 25GHZ, 85OHM



TE Part # 2821748-1
SLIVER C/A, 50P, R/A TO R/A,10GHZ, 100OHM



TE Part # 2821748-2
SLIVER C/A, 50P, R/A TO R/A,10GHZ,
100OHM



TE Part # 2821749-1
SLIVER C/A, 50P, STR TO R/A,10GHZ,
100OHM

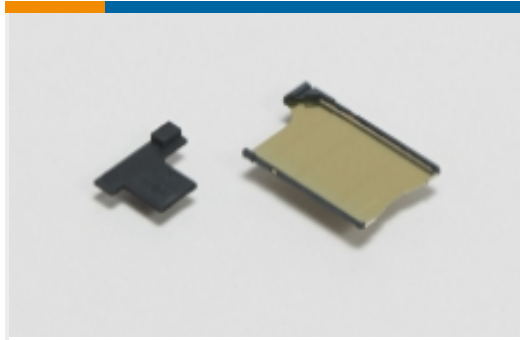


TE Part # 2821749-2
SLIVER C/A, 50P, STR TO R/A,10GHZ,
100OHM

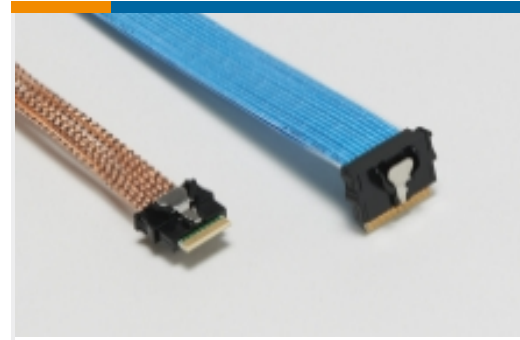


TE Part # 2821751-1
SLIVER C/A, 50P, R/A TO R/A,25GHZ,
100OHM

Also in the Series | Sliver for SFF-TA-1002



Card Guide Hardware(1)

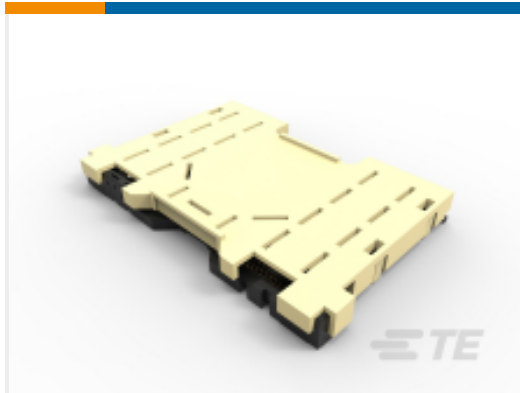


Internal I/O Cable Assemblies(109)



Internal I/O Connectors(135)

Customers Also Bought



TE Part #2-2129710-5
LEFT SIDE LGA3647-0 SOCKET-P0
FOR ODM



TE Part #DT15-6P
HDR, 6P, GRY, ST, NI/CU



TE Part #2204535-1
ELCON MINI 2X3P STACKED RA
HEADER,SOLDER



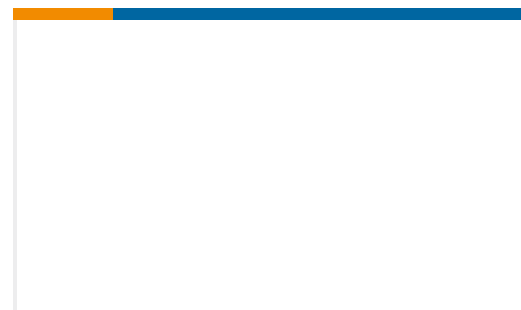
TE Part #2170359-1
INV MJ,1X4,PNL GRD



TE Part #382811-6
SHUNT, ECON, PHBR 15 AU,BLACK



TE Part #1776130-8
8P TERMI-BLOK HDR,HIGH TEMP



TE Part #2204585-7



TE Part #2246020-1



TE Part #2303045-1



Documents

Product Drawings

[RCPT ASSY SMT VERT 50 POSN MBC](#)

English

CAD Files

[3D PDF](#)

3D

Customer View Model

[ENG_CVM_CVM_2292096-1_C.2d_dxf.zip](#)

English

Customer View Model

[ENG_CVM_CVM_2292096-1_C.3d_igs.zip](#)

English

Customer View Model

[ENG_CVM_CVM_2292096-1_C.3d_stp.zip](#)

English

By downloading the CAD file I accept and agree to the [Terms and Conditions](#) of use.

Datasheets & Catalog Pages

[Internal Cabled Interconnects Solutions Guide](#)

English

[Sliver Internal Cabled Interconnect Solutions Brochure \(Chinese\)](#)

Product Specifications

[Application Specification](#)

English

Agency Approvals

[UL Report](#)

English