

2236048-1 ✓ ACTIVE

AMP | MCON 1.2mm, MCON Interconnection System

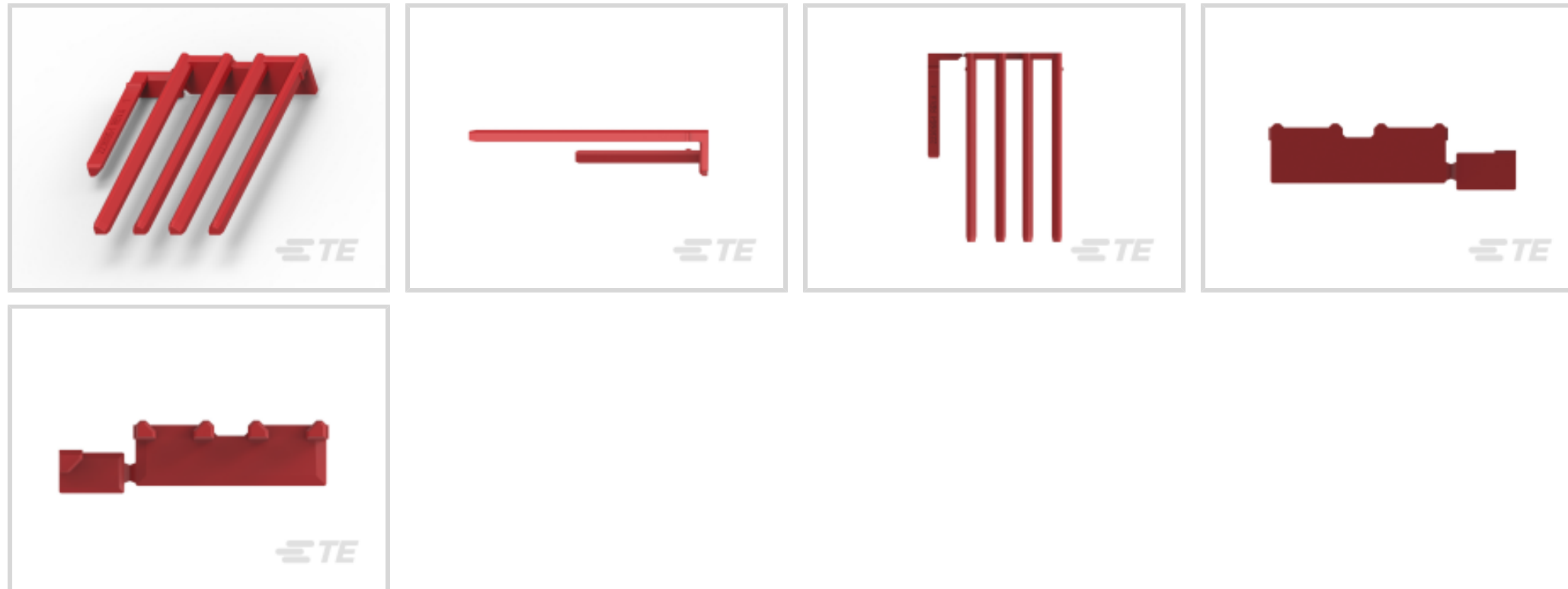
TE Internal #: 2236048-1

Automotive Connector Locks & Position Assurance, TPA (Terminal Position Assurance), Red, Wire-to-Wire, PA GF, MCON Interconnection System

[View on TE.com >](#)



Connectors > Automotive Connectors > Connector Accessories > Locks & Position Assurance



Connector & Contact Retention Accessory Type: **TPA (Terminal Position Assurance)**

Primary Product Color: **Red**

Connector System: **Wire-to-Wire**

Primary Product Material: **PA GF**

Features

Product Type Features

Connector & Contact Retention Accessory Type	TPA (Terminal Position Assurance)
Connector System	Wire-to-Wire

Body Features

Primary Product Color	Red
Primary Product Material	PA GF

Industry Standards

UL Flammability Rating	UL 94HB
------------------------	---------

Other

Serviceable	Yes
-------------	-----

Product Compliance

[For compliance documentation, visit the product page on TE.com>](#)

EU RoHS Directive 2011/65/EU	Compliant
EU ELV Directive 2000/53/EC	Compliant



China RoHS 2 Directive MIIT Order No 32, 2016	No Restricted Materials Above Threshold
EU REACH Regulation (EC) No. 1907/2006	Current ECHA Candidate List: JUNE 2022 (224) Candidate List Declared Against: JUNE 2022 (224) Does not contain REACH SVHC
Halogen Content	Low Halogen - Br, Cl, F, I < 900 ppm per homogenous material. Also BFR/CFR/PVC Free
Solder Process Capability	Not reviewed for solder process capability

Product Compliance Disclaimer

This information is provided based on reasonable inquiry of our suppliers and represents our current actual knowledge based on the information they provided. This information is subject to change. The part numbers that TE has identified as EU RoHS compliant have a maximum concentration of 0.1% by weight in homogenous materials for lead, hexavalent chromium, mercury, PBB, PBDE, DBP, BBP, DEHP, DIBP, and 0.01% for cadmium, or qualify for an exemption to these limits as defined in the Annexes of Directive 2011/65/EU (RoHS2). Finished electrical and electronic equipment products will be CE marked as required by Directive 2011/65/EU. Components may not be CE marked. Additionally, the part numbers that TE has identified as EU ELV compliant have a maximum concentration of 0.1% by weight in homogenous materials for lead, hexavalent chromium, and mercury, and 0.01% for cadmium, or qualify for an exemption to these limits as defined in the Annexes of Directive 2000/53/EC (ELV). Regarding the REACH Regulation, the information TE provides on SVHC in articles for this part number is based on the latest European Chemicals Agency (ECHA) 'Guidance on requirements for substances in articles' posted at this URL: <https://echa.europa.eu/guidance-documents/guidance-on-reach>

Compatible Parts



TE Part # 5-1579007-3
EXTRACTION TOOL

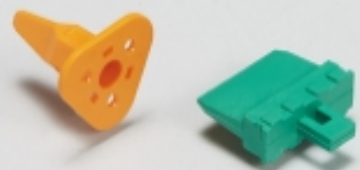


TE Part # CAT-M4595-CH8172
MCON, CONNECTOR HOUSING


Also in the Series | MCON 1.2mm




Automotive Connector Caps & Covers (9)



Automotive Connector Locks & Position Assurance(9)



Automotive Housings(5)



Automotive Seals & Cavity Plugs(1)



Automotive Terminals(11)



Insertion & Extraction Tools(5)

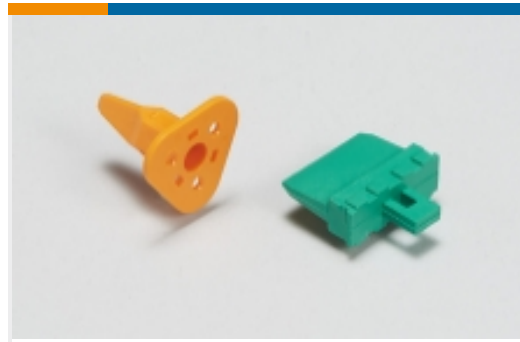


Other Automotive Connector Accessories(4)

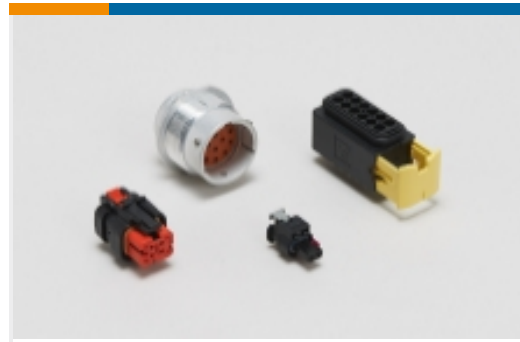
Also in the Series | MCON Interconnection System



Automotive Connector Caps & Covers (24)



Automotive Connector Locks & Position Assurance(11)



Automotive Housings(288)



Automotive Seals & Cavity Plugs(4)



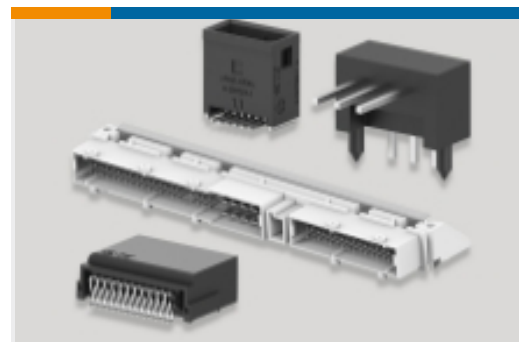
Automotive Terminals(113)



Insertion & Extraction Tools(31)



Other Automotive Connector Accessories(6)



PCB Headers & Receptacles(1)

Customers Also Bought



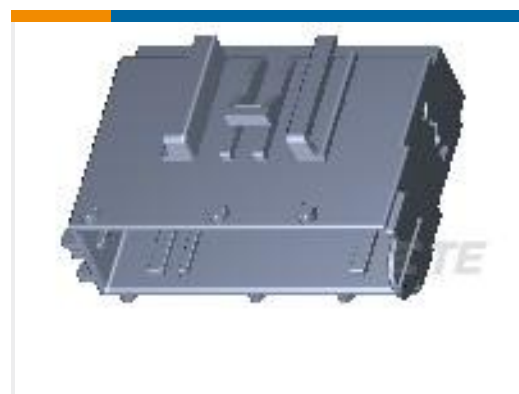
TE Part #1745068-1
AMP MCP, UNSEALED CONNECTOR HOUSING



TE Part #2-2236898-5
5POS, MCON 1.2 LL REC SEALED



TE Part #284716-6
6 POS. MT-II REC. CONNECTOR



TE Part #284879-3
20 POS MALE HOUSING ASSY



TE Part #1473247-2
MQS 81P LEVER(R) ASSY



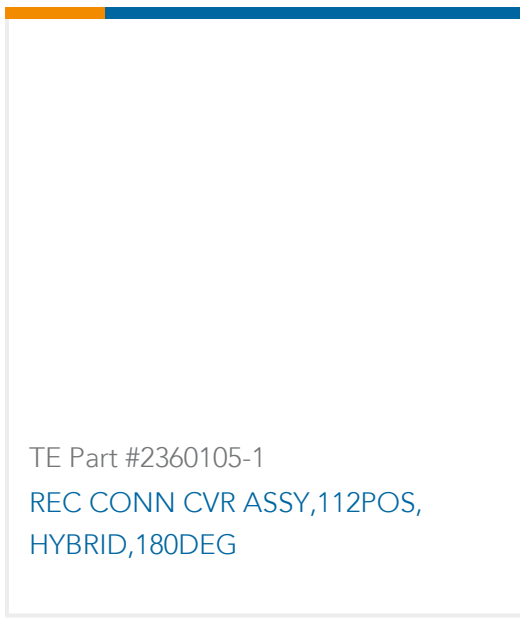
TE Part #2-953698-1
3POS MQS TAB



TE Part #2310399-1
REC CONN CVR,4POS,MCON 9.5



TE Part #1-2344718-2
112POS,HYBRID,REC HSG ASSY,SLD, COD B



Documents

Product Drawings

[KIT SEC.LOCK FOR 32 WAYS CONN.](#)

English

CAD Files

[3D PDF](#)

3D

Customer View Model

[ENG_CVM_CVM_2236048-1_A.2d_dxf.zip](#)

English

Customer View Model

[ENG_CVM_CVM_2236048-1_A.3d_igs.zip](#)

English

Customer View Model

[ENG_CVM_CVM_2236048-1_A.3d_stp.zip](#)

English

By downloading the CAD file I accept and agree to the [Terms and Conditions](#) of use.