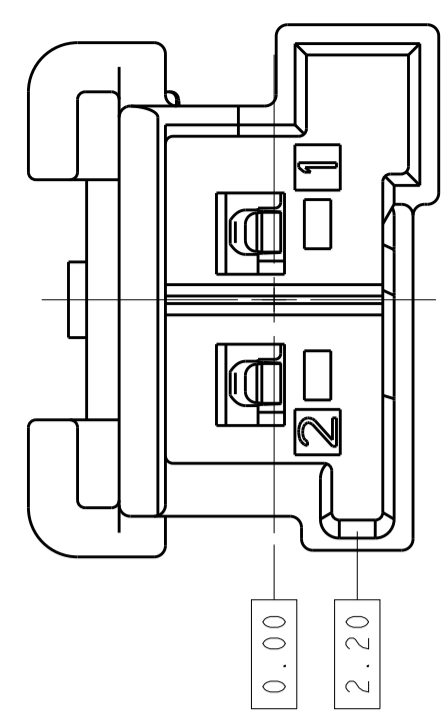
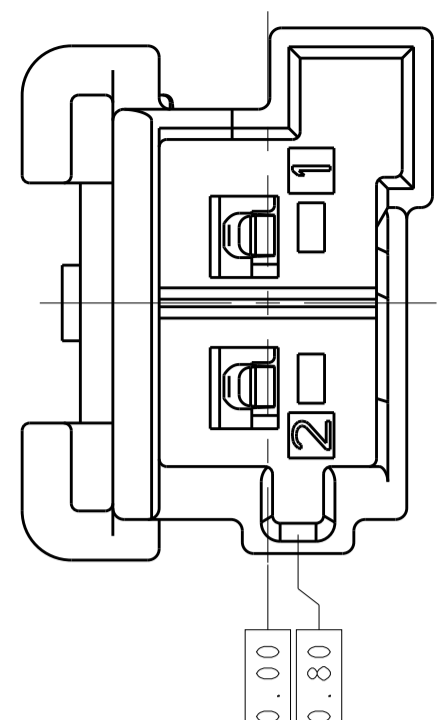


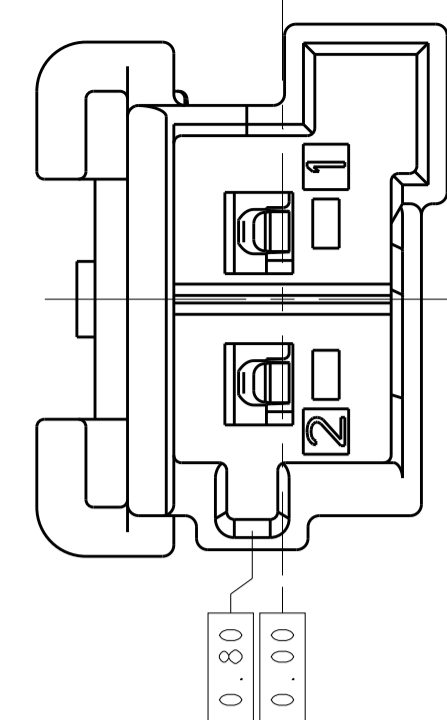
REVISIONS				
P.	LTM	DESCRIPTION	DATE	APVD
1		INITIAL DRAFT	03DEC2013	CK PR
2		PRODUCT DESIGN IMPROVEMENTS	11APR2014	PR PR
3		UPDATED VIEWS	07JAN2015	PR PR
A		DRAWING RELEASE	13NOV2015	PR PR



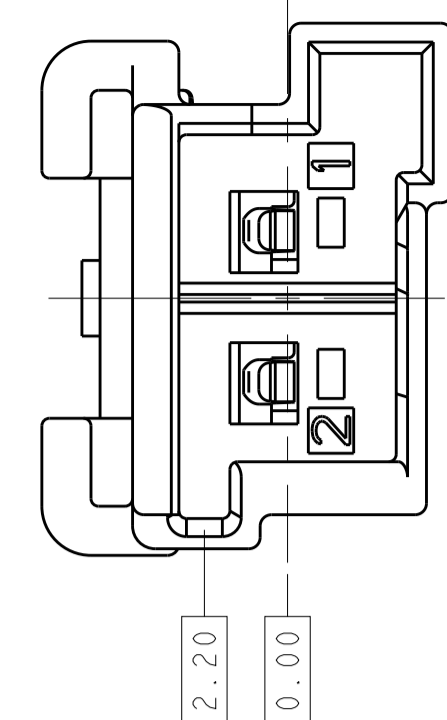
KEYING OPTION "A"



KEYING OPTION "B"

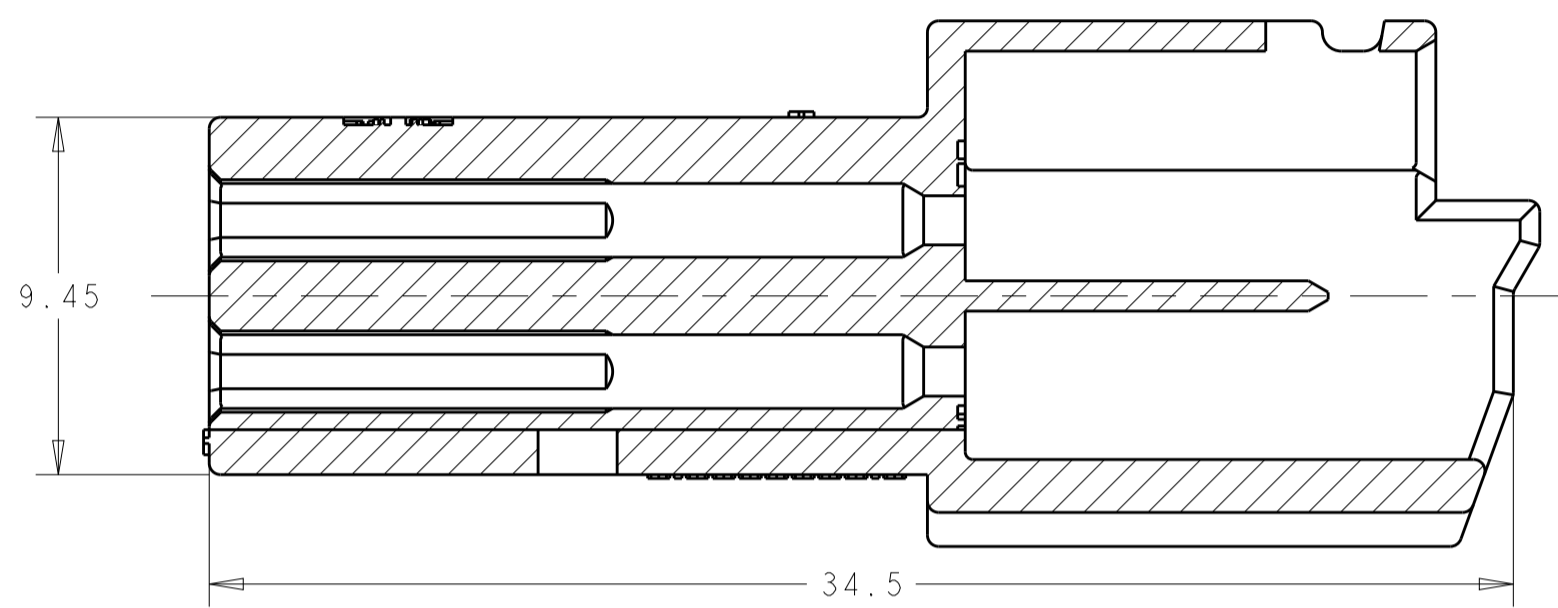


KEYING OPTION "C"

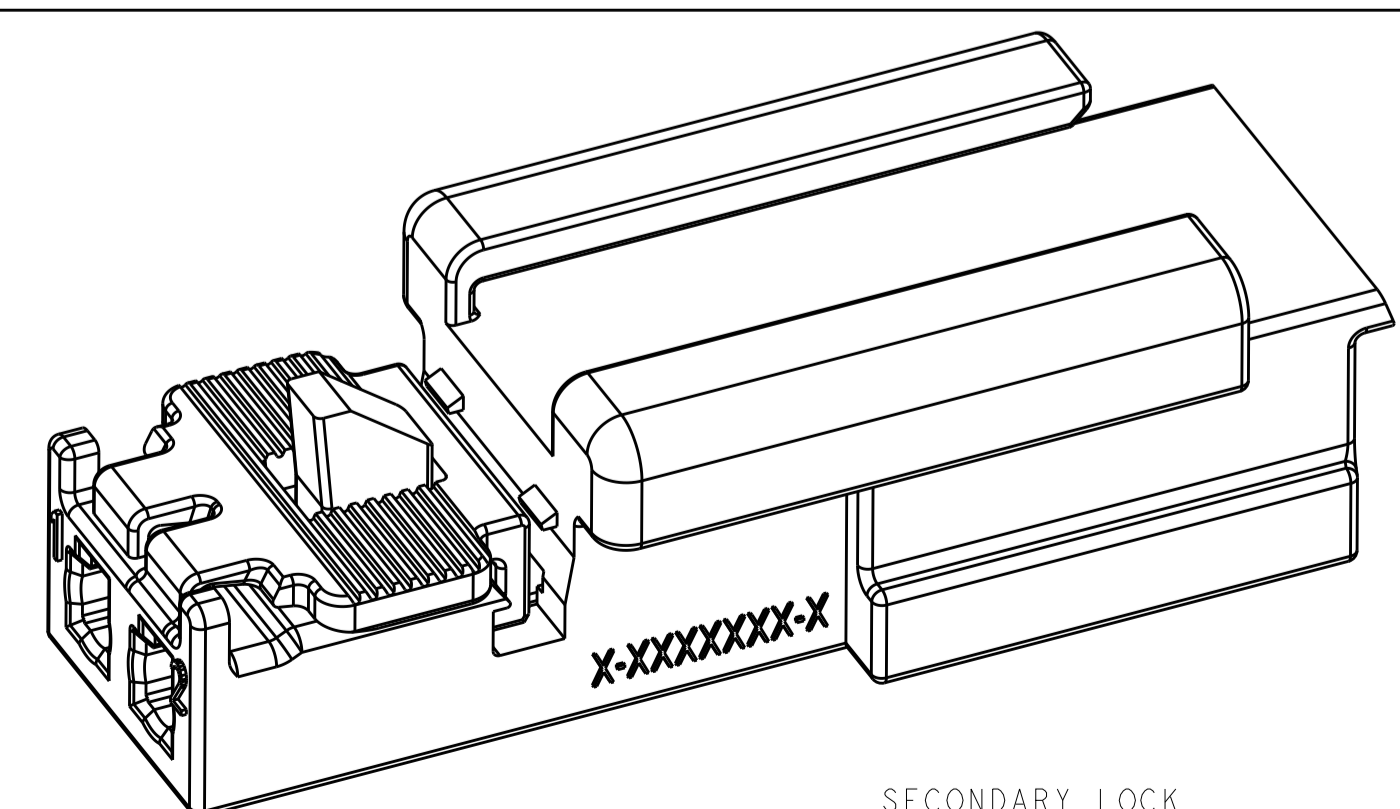
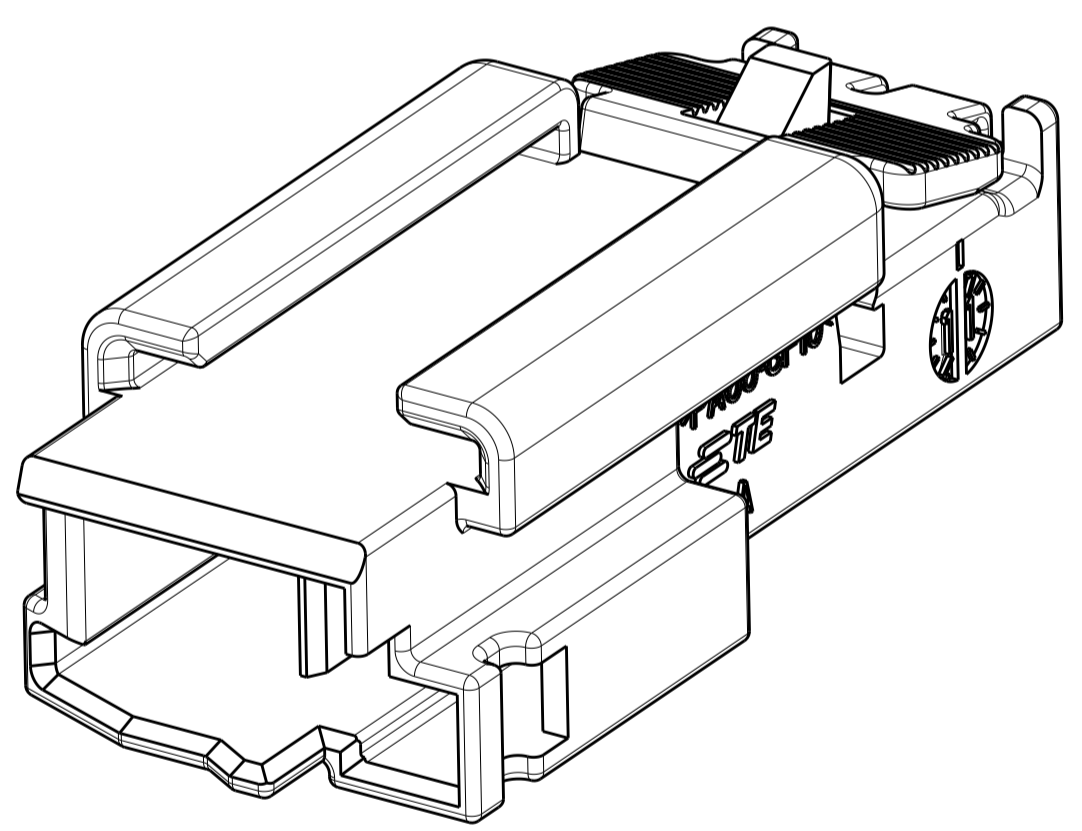
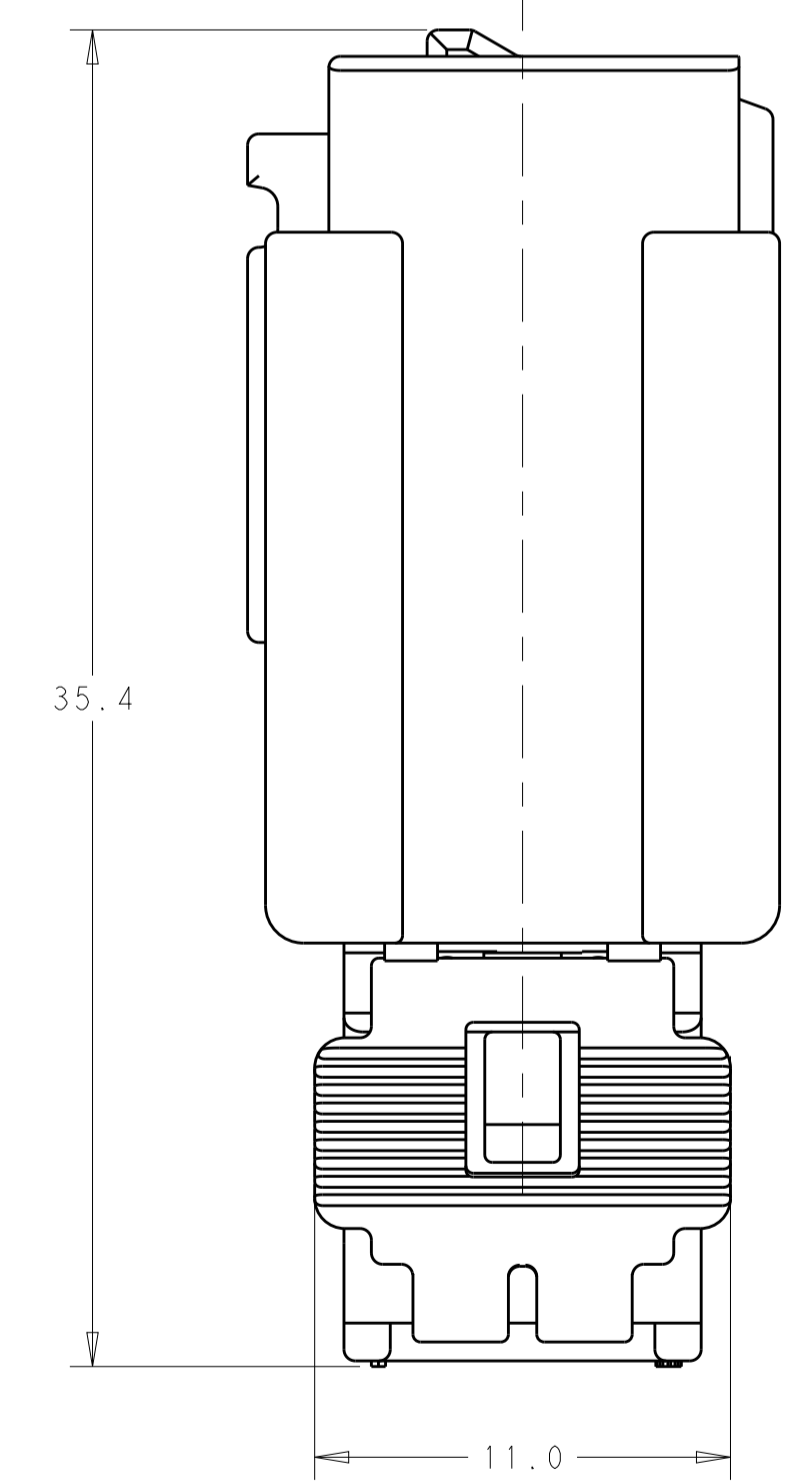
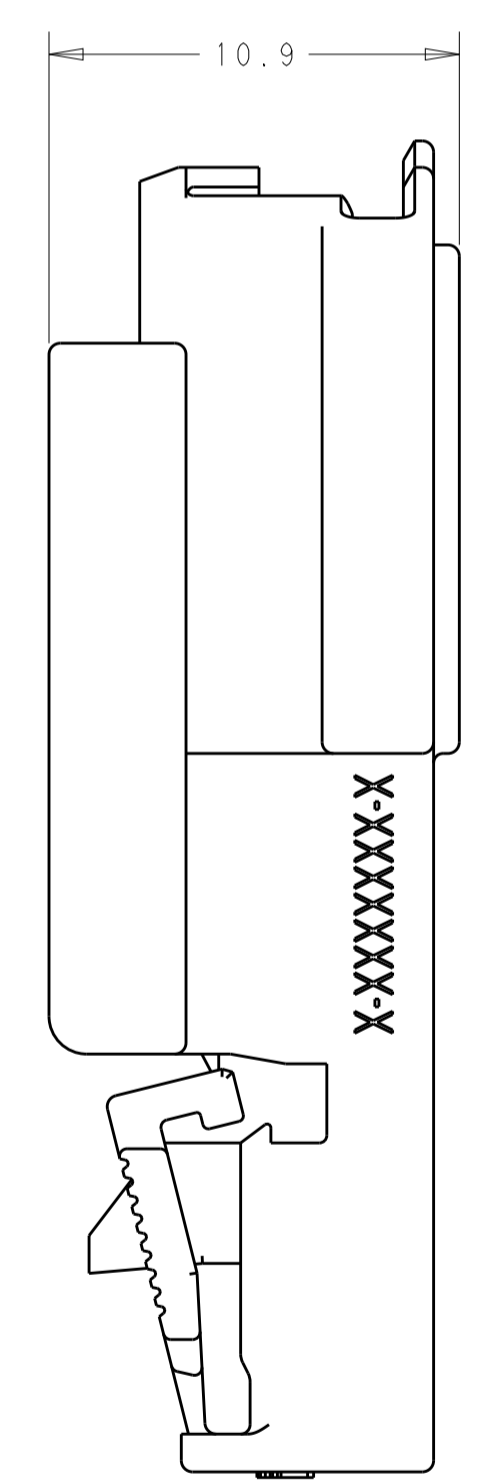
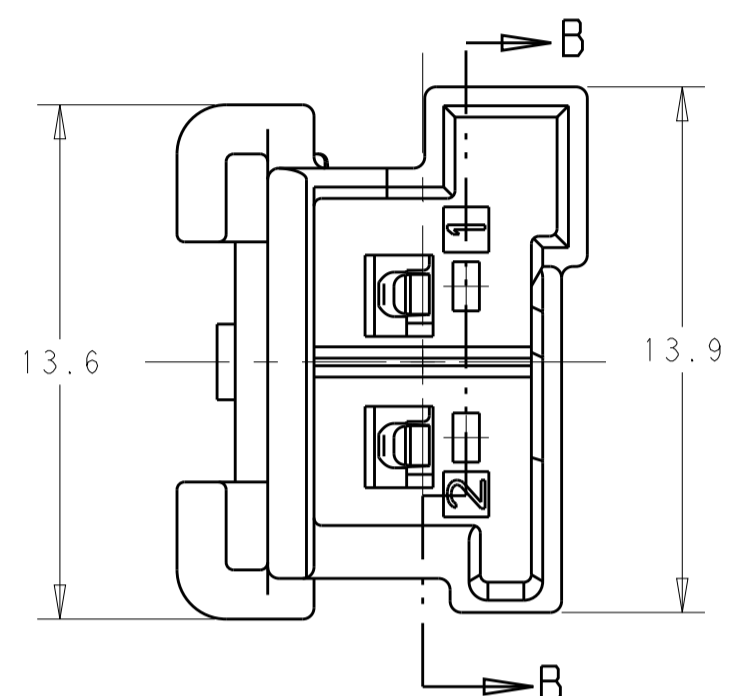


KEYING OPTION "D"

- ⚠ MATERIAL: PA66-GF10  
COLOR: SEE TABLE
- 2272160-1 KEYING OPTION "A" SHOWN IN GENERAL VIEWS.
  - CAP ASSEMBLY WILL ACCEPT THE FOLLOWING TERMINAL PART NUMBERS: 1718350-1 (TIN PLATED) 0.50-0.75mm<sup>2</sup>
  - ASSEMBLY IS SHIPPED WITH SECONDARY LOCK IN THE PRE-LOCK POSITION AS SHOWN. SECONDARY LOCK MAY CLOSE INADVERTENTLY DURING SHIPPING. IF THIS OCCURS, RELOCATE SECONDARY LOCK TO THE OPEN POSITION PRIOR TO INSERTION OF TERMINALS.



SECTION B-B



SCALE 5:1 SECONDARY LOCK CLOSED POSITION

CAP HOUSING COLOR	KEYING OPTION	PART NUMBER
GRAY	D	2272160-4
GREEN	C	2272160-3
BLUE	B	2272160-2
NATURAL	A	2272160-1

THIS DRAWING IS A CONTROLLED DOCUMENT.

OWN: CHETHAN K. 29OCT2013  
CHK: P. ROMAN 31OCT2013  
APVD: P. ROMAN 31OCT2013

DIMENSIONS: mm  
TOLERANCES UNLESS OTHERWISE SPECIFIED:  
0 PLC ±  
1 PLC ±0.5  
2 PLC ±0.10  
3 PLC ±  
4 PLC ±  
ANGLES ±°

MATERIAL: FINISH: -

WEIGHT: -

Customer Drawing

NAME: 2P UNSEALED (MCON CB TAB) CAP HOUSING

SIZE: A1 CAGE CODE: - DRAWING NO: C=2272160 RESTRICTED TO: -

SCALE: 3:1 SHEET 1 OF 1 REV A

TE Connectivity