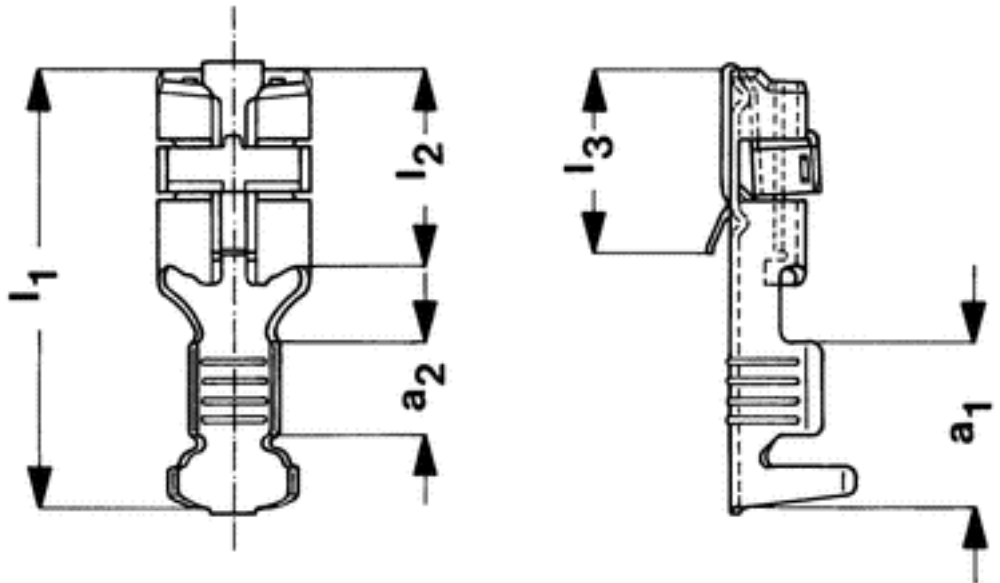




Characteristics and dimensions of terminals

| | |
|---------------------------------|-----------------------------|
| Part number | 26818.123.178 |
| Specification | SIKO 1 |
| Material | CuZn |
| Surface / Colour | frSn 2 |
| Form | Chain form |
| Transport | Normal transverse transport |
| Single part | X |
| Packing unit / piece | 2000 |
| Section area (mm ²) | 1.50-2.50 |
| Tab thickness (mm) | 0.80 |
| Tab width (mm) | 6.30 |
| Material thickness (mm) | 0.40 |
| Notch | x |
| a ₁ | 7.20 |
| a ₂ | 4.00 |
| l ₁ | 19.00 |
| l ₂ | 8.50 |
| l ₃ | 7.80 |



Note: The drawing only gives an overview of the geometry of the part. The crimp area is shown as supplied in strip form. A technical drawing is available on request.

[Contents of your inquiry](#)