

2219501-2 ✓ ACTIVE

Multilock Connector System

TE Internal #: 2219501-2

Housing for Female Terminals, Wire-to-Board, 4 Position, .125 in [3.2 mm] Centerline, Black, Signal, Multilock Connector System

[View on TE.com >](#)



Connectors > Automotive Connectors > Connector Housings > MULTILOCK, CONNECTOR HOUSING



Connector & Housing Type: **Housing for Female Terminals**

Mating Tab Width: **1.5 mm [.06 in]**

Connector System: **Wire-to-Board**

Number of Positions: **4**

Centerline (Pitch): **3.2 mm [.125 in]**

[All MULTILOCK, CONNECTOR HOUSING \(576\)](#)

Features

Product Type Features

Connector & Housing Shape	Rectangular
Connector & Housing Type	Housing for Female Terminals
Connector System	Wire-to-Board
Sealable	No
Hybrid Connector	No
Primary Locking Feature	Integrated in Housing

Configuration Features

Number of Positions	4
Number of Rows	2

Body Features

Cable Exit Angle	180°
Body Material	PBT GF
Primary Product Color	Black



Contact Features

Contact Size	1.5mm
Contact Type	Receptacle
Mating Tab Width	1.5 mm[.06 in]

Mechanical Attachment

Mounting Feature	Without
Terminal Position Assurance	No
Strain Relief	Without
Mating Alignment Type	Polarized
Mating Alignment	With
Connector Mounting Type	Cable Mount (Free-Hanging)

Housing Features

Centerline (Pitch)	3.2 mm[.125 in]
--------------------	-----------------

Dimensions

Product Width	20 mm[.787 in]
Product Length	8.95 mm[.352 in]
Product Height	7.9 mm[.311 in]
Row-to-Row Spacing	3.45 mm[.135 in]

Operation/Application

Circuit Application	Signal
---------------------	--------

Packaging Features

Packaging Quantity	600
Packaging Method	Tray

Other

Serviceable	No
Connector Position Assurance Capable	No

Product Compliance

[For compliance documentation, visit the product page on TE.com>](#)

EU RoHS Directive 2011/65/EU	Compliant
EU ELV Directive 2000/53/EC	Compliant
China RoHS 2 Directive MIIT Order No 32, 2016	No Restricted Materials Above Threshold



EU REACH Regulation (EC) No. 1907/2006

Current ECHA Candidate List: JUNE 2022 (224)

Candidate List Declared Against: JAN 2022 (223)

SVHC > Threshold:
Not Yet Reviewed

Halogen Content

Low Halogen - Br, Cl, F, I < 900 ppm per homogenous material. Also BFR/CFR/PVC Free

Solder Process Capability

Not reviewed for solder process capability

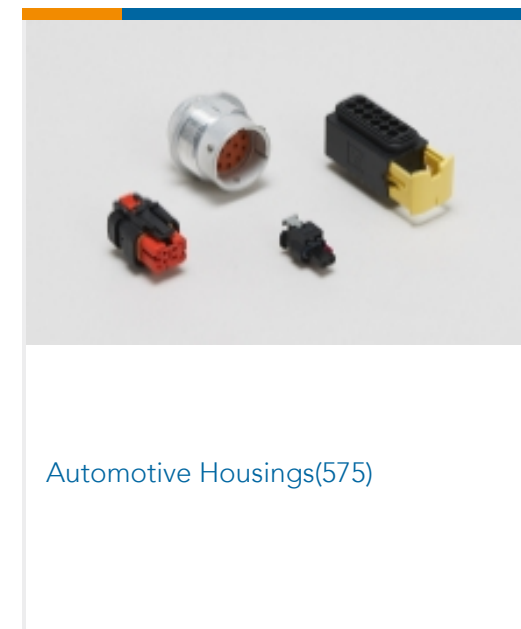
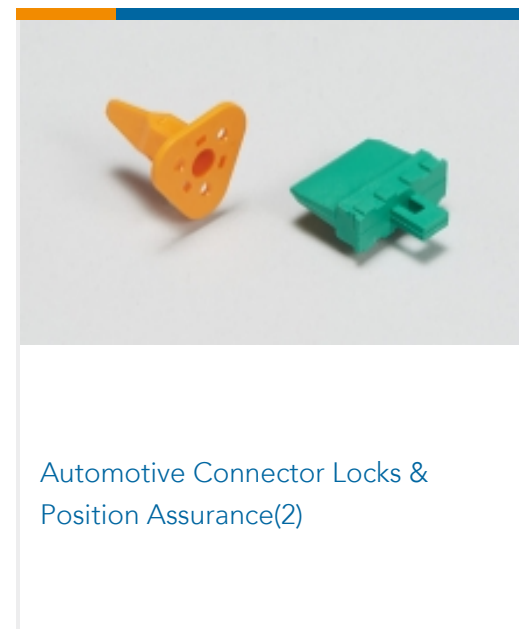
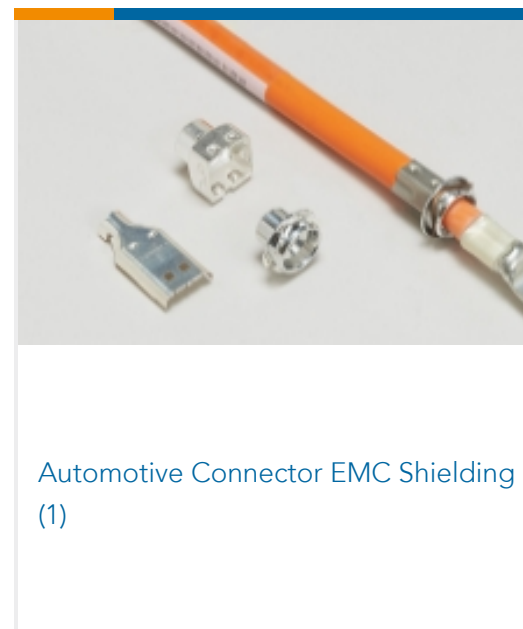
Product Compliance Disclaimer

This information is provided based on reasonable inquiry of our suppliers and represents our current actual knowledge based on the information they provided. This information is subject to change. The part numbers that TE has identified as EU RoHS compliant have a maximum concentration of 0.1% by weight in homogenous materials for lead, hexavalent chromium, mercury, PBB, PBDE, DBP, BBP, DEHP, DIBP, and 0.01% for cadmium, or qualify for an exemption to these limits as defined in the Annexes of Directive 2011/65/EU (RoHS2). Finished electrical and electronic equipment products will be CE marked as required by Directive 2011/65/EU. Components may not be CE marked. Additionally, the part numbers that TE has identified as EU ELV compliant have a maximum concentration of 0.1% by weight in homogenous materials for lead, hexavalent chromium, and mercury, and 0.01% for cadmium, or qualify for an exemption to these limits as defined in the Annexes of Directive 2000/53/EC (ELV). Regarding the REACH Regulation, the information TE provides on SVHC in articles for this part number is based on the latest European Chemicals Agency (ECHA) 'Guidance on requirements for substances in articles' posted at this URL: <https://echa.europa.eu/guidance-documents/guidance-on-reach>

Compatible Parts



Also in the Series | Multilock Connector System





Automotive Seals & Cavity Plugs(2)



Automotive Terminals(140)



Insertion & Extraction Tools(6)



Other Automotive Connector Accessories(9)



PCB Headers & Receptacles(129)

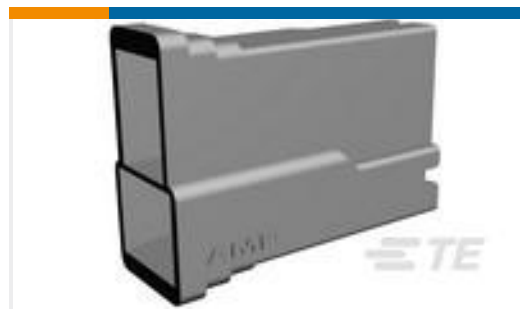
Customers Also Bought



TE Part #1-1419158-8
GET .64 CONNECTOR SYSTEM,
CONNECTOR HSG



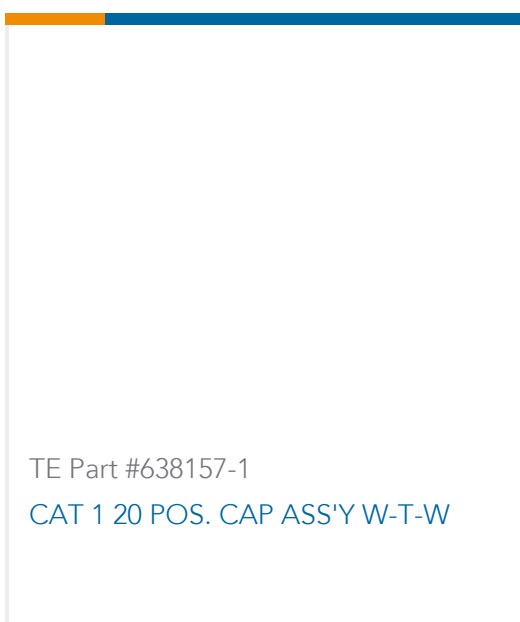
TE Part #CH03426001
OSZH-125-NR1-27MM



TE Part #1-926522-3
2P POS LOCK BU GEH



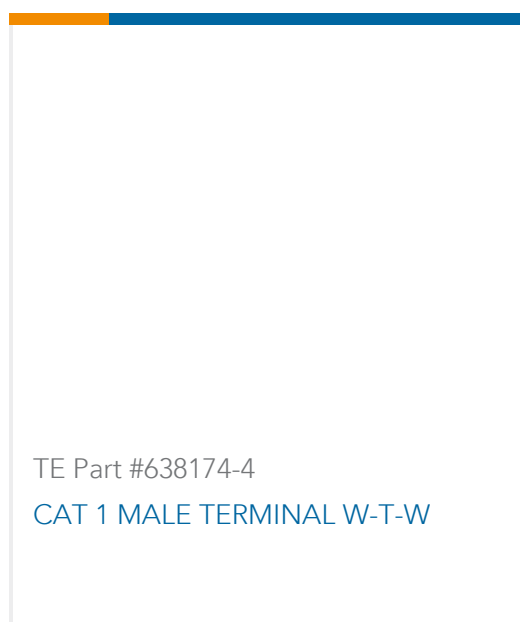
TE Part #1326029-7
2.8MM BLD,UNSEAL,14-16AWG,REVR



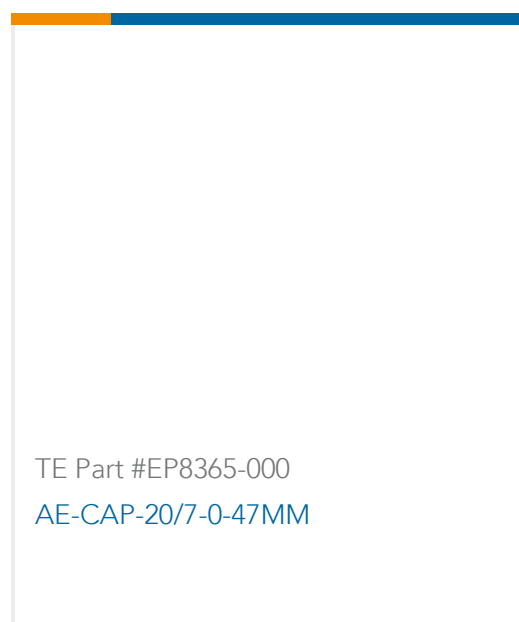
TE Part #638157-1
CAT 1 20 POS. CAP ASS'Y W-T-W



TE Part #638174-1
CAT 1 MALE TERMINAL W-T-W



TE Part #638174-4
CAT 1 MALE TERMINAL W-T-W



TE Part #EP8365-000
AE-CAP-20/7-0-47MM

Documents

Product Drawings

060 4P PLUG ASSY

English

CAD Files

3D PDF

3D

Customer View Model

ENG_CVM_CVM_2219501-2_A.2d_dxf.zip



English

Customer View Model

[ENG_CVM_CVM_2219501-2_A.3d_igs.zip](#)

English

Customer View Model

[ENG_CVM_CVM_2219501-2_A.3d_stp.zip](#)

English

By downloading the CAD file I accept and agree to the [Terms and Conditions](#) of use.

Product Specifications

[HYB 36P HEADER, 4P PLUG](#)

English