

4

3

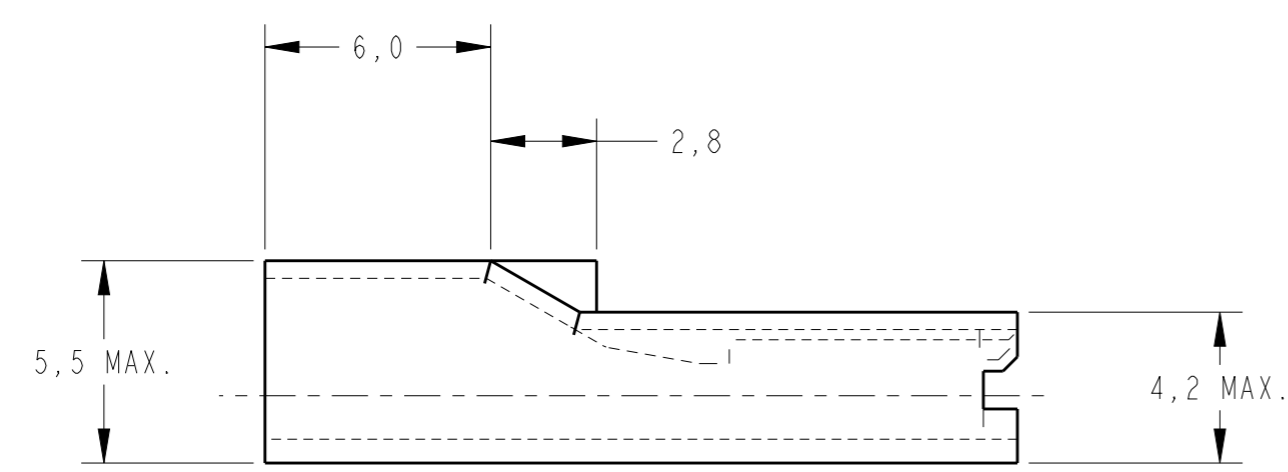
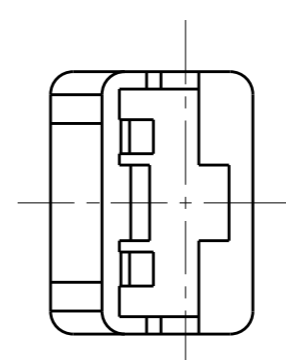
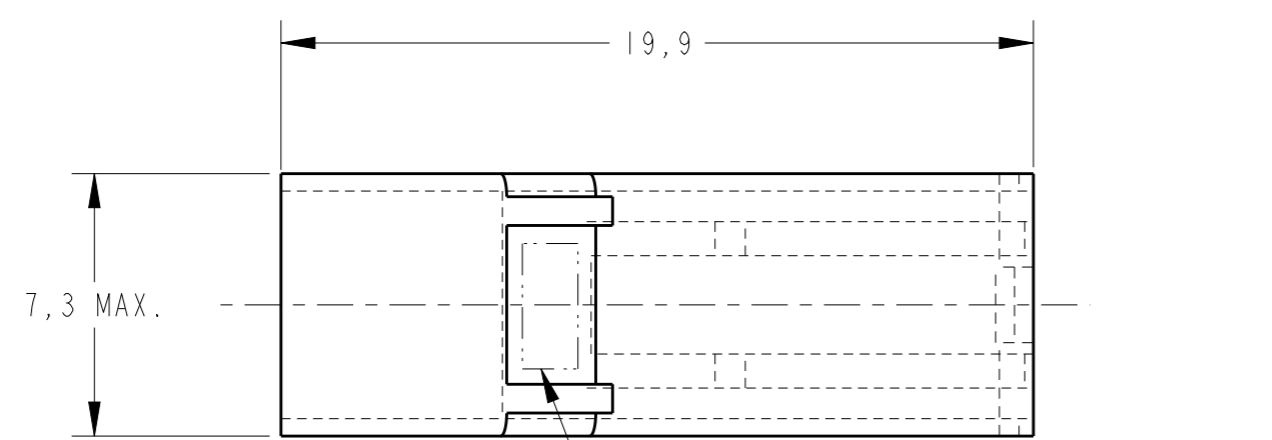
2

1

THIS DRAWING IS UNPUBLISHED. RELEASED FOR PUBLICATION 20  
 © COPYRIGHT 20 BY - ALL RIGHTS RESERVED.

LOC	DIST	REVISIONS				
P	LTR	DESCRIPTION	DATE	DWN	APVD	
AP	-	A	RELEASED	07SEP2011	HC	WLS
		A1	REV. BY ECO-13-011932	31JUL2013	HC	WLS
		A2	REV. BY ECO 16-010419	14JULY2016	HC	WLS
		-	-	-	-	-

**CAD**  
 Pro  
 DO NOT REVISE  
 EXCEPT BY CAD.



△ - MATÉRIA-PRIMA CONFORME ESPECIFICAÇÃO IEC 60335-1, GWT 750°C, SEM CHAMA.  
 RAW MATERIAL ACC. TO SPEC. IEC 60335-1, GWT 750°C, WITHOUT FLAME.

	NATURAL	△	2-2133394-2
	NATURAL	PA6.6V0 OR PA6.6V0+PA6V0	2-2133394-1
OBSOLETE	AMARELO/YELLOW	PA 6.6	1-2133394-4
	VERMELHO/RED	PA 6.6	1-2133394-3
	PRETO/BLACK	PA 6.6	1-2133394-2
	NATURAL/NATURAL	PA 6.6	1-2133394-1
	NATURAL/NATURAL	POLIPROPILENO/POLYPROPYLENE	2133394-2
	PRETO/BLACK	POLIPROPILENO/POLYPROPYLENE	2133394-1
	FINISH	MATERIAL	PART NUMBER

THIS DRAWING IS A CONTROLLED DOCUMENT.		DWN H.C. CANTER   17AUG2011	TE Connectivity	
		CHK W.L. STEFANI   17AUG2011		
DIMENSIONS: mm	TOLERANCES UNLESS OTHERWISE SPECIFIED:	APVD -	NAME HOUSING .187 SERIES FASTON REC.	
	0 PLC ±-	PRODUCT SPEC -	RESTRICTED TO -	
	1 PLC ±0,5	APPLICATION SPEC -	SIZE A3	CAGE CODE 00779
MATERIAL -	FINISH -	WEIGHT -	DRAWING NO C-2133394	
		Customer Drawing	SCALE 5:1	SHEET 1 OF 1
			REV A2	