



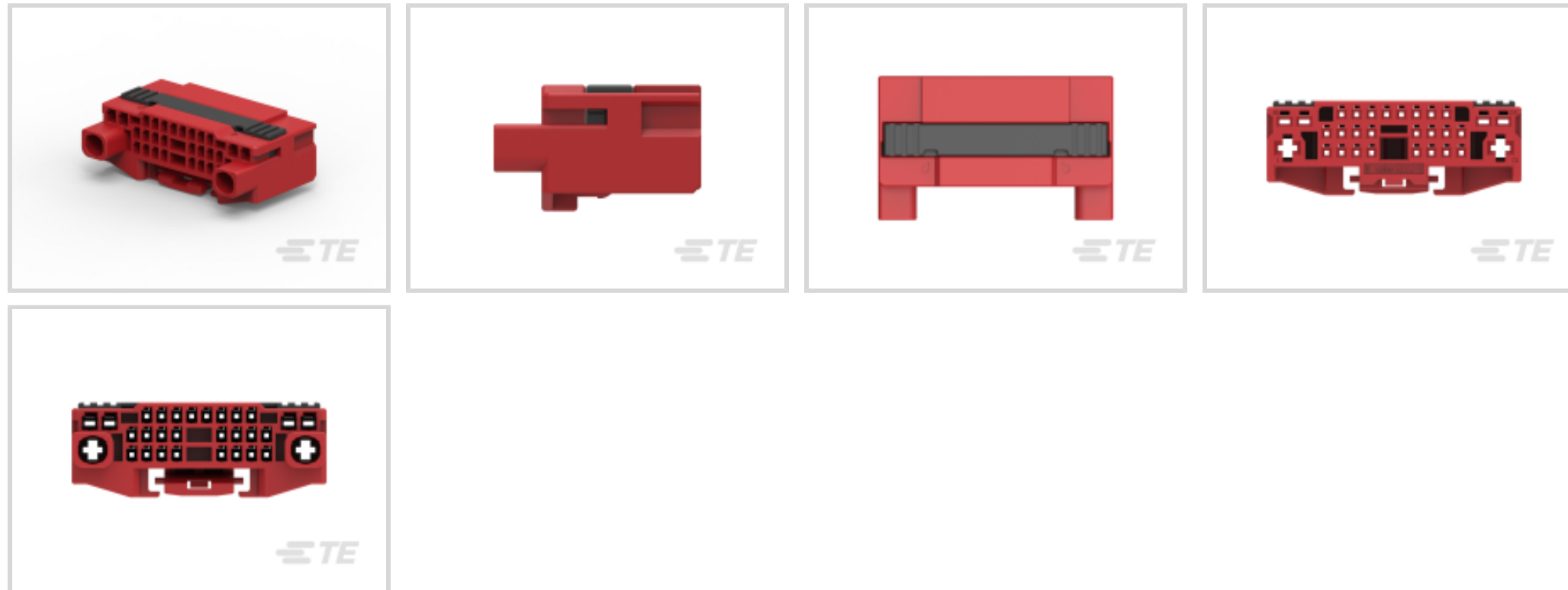
TH/.025 Connector System

TE Internal #: 2188391-6

Housing for Female Terminals, Wire-to-Wire, 30 Position, .129 in / .098 in [2.5 mm / 3.29 mm] Centerline, Red, TH/.025 Connector System

[View on TE.com >](#)

Connectors > Automotive Connectors > Connector Housings > TH/.025 CONNECTOR SYSTEM, HOUSING



Connector & Housing Type: **Housing for Female Terminals**

Connector System: **Wire-to-Wire**

Number of Positions: **30**

Centerline (Pitch): **2.5 mm, 3.29 mm [.098 in, .129 in]**

Sealable: **No**

[All TH/.025 CONNECTOR SYSTEM, HOUSING \(202\)](#)

Features

Product Type Features

Connector & Housing Shape	Rectangular
Connector & Housing Type	Housing for Female Terminals
Connector System	Wire-to-Wire
Sealable	No
Hybrid Connector	Yes
Primary Locking Feature	On the Terminal

Configuration Features

Number of Positions	30
Number of Rows	1, 3

Body Features

Cable Exit Angle	180°
Body Material	PBT



Primary Product Color	Red
-----------------------	-----

Contact Features

Contact Size	.63mm, 1.5mm, 2.8mm
--------------	---------------------

Mechanical Attachment

Mounting Feature	Without
------------------	---------

Terminal Position Assurance	Yes
-----------------------------	-----

Strain Relief	Without
---------------	---------

Mating Alignment Type	Polarized
-----------------------	-----------

Mating Alignment	With
------------------	------

Connector Mounting Type	Cable Mount (Free-Hanging)
-------------------------	----------------------------

Housing Features

Centerline (Pitch)	2.5 mm, 3.29 mm [.098 in] [.129 in]
--------------------	-------------------------------------

Dimensions

Product Width	26 mm [1.02 in]
---------------	-----------------

Product Length	42.56 mm [1.67 in]
----------------	--------------------

Product Height	15.8 mm [.622 in]
----------------	-------------------

Row-to-Row Spacing	3.2 mm [.125 in]
--------------------	------------------

Usage Conditions

Operating Temperature (Max)	70 °C, 75 °C, 80 °C, 85 °C, 90 °C, 100 °C, 105 °C [158 °F] [167 °F] [176 °F] [185 °F] [194 °F] [212 °F] [221 °F]
-----------------------------	--

Operating Temperature Range	-40 – 105 °C [-40 – 221 °F]
-----------------------------	-----------------------------

Industry Standards

UL Flammability Rating	UL 94HB
------------------------	---------

Other

Serviceable	Yes
-------------	-----

Connector Position Assurance Capable	No
--------------------------------------	----

Product Compliance

[For compliance documentation, visit the product page on TE.com>](#)

EU RoHS Directive 2011/65/EU	Compliant
------------------------------	-----------

EU ELV Directive 2000/53/EC	Compliant
-----------------------------	-----------

China RoHS 2 Directive MIIT Order No 32, 2016	No Restricted Materials Above Threshold
---	---



EU REACH Regulation (EC) No. 1907/2006

Current ECHA Candidate List: JUNE 2022 (224)

Candidate List Declared Against: JUNE 2022 (224)

Does not contain REACH SVHC

Halogen Content

Low Halogen - Br, Cl, F, I < 900 ppm per homogenous material. Also BFR/CFR/PVC Free

Solder Process Capability

Not applicable for solder process capability

Product Compliance Disclaimer

This information is provided based on reasonable inquiry of our suppliers and represents our current actual knowledge based on the information they provided. This information is subject to change. The part numbers that TE has identified as EU RoHS compliant have a maximum concentration of 0.1% by weight in homogenous materials for lead, hexavalent chromium, mercury, PBB, PBDE, DBP, BBP, DEHP, DIBP, and 0.01% for cadmium, or qualify for an exemption to these limits as defined in the Annexes of Directive 2011/65/EU (RoHS2). Finished electrical and electronic equipment products will be CE marked as required by Directive 2011/65/EU. Components may not be CE marked. Additionally, the part numbers that TE has identified as EU ELV compliant have a maximum concentration of 0.1% by weight in homogenous materials for lead, hexavalent chromium, and mercury, and 0.01% for cadmium, or qualify for an exemption to these limits as defined in the Annexes of Directive 2000/53/EC (ELV). Regarding the REACH Regulation, the information TE provides on SVHC in articles for this part number is based on the latest European Chemicals Agency (ECHA) 'Guidance on requirements for substances in articles' posted at this URL: <https://echa.europa.eu/guidance-documents/guidance-on-reach>

Compatible Parts



TE Part # CAT-AM705-T273
AMP MCP, RECEPTACLE AND TAB




TE Part # CAT-M9194-T273
MULTILOCK, RECEPTACLE AND TAB




TE Part # 2188394-6
025/060/110 HYB 30P CAP ASSY RED


Also in the Series | TH/.025 Connector System




Automotive Connector Caps & Covers (6)



Automotive Housings(203)



Automotive Seals & Cavity Plugs(2)



Automotive Terminals(25)



Insertion & Extraction Tools(4)



Other Automotive Connector Accessories(5)



PCB Headers & Receptacles(144)

Customers Also Bought



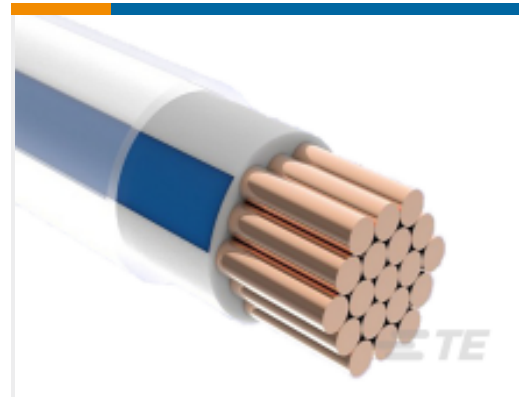
TE Part #5-2208775-9
53POS MIXED MQS REC SEALED
COD 1



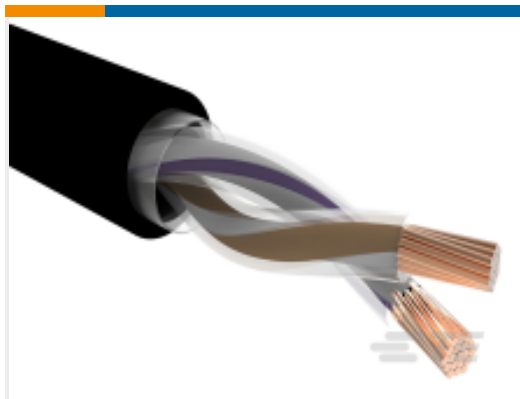
TE Part #1544980-4
TAB HOUSING, 8MM NG1 PLUS, 2
WAY



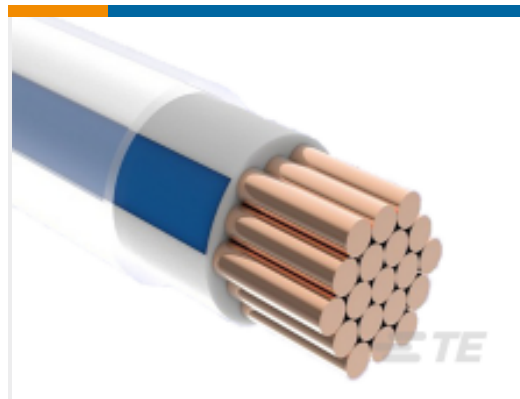
TE Part #7480883001
ACW0219-1.50-50(NS)



TE Part #3551473001
ACW0219-6.00-54(BP)



TE Part #2460793001
ACW5229-0.75-12/92-0



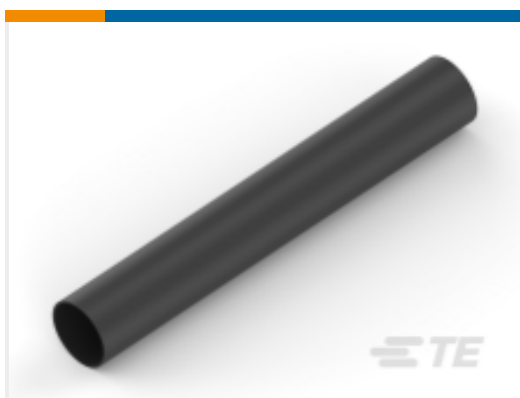
TE Part #CQ04253001
ACW0219-6.00-69(BP)



TE Part #5428156073
LSTT-19-0-25MM



TE Part #2859676008
LSTT-9.5-2-50MM



TE Part #NB10716001
ATUM-32/8-0-55MM

Documents

Product Drawings

025/060/110 HYB 30P PLUG ASSY RED

English

CAD Files

3D PDF

3D

Customer View Model

ENG_CVM_CVM_2188391-6_A.2d_dxf.zip

2188391-6

Housing for Female Terminals, Wire-to-Wire, 30 Position, .129 in / .098 in [2.5 mm / 3.29 mm] Centerline, Red, TH/.025 Connector System



English

Customer View Model

[ENG_CVM_CVM_2188391-6_A.3d_igs.zip](#)

English

Customer View Model

[ENG_CVM_CVM_2188391-6_A.3d_stp.zip](#)

English

By downloading the CAD file I accept and agree to the [Terms and Conditions](#) of use.

Datasheets & Catalog Pages

[TH/.025 Connector Series](#)

English

Product Specifications

[025/060/110 HYB 30P CONNECTOR](#)